

## Quick guide to hearing support at the University of Münster – Sennheiser Mobile Connect

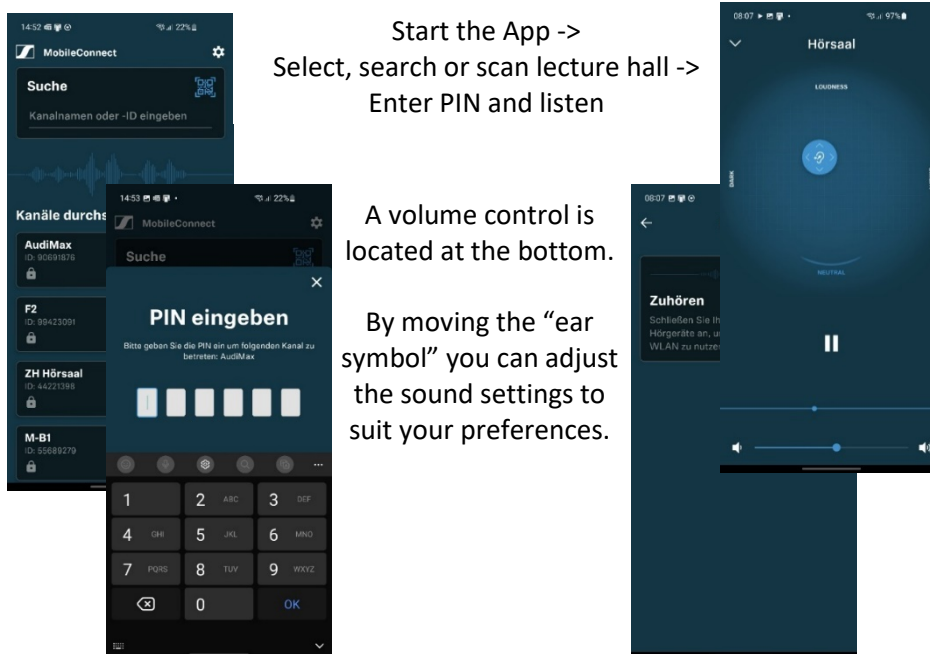
Stand: 07.2024

### Installing the Sennheiser Mobile Connect app

The Sennheiser Mobile Connect app is available for iOS and Android operating systems in the respective stores and can be installed from there.



### How do I connect to the lecture hall audio stream?



### Info:

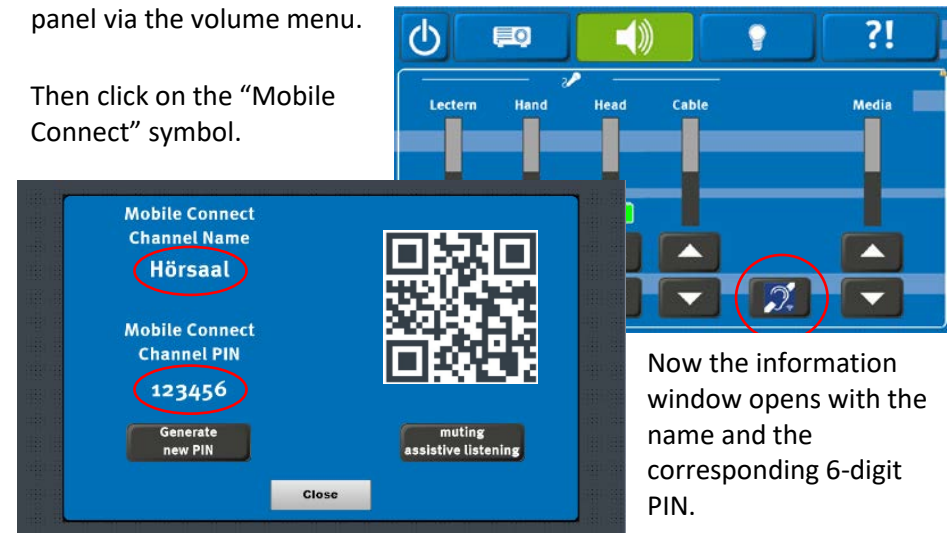
To use this service, you must be logged into the “uni-ms” WLAN with your user ID. Guests require a guest ID which can be requested using the following link:

<https://www.uni-muenster.de/IT/services/nutzerverwaltung/kennung.html>

### Where can I find the PIN for the audio stream?

The PIN can be called up after starting the media system on the touch panel via the volume menu.

Then click on the “Mobile Connect” symbol.



From 2025, a QR code will also be available for the Sennheiser Mobile Connect app.

### Info:

After switching off or restarting the media system, the PIN for the audio stream is automatically regenerated.

All participants in the audio stream are then automatically disconnected.

Detailed instructions and a list of rooms equipped with this technology can be found at:

<https://www.uni-muenster.de/studium/hilfeundberatung/studiummitbeeintraechtigung/barrierefreiheit.html>

**If you have any questions or problems, please feel free to contact us**



Use the QR code or the following link  
[uni.ms/medientechnik](https://uni.ms/medientechnik)

Or send an email to  
[avm@uni-muenster.de](mailto:avm@uni-muenster.de)

In urgent cases, our hotline colleagues are  
also available for you, reachable at the  
following number

[\(0251\) 83 - 3 11 11](tel:(0251)83-31111)