

Supplementary material

CURRICULUM VITAE

Dr. Hitoshi Takahashi

Professor Emeritus (Neuropathology)

Niigata University, Niigata, Japan

Hitoshi Takahashi was born in Sendai, Miyagi Prefecture, Japan, on June 26, 1952. He graduated from Niigata University School of Medicine on March 20, 1979 (Medical License, May 29, 1979).



- 1979 Pathology (Neuropathology) Training, Department of Pathology, Brain Research Institute, Niigata University (under Prof. Fusahiro Ikuta)
- 1981 Research Fellow, Department of Pathology (Neuropathology), Albert Einstein College of Medicine, USA (under Prof. Kinuko Suzuki)
- 1983 Pathology (Neuropathology) Training, Department of Pathology, Brain Research Institute, Niigata University (under Prof. Fusahiro Ikuta)
- 1985 Ph.D. (April 8, 1985), Niigata University
- 1988 Assistant Professor
Department of Pathology, Brain Research Institute, Niigata University
- 1991 Associate Professor
Department of Pathology, Brain Research Institute, Niigata University
- 1995 Professor and Chair
Department of Pathology, Brain Research Institute Niigata University
(2002-2014: Director of the Institute)
- 2014 Executive Vice-President for Research, Niigata University
(2014-2018, the concurrent appointment as a professor)
- 2018 Retired from the faculty position
- 2020 Retired due to the expiration of term

- 2010-2018 President, the Japanese Society of Neuropathology
2014-2018 President, the International Society of Neuropathology
2018-2021 President, the Asian Society of Neuropathology
2003-2011 Editor-in-Chief, Neuropathology

In addition to teaching, he was actively involved in clinicopathological and laboratory research. His main areas of scientific interest were neurodegenerative diseases (tauopathy, α -synucleinopathy, TDP-43 proteinopathy, polyglutamine diseases, etc.), and CNS tumors and allied diseases (epileptogenic lesions, etc.). So far, he has been listed as an author in 730 articles, most of them (585) published in English.

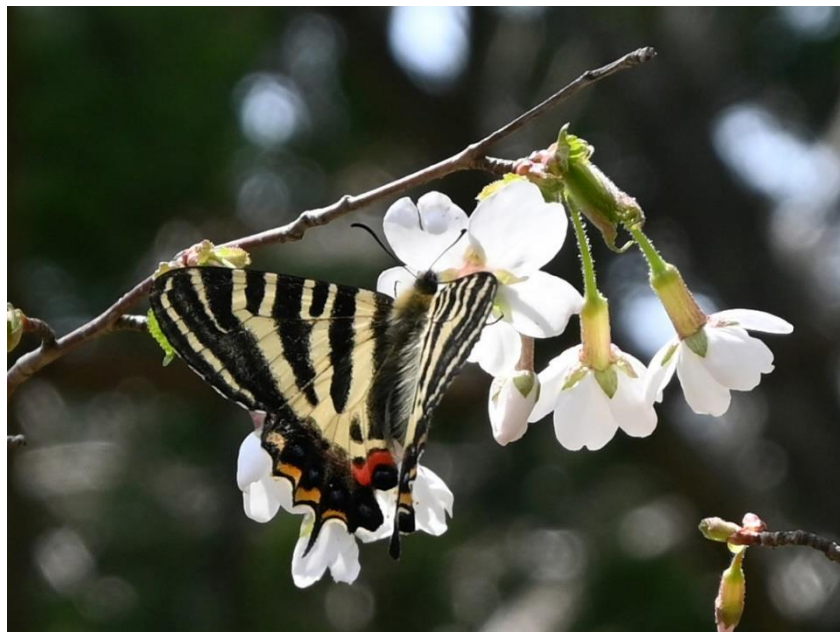
Present activity:

Head of Laboratory Medicine and Head of Research at Niigata Neurosurgical Hospital, Niigata (2020-)

Member of:

- The Japanese Society of Neuropathology (Honorary member, 2018-)
- The Japanese Society of Brain Tumor Pathology (Honorary member, 2019-)
- The Japanese Society of Pathology
- The Japanese Society of Neurology
- Advisory Board, Clinical Neuropathology
- Editorial Board, Folia Neuropathologica

Niigata, March 25, 2023



Luehdorfia japonica
Tagami-machi, Niigata Prefecture (April 10, 2022)