

Supplementary material 1

Table S1: List of affiliated Alzheimer’s Disease Research Centers (ADRCs) or brain banks for the submitted surveys (n=38). The city and state is provided for each. This information was obtained from answers to survey question: “What ADRC are you affiliated with?”

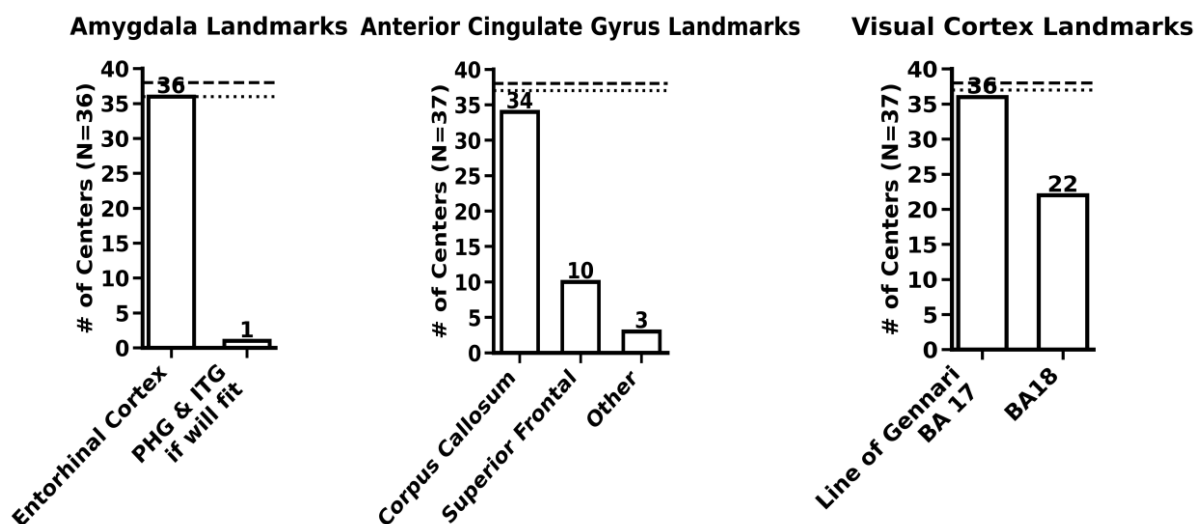
Affiliation	City	State
The University of Alabama at Birmingham	Birmingham	Alabama
Arizona ADC	Tucson	Arizona
University of California, San Diego	La Jolla	California
University of Southern California	Los Angeles	California
1Florida ADRC	Gainesville	Florida
Northwestern University	Chicago	Illinois
University of Kansas	Fairway	Kansas
University of Kentucky	Lexington	Kentucky
Massachusetts ADRC	Charlestown	Massachusetts
University of California, San Francisco	San Francisco	California
Knight ADRC (Washington University in St. Louis)	St. Louis	Missouri
University of California, Davis	Sacramento	California
University of California, Irvine	Irvine	California
Columbia University Medical Center	New York	New York
Mount Sinai ADRC	New York	New York
New York University	New York	New York
Duke-UNC ADRC	Durham, Chapel Hill	North Carolina
University of Pennsylvania	Philadelphia	Pennsylvania
University of Pittsburgh	Pittsburgh	Pennsylvania
South Texas ADRC	San Antonio	Texas
University of Washington	Seattle	Washington
Boston University	Boston	Massachusetts
Stanford University	Palo Alto	California
Oregon Health & Science University	Portland	Oregon
Rush ADC	Chicago	Illinois

University of Texas Southwestern Medical Center**	Dallas	Texas
Georgetown Brain Bank*	-	Washington D.C.
Mayo Clinic in Florida	Jacksonville	Florida
Emory University	Atlanta	Georgia
Indiana University	Indianapolis	Indiana
Wake Forest University	Winston-Salem	North Carolina
Cleveland ADRC	Cleveland	Ohio
University of Wisconsin	Madison	Wisconsin
University of Michigan	Ann Arbor	Michigan
Mayo Clinic in Minnesota	Rochester	Minnesota
University of New Mexico	Albuquerque	New Mexico
Cleveland Clinic	Las Vegas	Nevada
Vanderbilt University	Nashville	Tennessee

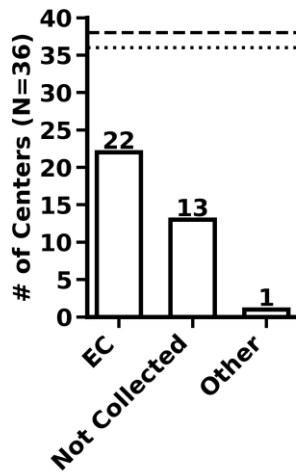
* Not an ADRC

** Previous affiliation with this ADRC.

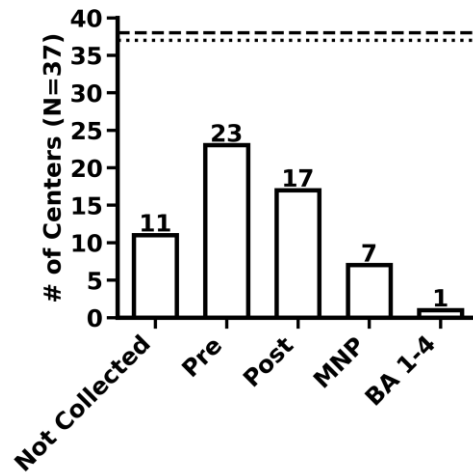
Figure S1: Bar plots showing the anatomical landmarks sampled in 15 brain regions in addition to regions shown in Fig 2, across the survey responses. The dashed line represents the total number of centers that submitted a survey (38). The dotted line represents the number of respondents that answered the question (varies per region). The N value in the vertical label corresponds to the value of the dotted line. All answers were non-mutually exclusive. Not collected: region was not collected or sampled at the center, BA: Brodmann’s area, DMV: dorsal motor nucleus of the vagus, EC: entorhinal cortex, ITG: inferior temporal gyrus, LGN: lateral geniculate nucleus, MNP: motor neurons present on microscopic evaluation, PHG: parahippocampal gyrus.



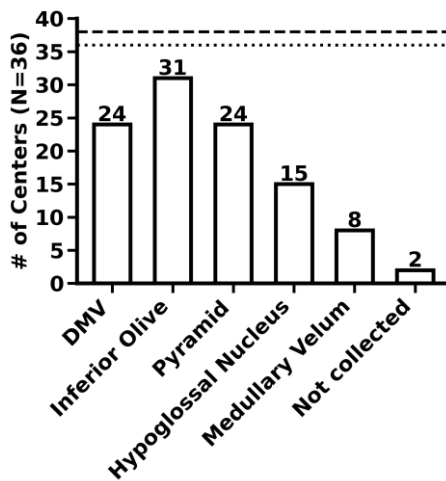
Anterior Hippocampus Landmarks



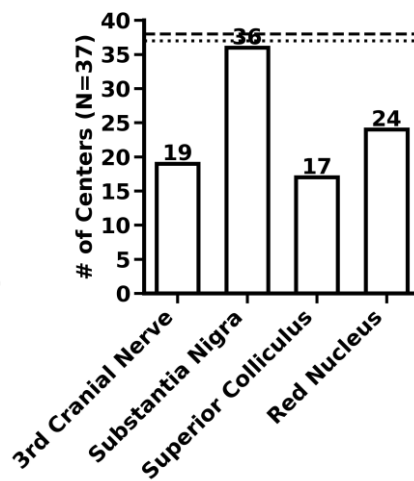
Central Gyri Landmarks



Medulla Landmarks



Midbrain Landmarks



Olfactory Bulb Landmarks Periventricular White Matter Landmarks

