

WESTFÄLISCHE
WILHELMS-UNIVERSITÄT
MÜNSTER



WWU statistical yearbook 2013 //



Foreword

Dear Reader,

Over the past few years transparency has been one of the recurring political demands made of public institutions and continues to be so today. Creating transparency is not simply a question of producing key figures, collecting data and evaluating them, which is sometimes a more than irksome task; but is also a clear prerequisite for any public communication which aims at honesty. Transparency exonerates, promotes understanding, creates a commitment to honest reporting. It is, therefore, just as indispensable for our University. This has been the case over the years and will continue to remain so.

One of our most important instruments in creating transparency is the Statistical Yearbook, which we now present for the year 2013. The Yearbook provides informed insights into past, current and future developments at Münster University. In particular, the aim of the data is to make national and international comparisons possible which, as in previous years, we are proud to subject ourselves to.

I do hope you enjoy reading this Yearbook, working with it and discovering what it has to offer!

Yours very sincerely,

A handwritten signature in black ink, which appears to read 'Ursula Nelles'.

Prof. Ursula Nelles
Rector of WWU

profile // 01

- Profile of WWU**
- › Structure 8
- › Staff 8
- › Buildings 8
- › Budget 9
- Research at WWU – “Finger on the Pulse”**
- › Institutions 9
- › Third-party funding 2013 10
- › Members on DFG Review Boards 10
- Studying and Teaching at WWU – Lively and Successful**
- › Study programmes 10
- › Number of students 11
- › Graduates 11
- WWU – International and Cosmopolitan**
- › Partnerships 11
- › “A Cosmopolitan Outlook” 11

- › Third-party funding expenditure in the years 2005–2013 by departments 24
- › Third-party funding expenditure by Collaborative Research Centres (CRC) funded by the DFG in 2005–2013 24
- C. Rankings**
- › German universities in the Academic Ranking of World Universities (Shanghai Ranking) 2013 26
- › The 20 German universities in the Leiden Ranking 2013 27
- › The 20 German universities in the QS World University Ranking 2013 by subject groups 28
- › The 20 German universities with the most research stays funded by the AvH Foundation in the Humboldt Rankings 2012 29
- › The 20 German universities with the highest DFG funding volume – The DFG Funding Atlas 2012 30
- › The 20 German universities with the highest DFG funding volume in the DFG Funding Atlas 2012 by scientific discipline 31
- › DFG funding volume by HEI and selected funding programmes in DFG Funding Atlas 2012 32
- D. Habilitations**
- › The 20 German universities with the highest number of habilitations in the year 2012 34
- › Habilitations by department from 2005–2013 36
- E. Doctoral Degrees**
- › The 20 German universities with the highest number of doctoral degrees taken in the academic year 2012 36
- › Doctoral degrees by subject groups in comparison with all universities in NRW (excluding medicine) 37
- › Doctoral degrees taken in the main subject in the academic years 2005–2012 by department/subject 38

research // 02

- A. Research Profile**
- › Funding periods for the Clusters of Excellence and the Collaborative Research Centres coordinated by WWU 14
- › Important projects for WWU’s research profile 14
- › Coordinated programmes of postgraduate education 17
- B. Third-Party Funding**
- › The 20 German universities with the highest amount of third-party funding income in 2011 in the financial years 2009, 2010 and 2011 (incl. medicine) 18
- › The 20 German universities with the highest amount of third-party funding income in the budget year 2011 by source (excluding medicine) 19
- › Development of third-party funding income in nationwide comparison 20
- › Development of third-party funding income (total) in nationwide comparison 20
- › Development of third-party funding income (excluding medicine) in nationwide comparison 21
- › Development of third-party funding income (medicine) in nationwide comparison 21
- › Third-party funding income by subject groups in comparison with all universities in NRW (excluding medicine) – parameter third-party funding in the performance-based budgeting for the financial year 2013 22
- › Grants as part of the 7th European research framework for universities (incl. medicine) in NRW during years 2007 to 2013 22
- › Development of third-party funding expenditure since 2005 23
- › Third-party funding expenditure (incl. medicine) by source of origin in the budget year 2013 23

studying and teaching // 03

- A. Number of Students**
- › The 20 German universities with the highest number of students in the winter semester 2012/13 42
- › Female students at the 20 German universities with the highest number of students in the winter semester 2012/13 43
- › Development in the number of students, with a breakdown of figures, in each winter semester 44
- › WWU students by department in the winter semester 2013/14 46
- › Number of students from 1910–2013 (average per year) 46
- › WWU students by target degree (in their main subject) 48

- › Students at WWU by department/subject 49
- › Origin of German students in the winter semester 2013/14 by Federal State where they obtained their general qualification for university entrance 52
- › Regional origin of foreign students in the winter semester 2013/14 by continent 52
- B. Number of First-Year Students**
- › First-year students at WWU by target degree 53
- › Number of first-year students 1990–2013 54
- C. Capacity**
- › Development of capacity utilization (excluding medicine) by department/subject 54
- D. Examinations and Graduates**
- › The 20 German universities with the highest number of examinations passed (by type of degree) in the academic year 2012 56
- › Graduates by subject groups in comparison with all universities in NRW (excluding medicine) – parameter graduates in the performance-based budgeting for the financial year 2013 58
- › Graduates in their main subject by department/course of study in the academic years 2004–2012 59
- › Number of examinations passed by type of degree 1996–2012 62
- › Number of examinations passed by type of degree 1994–2012 62
- E. Duration of Study**
- › Average duration of study (median) in selected subjects at WWU in the academic year 2012 in national comparison 64
- F. Academic Success**
- › Development of academic success by type of degree 65
- G. CHE University Ranking 2011–2013**
- › Student rating of overall study situation at WWU 66
- › Student assessment of selected aspects of studying and teaching at WWU 67
- H. Graduate Survey**
- › Graduates' assessment of their professional competence 68
- › Results regarding career entry and assessment of employment 69

budget and personnel // 04

- › Budget of WWU (excluding medicine) in the years 2007–2012 72
- › Key data on current basic funding at selected universities (excluding medicine) compared to the rest of the country (“German U15”) 72
- › WWU's cost structure in the financial year 2012 (excluding medicine) 73

- › Performance-oriented budgeting for the financial year 2013 (excluding medicine) – parameters and results 74
- › Performance-oriented budgeting of the Faculty of Medicine for the financial year 2013 – parameters and results 76
- › Tutorial staff by department (excluding medicine) and source of funding in 2013 – full-time employee equivalents 76
- › WWU Münster in the 2013 CEWS higher education ranking, based on gender equality 78
- › Diagram showing the ‘leaky pipeline’ relating to percentages of women and men in their academic careers at WWU Münster 78
- › Number of female professors in comparison with all universities in NRW (excluding medicine) – parameter gender equality in the performance-based budgeting for the financial year 2013 79
- › Number of female academic staff in qualification positions in 2013 by department (excluding medicine) 79
- › Appointment procedures completed in 2013 80
- › Number of scheduled retirements of professors in 2013 to 2025, by department 82

infrastructure // 05

- Buildings**
- › Main useable areas by department (excluding medicine) in 2009–2013 86
- › Share of main useable area by department at WWU in 2013 86
- › Building stock of WWU (excluding medicine) by year of construction 87
- › Development of energy costs at WWU (excluding medicine) in the years from 2001–2013 87
- University and Regional Library (ULB)**
- › Library system at WWU 88
- Learning and Working in the ULB**
- › Workspace 88
- › Development of total media stocks 2004–2013 89
- › Use of ULB catalogue 2009–2013 89
- › Use of ULB stocks in 2013 89
- Data Processing Centre**
- › Structural Data of the Data Processing Centre (ZIV) in 2013 90
- › Communication network 90
- › Central systems 91
- › Applications / Tasks and Service 91

glossary // 06

- › List of Abbreviations 94
- › Definitions 96
- › Editorial Information 100



Profile of WWU

› Structure

15

departments

› Staff

6,850

(incl. medicine, incl. third-party funding staff, excluding assistants and lecturers)

548

professors

4,400

research assistants

1,900

further staff

7,000

additional employees at Münster University Hospital

› Buildings

218

university buildings, integrated into the city of Münster

263,037 m²

main useable area (excluding medicine)

› Budget

€ 601,400,000

total budget of WWU in 2013

€ 433,300,000

of which WWU budget (excluding medicine)

€ 168,100,000

of which budget of the Faculty of Medicine

Research at WWU – “Finger on the Pulse”

› Institutions

2

Clusters of Excellence

7

Collaborative Research Centres with WWU spokesperson

2

Priority Programmes (Coordination)

3

Research Units (Coordination)

3

Research Training Groups

3

International Research Training Groups

2

Marie Curie Initial Training Networks

6

Internal Graduate Schools

9

Emmy Noether-Young Academics Research Groups

1

Research Schools

1

International Max Planck Research School

1

Max Planck Institute

1

Fraunhofer Institute (branch)

1

Leibniz Institute

25

academic centres

14

affiliated institutes

› Third-Party Funding 2013

€ 143,100,000

Annual increase approx. 8% since 2009

› Members on DFG Review Boards

12

WWU in total

3

Natural Sciences

5

Life Sciences

4

Social Sciences and Humanities

Studying and Teaching at WWU – Lively and Successful

› Study programmes

› 120

subjects

› 275

courses of study

› Number of students

42,592

students (winter semester 2013/14)

53.6%

women

› Graduates

~6,700

degrees in 2012

59.3%

women

WWU – International and Cosmopolitan

› Partnerships

› 550

partnership agreements with universities and academic institutions all over the world: from nearby Enschede in the Netherlands to Beijing in China

Focus on Latin America, southern and eastern Asia and the Baltic States

International exchange programmes

› “A Cosmopolitan Outlook”

~ 700

visiting academics

1,000

WWU students abroad

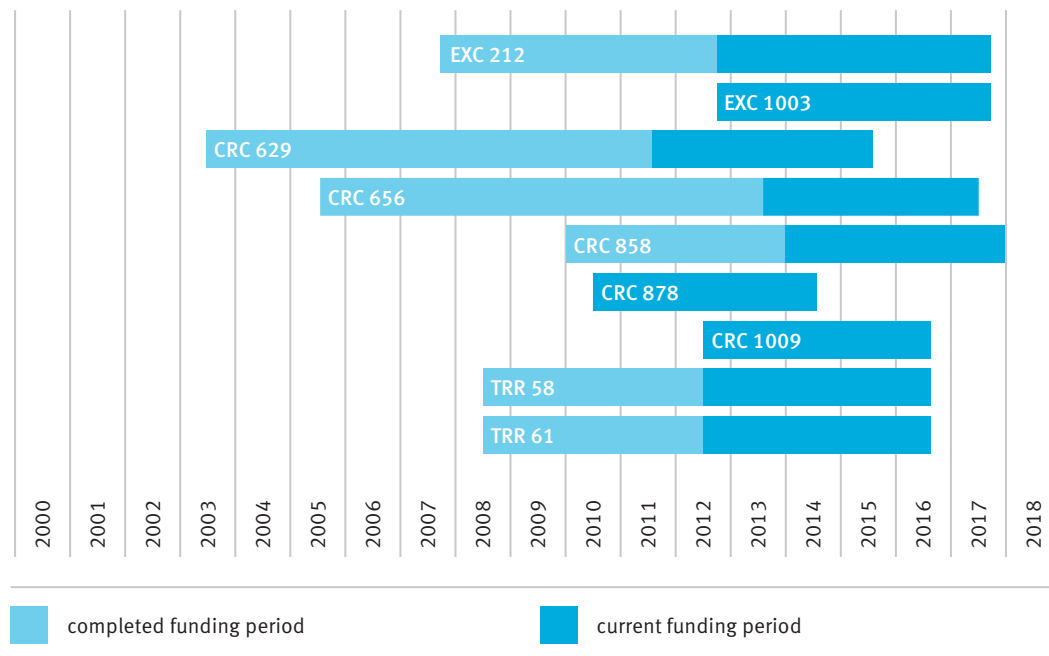
8.0%

foreign students (3,403), especially from Turkey, eastern Europe and southern and eastern Asia



A. Research Profile

› Funding periods for the Clusters of Excellence and the Collaborative Research Centres coordinated by WWU



› Important projects for WWU's research profile

Type	Source of funding	Title	Funding period (beginning and end)	Funding level (in the current project phase)
Cluster of Excellence	DFG	EXC 212 Religion and Politics in Pre-Modern and Modern Cultures (with integrated Graduate School)	01.11.07–31.10.17	€ 33,733,000 (for 5 years)
		EXC 1003 Cells in Motion – CiM: Imaging to Understand Cellular Behaviour in Organisms (with integrated Graduate School)	01.11.12–31.10.17	€ 33,832,800 (for 5 years)
Collaborative Research Centres	DFG	CRC 629 Molecular Cell Dynamics: Intracellular and Cellular Migration	01.07.03–30.06.15	€ 9,000,000 (for 4 years)
		CRC 656 Molecular Cardiovascular Imaging (MoBiI) – from Mouse to Man	01.07.05–30.06.17	€ 9,000,000 (for 4 years)
		CRC 858 Synergetic Effects in Chemistry – from Additivity towards Cooperativity	01.01.10–31.12.17	€ 9,000,000 (for 4 years)
		CRC 878 Groups, Geometry and Actions	01.07.10–30.06.14	€ 9,000,000 (for 4 years)
		CRC 944 Physiology and Dynamics of Cellular Microcompartments (participation)	01.01.11–31.12.14	€ 8,500,000 (total for 4 years)

Continued ›

Type	Source of funding	Title	Funding period (beginning and end)	Funding level (in the current project phase)
Collaborative Research Centres	DFG	CRC 1 009 Breaking Barriers – Immune Cells and Pathogens at Cell/Matrix Barriers	01.07.12–30.06.16	€ 8,000,000 (for 4 years)
		TRR 3 Mesial Temporal Lobe Epilepsies (participation)	01.07.06–30.06.14	€ 8,000,000 (total for 4 years)
		TRR 58 Fear, Anxiety, Anxiety Disorders	01.07.08–30.06.16	€ 10,000,000 (for 4 years)
		TRR 61 Multilevel Molecular Assemblies – Structure, Dynamics and Functions	01.07.08–30.06.16	€ 7,000,000 (for 4 years)
		TRR 128 Initiating/Effector versus Regulatory Mechanisms in Multiple Sclerosis – Progress towards Tackling the Disease (participation)	01.07.12–30.06.16	€ 3,500,000 (participation by WWU for 4 years)
Priority Programmes	DFG	SPP 1399 Host-Parasite Coevolution – Rapid Reciprocal Adaptation and its Genetic Basis	01.08.09–31.07.15	€ 5,000,000 (total for 3 years)
		SPP 1409 Public Understanding of Fragile or Conflicting Scientific Evidence	01.07.09–30.06.15	€ 2,800,000 (total for 3 years)
Research Units	DFG	FOR 964 Calcium Signaling via Protein Phosphorylation in Plant Model Cell Types during Environmental Stress Adaption	01.07.08–30.06.14	€ 910,000 (participation by WWU for 3 years)
		FOR 1041 Germ Cell Potential	01.05.08–30.04.14	€ 2,000,000 (participation by WWU for 3 years)
		FOR 1209 Basic Theoretical Questions of Justifying Norms in Medical Ethics and Biopolitics	01.01.10–31.12.13	€ 4,600,000 (total for 4 years)
Reinhart-Koselleck-Project	DFG	Dynamic Nanomechanics of a Living Cell (Prof. Oberleithner, Medicine)	01.08.09–31.07.14	€ 900,000
Grants for Equipment (selection)	DFG	WO 851/1 Roman Inquisition and Index Congregation in the Modern Period	01.01.02–31.12.15	€ 1,023,700 (for 3 years)
	Academy of Sciences	Novum Testamentum Graecum. Editio critica maior (ECM)	01.01.08–31.12.30	€ 4,409,044
ERC Advanced Grant	EU	Topological Dynamics of Rings and C*-algebras (Prof. Cuntz, Mathematics)	2010–2015	€ 2,500,000
		Molecular and Cellular Mechanisms Promoting Single-Cell Migration in vivo (Prof. Raz, Medicine)	2010–2015	€ 1,960,000
		Development of Frustrated Lewis Pair Chemistry (Prof. Erker, Chemistry)	2011–2016	€ 2,000,000
		Angiogenic Growth, Specialization, Ageing and Regeneration of Bone Vessels (Prof. Adams, Medicine/MPI)	2013–2018	€ 2,500,000

Continued ›

Type	Source of funding	Title	Funding period (beginning and end)	Funding level (in the current project phase)	
ERC Starting Grant	EU	The Social Fabric of Virtual Life: A Longitudinal Multimethod Study (Prof. Quandt, Communication Studies)	2009–2014	€ 1,800,000	
		New Concepts for Utilizing a Ubiquitous (Non-) Functional Group (Prof. Glorius, Chemistry)	2010–2015	€ 1,500,000	
		DNA Based Nanometry: Exploring Chromatin Structure and Molecular Motors (Prof. Seidel, Biology)	2010–2015	€ 1,500,000	
		Carbohydrate Mimesis using Fluorinated Sugars for Chemical Biology (Prof. Gilmour, Chemistry)	2013–2018	€ 1,250,000	
Humboldt Professorship	AvH-Foundation/BMBF	Prof. Weiss, Mathematics	01.04.12–31.03.17	€ 3,500,000	
Large-Scale Integrating Project	EU	Imaging Neuroinflammation in Neurodegenerative Diseases (INMiND)	01.03.12–28.02.17	€ 11,998,478 (total for 5 years)	
Individual Grants (selection)	BMBF	Joint Research Project KATRIN: Measuring the Neutrino Mass from Tritium Beta Decay	01.07.08–30.06.15	€ 810,000 (for 4 years)	
		Mercury Radiometer and Thermal Infrared Spectrometer (MERTIS) for the BepiColombo Mission – Phase C2/D	01.03.09–28.02.13	€ 11,392,200	
		National Research Platform for Zoonoses	01.01.09–30.05.15	€ 600,000 (for 3 years)	
		Dyscalculia in Elementary School – Development and Evaluation of a Working Memory-Based Assessment Battery and an Integrative Training Programme	01.12.10–30.11.16	€ 398,444 (for 3 years)	
		Establishment of a Centre for Islamic Theology	2011–2017	€ 3,300,000	
		Chitosan/Copper-Nanoparticles and Biopesticides for Knowledge-based Plant Protection, Subproject Münster (CuChi-BCA)	01.02.11–31.01.15	€ 1,172,076	
		The Competence Network "Dynamics of Religion in Southeast Asia" (DORISEA). Research Project: Politicized Islam in Indonesia: Between "Scripturalism" and "Neo-Sufism"	01.04.11–31.03.15	€ 368,097 (for 3 years)	
		Mechanisms of Interaction between Nanoparticles and Cells (MINAC)	01.08.11–31.07.14	€ 2,700,000	
		Sustainable Land Management and Adaptation Strategies to Climate Change for the Western Siberian Corn-Belt (SASCHA)	01.08.11–31.07.16	€ 1,800,000 (participation by Münster)	
		MEET Hi-END – Materials and Components for Batteries with High Energy Density	01.10.12–30.09.15	€ 2,815,491 (for 3 years)	
		Insider – Development and Design of a Novel Anion Intercalating Battery System	01.10.12–31.12.16	€ 2,835,938 (for 4 years and 2 months)	
		InPoSec – Integrated Postal Security	01.06.12–31.05.15	€ 814,866 (for 3 years)	
		BMELV	Breeding and Cultivation of Russian/Caucasian Dandelions – Molecular and Physico-Chemical Analysis	01.07.13–30.06.16	€ 532,740 (for 3 years)
		Deutsche Telekom Foundation	Establishment and Funding of a Professorship for Pre-School/Early Education in Natural Sciences	01.08.08–31.07.14	€ 1,032,000

This summary contains research programmes funded up to and including 2013.

› Coordinated programmes of postgraduate education

Type	Source of funding	Title	Funding period (beginning and end)	Funding level (in the current project phase)
Research Training Groups	DFG	RTG 1409 Molecular Interactions of Pathogens with Biotic and Abiotic Surfaces	01.10.06–30.09.15	€ 4,160,000 (for 4.5 years)
		RTG 1712 Trust and Communication in a Digitized World	01.04.12–30.09.16	€ 3,598,235 (for 4.5 years)
		RTG 1886 Literary Form – Historical and Cultural Formations of Aesthetic Models	01.10.13–31.03.18	€ 2,066,825 (for 4.5 years)
International Research Training Groups	DFG	IRTG 1143 Complex Functional Systems in Chemistry: Design, Development and Applications	01.01.06–31.12.14	€ 5,000,000 (for 4.5 years)
		IRTG 1498 Semantic Integration of Geospatial Information	01.10.08–28.02.13	€ 1,686,228 (for 4.5 years)
		IRTG 1549 Molecular and Cellular Glyco-Sciences	01.10.09–31.03.14	€ 3,500,000 (for 4.5 years)
Marie Curie Initial Training Network	EU	Diasporic Constructions of Home and Belonging (CoHaB)	01.11.11–31.10.15	€ 3,354,340 (for 4 years)
		Ion Transport Proteins in Control of Cancer Cell Behaviour (IONTRAC)	01.10.11–30.09.15	€ 3,925,580 (for 4 years)
Research School	State of NRW	Molecules and Materials – A Common Design Principle	since 01.10.10	€ 2,945,000 (for 7 years)
Graduate School	State of NRW	Sustainable Chemical Synthesis (SusChemSys) (participation)	01.01.12–30.04.15	€ 1,500,000 (in total for 3 years)
International Max Planck Research School	Max Planck Society	International Max Planck Research School – Molecular Biomedicine (IMPRS-MBM)	01.10.09–30.09.15	€ 1,848,000 (for 6 years)
Research Training Group	Mercator Foundation	Islamic Theology	2010–2016	€ 3,600,000 (in total)
Emmy Noether-Young Academics Research Groups	DFG	Mechanisms of Neutrophil Activation in Inflammation (Emmy Noether Programme Zarbock)	01.04.08–31.03.13	€ 1,224,652 (for 5 years)
		The Role of Virus Structure and Host Cell Membrane Trafficking as well as Signaling Factors in Human Papillomavirus Type 16 Endocytosis (Emmy Noether Programme Schelhaas)	01.10.08–30.04.14	€ 1,358,114 (for 5 years)
		Asymmetrical Cell Division as a Mechanism of Regulation of Proliferation and Differentiation of Adult Neural Stem Cells (Emmy Noether Programme Schwamborn)	01.10.08–30.09.13	€ 1,627,446 (for 5 years)
		Thrombocytes as Regulators of Vascular Integrity (Emmy Noether Programme Görge)	01.04.09–31.03.14	€ 1,159,034 (for 5 years)
		Family Values and Social Change: The US-American Family in the 20th Century (Emmy Noether Programme Heinemann)	01.03.09–30.11.14	€ 859,700 (for 5 years)
		Understanding and Controlling Nanoscale Spin Coupling in Molecular Spintronic Materials (Emmy Noether Programme Wegner)	01.08.09–30.09.14	€ 1,598,270 (for 5 years)
		Political Philosophy as a Resource for Plausible Normfoundation in Bioethics (Emmy Noether Programme Buyx)	since 01.03.12	€ 1,052,400
		Sexual Selection and Sexual Conflict as Engines of Evolutionary Change: Diversification and Speciation (Emmy Noether Programme Fricke)	01.06.12–31.05.15	€ 1,131,362
		Regulation of the Phenotypic Stability of Chondrocytes by Transmembrane Heparan Sulfate Proteoglycans of the Syndecan Family (Emmy Noether Programme Bertrand)	01.01.13–31.12.17	€ 853,700
		Erasmus Mundus	EU	Scholarships for the Master's Degree Programme in Geospatial Technologies

This summary contains research programmes funded up to and including 2013.

B. Third-Party Funding

› The 20 German universities with the highest amount of third-party funding income in 2011 in the financial years 2009, 2010 and 2011 (incl. medicine)

University	Year					
	2011		2010		2009	
	Third-party funding income in total (€ 1,000)	Rank	Third-party funding income in total (€ 1,000)	Rank	Third-party funding income in total (€ 1,000)	Rank
TU Munich	269,405	1	254,851	2	228,233	2
TH Aachen	263,386	2	267,039	1	250,066	1
U Heidelberg	206,755	3	200,726	5	193,617	4
U Munich	206,170	4	204,727	3	182,250	5
TU Dresden	203,308	5	202,377	4	155,198	6
U Freiburg i.Br.	169,542	6	155,219	7	142,341	7
Charité Universitätsmedizin Berlin*	167,161	7	164,792	6	-	-
TU Berlin	158,923	8	146,189	8	125,405	8
Karlsruhe Institute of Technology (KIT)	156,715	9	137,087	9	114,755	13
U Hamburg	151,135	10	134,919	10	103,540	17
U Stuttgart	145,617	11	128,850	11	112,245	14
U Erlangen-Nuremberg	143,867	12	124,315	13	117,520	11
U Göttingen	138,228	13	115,903	16	109,461	15
U Cologne	138,085	14	111,036	20	101,054	18
U Bonn	137,606	15	117,402	15	124,352	9
U Tübingen	127,445	16	121,172	14	121,832	10
U Münster	126,410	17	126,446	12	116,114	12
U Frankfurt a.M.	123,269	18	115,408	18	107,159	16
TU Darmstadt	119,213	19	115,425	17	100,512	19
FU Berlin	107,749	20	111,448	19	95,746	20
Top 20 in total	3,259,990		3,055,331		2,810,224	
Universities in total	5,812,423		5,436,293		4,941,430	

Source: German Federal Statistics Office, subject series 11 (Statistisches Bundesamt, Fachserie 11)

* For the financial year 2009 third-party funding of the Charité Berlin was assigned to HU Berlin.

› The 20 German universities with the highest amount of third-party funding income in the budget year 2011 by source (excluding medicine)

University	Third-party funding income in total (€ 1,000)	Rank	Thirdparty funding income per professor (€ 1,000)	Percentage of funding by source/institution (%)				
				DFG	Federal government	EU	Foundations etc.	Commercial business (etc.)
TU Munich	213,438	2	597.2	24.4	32.8	3.2	11.3	26.2
TH Aachen	230,851	1	716.9	30.0	22.8	4.5	2.6	24.6
U Heidelberg	102,046	11	358.1	57.1	18.0	6.6	12.9	2.5
U Munich	106,855	9	206.5	58.4	12.3	7.7	8.9	7.7
TU Dresden	167,167	3	436.5	21.7	35.1	20.5	2.5	15.9
U Freiburg i.Br.	95,907	13	321.8	54.5	18.3	6.5	5.2	8.1
Charité Universitätsmedizin Berlin	-	-	-	-	-	-	-	-
TU Berlin	158,911	4	445.8	27.9	29.8	13.6	2.9	12.6
Karlsruhe Institute of Technology (KIT)	156,715	5	605.1	38.5	21.7	8.1	5.5	21.7
U Hamburg	90,309	17	163.8	56.2	20.3	6.1	4.4	11.8
U Stuttgart	145,617	6	605.5	27.2	38.7	11.1	0.9	21.1
U Erlangen-Nuremberg	106,105	10	276.3	35.0	21.3	5.3	1.4	36.4
U Göttingen	91,925	15	260.8	56.3	15.5	5.2	0.0	23.0
U Cologne	75,710	23	187.2	69.9	15.1	0.3	4.3	5.7
U Bonn	99,795	12	273.0	50.9	28.1	4.1	4.7	2.8
U Tübingen	56,721	28	173.2	43.9	22.0	6.8	11.4	12.5
U Münster	79,564	20	198.9	48.7	20.3	3.8	3.9	17.3
U Frankfurt a.M.	84,042	19	198.7	47.9	23.4	8.4	3.5	16.2
TU Darmstadt	119,213	7	443.2	38.0	21.4	7.1	1.7	28.5
FU Berlin	107,749	8	224.5	52.1	18.6	5.4	6.2	11.0
Top 20 in total	2,288,641		309.3	40.4	24.3	7.5	4.8	17.5
Universities in total	4,266,497		241.2	38.5	24.1	8.4	5.0	18.1

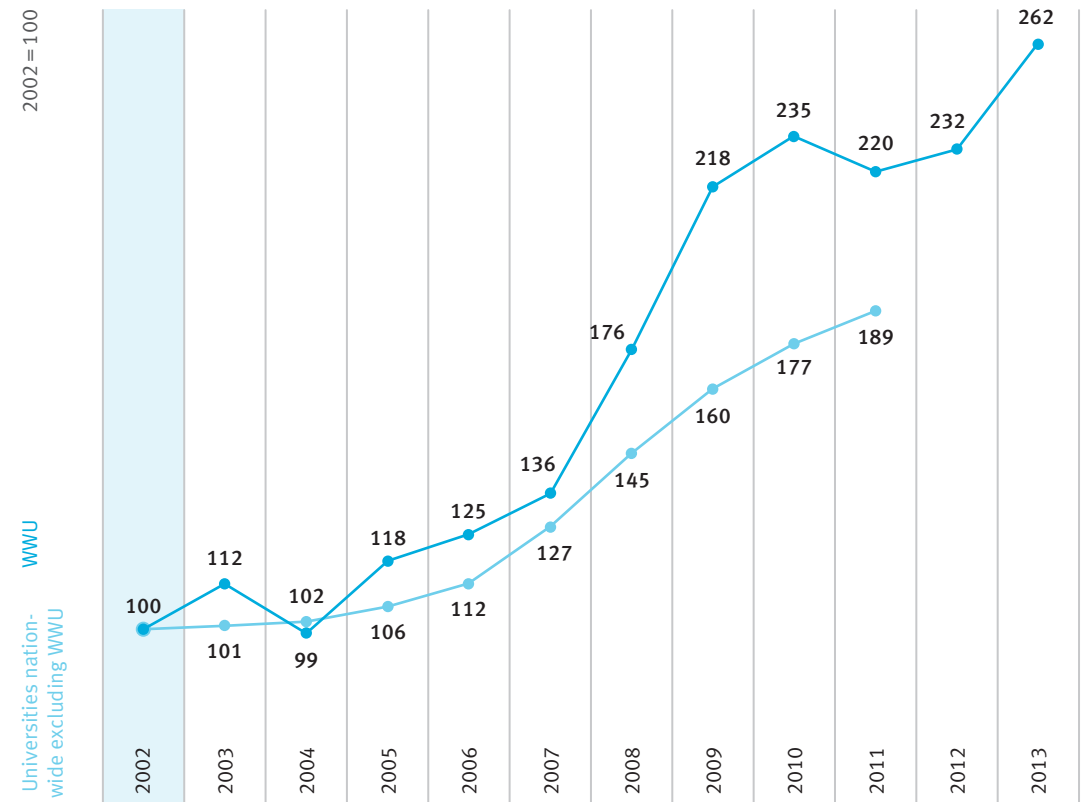
Source: German Federal Statistics Office, subject series 11 (Statistisches Bundesamt, Fachserie 11)

› Development of third-party funding income in nationwide comparison

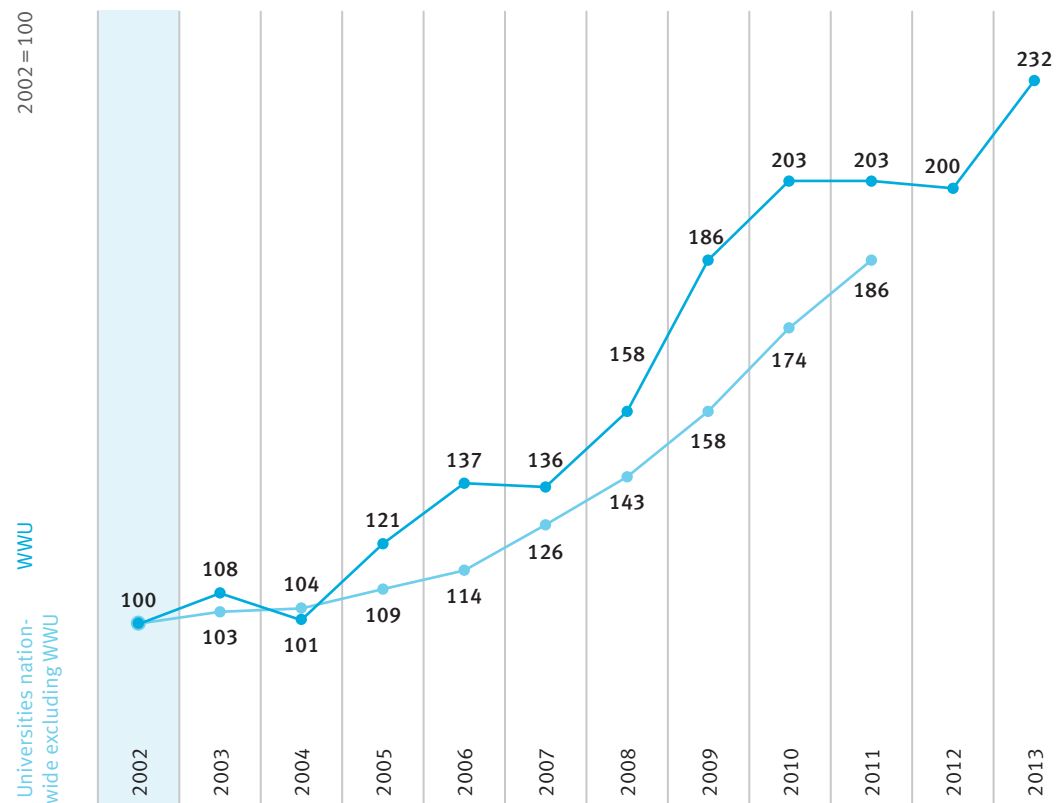
	Third-party funding income (in € 1,000)							
	2006	2007	2008	2009	2010	2011	2012	2013
WWU (total)	85,586	84,933	98,519	116,114	126,446	126,410	124,633	144,891
WWU (excluding medicine)	45,343	49,146	63,870	78,801	85,166	79,564	84,130	95,087
WWU (medicine)	40,243	35,786	34,650	37,314	41,279	46,846	40,503	49,804
Universities nationwide (total) excluding WWU	3,477,363	3,831,594	4,362,888	4,825,316	5,309,848	5,686,013		
Universities nationwide (excluding medicine) excluding WWU	2,490,502	2,818,248	3,213,044	3,556,295	3,918,078	4,186,933		
Universities nationwide (medicine) excluding WWU	986,861	1,013,346	1,149,844	1,269,021	1,391,769	1,499,080		

Source: German Federal Statistics Office, subject series 11 (Statistisches Bundesamt, Fachserie 11) (2006–2011)
WWU statistics (2012–2013)

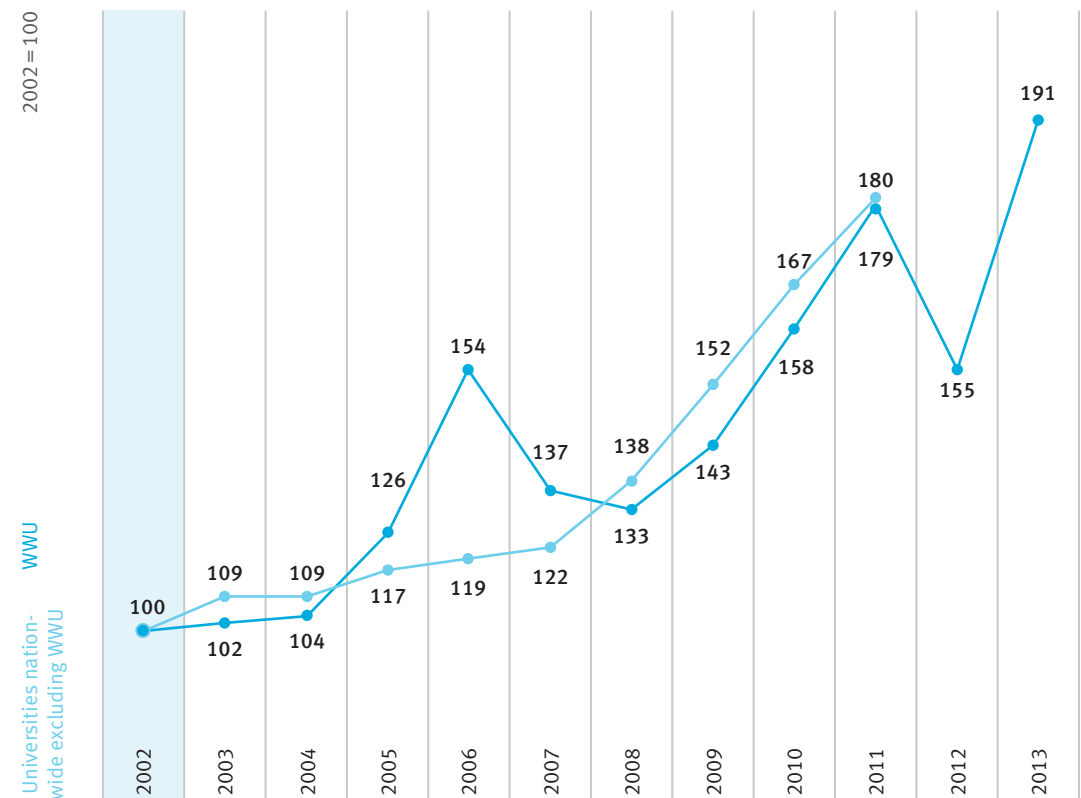
› Development of third-party funding income (excluding medicine) in nationwide comparison



› Development of third-party funding income (total) in nationwide comparison



› Development of third-party funding income (medicine) in nationwide comparison



› Third-party funding income by subject groups in comparison with all universities in NRW (excluding medicine) – parameter third-party funding in the performance-based budgeting for the financial year 2013

Higher Education Institution	Third-party funding income (average of the years 2009 and 2010*) – in € 1,000					%
	Humanities and Social Sciences	Natural Sciences	Engineering	Central Institutes	Third-party funding expenditure in total	
TH Aachen	7,530	41,169	138,672	43,160	230,530	28.16
U Bonn	11,313	58,593	1,326	15,189	86,421	10.56
U Münster	19,641	44,223	166	19,227	83,257	10.17
U Bochum	18,351	32,194	24,620	4,723	79,888	9.76
U Dortmund	8,516	11,782	28,546	11,801	60,645	7.41
U Duisburg-Essen	13,488	19,024	13,557	11,693	57,762	7.05
U Cologne	12,858	38,530	0	0	51,388	6.28
U Bielefeld	13,493	27,290	0	8,013	48,796	5.96
U Paderborn	4,860	12,197	13,974	5,717	36,748	4.49
U Düsseldorf	3,191	13,439	0	6,921	23,551	2.88
U Wuppertal	3,078	9,902	7,454	646	21,080	2.57
U Siegen	6,797	4,457	8,880	526	20,660	2.52
DSH Cologne	9,412	0	0	0	9,412	1.15
FeU Hagen	2,906	1,282	671	3,752	8,611	1.05
Total	135,433	314,082	237,865	131,369	818,748	100.00

Source: MIWF NRW – Department 111

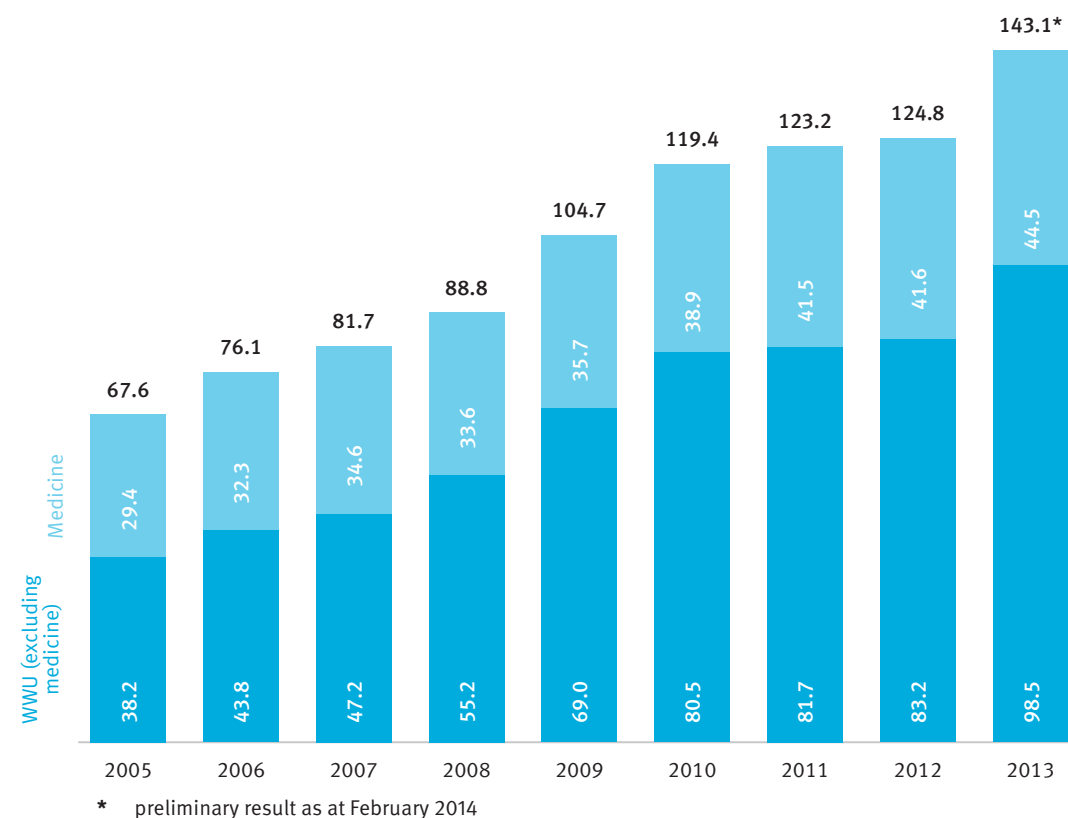
* Weighted average from 2009 (30%) and 2010 (70%)

› Grants as part of the 7th European research framework for universities (incl. medicine) in NRW during years 2007 to 2013

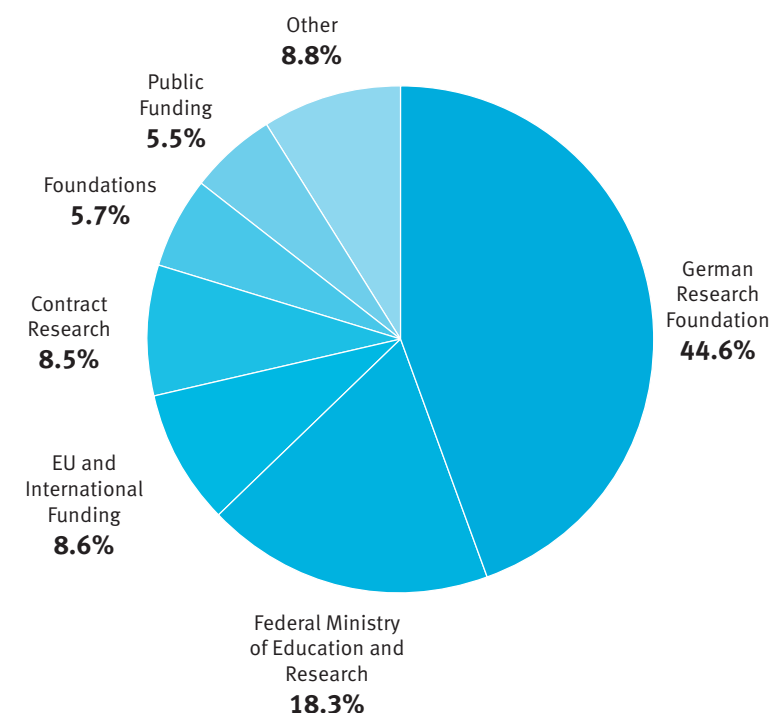
University	Approved funding (in €)
TH Aachen	99,700,000
U Münster	49,800,000
U Bonn	48,300,000
U Cologne	39,900,000
U Duisburg-Essen	38,200,000
U Bochum	32,400,000
U Dortmund	27,300,000
U Düsseldorf	20,600,000
U Bielefeld	17,600,000
U Siegen	16,100,000
U Paderborn	10,000,000
U Wuppertal	9,700,000
FeU Hagen	2,400,000
DSH Cologne	1,200,000

Source: MIWF NRW (Preliminary result)

› Development of third-party funding expenditure since 2005 (in € m)



› Third-party funding expenditure (incl. medicine) by source of origin in the budget year 2013



› Third-party funding expenditure in the years 2005–2013

Department	2005	2006	2007
DEP 01 Protestant Theology	682,239	547,579	600,859
DEP 02 Roman Catholic Theology	1,509,221	1,608,966	1,415,205
DEP 03 Law	1,229,983	1,218,952	1,286,156
DEP 04 Economics	3,129,802	3,614,467	3,851,335
DEP 05 Medicine	29,400,041	32,295,477	34,567,429
DEP 06 Education and Social Studies	1,573,238	1,945,872	2,218,876
DEP 07 Psychology and Sport Studies	1,232,493	1,454,159	1,625,763
DEP 08 History and Philosophy	2,755,209	3,066,621	3,253,311
DEP 09 Philologies	862,352	558,924	707,864
DEP 10 Mathematics and Computer Sciences	1,745,258	1,967,684	2,210,051
DEP 11 Physics	5,529,413	7,259,056	6,757,399
DEP 12 Chemistry and Pharmacy**	5,413,498	5,815,082	6,616,522
DEP 13 Biology	3,734,454	5,713,489	5,610,354
DEP 14 Geosciences	4,008,300	5,111,479	6,354,781
DEP 15 Music Department	23,543	14,657	36,597
Departments in total	62,829,044	72,192,462	77,112,501
WWU in total (incl. central institutions)	67,582,689	76,058,631	81,727,405

* Preliminary result as at February 2014

** since the financial year 2013 not including the third-party funding of the battery research centre (MEET)

› Third-party funding expenditure by Collaborative Research Centres (CRC)

Department	2005	2006	2007
DEP 01 Protestant Theology	6,240	0	0
DEP 02 Roman Catholic Theology	199,771	249,075	280,393
DEP 03 Law	94,128	88,946	94,098
DEP 05 Medicine	2,703,525	3,616,841	3,684,351
DEP 08 History and Philosophy	1,080,751	1,283,579	1,516,497
DEP 09 Philologies	169,099	89,219	78,515
DEP 10 Mathematics and Computer Sciences	1,117,513	1,410,536	1,471,276
DEP 11 Physics	242,694	373,277	463,950
DEP 12 Chemistry and Pharmacy	2,088,002	2,081,978	2,118,258
DEP 13 Biology	876,363	1,785,998	1,139,444
Departments in total	8,578,087	10,979,449	10,846,781
WWU in total (incl. overheads)			

* Preliminary result as at February 2014

by departments (in €)

2008	2009	2010	2011	2012	2013*
1,143,441	1,560,576	1,740,394	1,599,322	1,349,281	1,228,578
1,705,617	2,355,707	2,442,074	2,398,602	1,882,792	1,496,250
1,657,271	2,492,777	3,032,048	2,899,671	2,596,996	2,924,530
4,137,036	2,923,939	2,812,375	3,083,130	3,788,446	3,860,170
33,614,347 ^r	35,742,301	38,902,678	41,535,068	41,582,182	44,511,612
2,623,267	3,292,337	3,522,070	4,227,636	3,354,258	3,928,122
1,674,635	1,791,709	2,085,749	2,206,358	2,430,825	3,094,893
4,271,982	6,497,714	7,367,829	7,105,159	4,640,727	5,046,633
1,219,193	2,293,456	2,430,423	4,041,930	2,204,947	2,830,991
2,941,818	3,358,354	3,458,583	3,569,908	3,703,783	4,879,777
6,737,738	7,508,908	7,644,081	8,792,020	9,252,369	8,234,442
7,009,955	9,669,398	19,852,850	17,483,041	15,808,373	12,342,642
5,967,016	7,414,643	8,617,315	8,207,011	8,993,246	11,230,222
8,927,381	11,472,374	7,124,274	7,109,019	6,480,404	5,629,543
27,537	17,375	23,965	18,154	43,843	76,016
83,658,234	98,391,568	111,056,706	114,276,030	108,112,473	111,314,420
88,779,085	104,670,152	119,415,087	123,221,232	124,819,964	143,051,806

^r subsequent correction

Source: Dept. 5

funded by the DFG in 2005–2013 (in €)

2008	2009	2010	2011	2012	2013
0	0	0	0	0	0
272,846	130,677	147,236	124,081	150	245
108,109	45,714	38,328	56,654	0	14,280
4,428,304	4,328,164	4,749,444	5,333,164	5,080,478	8,060,262
1,529,677	1,224,226	1,245,694	1,229,333	149,524	171,325
80,267	96,621	145,177	119,720	0	8,581
1,728,492	1,820,945	906,154	1,827,916	1,905,043	2,308,095
878,446	1,361,187	946,215	1,066,660	1,084,982	1,366,425
2,229,479	1,240,386	2,278,048	2,009,623	2,343,350	2,455,452
1,180,725	1,149,196	1,833,811	1,574,182	2,445,808	1,975,278
12,436,345	11,397,115	12,290,106	13,341,334	13,009,335	16,359,944
12,456,345	11,447,256	12,290,106	13,350,632	13,009,893	16,359,944

Source: Dept. 5

C. Rankings

› German universities in the Academic Ranking of World Universities (Shanghai Ranking) 2013

University	National Rank	Rank worldwide	Indicator					
			Alumni	Award	HiCi	N&S	PUB	PCP
TU Munich	1	50	36.3	21.7	24.6	22.4	46.7	30.4
U Heidelberg	2	54	14.1	25.5	19.1	28.5	51.1	30.9
U Munich	3	61	26.7	19.3	16.2	28.1	51.2	30.4
U Freiburg i.Br.	4	100	19.3	19.0	15.9	24.4	37.2	24.2
U Bonn	5–8	101–150	16.0	19.9	14.7	19.9	40.7	24.2
U Frankfurt a.M.	5–8	101–150	31.6	0.0	19.1	20.7	38.4	24.1
U Göttingen	5–8	101–150	28.3	15.0	16.2	18.5	39.3	24.1
U Münster	5–8	101–150	20.0	13.4	12.2	15.9	35.2	20.6
U Hamburg	9–14	151–200	12.0	0.0	17.7	16.4	37.0	20.6
U Kiel	9–14	151–200	10.7	13.4	10.2	14.4	31.7	18.1
U Cologne	9–14	151–200	0.0	11.6	7.2	18.1	36.6	19.7
U Mainz	9–14	151–200	0.0	7.7	17.7	14.9	36.0	19.9
U Tübingen	9–14	151–200	23.3	0.0	14.5	17.1	41.0	22.7
U Würzburg	9–14	151–200	20.0	0.0	23.6	15.6	34.9	21.6
TU Dresden	15–23	201–300	0.0	0.0	7.2	12.7	38.9	19.1
TH Aachen	15–23	201–300	0.0	0.0	10.2	7.1	40.7	19.5
TU Berlin	15–23	201–300	16.9	0.0	15.6	5.8	28.9	16.2
U Düsseldorf	15–23	201–300	12.0	0.0	12.1	10.8	31.5	16.7
U Erlangen-Nuremberg	15–23	201–300	0.0	0.0	14.5	15.7	39.6	20.6
U Karlsruhe	15–23	201–300	0.0	0.0	9.8	14.6	34.4	17.7
U Leipzig	15–23	201–300	12.0	13.4	0.0	8.5	33.3	17.4
U Marburg	15–23	201–300	10.7	0.0	14.5	13.8	39.1	16.6
U Stuttgart	15–23	201–300	19.3	0.0	10.2	13.4	27.2	15.9

Source: www.shanghairanking.com/ARWU2013.html

The indicators are based on the following data

- Alumni** Total number of alumni of an institution who have won Nobel Prizes and Fields Medals
Award Total number of staff of an institution who have won Nobel Prizes and Fields Medals
HiCi Number of highly cited researchers in 21 broad subject categories
N&S Number of papers published in Nature and Science between 2008 and 2012
PUB Total number of papers indexed in Science Citation Index-expanded and Social Science Citation Index
PCP Per capita academic performance of an institution

› The 20 German universities in the Leiden Ranking 2013 (sorted by "Number of Publications" indicator)

University	Indicator								
	Total number of publications (P)			Proportion of top 10% publications (P _{top 10%})			Proportion of international collaborative publications (P _{int.collab})		
	Total	National Rank	Rank world-wide	Percentage	National Rank	Rank world-wide	Percentage	National Rank	Rank world-wide
U Munich	6,896	1	64	12.6%	4	110	51.9%	9	88
U Heidelberg	6,359	2	78	11.5%	10	162	51.2%	10	100
TU Munich	5,408	3	117	13.6%	1	77	49.4%	16	125
FU Berlin	5,177	4	125	11.4%	11	167	48.6%	21	138
HU Berlin	4,955	5	136	11.4%	12	169	49.8%	15	120
U Erlangen-Nuremberg	4,484	6	159	10.8%	19	208	48.5%	22	139
U Tübingen	4,348	7	167	10.8%	17	201	50.6%	13	106
U Bonn	4,152	8	176	11.7%	8	153	55.4%	3	46
U Göttingen	4,131	9	179	10.4%	23	234	49.0%	18	129
U Freiburg i.Br.	4,123	10	181	12.2%	5	122	53.6%	4	65
TH Aachen	4,070	11	186	10.7%	20	220	47.4%	27	155
U Münster	3,987	12	193	11.9%	7	144	47.0%	29	163
Karlsruhe Institute of Technology (KIT)	3,941	13	196	11.1%	15	183	57.1%	1	32
U Frankfurt a.M.	3,869	14	201	12.1%	6	126	50.8%	12	105
U Hamburg	3,675	15	214	10.9%	16	196	53.4%	6	70
TU Dresden	3,463	16	226	10.4%	24	236	49.9%	14	117
U Bochum	3,423	17	231	9.0%	34	327	47.2%	28	159
U Jena	3,239	18	252	10.0%	25	260	45.5%	33	190
U Mainz	3,235	19	253	11.3%	13	173	53.4%	5	69
U Würzburg	3,124	20	264	13.2%	2	93	49.0%	17	128

Source: www.leidenranking.com

The Leiden Ranking 2013 is based on data collected from 2008 to 2011.

- P:** absolute number of publications
PP_{top 10%}: Proportion of the publications of a university that, compared with other publications in the same field and in the same year, belong to the top 10% most frequently cited.
PP_{int.collab}: Proportion of the publications of a university that have been co-authored by two or more countries.

› The 20 German universities in the QS World University Ranking 2013 by subject groups

University	National Rank	Rank world-wide	Differentiated by subject groups				
			Humanities and Social Sciences	Natural Sciences	Engineering Sciences	Social Sciences/ Management	Life Sciences
U Heidelberg	1	50	36	39	214	144	29
TU Munich	2	53	-	15	17	245	83
U Munich	3	65	30	18	110	68	34
U Freiburg i.Br.	4	102	49	113	225	227	80
FU Berlin	5	109	28	106	236	96	188
Karlsruhe Institute of Technology (KIT)	6	116	348	34	33	378	361
HU Berlin	7	126	22	87	184	90	123
U Göttingen	8	128	123	90	385	280	118
U Tübingen	9	134	52	173	-	297	74
TH Aachen	10	147	202	47	28	325	229
U Bonn	11	163	173	91	358	178	145
TU Berlin	12	183	289	118	41	280	-
U Hamburg	13	186	98	114	261	188	136
U Frankfurt a.M.	14	208	148	212	338	150	119
U Münster	15	236	160	122	336	204	153
U Cologne	16	243	136	198	-	140	145
U Stuttgart	17	248	338	155	85	-	-
U Ulm	18	258	-	318	394	-	304
TU Darmstadt	19	260	365	173	65	-	-
TU Dresden	20	262	362	154	77	-	195

Source: QS World University Rankings (www.topuniversities.com/university-rankings)

› The 20 German universities with the most research stays funded by the AvH Foundation in the Humboldt Rankings 2012

University	Absolute rankings	Weighted rankings	Total number of guest researchers	Fellows			Award winners			Weighting factor
				Total	Female		Total	Female		
					N	in %		N	in %	
FU Berlin	1	1	286	241	80	33.2	45	4	8.9	140.2
U Munich	2	3	276	226	63	27.9	50	5	10.0	77.3
HU Berlin	3	2	263	218	55	25.2	45	6	13.3	109.1
U Heidelberg	4	6	191	152	33	21.7	39	2	5.1	59.0
U Bonn	5	4	188	162	43	26.5	26	0	0.0	65.3
TU Munich	6	5	174	129	23	17.8	45	2	4.4	59.8
U Freiburg i.Br.	7	7	158	136	30	22.1	22	0	0.0	58.7
U Göttingen	8	9	140	117	26	22.2	23	1	4.3	55.3
TU Berlin	9	8	124	94	16	17.0	30	2	6.7	57.1
U Cologne	10	15	123	103	29	28.2	20	3	15.0	46.1
U Münster	10	22	123	99	21	21.2	24	2	8.3	41.4
TH Aachen	12	14	121	105	19	18.1	16	2	12.5	46.9
U Frankfurt a.M.	13	21	112	90	25	27.8	22	1	4.5	42.4
U Bochum	14	17	111	88	18	20.5	23	0	0.0	44.4
U Erlangen-Nuremberg	14	23	111	91	19	20.9	20	1	5.0	39.8
Karlsruhe Institute of Technology (KIT)	16	20	110	85	17	20.0	25	0	0.0	43.1
U Tübingen	17	30	99	90	17	18.9	9	0	0.0	31.1
U Hamburg	18	27	93	81	24	29.6	12	0	0.0	32.6
U Würzburg	19	16	92	77	16	20.8	15	1	6.7	45.1
TU Darmstadt	20	12	85	68	7	10.3	17	1	5.9	49.1

Source: www.humboldt-foundation.de/web/humboldt-ranking-2012.html

Absolute rankings: rankings based on the number of guest researchers from 2007 to 2011

Weighted Rankings: weighting based on the number of guest researchers in relation to the number of professors per institution

Weighting factor: guest researchers per 100 C4/W3 professors

› The 20 German universities with the highest DFG funding volume – The DFG Funding Atlas 2012

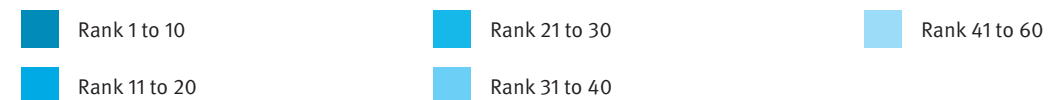
Higher Education Institution	Funding Atlas 2012 (Awarding period 2008–2010)		Funding Ranking 2009 (Awarding period 2005–2007)		Funding Ranking 2006 (Awarding period 2002–2004)		Funding Ranking 2003 (Awarding period 1999–2001)	
	Rank	€ m	Rank	€ m	Rank	€ m	Rank	€ m
TH Aachen	1	278.1	1	257.0	2	126.2	1	119.2
U Munich	2	263.7	2	249.0	1	130.8	2	116.9
FU Berlin	3	250.8	5	194.4	10	96.6	13	76.6
TU Munich	4	250.1	4	200.4	9	99.3	3	116.3
U Heidelberg	5	246.3	3	215.4	3	105.1	6	94.2
U Freiburg i.Br.	6	202.1	6	165.5	11	91.1	11	85.2
Karlsruhe Institute of Technology (KIT)	7	200.5	7	159.4	6	100.5	10	87.0
HU Berlin	8	179.8	10	153.4	5	101.5	9	90.1
U Göttingen	9	168.6	9	153.5	12	85.1	15	74.0
U Erlangen-Nuremberg	10	159.1	8	157.6	7	100.3	5	95.4
U Bonn	11	157.4	13	122.6	13	81.9	12	81.6
U Münster	12	149.4	15	119.9	15	73.5	19	69.0
TU Dresden	13	144.0	18	107.3	20	66.5	24	57.2
U Tübingen	14	140.9	14	120.4	8	99.7	4	100.2
U Würzburg	15	133.1	17	110.4	4	104.7	8	90.3
U Frankfurt a.M.	16	131.7	12	124.8	20	66.5	18	69.4
U Cologne	17	129.6	11	126.4	18	70.7	16	73.8
TU Darmstadt	18	126.2	20	106.1	25	53.8	25	53.5
U Konstanz	19	123.6	16	119.7	34	43.7	29	43.2
U Hamburg	20	117.6	21	98.7	17	72.1	14	74.1
Top 20 in total	3,552.4		3,069.9		1,827.2		1,746.9	
HEIs in total	5,927.9		5,076.7		3,241.1		3,095.4	

Source: German Research Foundation - Funding Atlas 2012, Funding Atlas 2009, Funding Ranking 2003, 2006 und 2009

› The 20 German universities with the highest DFG funding volume in the DFG Funding Atlas 2012 by scientific discipline

Higher Education Institution	DFG awards in total		DFG awards in							
			Humanities and Social Sciences		Life Sciences		Natural Sciences		Engineering Sciences	
	Rank	€ m	Rank	€ m	Rank	€ m	Rank	€ m	Rank	€ m
TH Aachen	1	278.1	46	3.4	25	35.5	23	28.4	1	160.6
U Munich	2	263.7	7	37.4	1	113.7	3	62.1	46	3.5
FU Berlin	3	250.8	1	94.6	7	84.5	10	42.2	47	3.4
TU Munich	4	250.1	48	3.3	10	74.1	2	62.9	4	74.0
U Heidelberg	5	246.3	5	40.5	3	107.9	5	45.4	31	8.8
U Freiburg i.Br.	6	202.1	18	14.2	2	107.9	30	20.5	18	20.5
Karlsruhe Institute of Technology (KIT)	7	200.5	43	3.5	38	12.0	8	43.0	3	83.6
HU Berlin	8	179.8	2	55.7	5	87.0	17	32.9	44	4.2
U Göttingen	9	168.6	16	18.4	9	79.0	16	34.4	49	2.8
U Erlangen-Nuremberg	10	159.1	33	7.6	14	55.2	13	37.6	8	58.6
U Bonn	11	157.4	11	22.9	13	60.4	1	68.0	37	6.1
U Münster	12	149.4	3	50.2	15	54.2	12	40.6	42	4.5
TU Dresden	13	144.0	27	11.6	16	53.5	31	20.2	7	58.7
U Tübingen	14	140.9	8	31.4	8	81.2	29	21.0	35	7.3
U Würzburg	15	133.1	31	9.9	4	96.5	25	23.7	47	3.0
U Frankfurt a.M.	16	131.7	6	37.7	12	61.6	20	30.3	57	2.1
U Cologne	17	129.6	14	20.6	11	72.2	15	34.5	54	2.2
TU Darmstadt	18	126.2	34	7.3	48	4.7	22	29.6	2	84.6
U Konstanz	19	123.6	4	41.1	34	18.4	35	14.7	39	5.6
U Hamburg	20	117.6	10	23.7	23	37.4	4	51.4	41	5.1
HEIs in total	5,927.9		893.5		2,015.6		1,363.6		1,277.2	

Source: German Research Foundation (DFG): DFG Funding Atlas 2012



› DFG funding volume by HEI and selected funding programmes in

Higher Education Institution	Total		Individual grants		Collaborative Research Centres	
	Rank	€ m	Rank	€ m	Rank	€ m
TH Aachen	1	278.1	3	69.2	4	54.9
U Munich	2	263.7	2	69.7	3	61.2
FU Berlin	3	250.8	7	59.1	1	70.4
TU Munich	4	250.1	1	82.1	6	50.3
U Heidelberg	5	246.3	5	61.7	7	49.9
U Freiburg i.Br.	6	202.1	4	65.8	13	38.9
Karlsruhe Institute of Technology (KIT)	7	200.5	18	43.2	17	36.2
HU Berlin	8	179.8	13	48.0	2	67.6
U Göttingen	9	168.6	10	54.4	31	19.7
U Erlangen-Nuremberg	10	159.1	8	58.8	15	37.3
U Bonn	11	157.4	14	47.0	5	52.8
U Münster	12	149.4	9	57.0	9	43.4
TU Dresden	13	144.0	11	53.4	14	38.8
U Tübingen	14	140.9	6	59.5	16	37.0
U Würzburg	15	133.1	24	36.2	8	44.7
U Frankfurt a.M.	16	131.7	15	45.9	29	20.5
U Cologne	17	129.6	12	51.0	10	42.1
TU Darmstadt	18	126.2	17	43.9	22	30.2
U Konstanz	19	123.6	38	21.8	37	17.1
U Hamburg	20	117.6	16	44.7	24	27.9
HEIs in total		5,927.9		2,016.7		1,483.8
Number of reported HEIs	186		169		72	

DFG Funding Atlas 2012

Clusters of Excellence		Priority Programmes		Research Training Groups		Research Units	
Rank	€ m	Rank	€ m	Rank	€ m	Rank	€ m
1	64.8	1	16.9	5	11.9	24	6.6
4	47.3	3	14.8	10	10.0	7	10.2
5	45.2	12	9.1	9	10.1	2	15.3
2	51.2	7	13.1	26	5.9	21	7.2
3	47.8	13	9.1	3	13.7	8	10.1
13	22.1	19	7.7	1	16.2	14	8.6
26	5.0	2	15.7	7	10.8	18	7.8
19	20.1	33	5.7	4	13.4	6	11.1
29	3.9	20	7.6	2	15.6	1	15.3
8	24.4	4	14.4	16	8.1	5	12.1
10	23.1	9	10.1	34	4.8	3	13.8
7	26.1	17	8.0	11	9.2	31	5.7
27	4.7	6	13.8	43	3.1	38	3.6
14	21.7	23	7.4	18	7.0	16	8.2
-	-	21	7.6	6	11.4	10	9.6
6	42.9	28	6.8	20	6.8	13	8.9
17	20.5	26	7.2	44	3.0	36	3.8
11	23.0	8	10.4	8	10.7	34	4.6
12	23.0	38	4.7	24	6.2	37	3.7
18	20.1	30	6.2	13	8.9	9	9.6
	694.6		409.1		358.6		342.5
37		93		84		81	

Source: German Research Foundation (DFG): DFG Funding Atlas 2012

D. Habilitations

› The 20 German universities with the highest number of habilitations in

Higher Education Institution	Habilitations 2012 in total	Female		Subject group		
		N	in %	Linguistics and Cultural Studies	Sports Science	Law, Economics and Social Sciences
U Munich	109	36	33.0	21	-	9
U Heidelberg	91	33	36.3	15	-	5
U Tübingen	66	16	24.2	7	1	3
U Erlangen-Nuremberg	62	16	25.8	9	1	5
Charité Berlin	58	17	29.3	-	-	-
U Freiburg i.Br.	57	9	15.8	10	-	3
TU Munich	55	11	20.0	-	-	3
U Hamburg	55	15	27.3	5	-	9
U Frankfurt a.M.	51	15	29.4	11	1	8
U Bonn	49	14	28.6	11	-	2
U Münster	49	8	16.3	10	-	6
U Regensburg	44	13	29.5	8	-	4
U Cologne	43	6	14.0	4	-	3
U Göttingen	40	8	20.0	5	-	1
TU Dresden	35	8	22.9	3	-	3
U Leipzig	34	9	26.5	3	-	1
U Jena	33	6	18.2	6	1	6
Hannover Medical School	32	11	34.4	-	-	-
U Kiel	30	12	40.0	3	-	-
TH Aachen	28	15	53.6	3	-	-
Top 20 in total	1,021	278	27.2	134	4	71
Universities in total	1,646	444	27.0	288	8	126

the year 2012

Mathematics, Natural Sciences	Medicine/ Health Studies	Veterinary Medicine	Agricultural Science, Nutritional Sciences	Engineering	Art, Art Studies	Habilitations 2011 in total
						Subject group
18	58	2	-	-	1	104
14	57	-	-	-	-	78
15	40	-	-	-	-	55
7	35	-	-	3	2	44
-	-	-	-	-	-	64
7	34	-	2	-	1	52
12	29	1	6	4	-	56
5	33	-	-	-	3	51
7	22	-	-	-	2	41
5	29	-	2	-	-	39
3	30	-	-	-	-	35
4	28	-	-	-	-	38
5	31	-	-	-	-	35
7	24	-	3	-	-	34
7	14	-	4	4	-	33
-	29	1	-	-	-	28
7	13	-	-	-	-	32
-	-	-	-	-	-	34
2	23	-	2	-	-	29
2	20	-	-	3	-	38
127	549	4	19	14	9	920
259	847	18	29	58	13	1,563

Source: German Federal Statistics Office, subject series 11 (Statistisches Bundesamt, Fachserie 11)

› Habilitations by department from 2005–2013

Department	2005	2006	2007	2008	2009	2010	2011	2012	2013
DEP 01 Protestant Theology	3	3	3	1	2	2	0	0	1
DEP 02 Roman Catholic Theology	3	2	1	4	3	1	2	2	0
DEP 03 Law	2	0	1	3	2	1	1	2	1
DEP 04 Economics	2	1	2	1	1	4	1	2	1
DEP 05 Medicine	28	35	31	27	25	21	22	30	16
DEP 06 Education and Social Studies	5	2	3	2	0	1	1	3	1
DEP 07 Psychology and Sport Studies	3	4	5	3	1	1	1	1	4
DEP 08 History and Philosophy	2	6	1	6	3	3	2	3	2
DEP 09 Philologies	2	4	2	2	2	0	2	3	0
DEP 10 Mathematics and Computer Sciences	3	2	1	3	3	3	2	1	3
DEP 11 Physics	3	1	2	1	0	0	1	0	1
DEP 12 Chemistry and Pharmacy	0	1	4	0	0	0	0	0	3
DEP 13 Biology	1	0	0	0	1	2	0	0	2
DEP 14 Geosciences	0	3	1	1	1	0	0	2	1
WWU in total	57	64	57	54	44	39	35	49	36
Habilitations by women	10	12	12	13	12	3	6	8	12
Percentage (%)	17.5	18.8	21.1	24.1	27.3	7.7	17.1	16.3	33.3

E. Doctoral Degrees

› The 20 German universities with the highest number of doctoral degrees taken in the academic year 2012

Higher Education Institution	Doctoral degrees			
	N	% of total	Female	
			N	%
U Munich	1,194	4.5	681	57.0
U Heidelberg	1,152	4.3	594	51.6
TU Munich	887	3.3	308	34.7
U Hamburg	883	3.3	457	51.8
TH Aachen	783	2.9	257	32.8
U Tübingen	777	2.9	424	54.6
U Göttingen	738	2.8	357	48.4
U Freiburg i.Br.	737	2.8	351	47.6
U Münster	734	2.8	338	46.0
U Erlangen-Nuremberg	687	2.6	298	43.4

Continued ›

Higher Education Institution	Doctoral degrees			
	N	% of total	Female	
			N	%
FU Berlin	685	2.6	367	53.6
TU Dresden	672	2.5	307	45.7
U Bonn	668	2.5	321	48.1
U Mainz	641	2.4	341	53.2
U Frankfurt a.M.	614	2.3	309	50.3
U Cologne	599	2.3	285	47.6
U Jena	549	2.1	288	52.5
Charité Berlin	497	1.9	311	62.6
HU Berlin	483	1.8	228	47.2
TU Berlin	477	1.8	153	32.1
Top 20 in total	14,457	54.4	6,975	48.2
HEI in total	26,553	100.0	12,043	45.4

Source: German Federal Statistics Office, subject series 11 (Statistisches Bundesamt, Fachserie 11)

› Doctoral degrees by subject groups in comparison with all universities in NRW (excluding medicine)

Higher Education Institution	Doctoral degrees (average of the years 2009–2011)				%
	Humanities and Social Sciences	Natural Sciences	Engineering	Doctoral degrees in total	
TH Aachen	50	202	277	529	14.80
U Münster	239	248	0	487	13.63
U Cologne	265	195	0	460	12.86
U Bonn	174	272	7	452	12.65
U Bochum	134	135	92	361	10.09
U Dortmund	73	94	76	243	6.80
U Düsseldorf	98	145	0	243	6.79
U Duisburg-Essen	68	112	47	227	6.36
U Bielefeld	88	97	0	185	5.18
U Paderborn	43	50	30	122	3.42
U Wuppertal	34	32	29	95	2.66
U Siegen	43	19	22	85	2.38
FeU Hagen	49	5	5	59	1.64
DSH Cologne	27	0	0	27	0.75
Total	1,384	1,606	585	3,575	100.00

Source: MIWF NRW – Department 213

› Doctoral degrees taken in the main subject in the academic years 2005–2012 by department/subject

Department/Subject	2005	2006	2007	2008	2009	2010	2011	2012
DEP 01 Protestant Theology	10	9	2	8	4	6	5	2
DEP 02 Roman Catholic Theology	13	10	17	13	0	12	7	3
DEP 03 Law	99	98	89	105	98	88	82	71
Business Administration	33	29	28	36	43	27	25	44
Economics	8	14	11	10	15	9	7	15
Information Systems	7	12	9	12	7	3	12	7
DEP 04 Economics	48	55	48	58	65	39	44	66
Medicine	216	235	209	209	170	207	199	188
Dentistry	49	55	72	60	57	51	54	54
DEP 05 Medicine	265	290	281	269	227	258	253	242
Communication Studies	4	6	4	6	6	5	9	12
Education	10	15	7	9	12	14	12	7
Political Sciences	12	10	13	14	12	19	22	23
Sociology	9	8	10	4	6	4	2	7
DEP 06 Education and Social Studies	35	39	34	33	36	37	45	49
Psychology	7	4	9	25	10	15	8	17
Sport Studies	2	2	3	4	1	0	2	4
DEP 07 Psychology and Sport Studies	9	6	12	29	11	15	10	21
Archaeology	0	0	2	2	2	2	1	1
Byzantine Studies	0	0	0	0	0	0	1	0
Ethnology	1	2	0	1	0	2	1	2
History	18	12	17	8	14	15	15	12
Classical Philology	1	1	2	2	0	0	2	0
Art History	5	7	3	2	4	4	1	5
Medieval Latin Philology	1	1	1	0	1	1	3	0
Music Department	1	3	2	0	0	0	0	0
Musicology	1	2	2	3	2	2	1	1
Philosophy	2	4	4	2	3	4	2	8
Textile Design	0	2	0	0	0	0	0	0
Prehistory and Early History	0	0	3	8	2	1	1	1
Folklore and European Ethnology	5	1	0	2	1	0	1	1
DEP 08 History and Philosophy	35	35	36	30	29	31	29	31

Continued ›

Department/Subject	2005	2006	2007	2008	2009	2010	2011	2012
Egyptology/Coptology	1	2	1	0	1	0	1	0
General Linguistics	4	0	1	0	1	0	0	1
English Philology	3	1	4	4	2	2	2	3
German Philology/Old and New German Literature	6	15	10	7	7	7	7	3
Indo-Germanic Linguistics	0	0	0	0	0	0	0	0
Indian Studies	0	0	0	0	0	0	0	0
Arabic and Islamic Studies	0	0	0	0	2	0	0	1
Dutch Philology	1	1	2	0	1	1	1	0
Ancient Oriental Studies	1	2	0	1	1	0	1	1
Romance Language and Literature	1	2	1	1	2	1	3	1
Sinology	2	0	0	0	0	1	1	1
Scandinavian Studies	0	0	0	1	0	0	0	0
Slavonic Studies	0	0	0	0	0	1	0	0
DEP 09 Philologies	19	23	19	14	17	13	16	11
DEP 10 Mathematics and Computer Sciences	19	11	22	17	10	29	25	13
Geophysics	1	4	6	0	0	0	0	0
Physics	11	15	16	16	23	31	21	26
DEP 11 Physics	12	19	22	16	23	31	21	26
Chemistry	73	72	49	70	82	80	65	74
Food Chemistry	3	3	5	3	0	20	3	12
Pharmacy	10	25	19	9	0	16	15	14
DEP 12 Chemistry and Pharmacy	86	100	73	82	82	116	83	100
DEP 13 Biology	54	50	43	48	66	81	66	84
Geography	3	7	5	6	17	11	7	9
Geology	0	7	7	1	3	8	1	3
Mineralogy	0	6	1	3	3	8	2	3
Planetology	0	0	0	2	3	1	0	0
DEP 14 Geosciences	3	20	13	12	26	28	10	15
Religious Studies	0	0	0	0	0	2	0	0
WWU in total	707	765	711	734^r	694^r	791	696	734
Doctoral degrees taken by female students	262	340	301	330	303	353	323	338
Percentage (%)	37.1	44.4	42.3	45.0	43.7	44.6	46.4	46.0
Doctoral degrees taken by foreign students	73	82	65	71	67	79	50	73
Percentage (%)	10.3	10.7	9.1	9.7	9.7	10.0	7.2	9.9
WWU in total (excluding medicine)	442	475	430	465^r	467^r	533	443	492
Doctoral degrees taken by female students	141	194	170	191	182	219	183	195
Percentage (%)	31.9	40.8	39.5	41.1	39.0	41.1	41.3	39.6
Doctoral degrees taken by foreign students	60	70	59	53	60	70	39	60
Percentage (%)	13.6	14.7	13.7	11.4	12.8	13.1	8.8	12.2

r Internal correction based on 157 late registrations for the summer semester 2008 to the IT.NRW

Source: Internal statistics of the WWU based on official examination statistics



A. Number of Students

› The 20 German universities with the highest number of students in the winter semester 2012/13

Higher Education Institution	Students								
	Total			German students			Foreign students		
	Total	in their 1st ... semester		Total	in their 1st ... semester		Total	in their 1st ... semester	
		university*	subject*		university*	subject*		university*	subject*
FeU Hagen	76,827	4,886	14,594	69,591	3,795	12,952	7,236	1,091	1,642
U Cologne	50,499	5,779	10,501	45,124	4,735	9,191	5,375	1,044	1,310
U Munich	46,160	7,555	12,135	39,698	5,834	9,939	6,462	1,721	2,196
U Frankfurt a.M.	42,112	5,165	8,534	35,579	4,110	7,070	6,533	1,055	1,464
U Hamburg	40,475	5,574	8,900	35,642	4,514	7,619	4,833	1,060	1,281
U Münster	40,048	5,307	8,967	37,003	4,594	8,124	3,045	713	843
U Duisburg-Essen	39,369	6,294	8,861	33,184	5,025	7,309	6,185	1,269	1,552
U Bochum	38,719	4,636	7,546	33,729	3,715	6,277	4,990	921	1,269
TH Aachen	37,959	6,069	8,944	32,073	4,687	7,268	5,886	1,382	1,676
U Mainz	37,039	4,198	6,002	33,062	3,388	5,281	3,977	810	721
TU Dresden	34,790	5,636	9,395	31,036	4,506	8,095	3,754	1,130	1,300
U Erlangen-Nuremberg	34,077	6,030	8,934	31,343	5,259	7,986	2,734	771	948
FU Berlin	33,330	5,331	9,395	26,977	3,274	6,912	6,353	2,057	2,483
TU Munich	32,316	6,244	9,967	26,475	4,146	7,493	5,841	2,098	2,474
Baden Wuerttemberg Cooperative State University (FH)	31,240	11,787	12,651	30,409	11,429	12,276	831	358	375
TU Berlin	31,111	4,137	7,217	25,354	2,950	5,735	5,757	1,187	1,482
U Bonn	30,367	4,913	8,027	26,468	3,944	6,831	3,899	969	1,196
HU Berlin	30,036	4,734	7,258	25,066	3,040	6,296	4,970	1,694	962
U Heidelberg	29,800	4,630	6,264	24,829	3,353	5,387	4,971	1,277	877
U Dortmund	29,227	4,762	7,358	26,235	4,111	6,637	2,992	651	721
Top 20 in total	765,501	113,667	181,450	668,877	90,409	154,678	96,624	23,258	26,772
Universities in total	1,611,664	250,525	398,041	1,419,043	200,873	341,531	192,621	49,652	56,510
HEIs in total	2,499,409	427,825	627,290	2,217,208	355,426	547,247	282,201	72,399	80,043

Source: German Federal Statistics Office, subject series 11 (Statistisches Bundesamt, Fachserie 11), winter semester 2012/13

› Female students at the 20 German universities with the highest number of students in the winter semester 2012/13

Higher Education Institution	Students								
	Total			German students			Foreign students		
	Total	in their 1st ... semester		Total	in their 1st ... semester		Total	in their 1st ... semester	
		university*	subject*		university*	subject*		university*	subject*
FeU Hagen	36,213	2,791	7,400	32,330	2,141	6,440	3,883	650	960
U Cologne	28,977	3,630	6,333	25,551	2,930	5,472	3,426	700	861
U Munich	28,328	4,756	7,345	24,091	3,679	5,944	4,237	1,077	1,401
U Frankfurt a.M.	24,698	3,152	5,031	20,548	2,460	4,102	4,150	692	929
U Hamburg	22,542	3,146	5,033	19,506	2,470	4,225	3,036	676	808
U Münster	21,312	3,106	5,157	19,548	2,663	4,633	1,764	443	524
U Duisburg-Essen	19,702	3,186	4,391	16,861	2,598	3,658	2,841	588	733
U Bochum	18,440	2,297	3,703	15,892	1,782	3,027	2,548	515	676
TH Aachen	11,778	2,005	3,026	9,771	1,516	2,419	2,007	489	607
U Mainz	21,766	2,703	3,774	19,133	2,153	3,291	2,633	550	483
TU Dresden	14,606	2,458	4,155	12,908	1,921	3,505	1,698	537	650
U Erlangen-Nuremberg	16,854	3,051	4,446	15,372	2,631	3,933	1,482	420	513
FU Berlin	19,506	3,288	5,757	15,565	1,977	4,192	3,941	1,311	1,565
TU Munich	10,605	2,048	3,359	8,577	1,309	2,473	2,028	739	886
Baden Wuerttemberg Cooperative State University (FH)	13,379	4,983	5,326	12,971	4,799	5,138	408	184	188
TU Berlin	9,915	1,389	2,551	7,726	917	1,962	2,189	472	589
U Bonn	16,312	2,805	4,541	14,146	2,252	3,848	2,166	553	693
HU Berlin	17,206	2,809	4,318	14,012	1,718	3,675	3,194	1,091	643
U Heidelberg	16,565	2,591	3,390	13,499	1,836	2,874	3,066	755	516
U Dortmund	13,651	2,252	3,594	12,363	1,959	3,283	1,288	293	311
Top 20 in total	382,355	58,446	92,630	330,370	45,711	78,094	51,985	12,735	14,536
Universities in total	812,885	131,645	206,778	712,528	104,750	176,442	100,357	26,895	30,336
HEIs in total	1,185,392	210,736	306,088	1,045,314	173,052	264,831	140,078	37,684	41,257

* See definitions: university semester, subject semester

Source: German Federal Statistics Office, subject series 11 (Statistisches Bundesamt, Fachserie 11), winter semester 2012/13

› Development in the number of students, with a breakdown of figures,

Reporting period academic year (summer + winter semester)	Starting point (previous winter semester)	Developments in the reporting period					
		New enrolments (First-time enrolments + students transferring from another university = inflow)			Students transferring from another university		
		N	Change compared to previous year		N	Change compared to previous year	
			Absolute number	in %		Absolute number	in %
1982/83	40,800	8,703	372	4.5	2,719	153	6.0
1983/84	42,802	8,578	-125	-1.4	2,690	-29	-1.1
1984/85	44,238	8,018	-560	-6.5	2,899	209	7.8
1985/86	44,449	7,911	-107	-1.3	2,985	86	3.0
1986/87	44,449	7,664	-247	-3.1	2,746	-239	-8.0
1987/88	43,940	8,186	522	6.8	2,630	-116	-4.2
1988/89	44,477	8,354	168	2.1	2,639	9	0.3
1989/90	45,151	7,814	-540	-6.5	2,375	-264	-10.0
1990/91	44,225	8,305	491	6.3	2,250	-125	-5.3
1991/92	44,511	8,279	-26	-0.3	2,202	-48	-2.1
1992/93	44,960	7,534	-745	-9.0	2,097	-105	-4.8
1993/94	44,776	7,370	-164	-2.2	2,073	-24	-1.1
1994/95	44,432	7,512	142	1.9	2,167	94	4.5
1995/96	44,641	7,643	131	1.7	2,256	89	4.1
1996/97	44,928	7,895	252	3.3	2,234	-22	-1.0
1997/98	45,163	7,761	-134	-1.7	2,314	80	3.6
1998/99	45,647	7,504	-257	-3.3	2,311	-3	-0.1
1999/00	45,199	7,611	107	1.4	2,301	-10	-0.4
2000/01	44,688	7,694	83	1.1	2,256	-45	-2.0
2001/02	43,860	8,387	693	9.0	2,362	106	4.7
2002/03	43,822	8,396	9	0.1	2,302	-60	-2.5
2003/04	43,800	8,586	190	2.3	2,432	130	5.6
2004/05	43,478	7,858	-728	-8.5	1,933	-499	-20.5
2005/06	39,227	7,997	139	1.8	2,032	99	5.1
2006/07	39,822	7,925	-72	-0.9	1,916	-116	-5.7
2007/08	40,306	6,280	-1,645	-20.8	1,616	-300	-15.7
2008/09	38,170	6,274	-6	-0.1	1,612	-4	-0.2
2009/10	37,226	6,779	505	8.0	1,863	251	15.6
2010/11	36,763	7,750	971	14.3	2,320	457	24.5
2011/12	37,197	9,013	1,263	16.3	3,099	779	33.6
2012/13	39,028	8,724	-289	-3.2	2,740	-359	-11.6
2013/14	40,787	10,078	1,354	15.5	3,220	480	17.5

for each winter semester

Developments in the reporting period			Winter semester			
Deregistrations (= outflow)			Semester	Total	Change compared to previous year	
N	Change compared to previous year				Absolute number	in %
	Absolute number	in %				
6,701	191	2.9	1982/83	42,802	2,002	4.9
7,142	441	6.6	1983/84	44,238	1,436	3.4
7,807	665	9.3	1984/85	44,449	211	0.5
7,911	104	1.3	1985/86	44,449	0	0.0
8,173	262	3.3	1986/87	43,940	-509	-1.1
7,649	-524	-6.4	1987/88	44,477	537	1.2
7,680	31	0.4	1988/89	45,151	674	1.5
8,740	1,060	13.8	1989/90	44,225	-926	-2.1
8,019	-721	-8.2	1990/91	44,511	286	0.6
7,830	-189	-2.4	1991/92	44,960	449	1.0
7,718	-112	-1.4	1992/93	44,776	-184	-0.4
7,714	-4	-0.1	1993/94	44,432	-344	-0.8
7,303	-411	-5.3	1994/95	44,641	209	0.5
7,356	53	0.7	1995/96	44,928	287	0.6
7,660	304	4.1	1996/97	45,163	235	0.5
7,277	-383	-5.0	1997/98	45,647	484	1.1
7,952	675	9.3	1998/99	45,199	-448	-1.0
8,122	170	2.1	1999/00	44,688	-511	-1.1
8,522	400	4.9	2000/01	43,860	-828	-1.9
8,425	-97	-1.1	2001/02	43,822	-38	-0.1
8,418	-7	-0.1	2002/03	43,800	-22	-0.1
8,908	490	5.8	2003/04	43,478	-322	-0.7
12,312	3,404	38.2	2004/05	39,227	-4,251	-9.8
7,402	-4,910	-39.9	2005/06	39,822	595	1.5
7,441	39	0.5	2006/07	40,306	484	1.2
8,416	975	13.1	2007/08	38,170	-2,136	-5.3
7,218	-1,198	-14.2	2008/09	37,226	-944	-2.5
7,242	24	0.3	2009/10	36,763	-463	-1.2
7,316	74	1.0	2010/11	37,197	434	1.2
7,182	-134	-1.8	2011/12	39,028	1,831	4.9
6,965	-217	-3.0	2012/13	40,787	1,759	4.5
8,273	1,308	18.8	2013/14	42,592	1,805	4.4

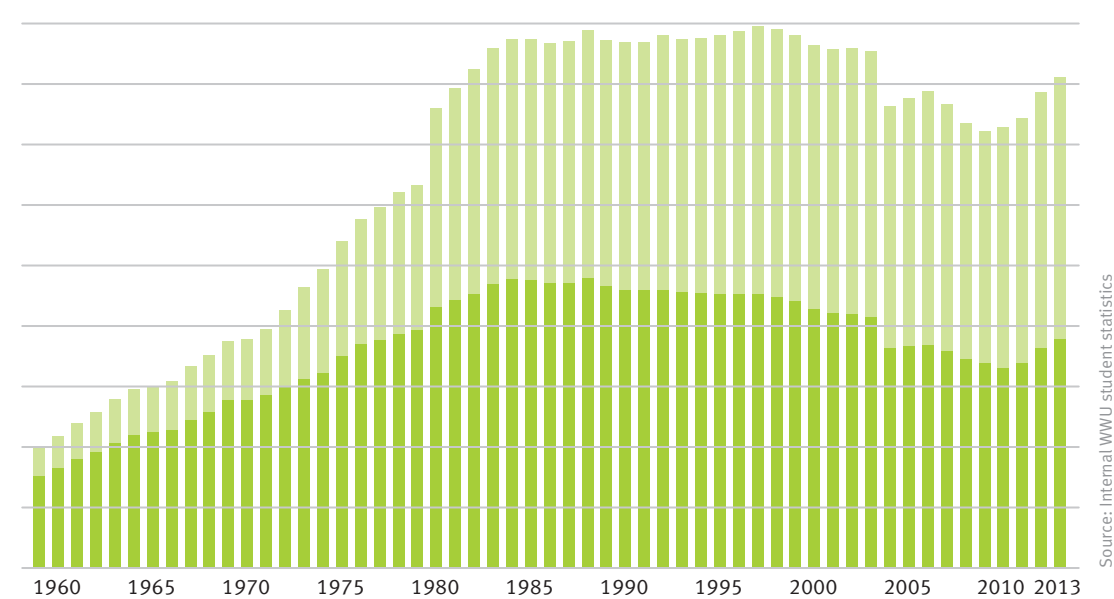
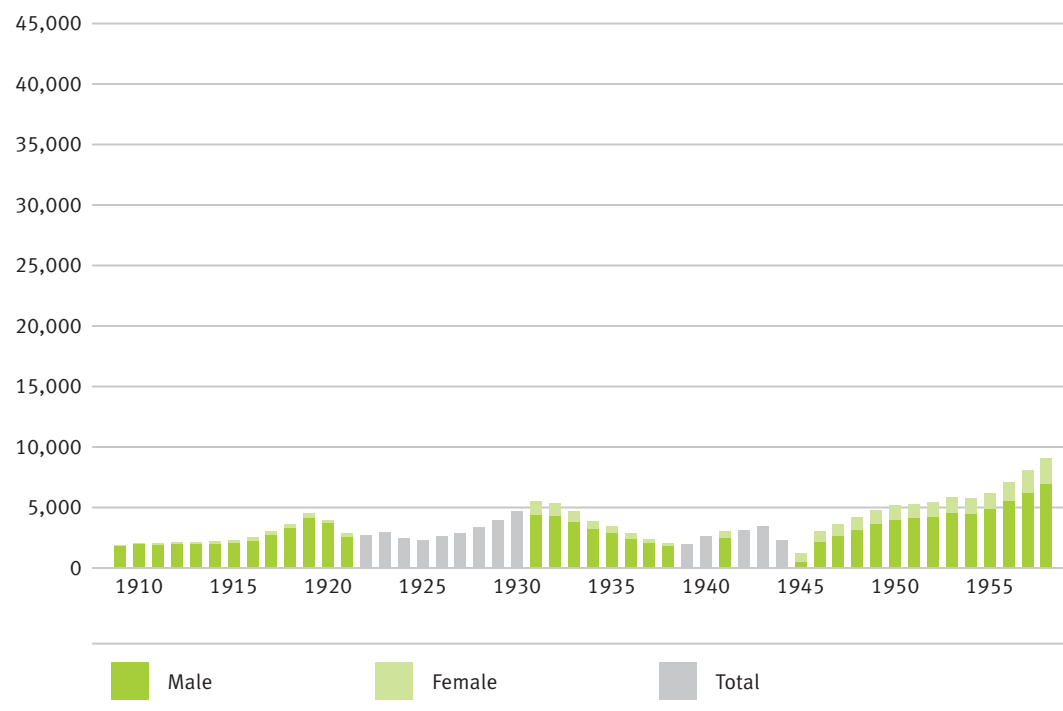
› WWU students by department in the winter semester 2013/14

Total	Students		
	Male	Female	Total
DEP 01 Protestant Theology	419	707	1,126
DEP 02 Roman Catholic Theology	823	1,001	1,824
DEP 03 Law	2,466	2,495	4,961
DEP 04 Economics	3,032	1,913	4,945
DEP 05 Medicine	1,242	1,803	3,045
DEP 06 Education and Social Studies	1,381	2,401	3,782
DEP 07 Psychology and Sport Studies	658	993	1,651
DEP 08 History and Philosophy	1,860	1,866	3,726
DEP 09 Philologies	1,595	4,308	5,903
DEP 10 Mathematics and Computer Sciences	1,607	954	2,561
DEP 11 Physics	1,372	782	2,154
DEP 12 Chemistry and Pharmacy	1,512	1,326	2,838
DEP 13 Biology	619	1,137	1,756
DEP 14 Geosciences	992	749	1,741
DEP 15 Music Department	123	175	298
Interdisciplinary Course of Studies	75	206	281
Total	19,776	22,816	42,592
Regular students only (excluding students currently on leave and foreign students attending German language programmes)	19,531	22,276	41,807

New enrolments			Foreign students		
Male	Female	Total	Male	Female	Total
56	96	152	10	10	20
88	96	184	33	19	52
345	391	736	124	155	279
790	623	1,413	195	255	450
110	155	265	153	157	310
205	497	702	123	300	423
113	221	334	24	62	86
297	358	655	85	138	223
336	1,148	1,484	165	427	592
346	195	541	83	49	132
408	305	713	55	46	101
297	230	527	129	103	232
117	254	371	67	120	187
191	182	373	54	55	109
30	43	73	66	109	175
11	40	51	7	25	32
3,740	4,834	8,574	1,373	2,030	3,403
3,713	4,787	8,500	1,311	1,862	3,173

Source: Internal WWU student statistics: winter semester 2013/14

› Number of students from 1910–2013 (average per year)



Source: Internal WWU student statistics

› WWU students* by target degree

* regular students only (excluding students currently on leave, guest students, cross-registered students from other universities and foreign students attending German language programmes)

Target degree	Winter semester								
	05/06	06/07	07/08	08/09	09/10	10/11	11/12	12/13	13/14
State examination	7,245	7,282	6,928	6,982	6,817	6,716	6,911	7,194	7,444
Ecclesiastical degree + Licentiate + Magister Theologiae	227	228	280	298	290	489	736	1,155	1,448
Diploma	10,304	9,442	7,224	5,542	4,309	2,938	1,899	1,264	766
Magister Artium (M.A.)	5,732	4,560	3,495	2,850	2,186	1,582	1,153	901	632
Bachelor (BA, BSc)	1,165	2,194	3,672	4,964	6,054	6,537	7,541	8,356	9,991
Bachelor with two equal subjects (without teaching degrees)*	217	645	825	989	1,099	1,386	1,679	1,905	2,601
Master (MA, MSc)	60	145	216	494	1,078	2,035	2,937	3,629	3,976
Master of Further Education**	,	,	,	,	46	134	161	162	162
PhD/MD (Doctoral degree)	4,238	4,294	4,381	4,413	4,487	4,805	4,906	4,870	4,651
others	482	495	601	893	1,173	983	942	873	869
Teaching degree for elementary schools: LA Primarstufe/ LA GHR, G/BA KJ (G)	2,118	2,048	1,762	1,461	1,059	1,049	1,049	1,051	1,040
Teaching degree for elementary, secondary and comprehensive schools: LA Sekundarstufe I/LA GHR, HRGe/BA KJ (HRGe)	1,342	1,422	1,361	1,235	1,101	1,153	1,161	1,188	1,204
Teaching degree for grammar/comprehensive schools: LA Sekundarstufe II/I/LA Gym/Ges/BA-2 HF	5,259	6,024	5,790	5,404	4,673	4,541	5,018	5,151	5,015
Master of Education for elementary school (MEd, G)	,	,	,	155	382	368	386	395	339
Master of Education for secondary school (MEd, HRGe)	,	,	,	61	197	209	237	281	256
Master of Education for secondary school (Med, GyGe/BAB/BK2F)	,	,	,	178	794	1,196	1,351	1,463	1,413
Teaching degrees in total	8,719	9,494	8,913	8,494	8,206	8,516	9,202	9,529	9,267
WWU in total	38,389	38,779	36,535	35,919	35,745	36,121	38,067	39,838	41,807

Source: Internal WWU student statistics: winter semester 2013/14

• No possibility of studying for this particular type of degree at WWU.

* Regarding the polyvalent Bachelor degrees with two subjects students are proportionately allocated a place in Educational and Non-Educational degree subjects. The distribution parameters are based on estimations (including figures until the summer semester 2013) and empirical data collected regarding the rate of transition from Bachelor to Master of Education subjects (since winter semester 2013/2014).

** Students taking a Master's degree in further education were included in the WWU student statistics for the first time in the winter semester 2009/10.

› Students at WWU by department/subject

Department/Subject	Winter semester								
	05/06	06/07	07/08	08/09	09/10	10/11	11/12	12/13	13/14
Protestant Theology	435	429	479	446	461	618	894	1,034	1,126
Jewish Studies	1	1	0	1	0	0	0	0	0
DEP 01 Protestant Theology	436	430	479	447	461	618	894	1,034	1,126
DEP 02 Roman Catholic Theology	802	779	855	841	851	1,008	1,344	1,606	1,781
DEP 03 Law	4,540	4,508	4,297	4,332	4,285	4,384	4,609	4,804	4,955
Household Economics	37	34	21	13	10	6	4	4	3
Information Systems	786	772	738	694	681	687	666	687	731
Business Administration/Economics	3,987	3,860	3,619	3,576	3,692	3,646	3,793	3,901	4,167
DEP 04 Economics	4,810	4,666	4,378	4,283	4,383	4,339	4,463	4,592	4,901
Medicine	2,195	2,200	2,171	2,157	2,113	2,121	2,195	2,251	2,278
Dentistry	719	728	713	717	731	748	741	763	767
DEP 05 Medicine	2,914	2,928	2,884	2,874	2,844	2,869	2,936	3,014	3,045
Communication Studies	940	945	901	897	769	678	632	619	688
Education	1,609	1,815	1,911	2,090	2,222	2,001	1,766	1,676	1,580
Social Sciences	2,201	2,101	1,904	1,760	1,621	1,507	1,485	1,512	1,551
of which Political Sciences	1,421	1,393	1,299	1,236	1,147	1,074	1,065	1,088	1,143
of which Sociology	561	509	440	385	354	330	309	306	292
of which Social Sciences (Teaching degree)	219	199	165	139	120	103	111	118	116
DEP 06 Education and Social Studies	4,750	4,861	4,716	4,747	4,612	4,186	3,883	3,807	3,819
Psychology	878	934	949	966	1,016	1,027	1,025	990	973
Sport Studies	828	820	784	728	724	740	717	705	678
DEP 07 Psychology and Sport Studies	1,706	1,754	1,733	1,694	1,740	1,767	1,742	1,695	1,651
Archaeology	153	123	108	111	113	109	122	118	117
Byzantine Studies	7	8	9	7	9	10	10	9	6
Ethnology	204	193	216	221	207	208	216	255	294
History	1,482	1,544	1,436	1,428	1,334	1,495	1,508	1,543	1,505
Classical Philology	228	269	272	285	298	334	356	430	416
Art History	426	407	361	356	334	404	372	361	335

Continued ›

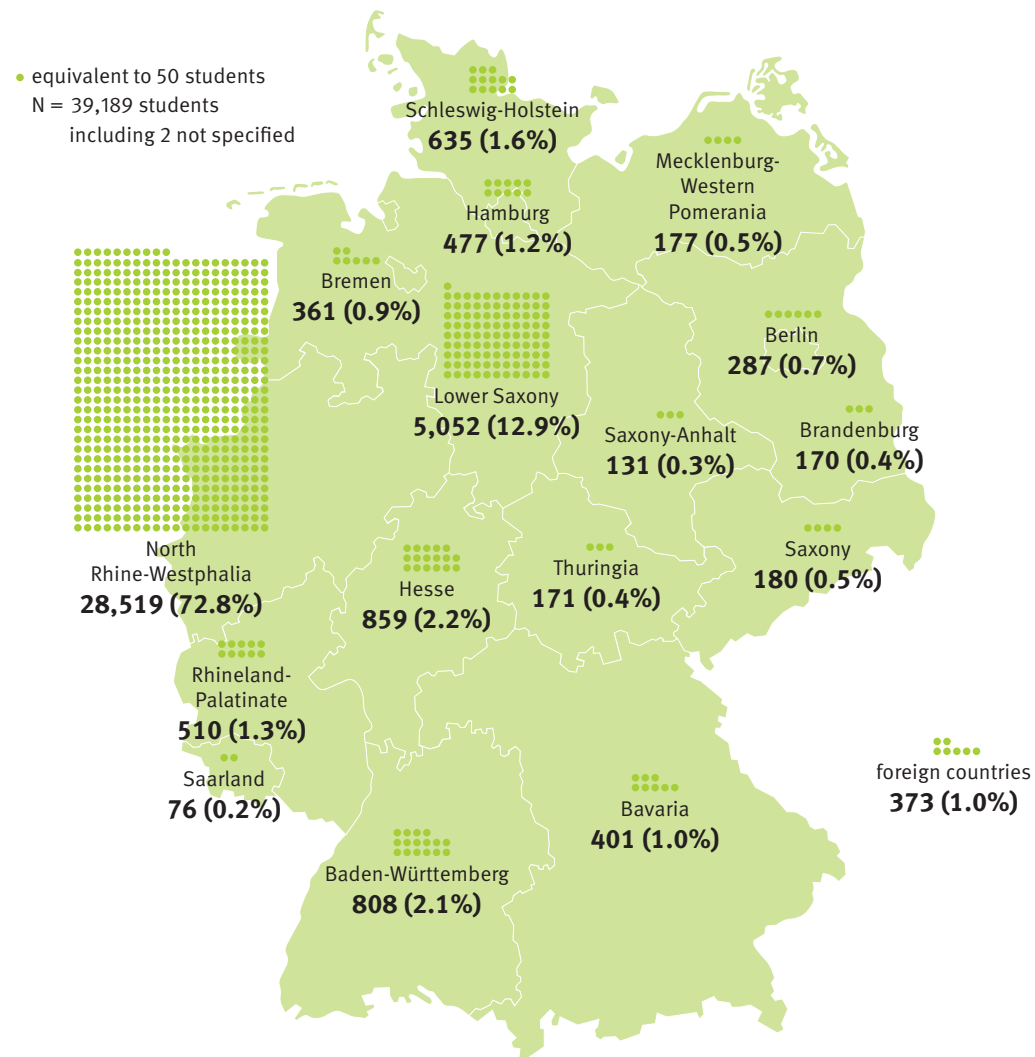
Department/Subject	Winter semester								
	05/06	06/07	07/08	08/09	09/10	10/11	11/12	12/13	13/14
Medieval Latin Philology	6	5	5	5	6	6	5	5	4
Music	138	115	128	132	156	170	174	163	203
Musicology	74	78	79	72	72	95	128	163	177
Philosophy	327	335	305	315	324	399	407	436	456
Textile Design	22	7	7	0	0	0	0	0	0
Prehistory and Early History	143	133	116	119	116	122	140	143	143
Folklore and European Ethnology	115	103	87	84	84	84	86	80	70
DEP 08 History and Philosophy	3,325	3,320	3,129	3,135	3,053	3,436	3,524	3,706	3,726
Egyptology/Coptology	117	76	55	42	32	31	27	26	21
General Linguistics	128	105	88	64	51	40	39	40	37
English Philology	1,372	1,428	1,271	1,168	1,086	1,045	1,056	1,065	1,086
Baltic Studies	9	8	5	1	1	1	1	0	0
German Philology/Old and New German Literature	3,743	3,996	3,611	3,171	2,736	2,547	2,553	2,608	2,684
Indo-Germanic Linguistics	25	16	13	11	8	7	5	6	5
Indian Studies	5	2	1	1	0	0	0	1	0
Arabic and Islamic Studies	111	129	126	138	139	156	209	223	199
Dutch Philology	111	109	112	108	130	138	134	151	167
Ancient Oriental Studies	27	23	37	40	50	52	85	117	148
Romance Language and Literature	664	748	685	716	738	734	733	769	798
Sinology	118	93	80	82	85	98	109	141	174
Scandinavian Studies	107	98	83	86	88	106	128	176	188
Slavonic Studies	61	45	38	29	40	51	64	53	41
DEP 09 Philologies	6,598	6,876	6,205	5,657	5,184	5,006	5,143	5,376	5,548
Computer Sciences	414	486	434	433	446	444	498	556	620
Mathematics	2,000	2,174	2,036	2,023	1,974	1,962	1,938	1,971	1,941
DEP 10 Mathematics and Computer Sciences	2,414	2,660	2,470	2,456	2,420	2,406	2,436	2,527	2,561
Astronomy	1	1	1	1	1	1	1	1	1
Geophysics	104	132	97	80	120	119	205	313	435
Physics	883	910	860	789	812	831	1,086	1,289	1,697
Technology	32	39	42	37	45	35	30	24	11
DEP 11 Physics	1,020	1,082	1,000	907	978	986	1,322	1,627	2,144

Continued >

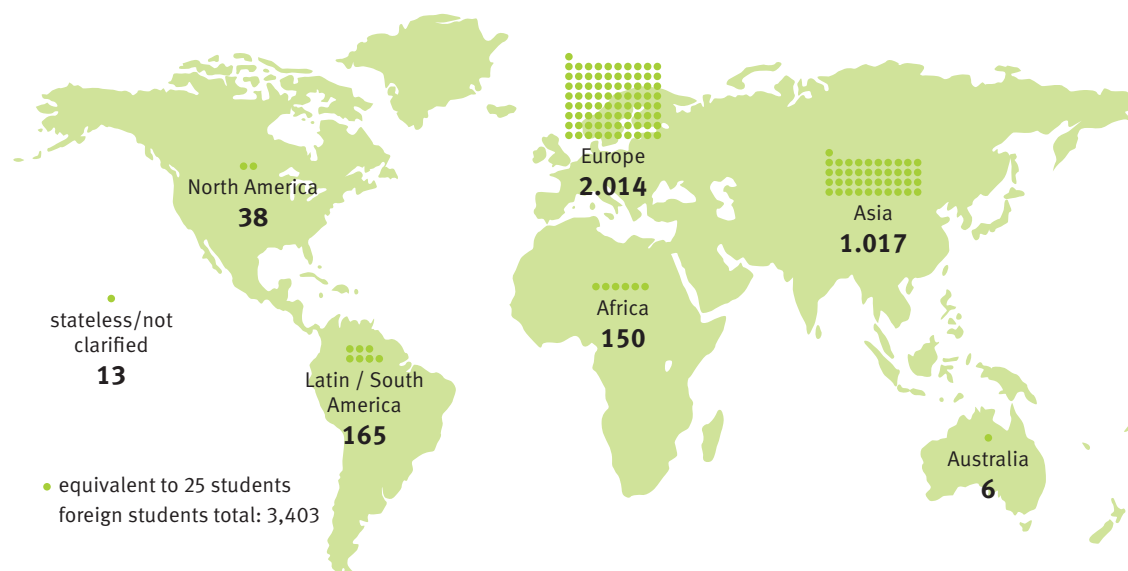
Department/Subject	Winter semester								
	05/06	06/07	07/08	08/09	09/10	10/11	11/12	12/13	13/14
Chemistry	1,358	1,456	1,420	1,375	1,360	1,441	1,723	1,678	1,788
Food Chemistry	206	230	229	239	238	229	215	216	207
Pharmacy	792	808	776	780	818	841	864	868	843
DEP 12 Chemistry and Pharmacy	2,356	2,494	2,425	2,394	2,416	2,511	2,802	2,762	2,838
DEP 13 Biology	1,548	1,506	1,414	1,424	1,478	1,523	1,636	1,746	1,756
Geography	1,453	1,469	1,400	1,317	1,300	1,329	1,267	1,300	1,325
Geosciences	301	269	255	278	289	351	349	353	405
Planetology	7	8	6	8	6	8	7	7	11
DEP 14 Geosciences	1,761	1,746	1,661	1,603	1,595	1,688	1,623	1,660	1,741
DEP 15 Music Department	226	223	205	187	246	264	270	297	298
General Knowledge for Primary School (Social Sciences)	22	17	17	17	20	19	20	17	13
General Knowledge for Primary School (general)	338	228	92	43	27	21	17	16	13
General Knowledge for Primary School (Natural Sciences)	13	13	14	17	16	18	17	15	10
Dutch Studies	190	165	142	120	105	96	275	268	268
Regional Studies Latin America	6	1	1	,	,	,	,	,	,
Islamic Theology	,	,	,	,	,	,	,	145	323
Religious Studies	47	49	53	46	48	52	72	73	75
Courses of study not assigned to a particular department (incl. General Knowledge for Primary School)	616	473	319	243	216	206	401	534	702
WWU in total	39,822	40,306	38,170	37,224	36,762	37,197	39,028	40,787	42,592
Female students	21,186	21,589	20,363	19,886	19,568	19,884	20,718	21,813	22,816
Percentage (%)	53.2	53.6	53.3	53.4	53.2	53.5	53.1	53.5	53.6
Foreign students	3,551	3,489	3,161	3,022	2,936	3,047	3,135	3,236	3,403
Percentage (%)	8.9	8.7	8.3	8.1	8.0	8.2	8.0	7.9	8.0

- No possibility of studying this particular course at WWU
- The subjects Religious Studies, Islamic Theology and Islamic Studies are split up due to the fact that Islamic Theology is now a subject in its own right, with effect from winter semester 2012/2013.

› Origin of German students in the winter semester 2013/14 by the Federal State where they obtained their general qualification for university entrance



› Regional origin of foreign students in the winter semester 2013/14 by continent



Source: Internal WWU Student Statistics: winter semester 2013/14

B. Number of First-Year Students

› First-year students* at WWU by target degree

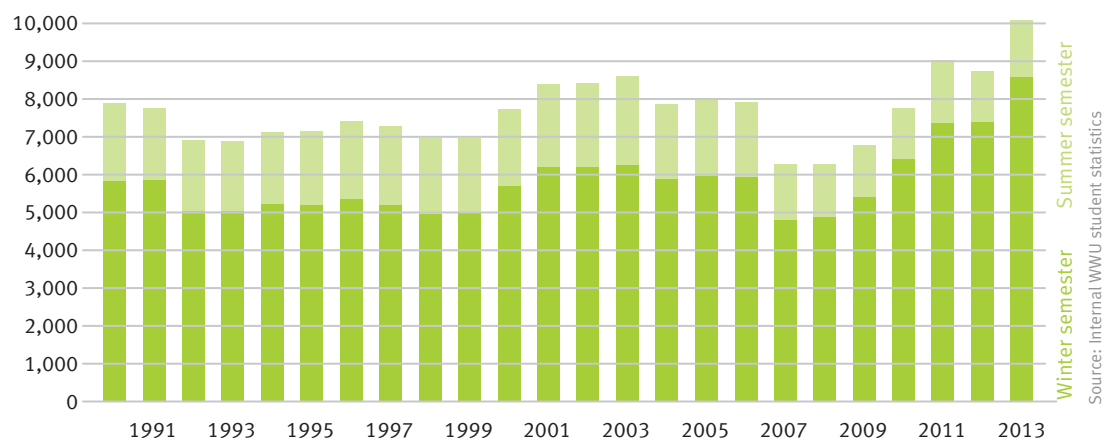
* regular students only (excluding students currently on leave, guest students, cross-registered students from other universities and foreign students attending German language programmes)

Target degree	Academic year (summer semester and following winter semester)								
	2005	2006	2007	2008	2009	2010	2011	2012	2013
State examination	1,071	1,059	1,059	1,102	1,079	1,088	1,174	1,172	1,204
Ecclesiastical degree + Licentiate + Magister Theologiae	54	41	120	62	90	170	422	635	593
Diploma	1,971	1,401	395	105	18	10	0	1	0
Magister Artium (M.A.)	1,103	220	27	9	0	0	0	0	0
Bachelor (BA, BSc)	716	1,312	2,000	2,016	2,346	2,319	3,103	3,049	3,878
Bachelor with two equal subjects (without teaching degrees)*	215	473	321	315	380	579	641	695	852
Master (MA, MSc)	36	100	112	320	677	1,120	1,304	1,321	1,454
Master of Further Education**	13	45	34	69	69
PhD/MD (Doctoral degree)	386	401	450	422	464	544	496	405	424
Others	388	388	465	691	712	561	494	535	572
Teaching degree for elementary schools: LA Primarstufe/ LA GHR, G/BA KJ (G)	382	309	217	263	229	284	287	260	309
Teaching degree for elementary, secondary and comprehensive schools: LA Sekundarstufe I/LA GHR, HRGe/BA KJ (HRGe)	293	259	183	199	231	335	311	295	358
Teaching degree for grammar/comprehensive schools: LA Sekundarstufe II/I/LA Gym/Ges/BA-2 HF	1,026	1,506	812	830	898	1,250	1,295	1,193	1,425
Teaching degrees in total (undergraduate level)	1,701	2,074	1,212	1,292	1,358	1,869	1,893	1,893	2,092
Master of Education for elementary school (MEd, G)	.	.	.	154	274	191	192	178	227
Master of Education for secondary school (MEd, HRGe)	.	.	.	61	144	111	130	139	184
Master of Education for secondary school (MEd, GyGe/BAB/BK2F)	.	.	.	178	624	499	433	510	594
Master of Education in total	.	.	.	393	1,042	801	755	827	1,005
WWU in total	7,607	7,439	6,145	6,712	8,137	9,054	10,431	10,554	12,143

Source: Internal WWU student statistics: winter semester 2013/14

- No possibility of studying for this particular type of degree at WWU.
- * Regarding the polyvalent Bachelor degrees with two subjects students are proportionately allocated a place in Educational and Non-Educational degree subjects. The distribution parameters are based on estimations (including figures until the summer semester 2013) and empirical data collected regarding the rate of transition from Bachelor to Master of Education subjects (since winter semester 2013/2014).
- ** Students taking a Master's degree in further education were included in the WWU student statistics for the first time in the winter semester 2009/10.

› Number of first-year students 1990–2013



2013 = summer semester 2013 and winter semester 2013/14

Source: Internal WWU student statistics

C. Capacity

› Development of capacity utilization (excluding medicine) by department/subject (in %)

DEP	Department/Subject	academic year (winter semester and following summer semester)								
		04/05	05/06	06/07	07/08	08/09	09/10	10/11	11/12	12/13
01	Protestant Theology	54	58	67	68	61	60	74	101	129
02	Roman Catholic Theology	64	72	77	80	72	68	78	101	115
03	Law	125	132	129	116	120	113	113	121	114
04	Information Systems	110	114	108	116	153	143	132	126	113
	Economics	95	98	113	120	113	109	113	119	114
06	Educational studies	96	95
	Communication Studies	125	125	136	126	157	136	108	102	103
	Education	95	102	83	90	100	107	101	108	106
	Social Sciences	117	139	137	128	127	107	104	103	92
07	Psychology	96	103	106	106	107	105	100	113	107
	Sport Studies	117	125	127	110	87	84	91	95	97
08	Archaeology	150	140	104	87	81	65	58	79	87
	Byzantine Studies	31	39	27	26	21	15	11	17	15
	Ethnology	99	112	89	97	82	71	64	63	89
	History	92	101	101	91	78	68	83	83	88
	Classical Philology	119	127	126	142	107	91	112	93	92
	Art History	93	81	90	79	78	70	103	90	89

Continued ›

DEP	Department/Subject	academic year (winter semester and following summer semester)								
		04/05	05/06	06/07	07/08	08/09	09/10	10/11	11/12	12/13
	Music Department	72	75	63	64	80	97	91	106	87
	Musicology	23	6	24	29	45	33	60	67	90
	Philosophy	84	93	85	73	64	62	80	79	94
	Prehistory and Early History	93	107	85	72	74	69	73	96	115
	Folklore and European Ethnology	92	114	135	153	135	140	100	121	131
09	General Linguistics	104	114	85	43	34	20	8	9	15
	English Philology	105	125	135	115	104	92	91	95	99
	German Philology/Old and New German Literature	122	140	141	128	102	90	88	96	94
	Indo-Germanic Linguistics	54	57	33	26	17	9	7	3	8
	Arabic and Islamic Studies	96	85	90	106	88	66	44	62	76
	Dutch Studies	118	102	106	52	48	30	50	261	206
	Dutch Philology	82	87	71	72	59	50	49	76	102
	Romance Language and Literature	93	103	102	101	88	76	82	84	81
	Sinology	84	106	70	57	57	60	74	95	121
	Scandinavian Studies	50	55	51	44	58	51	93	110	145
	Slavonic Studies/Baltic Studies	13	6	10	28	49	40	24	26	21
	Egyptology/Coptology	119	131	64
	Ancient Oriental Studies	32	33	23
Ancient Oriental Studies and Egyptology	.	.	54	46	44	42	39	74	102	
10	Mathematics and Computer Sciences	110	121	130	111	105	106	96	106	107
11	Geophysics	63	79	98	71	62	80	88	155	228
	Physics	75	76	78	73	63	71	72	98	120
	Technology	57	54	42	36	38	46	47	51	49
12	Chemistry	100	109	107	103	94	89	87	114	111
	Food Chemistry	78	92	114	123	127	117	104	102	102
	Pharmacy	95	99	100	101	107	114	113	110	105
13	Biology	94	92	88	84	81	87	93	92	97
14	Geography	120	121	121	107	108	108	118	126	131
	Geoscience	78	98	92	89	72	77	93	97	97
	Religious Studies	21	28	49	54	44	39	29	73	115
	Humanities	90	98	97	92	87	81	84	94	97
	Social Sciences	110	117	122	119	121	113	113	118	111
	Natural Sciences	96	101	101	94	88	91	91	105	110
	WWU in total	96	103	103	98	94	91	92	103	105

• No possibility of studying this subject at WWU

Source: Calculations by WWU based on official student statistics and internal student statistics as well as calculations by the Ministry of Science

D. Examinations and Graduates

› The 20 German universities with the highest number of examinations

Higher Education Institution	Total		Female	
	Rank	N	N	in %
U Munich	1	9,492	6,002	63.2
Baden Wuerttemberg Cooperative State University (FH)	2	7,441	3,398	45.7
TU Munich	3	7,378	2,404	32.6
U Hamburg	4	7,177	4,333	60.4
U Münster	5	6,754	3,817	56.5
TH Aachen	6	6,304	2,050	32.5
TU Dresden	7	6,181	3,103	50.2
U Erlangen-Nuremberg	8	6,174	3,254	52.7
U Cologne	9	5,938	3,553	59.8
U Mainz	10	5,755	3,575	62.1
U Bochum	11	5,491	2,679	48.8
FU Berlin	12	5,402	3,248	60.1
U Leipzig	13	5,344	3,469	64.9
U Heidelberg	14	5,161	2,910	56.4
U Frankfurt a,M,	15	5,131	3,084	60.1
U Duisburg-Essen	16	5,039	2,714	53.9
U Bonn	17	4,962	2,788	56.2
U Göttingen	18	4,716	2,554	54.2
HU Berlin	19	4,580	2,810	61.4
U Freiburg i.Br.	20	4,564	2,452	53.7
Top 20 in total		118,984	64,197	54.0
Universities in total		258,775	139,073	53.7
HEIs in total		413,338	209,691	50.7

passed (by type of degree) in the academic year 2012

of which							
Diploma (U) and equivalent degrees		Teaching degrees		Bachelor		Master	
Rank	N	Rank	N	Rank	N	Rank	N
1	3,380	6	1,184	2	3,010	11	724
173	0	96	0	1	7,441	304	0
7	2,119	47	315	3	2,689	1	1,368
6	2,135	4	1,297	9	1,918	5	944
14	1,761	3	1,417	8	1,936	7	906
8	1,994	62	163	5	2,333	4	1,031
2	2,682	16	801	29	1,381	17	645
10	1,867	15	803	6	2,135	15	682
5	2,245	5	1,277	23	1,486	61	331
3	2,474	8	1,052	34	1,303	76	285
28	1,056	41	417	4	2,365	2	1,192
20	1,555	28	535	15	1,561	3	1,066
16	1,688	11	906	22	1,494	10	795
11	1,823	27	547	47	1,168	38	471
9	1,912	21	693	27	1,424	35	488
27	1,114	9	995	11	1,770	12	720
4	2,269	96	0	26	1,473	26	552
26	1,115	54	226	10	1,773	8	864
24	1,143	17	784	37	1,230	6	940
19	1,578	30	517	44	1,177	25	555
	35,910		13,929		41,067		14,559
	75,506		34,650		85,543		36,301
	80,290		38,708		183,169		58,560

Source: German Federal Statistics Office, subject series 11 (Statistisches Bundesamt, Fachserie 11)

› Graduates by subject groups in comparison with all universities in NRW (excluding medicine) – parameter graduates in the performance-based budgeting for the financial year 2013

Higher Education Institution	Weighted number of graduates (average of the years 2009–2011)*				%
	Humanities and Social Sciences	Natural Sciences	Engineering	Graduates in total	
U Münster	5,285	2,273	16	7,574	14.81
U Cologne	4,917	1,093	6	6,016	11.76
U Bochum	3,180	1,128	534	4,842	9.47
U Bonn	2,691	1,742	52	4,485	8.77
U Duisburg-Essen	2,874	1,102	448	4,423	8.65
TH Aachen	996	1,489	1,832	4,317	8.44
U Dortmund	1,993	1,087	654	3,734	7.30
U Bielefeld	2,565	972	0	3,537	6.92
U Siegen	1,695	414	327	2,436	4.76
U Düsseldorf	1,672	762	0	2,434	4.76
U Paderborn	1,480	627	299	2,407	4.71
U Wuppertal	1,264	386	526	2,176	4.26
FeU Hagen	1,578	199	68	1,845	3.61
DSH Cologne	910	5	0	915	1.79
Total	33,099	13,281	4,762	51,143	100.00

Source: MIWF NRW – Department 111

* Bachelor and Diploma with weighting factor 1.0; Master = 0.5, only graduates from (full) degree programmes; graduates within the regular duration of study are given the factor 2 (exception: graduates in part-time studies from the FeU Hagen are given the factor 1.33), otherwise factor 1

› Graduates in their main subject by department/course of study in the academic years 2004–2012

without doctoral degrees and courses of further education

Department/Course of study	Academic year									
	2004	2005	2006	2007	2008	2009	2010	2011	2012	
DEP 01 Protestant Theology	46	69	50	67	55	42	63	49	42	
Canon Law	12	10	10	5	0	0	5	3	7	
Roman Catholic Theology	142	131	125	147	142	108	124	94	98	
DEP 02 Roman Catholic Theology	154	141	135	152	142	108	129	97	105	
DEP 03 Law	567	471	587	677	468	841	470	572	532	
Household Economics	8	14	16	37	32	8	14	6	3	
Information Systems	62	86	93	138	163	191'	134'	131	122	
Economics	418	490	402	562	586	769'	831'	809	668	
DEP 04 Economics	488	590	511	737	781	968	979	946	793	
Medicine	266	326	284	260	235	264	280	254	232	
Dentistry	60	77	93	90	91	104	81	114	81	
DEP 05 Medicine	326	403	377	350	326	368	361	368	313	
Applied Cultural Studies	1	0	0	0	0	0	0	0	0	
Communication Studies	89	89	104	137	112	220'	187'	166	116	
Education	184	206	183	192	197	211	308	310	238	
Political Sciences	115	135	168	172	158	197'	175'	183	149	
Social Sciences	21	31	21	35	33	30	23	14	12	
Sociology	42	27	38	41	57	58	47	38	35	
DEP 06 Education and Social Studies	452	488	514	577	557	716	740	711	551	
Psychology	89	91	105	79	113	73	186	177	216	
Sport Studies	115	107	111	127	176	200	152	159	147	
DEP 07 Psychology and Sport Studies	204	198	216	206	289	273	338	336	363	
Archaeology	8	6	5	8	4	2	9	9	13	
Byzantine Studies	0	0	0	0	1	0	0	0	1	
Ethnology	17	10	19	12	20	38	32	32	33	
History	106	108	111	127	164	226	205	205	182	
Classical Philology	16	15	11	18	25	44	53	53	49	
Art	13	14	14	11	2	4	2	2	7	

Continued ›

Department/Course of study	Academic year								
	2004	2005	2006	2007	2008	2009	2010	2011	2012
Art History	22	20	26	16	17	40	35	35	37
Medieval Latin Philology	0	0	0	0	1	0	0	0	0
Music	38	39	57	40	30	25	37	36	48
Musicology	0	5	3	7	4	4	6	5	5
Philosophy	24	27	82	31	42	47	40	44	47
Textile Design	13	17	11	7	4	3	0	0	0
Prehistory and Early History	11	5	15	7	3	7	11	8	6
Folklore and European Ethnology	9	9	4	9	2	11	11	9	12
DEP 08 History and Philosophy	277	275	358	293	319	451	441	438	440
Egyptology/Coptology	4	3	4	1	4	7	3	0	2
General Linguistics	5	12	9	11	9	12	6	4	5
English Philology	70	57	86	117	156	255	269	209	185
Baltic Studies	1	1	0	0	1	1	1	0	0
German Philology/Old and New German Literature	230	250	281	343	619	923	737	560	494
Indo-Germanic Linguistics	0	1	1	2	1	3	1	1	2
Indian Studies	0	1	0	0	0	0	0	0	0
Arabic and Islamic Studies	0	2	2	2	5	8	10	23	15
Dutch Philology	38	30	23	27	37	33	56	50	30
Ancient Oriental Studies	0	2	2	0	2	2	6	4	12
Romance Language and Literature	60	65	40	39	73	151	173	162	117
Sinology	0	6	6	1	0	3	4	6	8
Scandinavian Studies	3	4	4	3	6	10	10	8	8
Slavonic Studies	10	7	10	11	5	1	0	6	3
DEP 09 Philologies	421	441	468	557	918	1,409	1,276	1,033	881
Computer Sciences	9	4	8	18	12	32	47	75	47
Mathematics	145	106	147	194	365	481	499	462	485
DEP 10 Mathematics and Computer Sciences	154	110	155	212	377	513	546	537	532
Geophysics	4	3	6	5	7	10	19	11	13
Physics	45	56	53	79	88	91	113	112	118
Technology	14	11	2	12	10	12	6	10	6
DEP 11 Physics	63	70	61	96	105	113	138	133	137

Continued >

Department/Course of study	Academic year								
	2004	2005	2006	2007	2008	2009	2010	2011	2012
Chemistry	53	87	77	89	138	138	196	206	221
Food Chemistry	24	19	23	28	15	25	57	66	62
Pharmacy	97	62	97	99	116	84	108	119	178
DEP 12 Chemistry and Pharmacy	174	168	197	216	269	247	361	391	461
DEP 13 Biology	143	157	270	317	283	289	277	284	300
Geography	133	130	110	162	184	283 ^r	248 ^r	254	198
Geology	14	13	17	10	1	0	0	0	0
Geoscience	6	11	8	23	36	31	55	59	47
Mineralogy	3	2	2	0	0	0	0	0	0
DEP 14 Geosciences	156	156	137	195	221	314	303	313	245
DEP 15 Music Department*	25
General Knowledge for Primary School (Focus: Social Sciences)	48	27	44	57	28	9	14	6	5
General Knowledge for Primary School (Focus: Natural Science)	5	32	64	65	17	4	6	7	5
General Knowledge for Primary School (general)	14	22	3	6	7	1	1	1	0
General Knowledge for Primary School	67	81	111	128	52	14	21	14	10
Religious Studies	.	.	1	0	1	10	4	11	1
WU in total	3,692	3,818	4,148	4,780	5,163	6,676^r	6,447^r	6,233	5,731
Female graduates	2,029	2,148	2,474	2,891	3,164	3,952	3,854	3,662	3,396
Percentage (%)	55.0	56.3	59.6	60.5	61.3	59.2	59.8	58.8	59.3
Foreign graduates	143	157	161	190	169	229	201	255	275
Percentage (%)	3.9	4.1	3.9	4.0	3.3	3.4	3.1	4.1	4.8
WU in total (excluding medicine)	3,366	3,415	3,771	4,430	4,837	6,308^r	6,086^r	5,865	5,418
Female graduates	1,873	1,924	2,260	2,696	2,970	3,742	3,640	3,446	3,206
Percentage (%)	55.6	56.3	59.9	60.9	61.4	59.3	59.8	58.8	59.2
Foreign graduates	113	124	132	167	145	204	181	223	259
Percentage (%)	3.4	3.6	3.5	3.8	3.0	3.2	3.0	3.8	4.8

• Course not offered

^r Internal correction (Department 5.3)

* The Music Department was included in the university's examination statistics in 2012 for the first time.

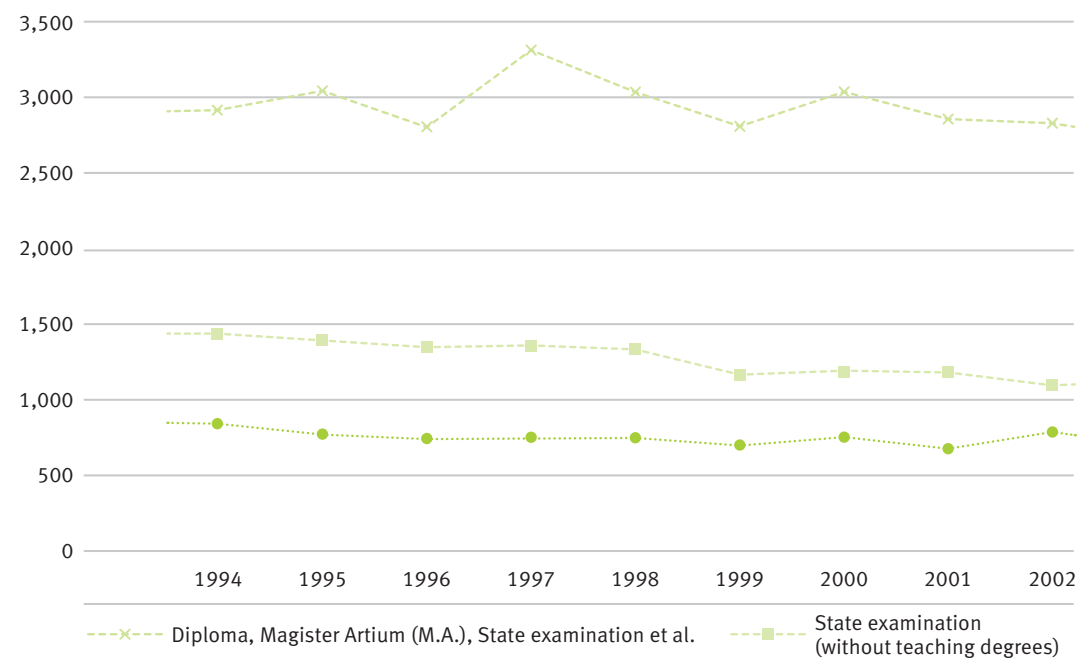
Source: Internal statistics of WU based on official examination statistics by the IT.NRW

› Number of examinations passed by type of degree 1996–2012

Type of degree	Academic year						
	1996	1997	1998	1999	2000	2001	2002
Magister Artium (M.A.)	390	353	355	317 ^r	392 ^r	380 ^r	417
State examination	1,350	1,356	1,333	1,165	1,185	1,182	1,095
Diploma	1,374	1,444	1,271	1,109	1,091	1,064	1,148
Ecclesiastical degree	43	37	25	25	30	17	19
Licentiate	8	14	10	17	11	10	5
Doctoral degree	744	752	739	700	753	674	787
Teaching degree for elementary school (LA Primarstufe)	511	470	485	579	689	591	487
Teaching degree for secondary school (LA Sekundarstufe I)	177	132	157	173	187	210	205
Teaching degree for secondary school (LA Sekundarstufe II, II/I)	312	860	730	603	636	598	560
Bachelor (BA, BSc) (inclusive Bachelor course (major/minor))
Bachelor (BA-2 HF)
Bachelor (BA KJ (G), BA KJ (HRGe))
Master (MA, MSc)
Master of Further Education
Master of Education for teaching at primary school (MEd, G)
Master of Education for teaching at elementary schools, secondary modern schools, comprehensive schools (MEd, HRG)
Master of Education for teaching at grammar schools, comprehensive schools and vocational school
Certificate
Total	4,909	5,418	5,105	4,688	4,974	4,726	4,723

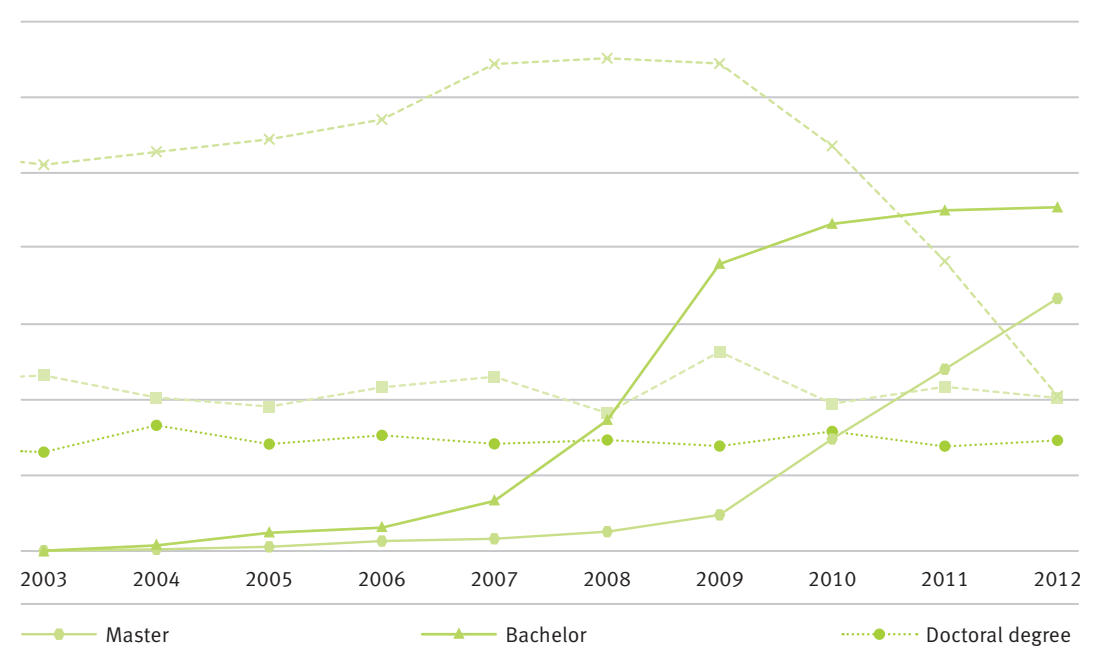
^r Internal correction (Department 5.3) • No possibility of studying for this particular type of degree at WWU

› Number of examinations passed by type of degree in the years 1994–2012



Type of degree	Academic year									
	2003	2004	2005	2006	2007	2008	2009	2010	2011	2012
Magister Artium (M.A.)	522 ^r	498	526	578	563	574	607	522	384	199
State examination	1,161	1,014	955	1,082	1,152	913	1,318	973	1,086	1,012
Diploma	863	1,098	1,095	1,110	1,234	1,156	1,200 ^r	1,164 ^r	985	510
Ecclesiastical degree	29	12	26	10	8	4	9	12	17	18
Licentiate	7	15	12	12	6	4	0	5	4	8
Doctoral degree	654	831	707	765	711	734 ^r	694 ^r	791	696	734
Teaching degree for elementary school (LA Primarstufe)	306	309	347	393	512	444	329	147	58	32
Teaching degree for secondary school (LA Sekundarstufe I)	178	152	190	213	277	303	252	136	80	44
Teaching degree for secondary school (LA Sekundarstufe II, II/I)	639	541	510	517	616	768	807	675	381	202
Bachelor (BA, BSc) (inclusive Bachelor course (major/minor))	2	11	118	157	331	413	690 ^r	1,140 ^r	1,270	1,247
Bachelor (BA-2 HF)	227	806	727	666	689
Bachelor (BA KJ (G), BA KJ (HRGe))	224	402	307	299	327
Master (MA, MSc)	2	37	28	66	81	128	149 ^r	171 ^r	354	618
Master of Further Education	105	206	246
Master of Education for teaching at primary school (MEd, G)	71	228	178	207
Master of Education for teaching at elementary schools, secondary modern schools, comprehensive schools (MEd, HRG)	19	109	99	124
Master of Education for teaching at grammar schools, comprehensive schools and vocational school	128	365	480
Certificate	.	5	12	10	4	5	17	3	7	14
Total	4,363	4,523	4,526	4,913	5,495	5,897	7,349	7,322	7,135	6,711

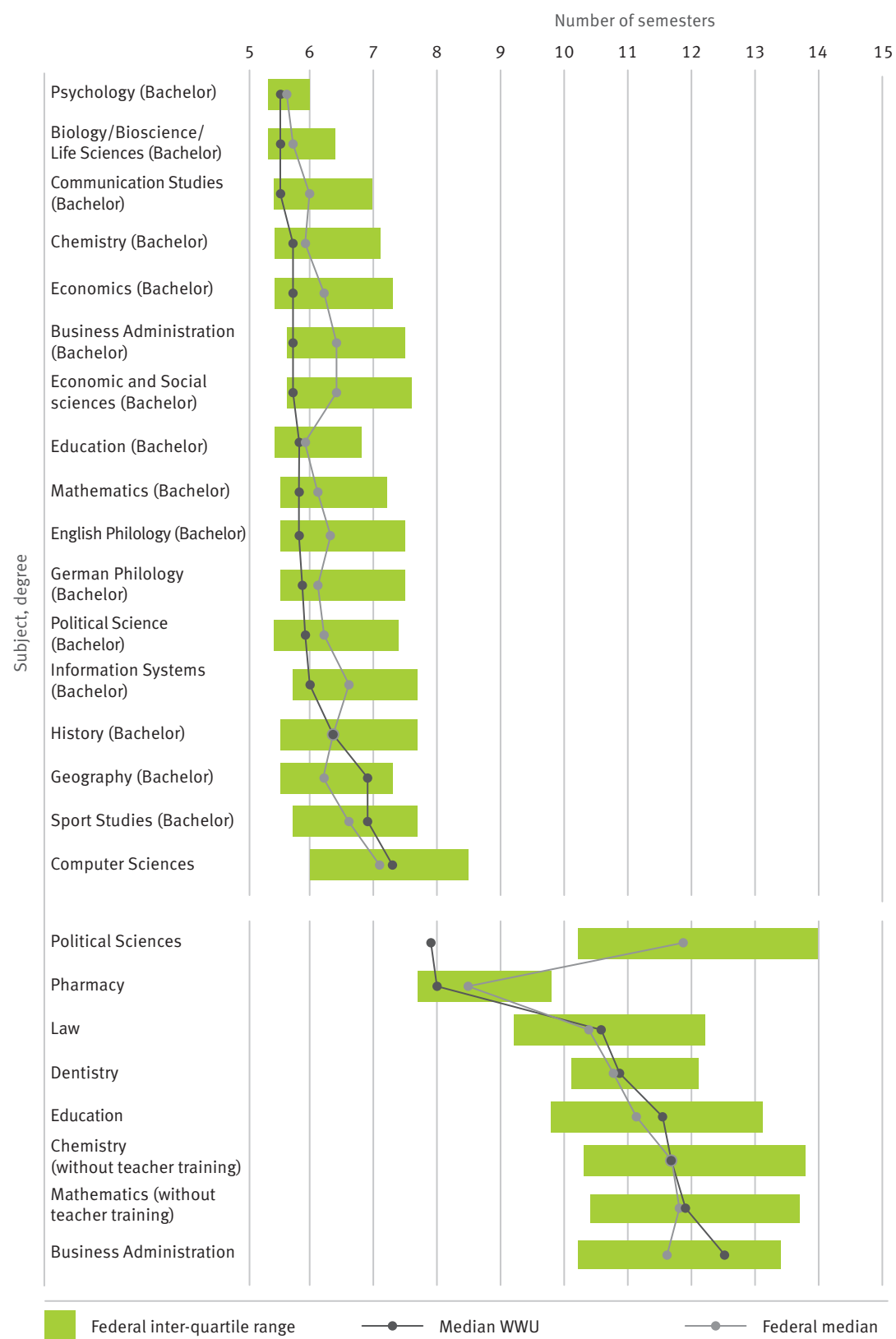
Source: Official examination statistics by the IT.NRW



Source: Official examination statistics by the IT.NRW

E. Duration of Study

› Average duration of study (median) in selected subjects* at WWU in the academic year 2012 in national comparison



Source: WWU's own calculations and chart, based on: German Federal Statistics Office, subject series 11 (Statistisches Bundesamt, Fachserie 11)

* The data of the German Federal Statistics Office only includes subjects with more than 900 graduates nationwide. Presented here are those subjects in which WWU is among the universities with the most graduates in the particular subject.

F. Academic Success

› Development of academic success by type of degree

Type of degree	Academic success	2004–06	2007–09	2010–12
	Examinations passed	2004–06	2007–09	2010–12
	First-year students	2001–03	2004–06	2007–09
Bachelor (BSc, BA)	Academic success	34%	52%	57%
	Examinations passed (t)	141	675	3,604
	First-year students (t–3)	416	1,290	6,310
Bachelor with two equal subjects	Academic success	.	34%	58%
	Examinations passed (t)	.	2,046	4,159
	First-year students (t–3)	.	6,025	7,220
Bachelor KJ in total	Academic success	.	57%	70%
	Examinations passed (t)	.	1,252	1,862
	First-year students (t–3)	.	2,194	2,662

Type of degree	Academic success	2004–06	2007–09	2010–12
	Examinations passed	2004–06	2007–09	2010–12
	First-year students	2002–04	2005–07	2008–10
Master (MSc, MA)	Academic success	54%	53%	49%
	Examinations passed (t)	21	132	685
	First-year students (t–2)	39	250	1,400
Master of Education (LA GymGes)	Academic success	.	.	72%
	Examinations passed (t)	.	.	1,746
	First-year students (t–2)	.	.	2,426

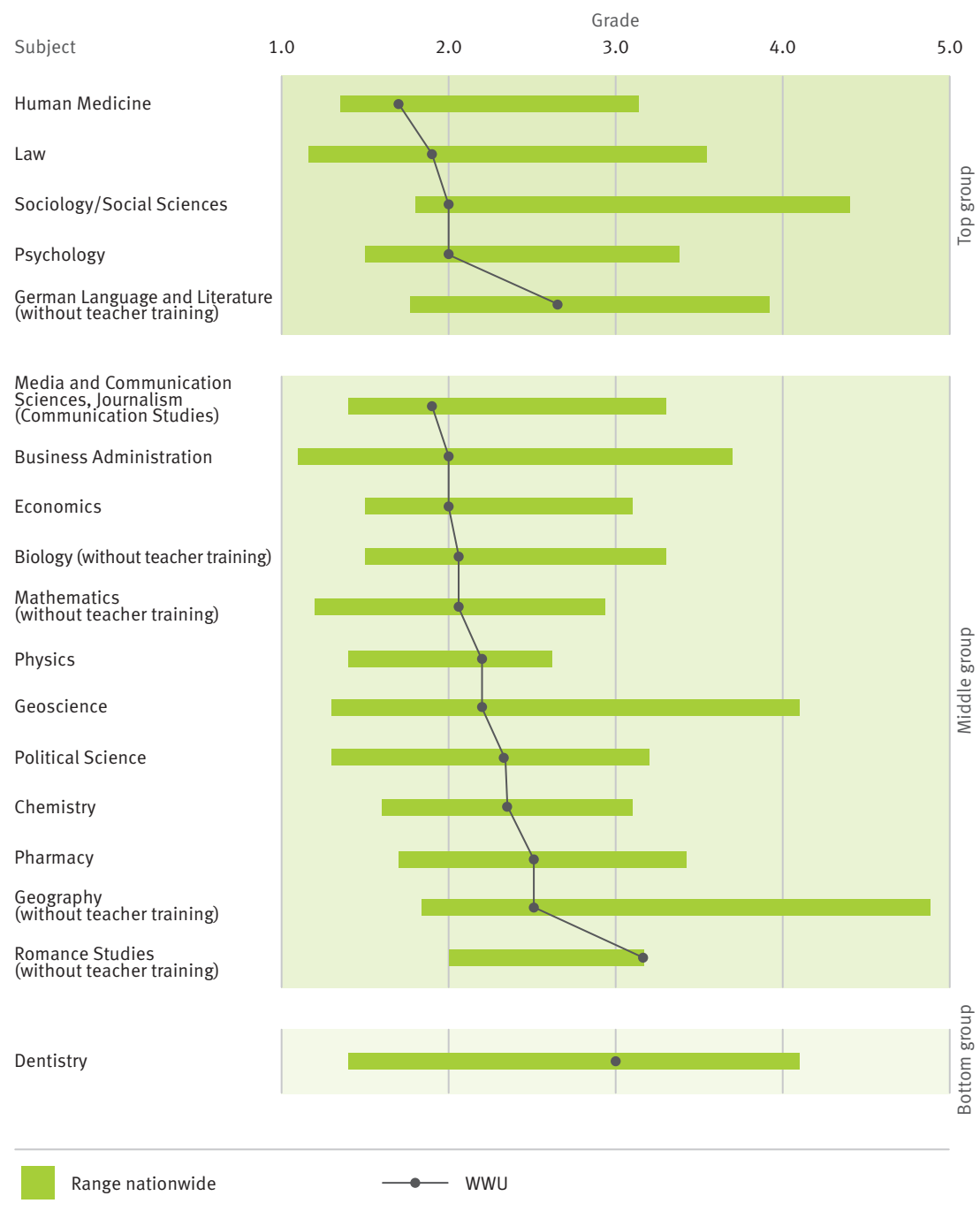
Type of degree	Academic success	2004–06	2007–09	2010–12
	Examinations passed	2004–06	2007–09	2010–12
	First-year students	2003–05	2006–08	2009–11
Master of Education (LA G)	Academic success	.	.	93%
	Examinations passed (t)	.	.	1,225
	First-year students (t–1)	.	.	1,322
Master of Education (LA HRG)	Academic success	.	.	83%
	Examinations passed (t)	.	.	662
	First-year students (t–1)	.	.	797

Type of degree	Academic success	2004–06	2007–09	2010–12
	Examinations passed	2004–06	2007–09	2010–12
	First-year students	1999–01	2002–04	2005–07
State examination	Academic success	84%	114%	98%
	Examinations passed (t)	1,945	2,339	2,029
	First-year students (t–5)	2,310	2,050	2,071

Source: Internal WWU statistics based on official examination statistics and internal student statistics

G. CHE University Ranking 2011–2013

› Student rating of overall study situation at WWU



Source: CHE-University Rankings (<http://ranking.zeit.de/che2013/de/?lang=en>)

› Student assessment of selected aspects of studying and teaching at WWU

Subject	Year of ranking	Overall study situation ¹		Counselling ²		Courses offered ³		Study organisation ⁴	
		Grade	League group	Grade	League group	Grade	League group	Grade	League group
Medicine	2012	1.7	A	2.4	A	2.7	A	2.1	A
Law	2011	1.9	A	2.9	C	2.5	B	2.3	B
Psychology	2013	2.0	A	2.1	A	2.5	B	2.3	D
Sociology/Social Sciences	2011	2.1	A	-	-	-	-	2.7	B
German Language and Literature (without teacher training)	2013	2.6	A	2.5	D	3.1	B	3.1	B
Media- and Communication Sciences, Journalism (Communication Studies)	2011	1.9	B	2.1	B	2.4	B	2.1	A
Business Administration	2011	2.0	B	2.4	B	2.5	B	2.3	B
Economics	2011	2.0	B	-	-	2.4	B	-	-
Biology (without teacher training)	2012	2.1	B	2.4	B	2.7	B	2.5	A
Mathematics (without teacher training)	2012	2.1	B	2.0	B	2.5	B	2.5	B
Physics	2012	2.2	B	2.2	B	2.7	B	2.6	B
Geoscience	2012	2.2	B	1.7	A	-	-	2.6	B
Political Science	2011	2.3	B	2.5	B	2.4	A	2.5	B
Chemistry	2012	2.3	B	2.4	B	2.7	B	2.8	B
Pharmacy	2012	2.5	B	2.5	B	3.3	C	2.7	B
Geography (without teacher training)	2012	2.5	B	2.2	B	2.8	B	2.9	B
Romance Languages and Literature (without teacher training)	2013	3.2	B	2.6	D	3.3	B	3.2	D
Dentistry	2012	3.0	C	3.2	C	3.6	C	3.0	B

Positive change in comparison with the last ranking (three years earlier)
 Negative change in comparison with the last ranking (three years earlier)

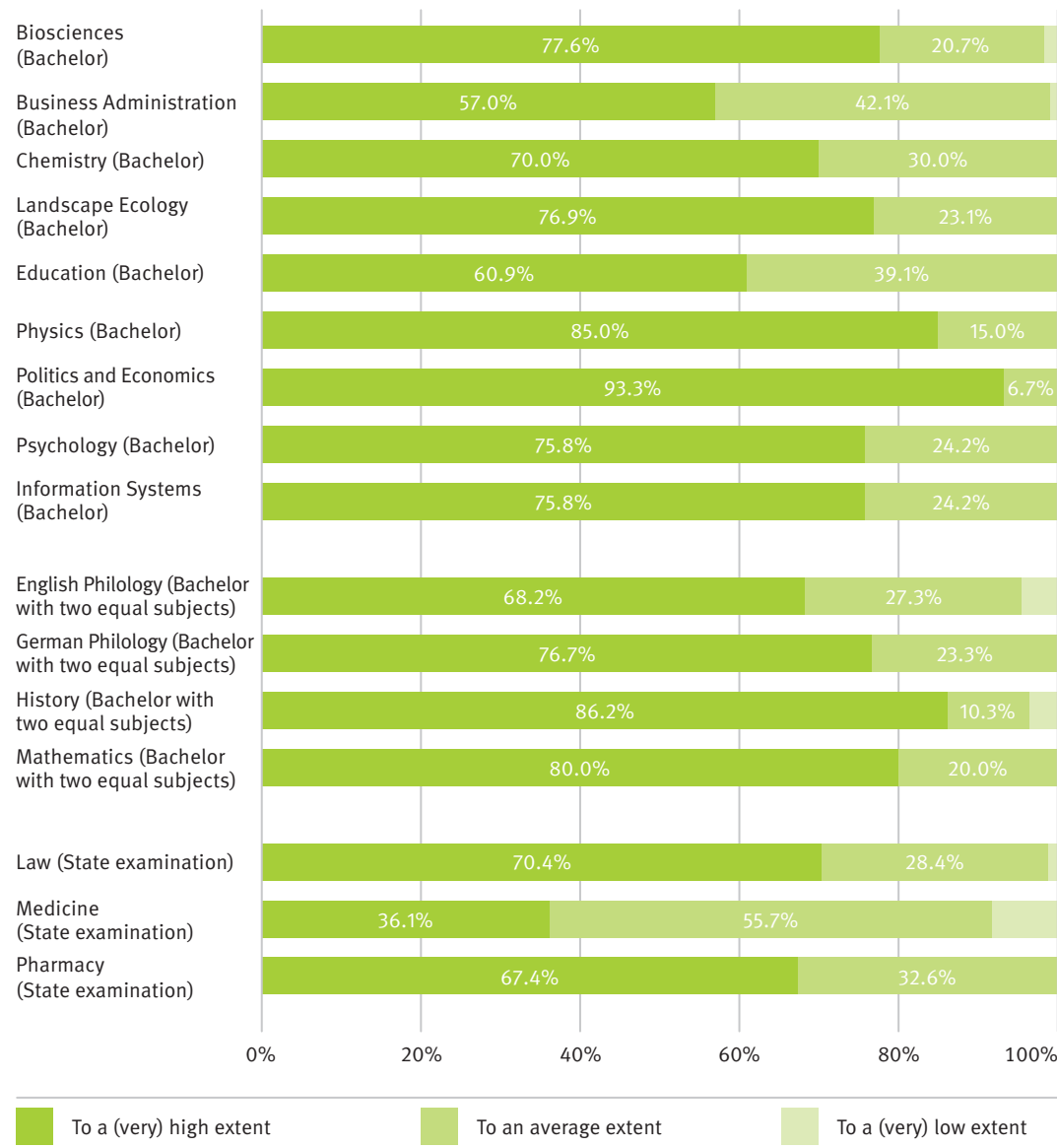
A Top group B Middle group C Bottom group D Not ranked

- Individual Question
- Index made up of several individual assessments (e.g. lecturers' accessibility, teachers' consulting hours, support and advice given by teachers, discussion of homework and term papers); assessments made on a scale of 1 (very good) to 6 (very bad).
- Index made up of several individual assessments (e.g. breadth of content, international orientation and interdisciplinary aspects of teaching); assessments made on a scale of 1 (very good) to 6 (very bad).
- Index made up of several individual assessments (e.g. completeness of courses offered with respect to study regulations, opportunities for access to compulsory teaching and harmonization of courses offered with examination regulations); assessments made on a scale of 1 (very good) to 6 (very bad).

H. Graduate Survey

Selection of graduates' results in the academic year 2011

› Graduates' assessment of their professional competence



The index "professional competence" is an additive index consisting of six individual items. The original question was: To what extent did you acquire the following skills/competencies upon graduation?

Individual items:

- Ability to apply scientific methods
- Command of your study field or discipline
- Analytical thinking
- Ability to write reports, memos or documents
- Ability to develop new ideas and solutions
- Ability to question your own and others' ideas

The evaluation was based on a Likert-Scale from 1 = To a very high extent to 5 = Not at all

Grade 1.7

How do you feel about your relation to Münster as your city of study?

Arith. mean (1= very positive, 5 = very negative)

90.8%

Have you started another course of studies after your bachelor studies?

Percentage of affirmative answers

79.0%

If you were free to choose again, would you choose the same university?

Percentage of answers marked as (highly) probable

Grade 2.3

How do you feel about your relation to WWU Münster as your university?

Arith. mean (1= very positive, 5 = very negative)

27.2%

Have you changed the higher education institution for your further studies?

Percentage of affirmative answers

73.2%

If you were free to choose again, would you choose the same field of education?

Percentage of answers marked as (highly) probable

› Results regarding career entry and assessment of employment

	Diploma	Magister Artium	State examination	Bachelor	Bachelor with two equal subjects	Master	Doctoral degree
Situation at the time the survey was carried out							
Employment only	58.8%	41.4%	27.0%	16.6%	9.3%	46.9%	84.2%
Employment and training	16.5%	38.7%	60.1%	19.7%	28.3%	14.2%	11.8%
Training only	21.3%	11.7%	10.2%	58.9%	60.6%	35.4%	0.0%
None of the above	3.5%	8.1%	2.7%	4.8%	1.8%	3.5%	3.9%
Job search and employment situation (only alumni in employment)							
Duration of job search (arith. mean in months)	3.5	6.1	1.3	2.7	3.1	2.9	2.9
Number of employers contacted (arith. mean)	16.7	22.1	4.3	21.9	11.6	16.8	8.5
Percentage of alumni in full-time employment	82.5%	66.7%	89.4%	65.7%	23.1%	93.9%	87.8%
Percentage of alumni with an unlimited contract of employment	60.2%	33.3%	38.8%	58.7%	33.3%	70.6%	45.1%
Evaluation of current employment* (only alumni in employment)							
Qualifications used to a high degree	40.8%	34.1%	65.9%	34.3%	35.0%	50.9%	76.6%
Work assignments related to field of study	81.0%	59.1%	97.6%	80.0%	63.2%	80.8%	86.9%
Employment commensurate with academic level	77.9%	75.0%	95.2%	85.7%	83.3%	76.9%	88.5%
Job situation appropriate	58.5%	45.5%	70.6%	50.7%	44.4%	69.2%	76.4%
Current job satisfaction	65.6%	60.0%	72.3%	68.7%	68.8%	67.3%	78.9%

* The percentage of respondents who answered the respective questions with "(very) applicable". For further information go to www.uni-muenster.de/absolventenbefragung



› Budget of WWU (excluding medicine) in the years 2007–2012

Expenditure (in € m)	2007	2008	2009	2010	2011*	2012
Staff expenditure (without third-party funds and special funds)	146.6	144.0	149.8	156.0	160.1	160.4
Expenditure on equipment (without third-party funds and special funds)	46.0	53.8	52.6	49.2	53.6	44.8
Capital expenditure (without third-party funds and special funds)	10.0	7.2	6.9	17.6	14.7	11.3
Rents and leases	42.0	44.1	45.1	46.4	47.2	49.0
Third-party funds	47.4	52.9	71.9	78.9	80.2	81.0
Special funds ²	13.9	12.1	19.4	23.3	25.7	25.6
Tuition fees	3.6	13.3	15.8	18.0	15.6	15.4
Total	309.5	327.4	361.5	389.4	397.1	387.5

Source: Dept. 5

* updated figures

› Key data on current expenditure* at selected universities (excluding medicine) compared to the rest of the country ("German U15")

University	Current expenditure (basic funding) (in € 1,000)					
	2011			2010		
	per student	per academic staff	per professor	per student	per academic staff	per professor
U Freiburg i.Br.	9.00	141.67	568.34	8.67	131.69	552.14
U Bonn	8.45	158.15	601.50	9.13	146.76	582.82
U Göttingen	8.43	158.69	499.00	8.90	159.94	532.32
U Tübingen	7.31	127.28	470.89	7.90	141.78	502.10
FU Berlin	7.06	149.39	478.73	7.26	145.71	522.28
U Leipzig	6.91	138.61	482.01	6.66	137.38	478.14
U Hamburg	6.76	131.14	425.94	6.89	134.50	444.85
U Heidelberg	6.35	114.77	514.91	6.80	120.26	552.06
U Cologne	6.32	176.56	669.23	6.46	166.45	611.57
U Munich	6.28	111.05	495.21	6.86	120.56	534.01
U Münster	5.78	118.93	510.76	5.51	107.00	473.75
U Frankfurt a.M.	5.56	136.56	481.05	6.85	160.21	576.67
U Mainz	5.56	117.04	464.10	5.41	117.35	445.16
U Würzburg	5.47	89.10	418.61	5.84	97.05	454.39
HU Berlin	3.22	68.14	217.31	3.49	77.14	243.96
German U15 in total	6.42	128.48	483.02	6.70	130.74	498.44
Universities in total	6.56	128.59	519.75	6.75	124.82	510.02

Source: German Federal Statistics Office, subject series 11 (Statistisches Bundesamt, Fachserie 11)

* The so-called current expenditure (basic state funding) for teaching and research is part of the university's expenditure which the university funding body provides out of its own budget for the university's current assignments.

› WWU's cost structure in the financial year 2012 (excluding medicine)

Cost type	Federal budgeting	Third-party funding	Total costs	Percentage of NRW state budgeting	Percentage of third-party funding
	in €	in €	in €		
Costs for civil servants	64,141,798	2,253,148	66,394,946		
Costs for other employees	102,470,978	46,519,423	148,990,400		
Costs for apprentices/interns	1,586,285	0	1,586,285		
Costs for (student) assistants	8,909,581	5,232,456	14,142,037		
Other personnel costs	12,265,162	439,042	12,704,204		
Personnel costs in total	189,373,804	54,444,068	243,817,872	62.4%	72.5%
Costs for energy and materials supplies	8,506,535	89,300	8,595,835		
Costs for contract cleaners	3,807,032	11,558	3,818,589		
Other running costs	5,900,807	160,281	6,061,088		
Running costs in total	18,214,374	261,139	18,475,513	6.0%	0.3%
Material costs	5,707,582	3,353,745	9,061,328		
Communication costs	1,243,461	17,175	1,260,636		
Costs for literature supply	6,333,959	721,753	7,055,711		
Rent for equipment	319,196	67,666	386,862		
Other running material costs	15,973,520	11,389,307	27,362,827		
Running material costs in total	29,577,718	15,549,646	45,127,364	9.7%	20.7%
Leasing costs to the NRW Department of Buildings and Real Estate Services (BLB)	47,934,240	0	47,934,240		
Leasing costs to others	2,372,029	91,348	2,463,377		
Leasing costs in total	50,306,270	91,348	50,397,617	16.6%	0.1%
Calculatory depreciation	16,146,598	4,747,673	20,894,271	5.3%	6.3%
Costs in total	303,618,764	75,093,873	378,712,637	100.0%	100.0%

Source: Cost and performance accounting

› Performance-oriented budgeting for the financial year 2013 (excluding

Higher Education Institution	Planned target (after adjustments)		Performance Budget ¹	Parameters for formula-based allocation ²	
	in € 1,000	%		in € 1,000	Graduates ³ in %
TH Aachen	249,467	13.27	57,377	8.44	4.71
U Münster	198,890	10.58	45,745	14.81	7.60
U Bochum	199,453	10.61	45,874	9.47	7.68
U Cologne	195,971	10.43	45,073	11.76	8.89
U Bonn	196,086	10.43	45,100	8.77	4.31
U Duisburg-Essen	171,251	9.11	39,388	8.65	7.45
U Dortmund	136,458	7.26	31,385	7.30	7.18
U Bielefeld	123,474	6.57	28,399	6.92	8.46
U Paderborn	82,202	4.37	18,907	4.71	10.08
U Siegen	76,045	4.05	17,490	4.76	8.05
U Düsseldorf	92,470	4.92	21,268	4.76	6.64
U Wuppertal	78,936	4.20	18,155	4.26	8.46
FeU Hagen	52,640	2.80	12,107	3.61	7.75
DSH Cologne	25,911	1.38	5,960	1.79	2.73
Total	1,879,255	100.00	432,229	100.00	100.00

- 1 Performance Budget = 23% of the adjusted target for the budget year
- 2 Parameters are weighted as follows: graduates (50%), gender equality (10%) and third-party funding (40%).
- 3 Graduates are weighted by type of degree (Bachelor and Diploma: 1; Master: 0.5) and duration of study (within the regular duration of study: 2, otherwise: 1). Exception for the FeU Hagen: graduates in part-time studies are given the factor 1.33 within the regular duration of study.

medicine) – parameters and results

Parameters for formula-based allocation ²	Result of all parameters	Result before adjustment		Result after adjustment ⁴	
		in € 1,000	%	in € 1,000	%
Third-party-funding in %	in € 1,000	in € 1,000	%	in € 1,000	%
28.16	68,960	11,582	4.64	4,246	1.70
10.17	52,872	7,128	3.58	2,613	1.31
9.76	40,651	-5,224	-2.62	-1,995	-1.00
6.28	40,114	-4,959	-2.53	-1,960	-1.00
10.56	39,065	-6,035	-3.08	-1,961	-1.00
7.05	34,110	-5,277	-3.08	-1,713	-1.00
7.41	31,690	304	0.22	112	0.08
5.96	28,907	508	0.41	186	0.15
4.49	22,288	3,381	4.11	1,239	1.51
2.52	18,137	647	0.85	237	0.31
2.88	18,129	-3,139	-3.40	-925	-1.00
2.57	17,306	-849	-1.08	-789	-1.00
1.05	12,965	857	1.63	314	0.60
1.15	7,036	1,076	4.15	395	1.52
100.00	432,229	0		0	

- 4 The maximum loss from formula-based allocation is limited to 1.0 % of the adjusted target of each financial year. There is no blanket limitation on profits, which are subject to linear adjustment according to the amount of funds available.

› Performance-oriented budgeting of the Faculty of Medicine for the

University	Budget appropriation 2013		Payment into formula-based allocation ¹	State Gender Equality Act (LGG) ²
	in € 1,000	%	in € 1,000	
U Münster	118,656	17.71	23,731	20.39
U Cologne	113,021	16.87	22,604	17.61
U Bonn	95,085	14.19	19,017	13.10
U Düsseldorf	118,775	17.73	23,755	17.01
TH Aachen	99,631	14.87	19,926	18.08
U Duisburg-Essen	87,922	13.12	17,584	9.91
U Bochum	36,985	5.52	7,397	3.90
Total	670,075	100.00	134,015	100.00

- 1 Corresponds to 20% of relevant budget appropriation for 2013.
- 2 LGG basis = Mean value of registered percentage of posts occupied by female academics in 2008–2011; professorships with female incumbents weighted with factor 5.0.
- 3 Parameters are weighted as follows: research input: 30%; research output: 45%; teaching: 25%.
- 4 Third-party funding basis = registered expenditure in 2009–2011, funding weighted by source (DFG: factor 5; appraised funds: factor 3; non-appraised funds: factor 1), weighting for the latest three-year period: 3:2:1.

financial year 2013 – parameters and results

Parameters for formula-based allocation ³			Payback according to formula-based allocation		Profit / Loss (compared to in-payment)
Research input (third-party funding) ⁴	Research output (PL) ⁵	Teaching ⁶	in € 1,000	%	in € 1,000
19.76	17.38	14.54	24,570	18.33	838
19.35	17.03	16.48	23,679	17.67	1,075
17.09	16.84	13.90	21,541	16.07	2,524
12.99	13.24	15.44	19,394	14.47	-4,361
15.05	12.46	14.43	18,908	14.11	-1,018
10.90	13.66	12.54	16,590	12.38	-995
4.86	9.40	12.66	9,333	6.96	1,936
100.00	100.00	100.00	134,015	100.00	0

- 5 SUM(pJCS) = accumulated Journal Citation Score specific to type of publication (citations in period under observation/publications in period under observation, distinguished by type of publication)
- 6 Teaching basis = IMPP results (examination results) for 2009–2011 and funding for projects to improve the quality of teaching

Source: MWF NRW – Department 232

› Tutorial staff by department* (excluding medicine) and source of funding

Department	Professors**	Academic staff
		regular budget
DEP 01 Protestant Theology	12.0	15.8
DEP 02 Roman Catholic Theology	21.0	23.5
DEP 03 Law	37.5	30.2
DEP 04 Economics	39.3	81.7
DEP 06 Education and Social Studies	43.0	32.8
DEP 07 Psychology and Sport Studies	23.0	50.5
DEP 08 History and Philosophy	61.7	47.1
DEP 09 Philologies	49.0	70.3
DEP 10 Mathematics and Computer Sciences	43.7	49.4
DEP 11 Physics	25.3	70.7
DEP 12 Chemistry and Pharmacy	38.0	105.8
DEP 13 Biology	28.0	56.1
DEP 14 Geosciences	26.8	37.7
DEP 15 Music Department	14.0	2.5
Total	462.2	674.0

- * Without centres and central academic institutions
- ** incl. acting professorships and junior professorships

in 2013 – full-time employee equivalents (data as at 2013-12-31)

Academic staff third-party funds and special funds	Further staff		Total staff
	regular budget	third-party funds and special funds	
10.4	11.5	0.0	49.7
20.6	20.7	1.0	86.8
50.5	33.1	4.6	155.8
100.0	33.8	1.7	256.5
86.8	23.0	4.8	190.4
39.4	34.9	1.4	149.1
39.3	36.2	2.0	186.4
58.0	36.5	1.8	215.5
85.2	17.0	1.5	196.8
84.4	101.4	2.7	284.3
177.7	155.3	10.5	487.3
98.7	95.3	12.9	291.0
54.0	48.7	1.3	168.5
1.0	6.0	0.0	23.5
906.0	653.3	46.0	2,741.5

Source: Cost and performance accounting

› WWU Münster in the 2013 CEWS higher education ranking, based on gender equality

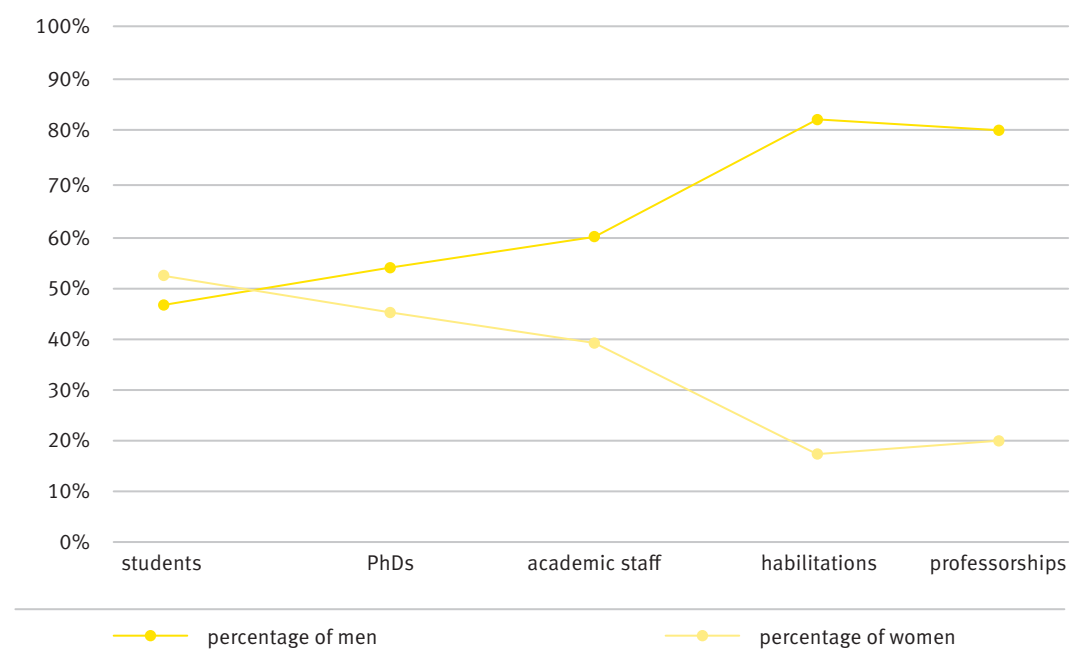
Indicator	Rank	Women in %		Indicators (relative)	
		WWU	Range of all universities examined	percentage of women in relation to the proportion of female students	Range of all universities examined
Students	leading group	52.9	15.0–70.0 ¹	²	²
PhDs	middle group	45.7	14.5–100.0	0.864	0.571–1.408
Academic staff	middle group	39.7	18.8–50.6	0.751	0.458–1.683
Habilitations	bottom group	17.8	8.0–66.7	0.337	0.147–1.188
Professorships	middle group	20.0	0.0–54.5	0.379	0.000–1.061

Indicator	Rank	WWU			Range of all universities examined
		Women in % (2006)	Women in % (2011)	increase in %-Points	
Increase in proportion of women among academic staff from 2006 to 2011	leading group	33.9	39.7	+5.8	-3.8–+35.7
Increase in proportion of women holding professorships from 2006 to 2011	leading group	13.9	20.0	+6.2	-7.3–+27.8

Source: GESIS/CEWS (www.gesis.org/cews/fileadmin/cews/www/download/cews-public17.pdf - WWU graphic based on gender equality ranking in higher education 2011)

- 1 Flat-rate values were set for cases below 15% or above 70%
- 2 The indicator measures the equal distribution of male and female students by subject groups, proportional to the German average. WWU Münster attains a score of 1.008 in a range from 0.757 to 1.098.

› Diagram showing the 'leaky pipeline' relating to percentages of women and men in their academic careers at WWU Münster



Source: WWU graphic based on gender equality ranking in higher education 2011 by CEWS

› Number of female professors in comparison with all universities in NRW (excluding medicine) – parameter gender equality in the performance-based budgeting for the financial year 2013

Higher Education Institution	Junior professorships		Professorships*		Juniorprofessorships and Professorships		Women in %	
	2011 in total	female	2011 in total	female	2011 in total	female	HEI	NRW in total
U Paderborn	12	3	196	56	208	59	28.37	10.08
U Cologne	27	9	413	101	440	110	25.00	8.89
U Wuppertal	18	5	234	55	252	60	23.81	8.46
U Bielefeld	19	8	250	56	269	64	23.79	8.46
U Siegen	10	2	246	56	256	58	22.66	8.05
FeU Hagen	0	0	78	17	78	17	21.79	7.75
U Bochum	49	20	363	69	412	89	21.60	7.68
U Münster	32	11	389	79	421	90	21.38	7.60
U Duisburg-Essen	13	6	359	72	372	78	20.97	7.45
U Dortmund	15	3	272	55	287	58	20.21	7.18
U Düsseldorf	6	1	176	33	182	34	18.68	6.64
TH Aachen	32	12	330	36	362	48	13.26	4.71
U Bonn	16	3	388	46	404	49	12.13	4.31
DSH Cologne	1	0	25	2	26	2	7.69	2.73
Total	250	83	3,719	733	3,969	816	20.56	100.00

* Professorships = full-time university professorships and professors at research universities

Source: MIWF NRW – Department 111

› Number of female academic staff in qualification positions in 2013 by department (excluding medicine)

Department	Number		Women in %
	Total	female	
DEP 01 Protestant Theology	22	7	31.82
DEP 02 Roman Catholic Theology	62	33	53.23
DEP 03 Law	160	73	45.63
DEP 04 Economics	276	64	23.19
DEP 06 Education and Social Studies	175	92	52.57
DEP 07 Psychology and Sport Studies	122	74	60.66
DEP 08 History and Philosophy	107	43	40.19
DEP 09 Philologies	155	103	66.45
DEP 10 Mathematics and Computer Sciences	194	32	16.49
DEP 11 Physics	220	48	21.82
DEP 12 Chemistry and Pharmacy	410	147	35.85
DEP 13 Biology	209	105	50.24
DEP 14 Geosciences	103	42	40.78
DEP 15 Music Department	1	1	100.00
Departments in total	2,216	864	38.99
Other central institutions	207	108	52.17
WWU in total	2,423	972	40.12

* Academic staff on temporary posts in the salary grades A13H, A14, A15, C01, E12, E13, E13U, E14, E15, E15U

Source: Gender equality office (data as at 2013-12-31)

› Appointment procedures completed in 2013

Department	Appointments to WWU				
	Total number of appointments	of which			Female
		Type of professorship			
		W3	W2	W1	
DEP 01 Protestant Theology	1	1	0	0	0
DEP 02 Roman Catholic Theology	2	1	1	0	0
DEP 03 Law	1	1	0	0	1
DEP 04 Economics	5	1	2	2	2
DEP 05 Medicine	6	6	0	0	1
DEP 06 Education and Social Studies	8	1	4	3	0
DEP 07 Psychology and Sport Studies	2	1	0	1	2
DEP 08 History and Philosophy	3	0	2	1	1
DEP 09 Philologies	3	2	0	1	3
DEP 10 Mathematics and Computer Sciences	6	1	2	3	1
DEP 11 Physics	2	1	0	1	1
DEP 12 Chemistry and Pharmacy	3	0	3	0	2
DEP 13 Biology	0	0	0	0	0
DEP 14 Geosciences	0	0	0	0	0
DEP 15 Music Department	2	0	2	0	0
Not assigned to a department	0	0	0	0	0
WWU in total	44	16	16	12	
Female	14	5	5	4	

Appointments to WWU		Negotiations with WWU professors on their remaining in office					
of which		Total number of procedures	of which				Female
Foreign nationality	Appointed from abroad		Outcome: staying at WWU	Outcome: leaving for another university	Type of professorship		
					W3	W2	
0	1	0	0	0	0	0	0
0	1	0	0	0	0	0	0
0	0	3	2	1	3	0	2
1	2	1	1	0	1	0	1
0	0	2	1	1	2	0	1
0	0	2	1	1	0	2	1
0	0	1	1	0	0	1	0
1	0	2	1	1	0	2	0
0	0	2	2	0	2	0	1
0	1	2	1	1	0	2	1
0	1	2	1	1	1	1	1
1	0	2	0	2	0	2	1
0	0	1	0	1	0	1	1
0	0	2	1	1	1	1	1
0	0	0	0	0	0	0	0
0	0	0	0	0	0	0	0
3	6	22	12	10	10	12	
1	1	11	7	4	6	5	

Source: Dept. 3

› Number of scheduled retirements of professors in 2013 to 2025,

Department	2013	2014	2015	2016
DEP 01 Protestant Theology	1	-	1	-
DEP 02 Roman Catholic Theology	1	-	-	-
DEP 03 Law	2	-	1	3
DEP 04 Economics	4	-	-	-
DEP 05 Medicine	8	3	7	5
DEP 06 Education and Social Studies	-	-	-	2
DEP 07 Psychology and Sport Studies	-	1	-	2
DEP 08 History and Philosophy	1	-	4	1
DEP 09 Philologies	1	1	1	3
DEP 10 Mathematics and Computer Sciences	1	-	-	1
DEP 11 Physics	1	-	2	-
DEP 12 Chemistry and Pharmacy	3	1	2	2
DEP 13 Biology	1	-	-	2
DEP 14 Geosciences	-	1	1	1
DEP 15 Music Department	-	2	-	-
WWU in total	24	9	19	22

by department

2017	2018	2019	2020	2021	2022	2023	2024	2025	Total
-	-	-	2	1	-	2	1	-	8
-	1	1	2	1	1	-	1	2	10
2	1	3	1	-	-	2	-	-	15
1	-	1	-	1	1	1	4	2	15
3	4	1	6	3	7	0	2	6	55
1	1	1	1	1	3	3	2	1	16
-	-	-	-	1	-	1	-	2	7
2	2	2	3	3	1	1	2	5	27
2	2	1	1	1	1	1	2	2	19
1	2	-	-	2	-	1	2	1	11
2	1	1	-	1	1	-	1	2	12
-	2	2	-	1	2	-	1	-	16
1	1	2	2	-	-	1	-	1	11
-	-	-	1	-	2	1	-	3	10
-	1	2	-	1	1	1	1	-	9
15	18	17	19	17	20	15	19	27	241

budget and personnel // Source: Dept. 3



Buildings

› Main useable areas by department* (excluding medicine) in 2009–2013 in m²

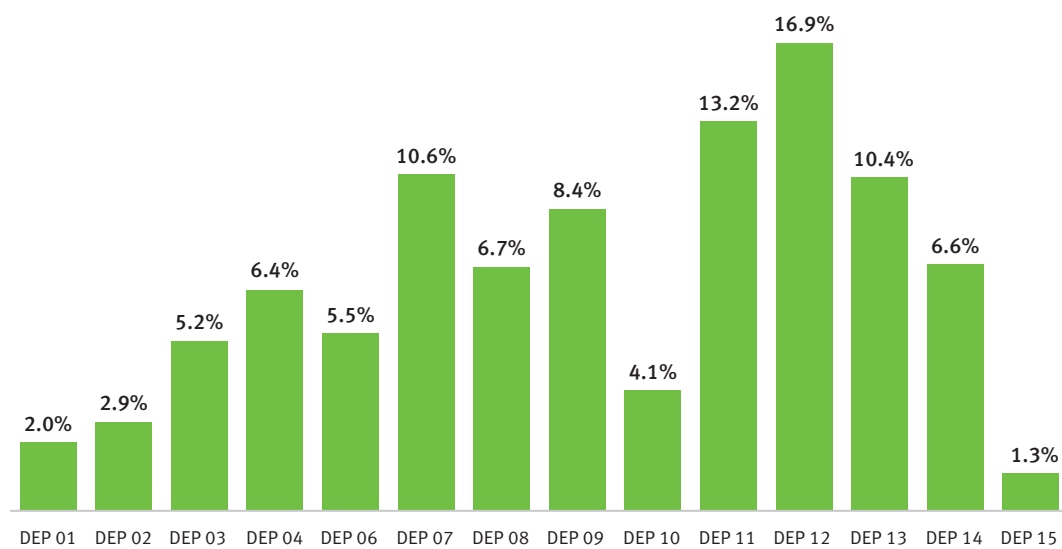
Department	2009	2010	2011	2012	2013
DEP 01 Protestant Theology	3,968	3,995	3,995	3,714	3,657
DEP 02 Roman Catholic Theology	4,800	4,754	4,754	4,719	5,269
DEP 03 Law	9,049	9,181	9,181	9,360	9,419
DEP 04 Economics	12,539	12,249	12,164	11,586	11,715
DEP 06 Education and Social Studies	8,605	9,001	9,107	9,922	9,938
DEP 07 Psychology and Sport Studies**	19,790	18,905	19,192	19,067	19,272
DEP 08 History and Philosophy	11,593	11,904	11,904	12,789	12,202
DEP 09 Philologies	16,018	16,502	16,066	15,004	15,270
DEP 10 Mathematics and Computer Sciences	7,282	7,742	7,742	7,907	7,537
DEP 11 Physics	22,113	22,037	22,172	23,926	24,038
DEP 12 Chemistry and Pharmacy	28,931	31,410	31,199	31,478	30,730
DEP 13 Biology	19,269	19,014	19,045	19,247	18,873
DEP 14 Geosciences	12,126	11,190	11,171	11,432	12,070
DEP 15 Music Department	2,133	2,133	2,133	2,133	2,294
WWU in total	178,216	180,017	179,825	182,285	182,284

Source: Cost and performance accounting, Dept. 4

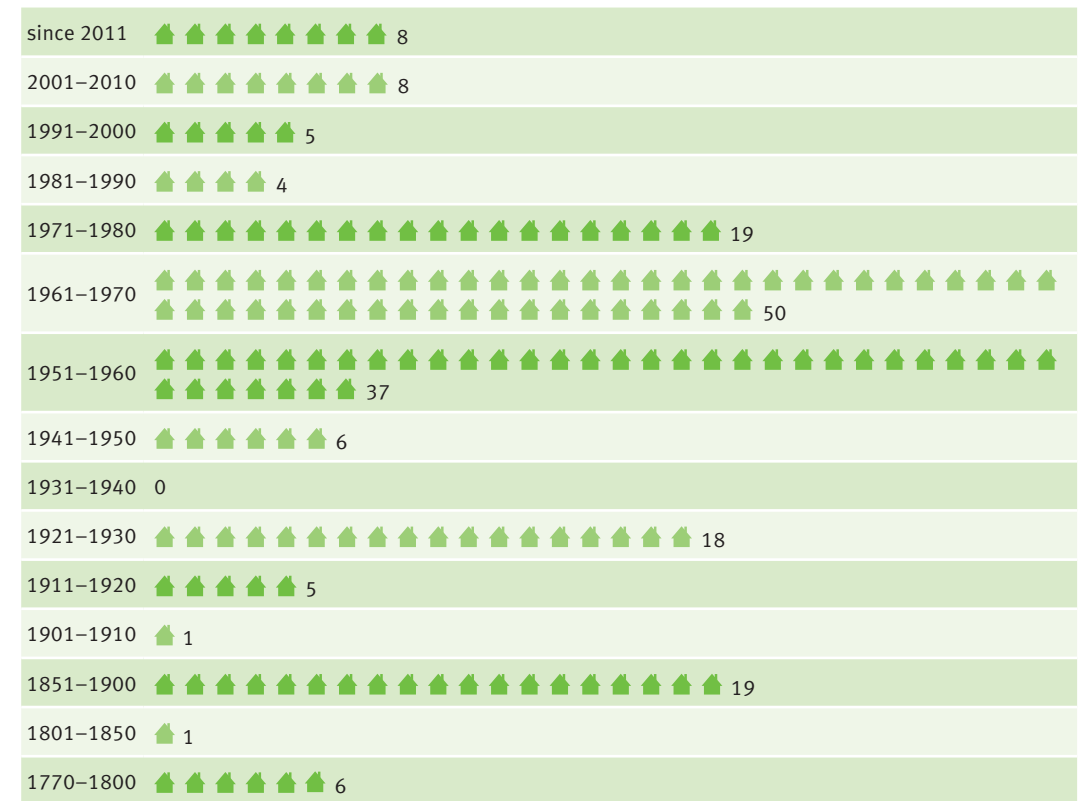
* Without centres and central academic institutions

** Incl. sports facilities

› Share of main useable area by department at WWU in 2013



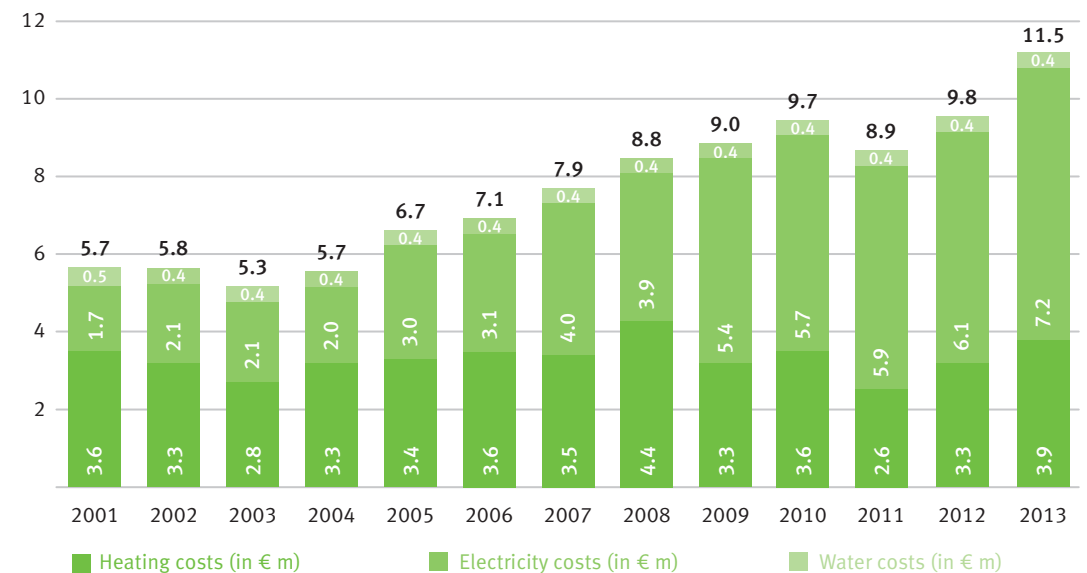
› Building stock* of WWU (excluding medicine) by year of construction



Source: Dept. 4

* excluding rents

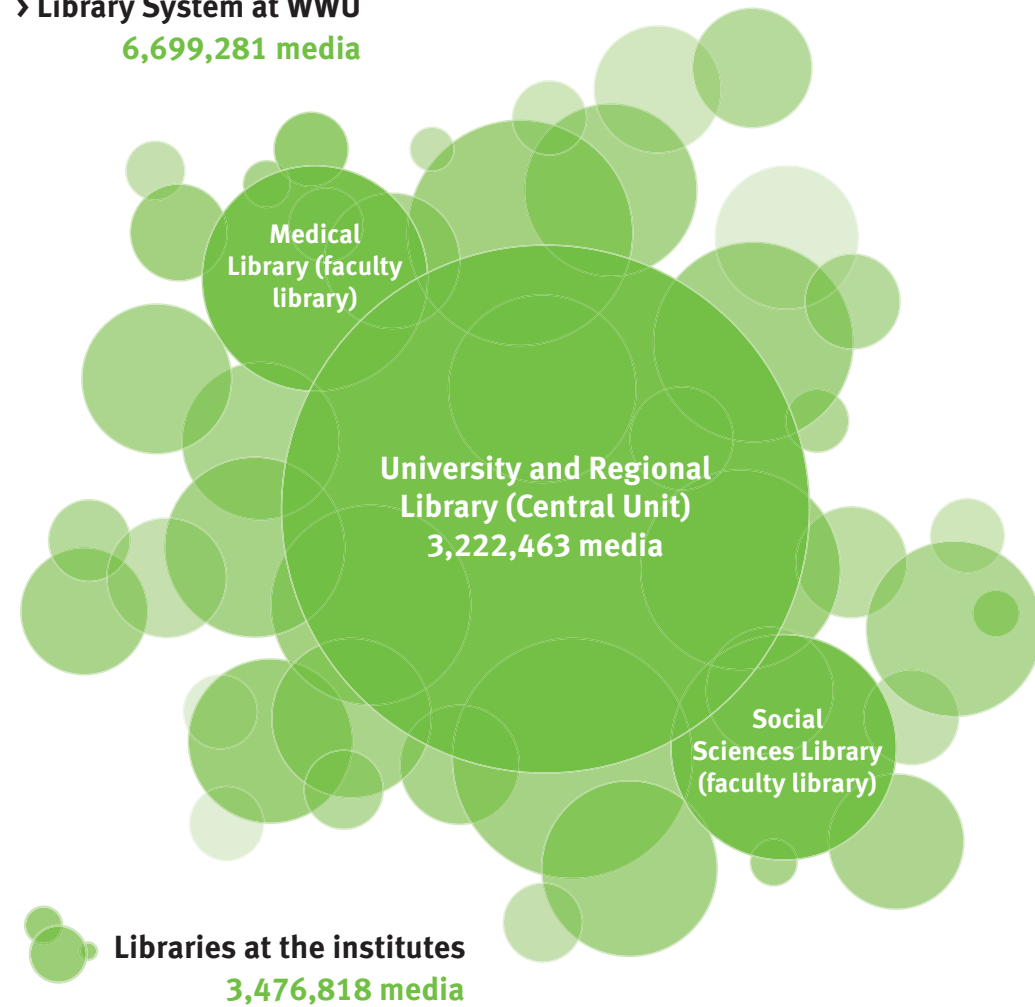
› Development of energy costs at WWU (excluding medicine) in the years from 2001–2013 (in € m)



Source: Dept. 4 (Preliminary result as at February 2014)

University and Regional Library (ULB)

› Library System at WWU
6,699,281 media



Number of libraries at the institutes	108
Libraries with stocks of more than 100,000 units	9
Libraries with stocks from 50,001 to 100,000 units	13
Libraries with stocks from 10,001 to 50,000 units	49
Libraries with stocks of fewer than 10,000 units	37

Source: ULB as at 2013-12-31

Learning and Working in the ULB

› Workspace

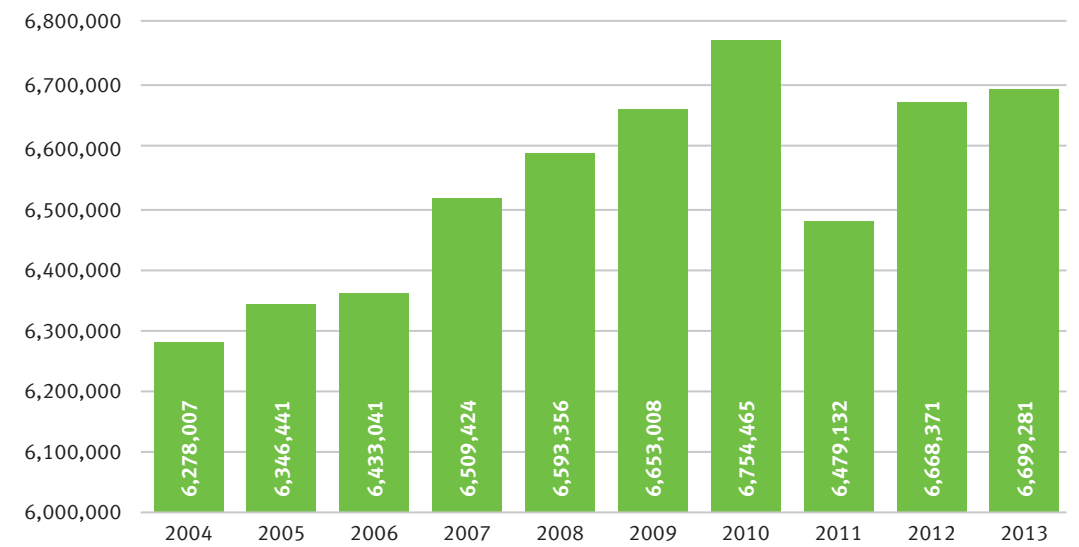
1,648

supply at ULB

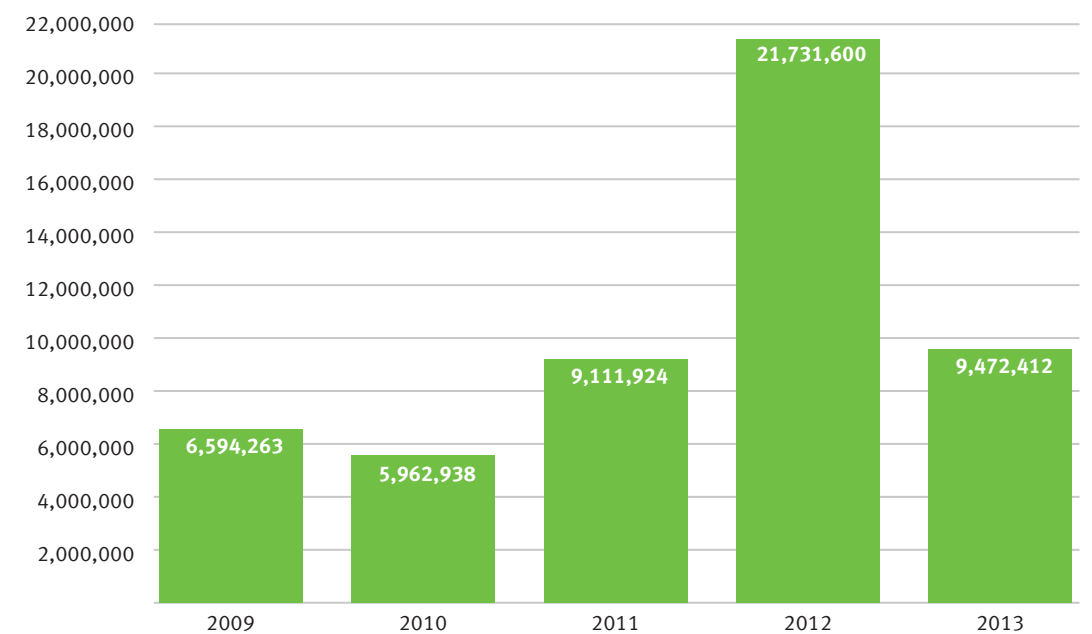
3,839

supply at libraries at the institutes

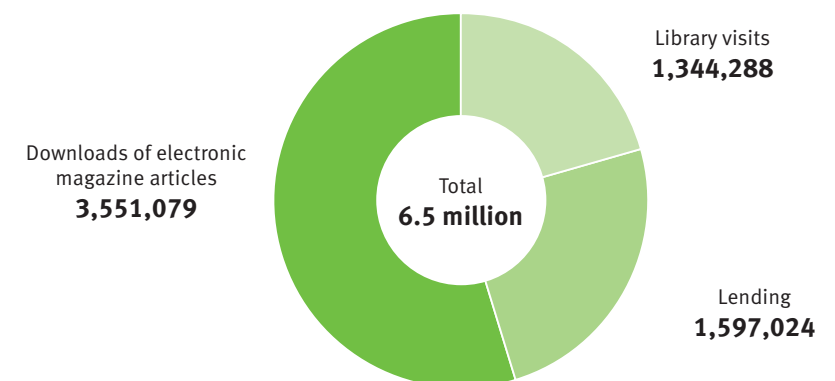
› Development of total media stocks 2004–2013



› Use of ULB catalogue 2009–2013



› Use of ULB stocks in 2013



Data Processing Centre

Structural Data of the Data Processing Centre (ZIV) in 2013

As at 2013-12-31 (change over previous year in percent)

› Communication network

64,564

Net supplies (WWU: 36,260; UKM: 26,576; Academy of Fine Arts Münster: 342; others: 1,254) **+3.7%**

37,357

Registered end systems **+5.9%**

338

Buildings developed **+2.1%**

~307 km

Fibreglass wiring **+6.2%**

1,920

WiFi access points **+28.9%**

1,714 TB

Data transfer to the internet via DFN per year **+1.2%**

553

mobile phones/smartphones **+4.5%**

2,261

TC/AVM orders per year **+21.8%**

21,522

analogue/digital telephones **+2.3%**

1,024,600

External connections in total per month **-8.4%**

5,034

Incidents solved in the data network (NOC) per year **+1.0%**

568

Security-relevant incidents (CERT) per year **+18.3%**

› Central systems

73,607

Active user names/identifications **+7.0%**

~1.15 m

E-mails per day **-4.2%**

~13 GB

Daily mail data volume (on weekdays) **+0%**

92%

Rate of blocked spam mails **+2.2%**

120

Physical server systems operated **+0%**

450

Virtual server systems operated **+18.4%**

1,097 TB

Data volume TSM backup **+1.9%**

3,452 GB

Data volume of the central web presentation at WWU **+25.6%**

79.3%

Utilization HPC system PALMA (290 compute nodes with 3,528 cores) **-6.9%**

› Applications / Tasks and Service

177,841

Number of print jobs (with ca. 2m pages per year) **-26.9%**

~6,500

ZIVline advice (hotline) per year **+0%**

3,277

participants in software training per year **-2.8%**

268

Number of software courses offered per year **-4.6%**

Further data and updated figures available at www.uni-muenster.de/ZIV/en/Fakten/Zahlen_Fakten.html

Glossary

› List of Abbreviations

AvH	Alexander von Humboldt	FOR	Research Units (DFG funding programme)	MEd, G	Master of Education for teaching at primary school
AVM	Audiovisual media	FU	Freie Universität Berlin	MEd,	
BA	Bachelor of Arts	GB	Gigabyte	GyGe	Master of Education for teaching at grammar schools and comprehensive schools
BA–2 HF	Bachelor with two main subjects, also possible as a teaching degree for grammar schools and comprehensive schools	Gesis	Leibniz Institute for the Social Sciences	MEd,	
BA KJ (G)	Teaching degree for primary school	HPC	High Performance Computing	HRGe	Master of Education for teaching at elementary schools, secondary modern schools, comprehensive schools
BA KJ (HRG)	Teaching degree for certain secondary schools (elementary school, secondary modern school, comprehensive school)	HU	Humboldt University Berlin	MIWF	Ministry of Innovation, Science and Research of the State of North Rhine-Westphalia
BLB	Department of Buildings and Real Estate Services of the State of North Rhine-Westphalia	IMPP	Institute for the Coordination and Organization of Medical and Pharmaceutical Examinations	NC	Numerus clausus (Restrictions on admissions)
BMBF	Federal Ministry of Education and Research	IT.NRW	Landesamt für Datenverarbeitung und Statistik (State IT and Statistics Office for North Rhine-Westphalia)	NOC	Network Operating Centre
CERT	Computer Emergency Response Team	KIT	Karlsruhe Institute for Technology	NRW	Federal State of North Rhine-Westphalia
CEWS	Centre of Excellence Women and Science	LA	Teaching degree	PL	Publication
CHE	Centre for Higher Education Development	LA BK	Teaching degree for vocational school (course of study being phased out)	SPP	Priority Programmes (DFG funding programme)
DEP	Faculty/Department	LA GHR,		TB	Terabyte
Dept. 3	University administration, Dept. 3: Personnel Department/Human Resources	G	Teaching degree for primary school (course of study being phased out)	TH	Technical University
Dept. 4	University administration, Dept. 4: Facility Management, Occupational Safety and Environmental Protection	LA GHR,		TC	Telecommunications
Dept. 5	University administration, Dept. 5: Finance and Controlling	HRGe	Teaching degree for elementary school, secondary modern school, comprehensive school (course of study being phased out)	TRR	Collaborative Research Centre/ Transregio (DFG funding programme)
DFG	German Research Foundation	LA Gym/		TSM	Tivoli Storage Manager
DFN	German National Research and Education Network	Ges	Teaching degree for grammar schools and comprehensive schools (course of study being phased out)	TU	Technical University
DSH	German Sports University Cologne	LGG	Gender Equality Act (North Rhine-Westphalia)	U	University
ERC	European Research Council	m	Million	UKM	University Hospital Münster
EU	European Union	M.A.	Magister Artium	ULB	University and Regional Library
EXC	Cluster of Excellence	MA	Master of Arts	WLAN	Wireless Local Area Network (WiFi)
FB	Fachbereich	MEd,		WS	Winter semester
FeU	Distance Learning University	BK/2F	Master of Education for teaching at vocational school (general education)	WWU	Westfälische Wilhelms-Universität Münster
FH	University of Applied Science	MEd, BK/		ZB	Branch library
		BAB/BB	Master of Education for teaching at vocational school (professional education)	ZIV	Data Processing Service Centre
				ZVS	Central Office for University Admissions

› Definitions

The definitions given below refer to the data contained in this Statistical Yearbook. Their purpose is to make the Yearbook easier to understand. They make no claim to be universally applicable.

Academic success

To measure academic success, the number of final examinations passed in a certain year at a point in time (t) are correlated with the number of new students in this course at the point in time (t – prescribed length of study).

Academic year

Winter semester and the following summer semester (e.g. academic year 2009 = winter semester 2008/09 + summer semester 2009).

Affiliated institutes

Affiliated institutes are academic institutes which are legally and economically independent and which work closely together with a higher education institution in a special field. The precondition for being granted the right to bear the title of an institute at a university is that the institute meets university standards in its work.

Budget year

Corresponds to the calendar year (January 1 to December 31).

Capacity utilization

Proceeding from the number of students within the regular duration of study, the entire amount of teaching taken in each department – i.e. by students taking courses (services) assigned, or not, to that department – is calculated (measured in hours per week per semester) and expressed in relation to the teaching available. The calculation is made using the relevant standard curriculum percentage values (q.v.). The process is carried out for all subjects/departments at the University, as well as for the University in total (excluding medicine).

Cluster of Excellence

(DFG funding programme)

The aim of the Clusters of Excellence is to establish at German universities research and training institutes which are internationally visible and competitive, at the same time making possible the networks and cooperation which are imperative in the academic world. The Clusters of Excellence should be important components in a university's strategic and thematic planning, sharpening its profile and requiring priorities to be set. In addition, they should create excellent training and career conditions for junior academics.

Collaborative Research Centre

(DFG funding programme)

Collaborative Research Centres are funded by the German Research Foundation as a means of creating focuses at universities through the temporary setting up of centres of excellence. The aims of the Collaborative Research Centres are in particular the promotion of interdisciplinary cooperation and of junior academics. As a rule they are funded for twelve years. An appraisal is undertaken after every three or four years of funding.

Course of study

This is determined by the combination of subject studied and desired degree examination and is regulated by examination and study regulations. A course of study can require studying several subjects. A course of study can also be one leading to a PhD.

Cross-registered students

Students who register to study at Münster University in addition to their studies at another university. Evidence of eligibility for university admission must be provided.

Current expenditure

The so-called current expenditure (basic state funding) is part of the university's expenditure that the respective federal state provides out of its own budget for the university's main assignments (i.e. teaching and research). It is calculated by adding to the expenditure for current purposes (i.e. personnel costs and material expenses) the assumed social security/insurance contributions for tenured employees (i.e. medical treatment and pensions) then subtracting revenues as well as rents and leases. Current expenditure (basic state funding) does not include investment expenditure.

Final examinations

In counting final examinations, passes in all subjects studied are taken into account when courses comprise several subjects.

First-time enrolments

Students in their first semester who have enrolled at a university for the first time.

Foreign students/graduates

Students or graduates with foreign nationality.

Freshman, freshman

Students who have enrolled at Münster University for the first semester in their subject.

German U15

The German U15 is an affiliation of 15 major universities, strong on research and leaders in medicine, which are jointly committed to improving conditions for academic work, research and teaching.

Graduates

Students who have passed in a course of study through taking the appropriate (final) examinations. Examinations passed in the main subject are counted (headcount).

Graduate School

A graduate school offers PhD courses with intensive supervision and an international orientation. These courses facilitate academic qualifications closely linked to focuses of research.

Guest students

Students who attend individual courses or avail themselves of further education options without wanting to take a final examination. No admissions qualification is necessary.

Main useable area

The main useable area is defined as the sum of the areas typical for the defined purpose and use of a building. It is defined in DIN 277 as part of the net floor space of a building. The main useable area and the ancillary useable area together form the total useable area.

New enrolments

Sum of first-time enrolments and students transferring from another university.

Prescribed duration of study

Comprises the prescribed length of study plus the examination period.

Prescribed length of study

The prescribed length of study is the period of time in which the credits required for registering for final examinations can be gained (in line with the study regulations).

Priority programme (DFG funding programme)

The aim of priority programmes is to give tangible impulses for further developments in research through coordinated funding at various locations for important new topics. The focus is on a new quality of topics, cooperation or methodology ("emerging fields"), added value through cross-disciplinary collaboration (interdisciplinarity) and building up networks. As a rule, a priority programme is funded for six years.

Regular students

People duly enrolled for a course of study. Does not include students currently on leave, cross-registered students, guest students and foreign students attending German language programmes.

Research groups (DFG funding programme)

The research group is a medium-term association of several academics working together on a special research project which, in terms of its thematic and financial scope and its duration, goes beyond the funding possibilities offered by the German Research Foundation's Individual Grants Programme or Priority Programme. The aim of research groups is to help provide the necessary staffing and material resources for a medium-term period – mostly six years – of close cooperation. Research groups often contribute to the establishment of new fields of research.

Research training group (DFG funding programme)

Research training groups are temporary arrangements at universities aimed at supporting junior graduate academics. In research training groups PhD students have the opportunity to carry out their work as part of a coordinated research programme supported by several university teachers. They are integrated into the research work being done by the institutes involved. There is a study programme designed to complement and extend the training group members' individual specializations and structure their cooperation. As a rule, the research and study programme is of an interdisciplinary nature.

Restrictions on admissions

For courses of study in which demand for places regularly exceeds the number of places available, the Ministry of Education can regulate access to such courses at the request of the university. Those wishing to study must then apply through the Foundation for University Admissions (formerly ZVS, Central Admissions Agency) (central selection procedure) or to the university direct (local selection procedure).

Special funding

Special funding is approved and provided by the state of North Rhine-Westphalia for certain defined purposes. As a rule, this funding is used to carry out projects, hire additional staff or buy equipment.

Staff

The university staff includes academic, non-academic and miscellaneous academic staff. The academic staff consists of professors, research staff, artistic staff and teachers for special tasks. The non-academic staff comprises the people working in the central administration, in the administration of the various academic departments, and in the administrative and technical areas of the institutes, chairs and Central Institutions, as well as apprentices. The miscellaneous academic staff includes people who work at the university without having their primary employment there (part-time teaching staff, auxiliary staff).

Standard curriculum value

The so-called standard curriculum value (Curricularnormwert) is a term from legislation relating to capacities offered by universities (Kapazitätsrecht) and is designed to express the differing amounts of teaching provided to students in their courses of study. The higher the proportion of teaching which is held in larger groups (e.g. lectures), the lower the Curricularnormwert, and vice-versa. The Curricularnormwert is an important parameter for determining the teaching capacities for each subject. The changeover to the new BA/MA courses requires a re-evaluation of the system used so far.

Students

In the student statistics a distinction is made between people (headcounts) and total subject courses being studied by all students (statistics relating to courses of study). For the headcount, it is always the registrations for the 1st subject which are determined. In the statistics relating to courses of study all main and secondary subjects are taken into account.

Students transferring from another university

Students who have enrolled at Münster University for the first time, or once again, to begin studying a subject or to study it in a higher semester, and who were previously enrolled at another university.

Subject semester

Semester in which students are enrolled for a certain course. This can include semesters credited from another course or subject. Holiday semesters are not included.

Subject study duration

Number of semesters studied in the subject in which the final examination is taken. Semesters from other courses of study which are recognized for the examination taken are included in the details given.

Summer semester

Period from 01.04. to 30.09. of each year.

Third-party funding

Funds for research and development projects carried out by members of the University as part of their work and financed not with money from the University's budget but from funding provided by third parties. A distinction is made between expenditure from subsidies from the German Research Foundation for Collaborative Research Centres – and expenditure from third-party funding.

Third-party funding personnel

Third-party funding personnel can only be hired for a limited period, i.e. the maximum period being for the approved duration of the project in question. The decisive factor regarding employment criteria is the content of the funding notification from the source of the funding or the funding agreement signed. Contracts covering part-time employment have been converted to full-time jobs, i.e. full-time employee equivalents.

Transregio (DFG funding programme)

Since July 1999 the German Research Foundation has been funding the new Transregio collaborative research centres as an alternative to the collaborative research centres possible until then. Transregios are characterized by having several locations (often two or three). There is a free choice of cooperation partners at and between the locations. The contributions made by the individual cooperation partners must be essential, complementary and synergetic for the aim of the joint research.

University semesters

Total number of semesters completed at universities in Germany (including any changes of subject or university).

Winter semester

Period from October 1 of one year to March 31 of the next.



Imprint

Publisher:

Rector of the Westfälische
Wilhelms-Universität Münster
Schlossplatz 2
48149 Münster

Provision of content:

Planning, Development & Academic Controlling Dept.

Editorial work:

Britta Pohlmann, M.A.
Christian Tusch, M.A. (responsible)
Julia Schmidt, M.A.
Steffen Eisner, M.A

Design:

goldmarie design

Translation:

Ken Ashton

Münster, 2014