

WESTFÄLISCHE
WILHELMS-UNIVERSITÄT
MÜNSTER



WWU statistical yearbook 2012 //



Foreword

Dear Reader,

What influence do rankings have on choosing where to study? Münster University's Prof. Frank Marcinkowski took a closer look at this question in late 2011 with a representative survey of university managements and senates. The result was that rankings have no effect primarily on demand for study places but, rather, are followed closely in the fields of politics and business, where the effects are directly noticeable.

Our aim as the University's management in presenting the key figures and statistics contained in this Statistical Yearbook 2012 is to provide to the wider public an insight into the development of our University – beyond the customary rankings. We do not shy away from comparisons with other universities, and we include such data in this Yearbook.

I do hope you enjoy reading and browsing through this Yearbook and working with it.

Sincerely yours,

Prof. Ursula Nelles
Rector of WWU



"The Statistical Yearbook, presented in the same design as the Yearbook, provides the reader with all the necessary figures and data, explained in detail with the aid of graphic material which is both easy to understand and clearly presented. In other words, there is excellence wherever one looks in Münster – and this excellence is skilfully reproduced in the 2010 Yearbook."

Quotation on the Statistical Yearbook 2010 contained in "German Standards – Exemplary Annual Reports 2011" by the publishers Deutsche Standards EDITIONEN GmbH

profile // 01

Profile of WWU

- › Structure 8
- › Staff 8
- › Buildings 8
- › Budget 9

Research at WWU – “Finger on the Pulse”

- › Institutions 9
- › Third-party funding 2012 10
- › Members on DFG Review Boards 10

Studying and Teaching at WWU – Lively and Successful

- › Study programmes 10
- › Number of students 11
- › Graduates 11

WWU – International and Cosmopolitan

- › Partnerships 11
- › “A Cosmopolitan Outlook” 11

- › comparison with all universities in NRW 23
- › Development of third-party funding expenditure (excluding medicine) by Collaborative Research Centres (CRC) funded by the DFG in comparison with all universities in NRW 23
- › Third-party funding expenditure in the years 2004–2012 24
- › Third-party funding expenditure by Collaborative Research Centres (CRC) funded by the DFG in 2004–2012 24

C. Rankings

- › German universities in the Academic Ranking of World Universities (Shanghai Ranking) 2012 26
- › The 20 German universities with the most research stays funded by the AvH Foundation in the Humboldt Rankings 2012 27
- › The 20 German universities with the highest DFG funding volume – The DFG Funding Atlas 2012 from 2003–2012 28
- › The 20 German universities with the highest DFG funding volume in the DFG Funding Atlas 2012 by scientific discipline 29
- › DFG funding volume by HEI and selected funding programmes in DFG Funding Atlas 2012 30

D. Habilitations

- › The 20 German universities with the highest number of habilitations in the year 2011 32
- › Habilitations by department from 2004–2012 34

E. Doctoral Degrees

- › The 20 German universities with the highest number of doctoral degrees taken in the academic year 2011 34
- › Doctoral degrees by subject groups in comparison with all universities in NRW (excluding medicine) 35
- › Doctoral degrees taken in the main subject in the academic years 2004–2011 by department/subject 36

studying and teaching // 03

A. Number of Students

- › The 20 German universities with the highest number of students in the winter semester 2011/12 40
- › Female students at the 20 German universities with the highest number of students in the winter semester 2011/12 41
- › Development in the number of students, with a breakdown of figures, in each winter semester 42
- › WWU students by department in the winter semester 2012/13 44
- › Number of students from 1910–2012 (average per year) 44

- › WWU students by target degree (in their main subject) 46
- › Students at WWU by department/subject from 2004–2012 47
- › Origin of German students in the winter semester 2012/13 by Federal State where they obtained their general qualification for university entrance 50
- › Regional origin of foreign students in the winter semester 2012/13 by continent 50

B. Number of First-Year Students

- › First-year students at WWU by target degree (in their main subject) 51
- › Number of first-year students 1982–2012 52

C. Capacity

- › Development of capacity utilization (excluding medicine) by department/subject 52

D. Examinations and Graduates

- › The 20 German universities with the highest number of examinations passed (by type of degree) in the academic year 2011 54
- › Graduates by subject groups in comparison with all universities in NRW (excluding medicine) – parameter graduates in the performance-based budgeting for the financial year 2013 56

- › Graduates in their main subject by department/course of study in the academic years 2003–2011 57

- › Number of examinations passed by type of degree 1995–2011 60

- › Number of examinations passed by type of degree in the years 1982–2011 60

E. Duration of Study

- › Average duration of study (median) in selected subjects at WWU in the academic year 2011 in national comparison 62

F. Academic Success

- › Development of academic success by type of degree 63

G. CHE University Ranking 2010–2012

- › Student rating of overall study situation at WWU 64
- › Student assessment of selected aspects of studying and teaching at WWU 65

budget and personnel // 04

- › Budget of WWU (excluding medicine) in the years 2006–2011 68

- › Key data on current basic funding at selected universities (excluding medicine) compared to the rest of the country (“German U15”) 68

- › WWU's cost structure in the financial year 2011 (excluding medicine) 69

- › Performance-oriented budgeting for the financial year 2013 (excluding medicine) – parameters and results 70
- › Performance-oriented budgeting of the Faculty of Medicine for the financial year 2012 – parameters and results 72
- › Tutorial staff by department (excluding medicine) and source of funding in 2012 – full-time employee equivalents 72
- › WWU Münster in the 2011 CEWS higher education ranking, based on gender equality 74
- › Diagram showing the ‘leaky pipeline’ relating to percentages of women and men in their academic careers at WWU Münster 74
- › Number of female professors in comparison with all universities in NRW (excluding medicine) – parameter gender equality in the performance-based budgeting for the financial year 2013 75
- › Number of female academic staff in qualification positions in 2012 by department (excluding medicine) 75
- › Appointment procedures completed in 2012 76
- › Number of scheduled retirements of professors in 2012 to 2025, by department 78

infrastructure // 05

Buildings

- › Main useable areas by department (excluding medicine) in 2008–2012 in m² 82

- › Share of main useable area by department at WWU in 2012 82

- › Building stock of WWU (excluding medicine) by year of construction 83

- › Development of energy costs at WWU (excluding medicine) in the years from 2000–2012 (in € m) 83

University and Regional Library (ULB)

- › Library system at WWU 84

Learning and Working in the ULB

- › Workspace 84

- › Development of total media stocks 2003–2012 85

- › Use of ULB catalogue 2008–2012 85

- › Use of ULB stocks in 2012 85

Data Processing Center

- › Structural Data of the Data Processing Center (ZIV) in 2012 86

- › Communication network 86

- › Central systems 87

- › Applications / Tasks and Service 87

glossary // 06

- › List of Abbreviations 90

- › Definitions 92

- › Editorial Information 96



Profile of WWU

› Structure

15

departments

› Staff

6,650

(incl. medicine, incl. third-party funding staff, excluding assistants and lecturers)

549

professors

4,200

research assistants

1,900

further staff

7,000

additional employees at Münster University Hospital

› Buildings

218

university buildings, integrated into the city of Münster

264,579 m²

main useable area (excluding medicine)

› Budget

€ 557,700,000

total budget of WWU in 2012

€ 395,900,000

of which WWU budget (excluding medicine)

€ 161,800,000

of which budget of the Faculty of Medicine

Research at WWU – “Finger on the Pulse”

› Institutions

2

Cluster of Excellence

7

Collaborative Research Centres with WWU spokesperson

2

Priority Programmes (Coordination)

3

Research Units (Coordination)

3

Research Training Groups

3

International Research Training Groups

3

Marie Curie Initial Training Networks

6

Internal Graduate Schools

7

Groups of Young Academics

2

Research Schools

1

International Max Planck Research School

1

Max Planck Institute

1

Fraunhofer Institute (branch)

1

Leibniz Institute

25

academic centres

14

affiliated institutes

› Third-Party Funding 2012

€ 123,700,000

Annual increase approx. 9% since 2008

› Members on DFG Review Boards

13

WWU in total

4

Natural Sciences

5

Life Sciences

4

Social Sciences and Humanities

Studying and Teaching at WWU – Lively and Successful

› Study programmes

› 120

subjects

› 250

courses of study

› Number of students

40,787

students (winter semester 2012/13)

53.5%

women

› Graduates

~ 7,100

degrees in 2011

58.8%

women

WWU – International and Cosmopolitan

› Partnerships

› 550

partnership agreements with universities and academic institutions all over the world: from nearby Enschede in the Netherlands to Beijing in China

Focus on Latin America, southern and eastern Asia and the Baltic States

International exchange programmes

› “A Cosmopolitan Outlook”

~ 700

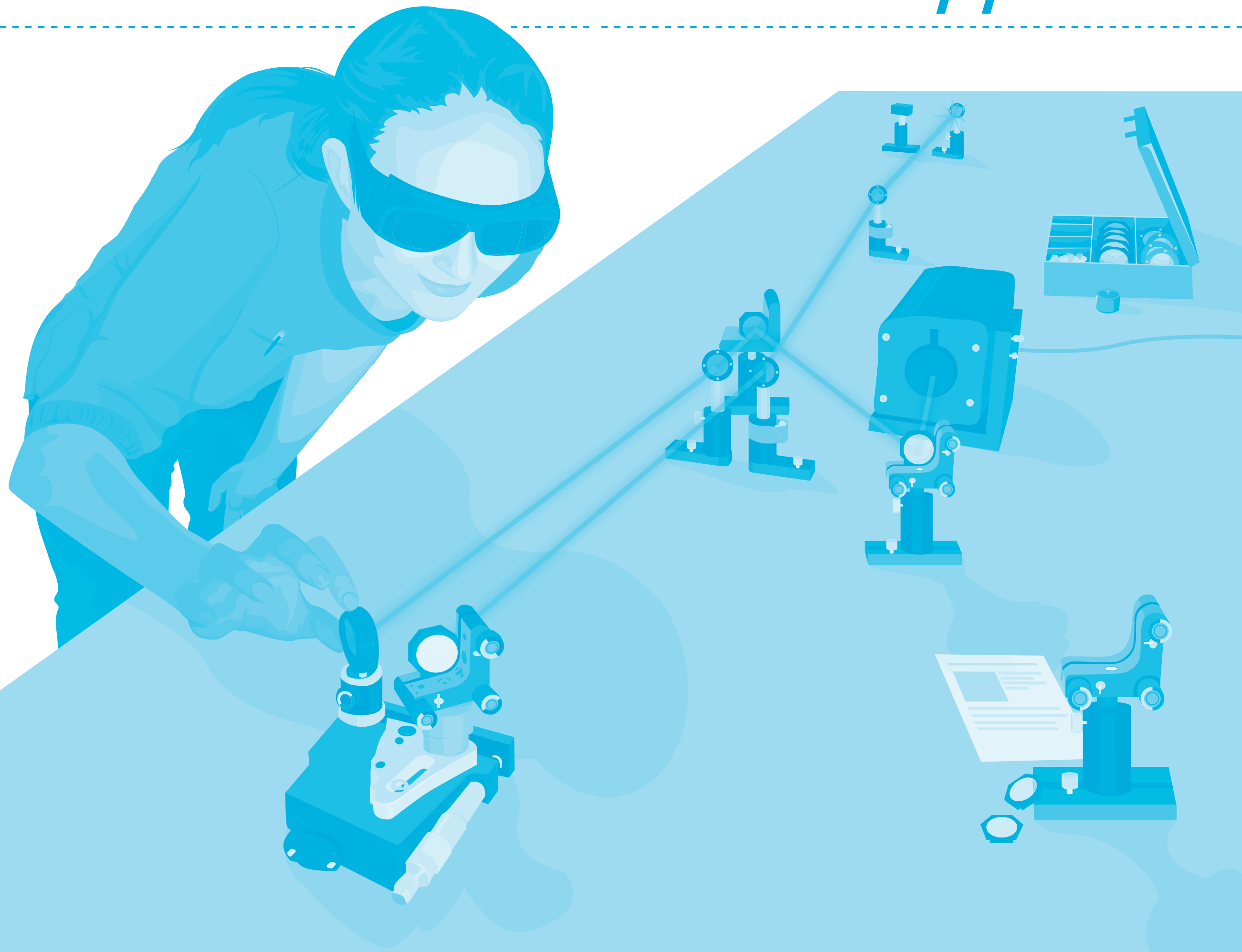
visiting academics

1,000

WWU students abroad

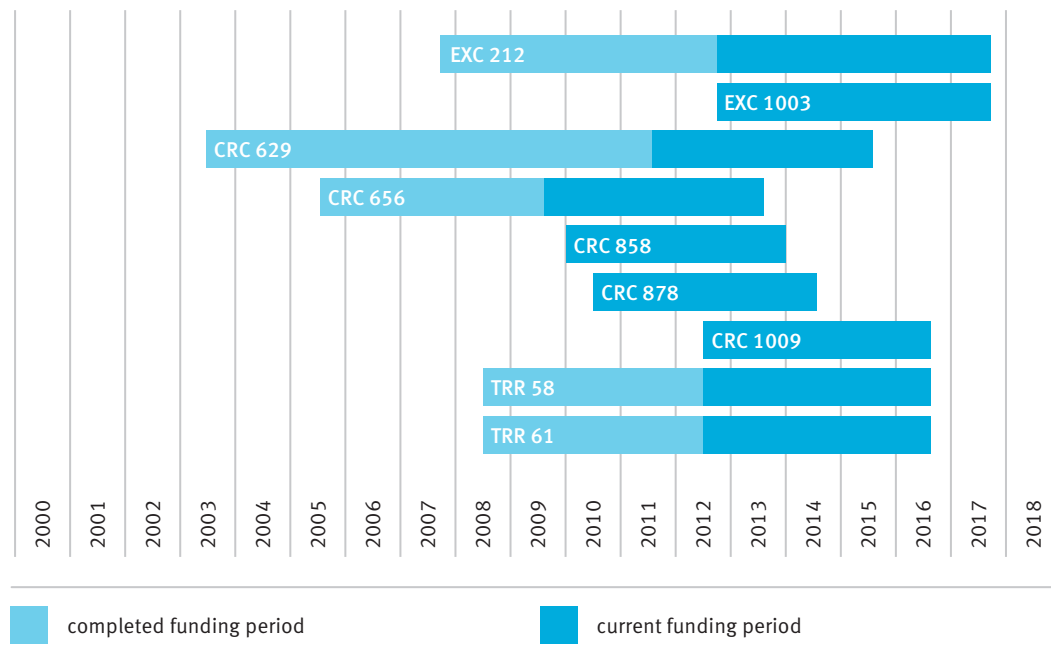
7.9%

foreign students (3,236), especially from Turkey, eastern Europe and southern and eastern Asia



A. Research Profile

› Funding periods for the Cluster of Excellence and the Collaborative Research Centres coordinated by WWU



› Important projects for WWU's research profile

Type	Source of funding	Title	Funding period (beginning and end)	Funding level (in the current project phase)
Cluster of Excellence	DFG	EXC 212 Religion and Politics in Pre-Modern and Modern Cultures (with integrated Graduate School)	01.11.07–31.10.17	€ 33,733,000 (for 5 years)
		EXC 1003 Cells in Motion – CiM: Imaging to Understand Cellular Behaviour in Organisms (with integrated Graduate School)	01.11.12–31.10.17	€ 33,832,800 (for 5 years)
Collaborative Research Centres	DFG	CRC 629 Molecular Cell Dynamics: Intracellular and Cellular Migration	01.07.03–30.06.15	€ 9,000,000 (for 4 years)
		CRC 656 Molecular Cardiovascular Imaging (MoBiI) – from Mouse to Man	01.07.05–30.06.13	€ 10,000,000 (for 4 years)
		CRC 858 Synergetic Effects in Chemistry – from Additivity towards Cooperativity	01.01.10–31.12.13	€ 8,611,148 (for 4 years)
		CRC 878 Groups, Geometry and Actions	01.07.10–30.06.14	€ 9,000,000 (for 4 years)
		CRC 944 Physiology and Dynamics of Cellular Microcompartments (participation)	01.01.11–31.12.14	€ 8,500,000 (total for 4 years)

Continued ›

Type	Source of funding	Title	Funding period (beginning and end)	Funding level (in the current project phase)
Collaborative Research Centres	DFG	CRC 1009 Breaking Barriers – Immune Cells and Pathogens at Cell/Matrix Barriers	01.07.12–30.06.16	€ 8,000,000 (for 4 years)
		TRR 3 Mesial Temporal Lobe Epilepsies (participation)	01.07.01–30.06.12	€ 12,025,500 (total for 4 years)
		TRR 34 Pathophysiology of Staphylococci in the Post-Genome Era (participation)	01.07.06–30.06.14	€ 8,000,000 (total for 4 years)
		TRR 58 Fear, Anxiety, Anxiety Disorders	01.07.08–30.06.16	€ 10,000,000 (for 4 years)
		TRR 61 Multilevel Molecular Assemblies – Structure, Dynamics and Functions	01.07.08–30.06.16	€ 7,000,000 (for 4 years)
		TRR 128 Initiating/Effector versus Regulatory Mechanisms in Multiple Sclerosis – Progress towards Tackling the Disease (participation)	01.07.12–30.06.16	€ 3,500,000 (participation by WWU for 4 years)
Priority Programmes	DFG	SPP 1399 Host-Parasite Coevolution – Rapid Reciprocal Adaptation and its Genetic Basis	01.08.09–31.07.15	€ 5,000,000 (total for 3 years)
		SPP 1409 Public Understanding of Fragile or Conflicting Scientific Evidence	01.07.09–30.06.15	€ 2,800,000 (total for 3 years)
Research Units	DFG	FOR 964 Calcium Signaling via Protein Phosphorylation in Plant Model Cell Types during Environmental Stress Adaption	01.07.08–30.06.14	€ 910,000 (participation by WWU for 3 years)
		FOR 1041 Germ Cell Potential	01.05.08–30.04.14	€ 2,000,000 (participation by WWU for 3 years)
		FOR 1209 Basic Theoretical Questions of Justifying Norms in Medical Ethics and Biopolitics	01.01.10–31.12.13	€ 4,600,000 (total for 4 years)
Reinhart Koselleck Project	DFG	Prof. Oberleithner, Medicine (Dynamic Nanomechanics of a Living Cell)	2010–2015	€ 750,000
Grants for Equipment (selection)	DFG	WO 851/1 Roman Inquisition and Index Congregation in the Modern Period	01.01.02–31.12.13	€ 892,700
	Academy of Sciences	Novum Testamentum Graecum. Editio critica maior (ECM)	01.01.08–31.12.30	€ 4,409,044
ERC Advanced Investigators Grant	EU	Prof. Cuntz, Mathematics	2010–2015	€ 2,500,000
		Prof. Raz, Medicine	2010–2015	€ 1,960,000
		Prof. Erker, Chemistry	2011–2016	€ 2,000,000
ERC Starting Grant	EU	Prof. Lei, Physics	01.09.09–31.08.14	€ 1,400,000
		Prof. Glorius, Chemistry	2010–2015	€ 1,500,000
		Dr. Weigand, Chemistry	2012–2017	€ 1,400,000

Continued ›

› Coordinated programmes of postgraduate education

Type	Source of funding	Title	Funding period (beginning and end)	Funding level (in the current project phase)
Humboldt Professorship	AvH-Foundation/BMBF	Prof. Weiss, Mathematics	2012–2017	€ 3,500,000
Large-Scale Integrating Project	EU	Imaging Neuroinflammation in Neurodegenerative Diseases (INMiND)	01.03.12–28.02.17	€ 11,998,478 (total for 5 years)
Individual Grants (selection)	BMBF	Oxygen-Permeable Ceramic Membranes for Coal-Fired Power Plants (MEM-OXYCOAL)	01.05.08–30.04.12	€ 500,215
		Joint Research Project KATRIN: Measuring the Neutrino Mass from Tritium Beta Decay	01.07.08–30.06.15	€ 810,000 (for 4 years)
		Mercury Radiometer and Thermal Infrared Spectrometer (MERTIS) for the BepiColombo Mission – Phase C2/D	01.03.09–28.02.13	€ 11,392,200
		Joint Research Project: Preparation, Evaluation and Application of Randomized Laser Systems. Subproject: New Optical Components of Nanoparticles	01.05.09–30.04.12	€ 847,000
		BMBF-FSP 201: ALICE – Completion, Calibration and Implementation of the TRD, and Examination of Highly Concentrated Quark-Gluon Plasma	01.07.09–30.06.12	€ 1,246,000
		National Research Platform for Zoonoses	2009–2015	€ 600,000 (for 3 years)
		Chitosan/Copper-Nanoparticles and Biopesticides for Knowledge-based Plant Protection, Subproject Münster (CuChi-BCA)	2011–2016	€ 1,065,524
		Establishment of a Centre for Islamic Theology	2011–2017	€ 3,300,000
		Mechanisms of Interaction between Nanoparticles and Cells (MINAC)	2011–2014	€ 2,700,000
		Sustainable Land Management and Adaptation Strategies to Climate Change for the Western Siberian Corn-Belt (SASCHA)	2011–2016	€ 1,800,000 (participation by Münster)
		Innovative Electrochemical Supercapacitors (IES)	2012–2015	€ 1,500,000 (participation by Münster)
		SafeBatt – Active and Passive Measures for Intrinsically Safe Lithium-Ion Batteries	01.07.12–30.06.15	€ 3,936,208 (for 3 years)
		MEET Hi-END – Materials and Components for Batteries with High Energy Density	01.10.12–30.09.15	€ 2,815,491 (for 3 years)
		Insider – Development and Design of a Novel Anion Intercalating Battery System	01.10.12–31.12.16	€ 2,835,938 (for 4 years and 3 month)
		BMU	Fleet-Test Electric Mobility	01.07.08–30.06.12
	Deutsche Telekom Foundation	Establishment and Funding of a Professorship for Pre-School/Early Education in Natural Sciences	01.08.08–31.07.14	€ 1,032,000

This summary contains research programmes funded up to and including 2012.

Type	Source of funding	Title	Funding period (beginning and end)	Funding level (in the current project phase)		
Research Training Groups	DFG	RTG 1409 Molecular Interactions of Pathogens with Biotic and Abiotic Surfaces	01.10.06–30.09.15	€ 4,160,000 (for 4.5 years)		
		RTG 1712 Trust and Communication in a Digitized World	01.04.12–30.09.16	€ 3,598,235 (for 4.5 years)		
		RTG 1886 Literary Form – Historical and Cultural Formations of Aesthetic Models	01.10.13–31.03.18	€ 2,066,825 (for 4.5 years)		
International Research Training Groups	DFG	IRTG 1143 Complex Functional Systems in Chemistry: Design, Development and Applications	01.01.06–31.12.14	€ 5,000,000 (for 4.5 years)		
		IRTG 1498 Semantic Integration of Geospatial Information	01.10.08–28.02.13	€ 1,686,228 (for 4.5 years)		
		IRTG 1549 Molecular and Cellular Glyco-Sciences	01.10.09–31.03.14	€ 3,500,000 (for 4.5 years)		
Marie Curie Initial Training Network	EU	Mechanisms of Mineral Replacement Reactions (DELTA-MIN)	01.09.08–31.08.12	€ 3,109,822 (for 4 years)		
		Diasporic Constructions of Home and Belonging (CoHaB)	01.11.11–31.10.15	€ 3,354,340 (for 4 years)		
		Ion Transport Proteins in Control of Cancer Cell Behaviour (IONTRAC)	01.10.11–30.09.15	€ 3,925,580 (for 4 years)		
Research School	State of NRW	International Graduate Program for Cell Dynamics and Disease (CEDAD Graduate program)	18.03.08–30.09.12	€ 1,116,850 (for 3 years)		
		Molecules and Materials – A Common Design Principle	Start: WS 2009/10	€ 2,945,000 (for 7 years)		
Graduate School	State of NRW	Sustainable Chemical Synthesis (SusChemSys) (participation)	2012–2014	€ 1,500,000 (in total for 3 years)		
International Max Planck Research School	Max Planck Society	International Max Planck Research School – Molecular Biomedicine (IMPRS-MBM)	01.10.09–30.09.15	€ 1,848,000 (for 6 years)		
Research Training Group	Mercator Foundation	Islamic Theology	2010–2016	€ 3,600,000 (in total)		
Young Academics Research Groups	Various sponsors	Angiogenesis in Zebrafish: Wiebke Herzog Young Academics Research Group – NRW Programme for Returnees (young top-level academics)	01.04.08–31.12.12	€ 1,250,000 (for 4 years and 9 month)		
		Family Values and Social Change: The US-American Family in the 20th Century (Isabel Heinemann Junior Research Group under the Emmy Noether Programme)	since April 2009	€ 740,000 (for 5 years)		
		Understanding and Controlling Nanoscale Spin Coupling in Molecular Spintronic Materials (Daniel Wegner Junior Research Group under the Emmy Noether Programme)	since November 2009	€ 1,400,000 (for 5 years)		
		Anionic Low-Oxidation State Transition Metal Compounds (Robert Wolf Junior Research Group under the Emmy Noether Programme)	since June 2010	€ 992,000 (for 5 years)		
		Reactive Phictogen Cations to Systematically Build Up Ring and Cluster Systems and Activate Small Molecules (Jan Weigand Junior Research Group under the Emmy Noether Programme)	since June 2010	€ 1,700,000 (for 5 years)		
		Diversitas Religionum. Thirteenth-Century Foundations of European Discourse on Religious Diversity (Dilthey Fellowship Sita Steckel)	01.11.12–31.10.17	€ 594,000 (for 5 years)		
		Heraldic Performance. On the Development of the Function and Significance of Heraldic Communication in Late Medieval Culture (12th to 15th Centuries) (Dilthey Fellowship Torsten Hiltmann)	01.03.13–28.02.18	€ 561,400 (for 5 years)		
		Erasmus Mundus	EU	Scholarships for the Master's Degree Programme in Geospatial Technologies	15.07.07–2018	€ 2,500,000 (for 5 years)

This summary contains research programmes funded up to and including 2012.

B. Third-Party Funding

› The 20 German universities with the highest amount of third-party funding income in 2010 in the financial years 2008, 2009 and 2010 (incl. medicine)

University	Year					
	2010		2009		2008	
	Third-party funding income in total (€ 1,000)	Rank	Third-party funding income in total (€ 1,000)	Rank	Third-party funding income in total (€ 1,000)	Rank
TH Aachen	267,039	1	250,066	1	217,794	1
TU Munich	254,851	2	228,233	2	205,765	2
HU Berlin*	253,949	3	208,824	3	197,451	3
U Munich	204,727	4	182,250	5	181,398	4
TU Dresden	202,377	5	155,198	6	154,893	5
U Heidelberg	200,726	6	193,617	4	145,441	6
U Freiburg i.Br.	155,219	7	142,341	7	134,816	7
TU Berlin	146,189	8	125,405	8	98,783	14
Karlsruhe Institute of Technology (KIT)	137,087	9	114,755	13	115,933	8
U Hamburg	134,919	10	103,540	17	106,135	12
U Stuttgart	128,850	11	112,245	14	112,001	10
U Münster	126,446	12	116,114	12	98,519	16
U Erlangen-Nuremberg	124,315	13	117,520	11	108,433	11
U Tübingen	121,172	14	121,832	10	105,800	13
U Bonn	117,402	15	124,352	9	96,639	17
U Göttingen	115,903	16	109,461	15	115,906	9
TU Darmstadt	115,425	17	100,512	19	82,092	23
U Frankfurt a.M.	115,408	18	107,159	16	98,682	15
FU Berlin	111,448	19	95,746	20	85,028	20
U Cologne	111,036	20	101,054	18	92,181	18
Top 20 in total	3,144,488		2,810,224		2,563,467	
Universities in total	5,436,293		4,941,430		4,461,407	

Source: German Federal Statistics Office, subject series 11 (Statistisches Bundesamt, Fachserie 11)

* Incl. Charité Universitätsmedizin Berlin

› The 20 German universities with the highest amount of third-party funding income in the budget year 2010 by source (excluding medicine)

University	Third-party funding income in total (€ 1,000)	Rank	Thirdparty funding income per professor (€ 1,000)	Percentage of funding by source/institution (%)				
				DFG	Federal government	EU	Foundations etc.	Commercial business (etc.)
TH Aachen	234,739	1	737.0	30.0	18.7	5.7	2.7	31.1
TU Munich	200,113	2	583.4	35.7	14.1	7.9	4.9	34.2
HU Berlin	89,157	13	219.9	42.8	21.6	1.7	12.1	4.6
U Munich	108,067	9	219.2	54.6	13.3	8.7	1.1	22.2
TU Dresden	168,788	3	437.8	20.3	35.8	22.4	1.8	13.4
U Heidelberg	96,281	10	349.5	60.9	18.0	5.5	8.2	4.8
U Freiburg i.Br.	86,628	14	309.4	39.0	19.1	11.6	4.9	17.9
TU Berlin	145,323	4	397.1	31.1	27.5	11.9	2.3	16.4
Karlsruhe Institute of Technology (KIT)	137,087	5	542.9	43.4	23.3	6.7	4.9	16.0
U Hamburg	83,082	17	158.4	66.5	17.9	5.9	1.0	8.5
U Stuttgart	128,850	6	521.7	31.9	28.8	11.0	1.5	25.5
U Münster	85,166	15	216.4	43.5	23.1	3.7	3.7	19.1
U Erlangen-Nuremberg	89,181	12	240.1	39.1	17.1	4.0	1.0	37.8
U Tübingen	48,723	31	152.3	28.1	19.0	12.6	17.5	22.9
U Bonn	84,784	16	230.4	46.1	22.6	4.7	9.3	7.4
U Göttingen	75,068	21	225.4	57.3	12.1	0.3	0.0	30.2
TU Darmstadt	115,425	7	427.5	39.9	24.1	6.7	4.3	21.2
U Frankfurt a.M.	76,737	20	186.7	48.1	12.3	16.2	3.7	19.3
FU Berlin	111,448	8	257.4	53.9	18.5	6.3	5.9	8.7
U Cologne	51,167	28	126.8	52.2	21.1	5.8	6.0	8.9
Top 20 in total	2,215,814		270.8	40.8	21.0	8.4	4.2	19.9
Universities in total	4,003,245		230.2	39.1	22.3	9.2	5.1	19.1

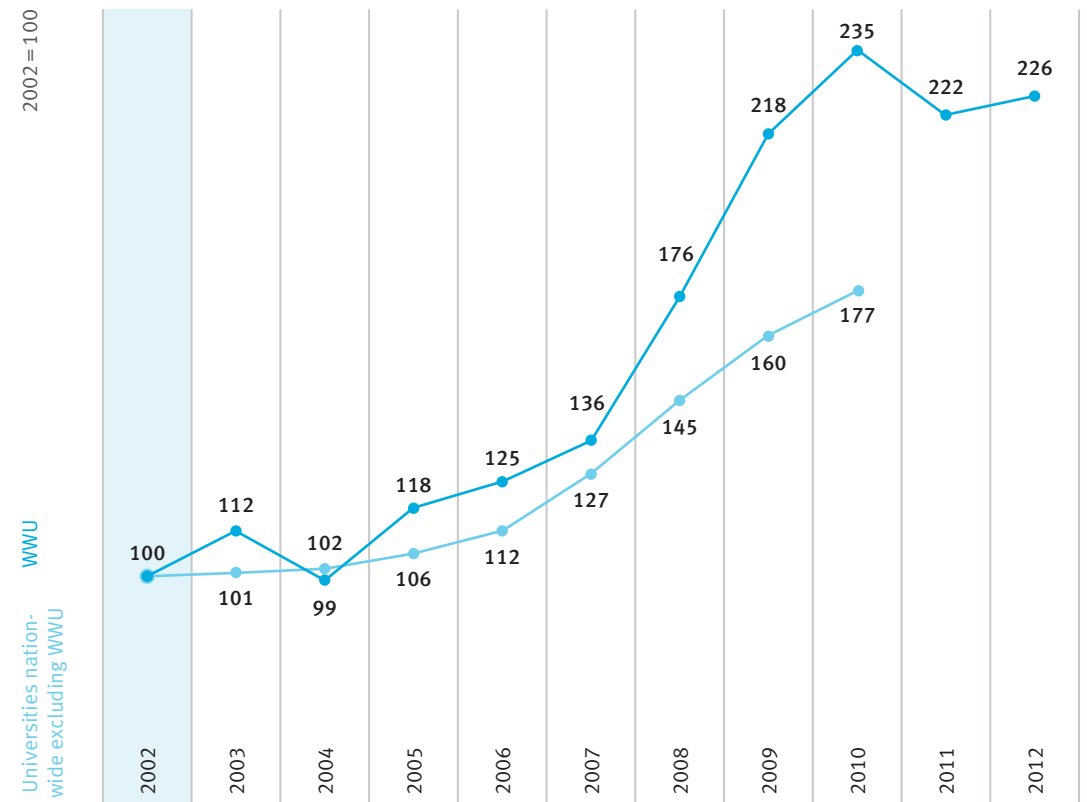
Source: German Federal Statistics Office, subject series 11 (Statistisches Bundesamt, Fachserie 11)

› Development of third-party funding income in nationwide comparison

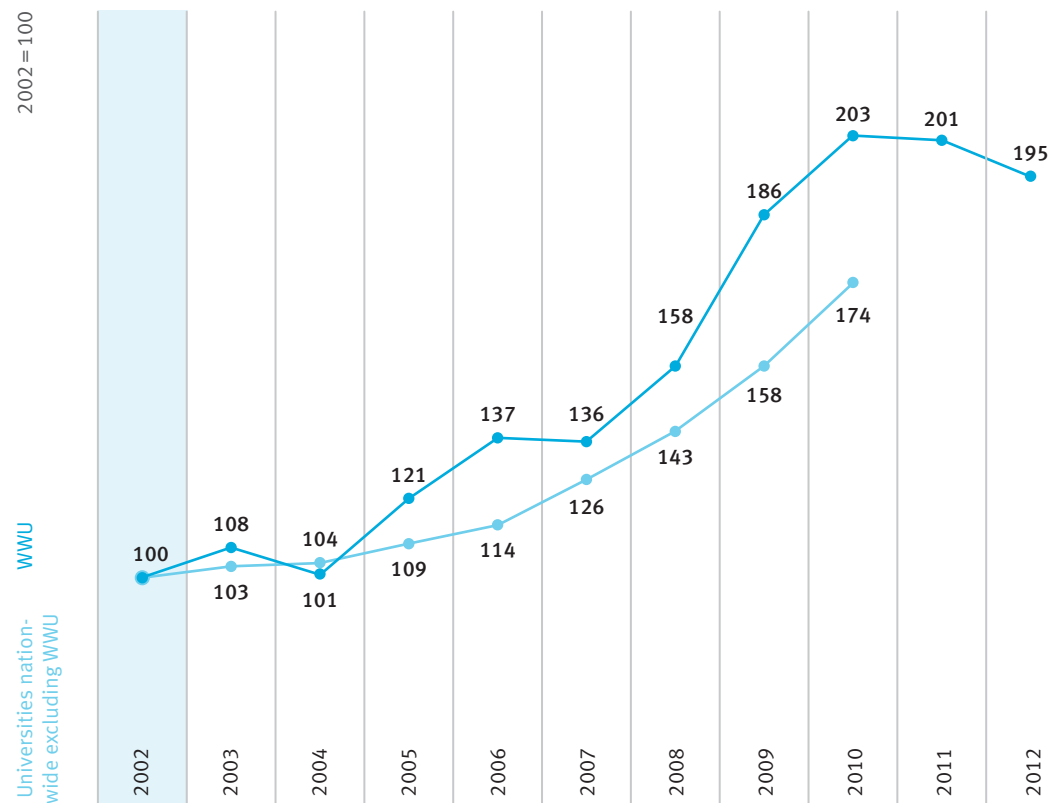
	Third-party funding income (in € 1,000)							
	2005	2006	2007	2008	2009	2010	2011	2012
WWU (total)	75,718	85,586	84,933	98,519	116,114	126,446	125,270	121,480
WWU (excluding medicine)	42,784	45,343	49,146	63,870	78,801	85,166	80,544	81,935
WWU (medicine)	32,934	40,243	35,786	34,650	37,314	41,279	44,726	39,545
Universities nationwide (total) excluding WWU	3,320,010	3,477,363	3,831,594	4,362,888	4,825,316	5,309,848		
Universities nationwide (excluding medicine) excluding WWU	2,343,772	2,490,502	2,818,248	3,213,044	3,556,295	3,918,078		
Universities nationwide (medicine) excluding WWU	976,238	986,861	1,013,346	1,149,844	1,269,021	1,391,769		

Source: German Federal Statistics Office, subject series 11 (Statistisches Bundesamt, Fachserie 11) (2005–2010) WWU statistics (2011–2012)

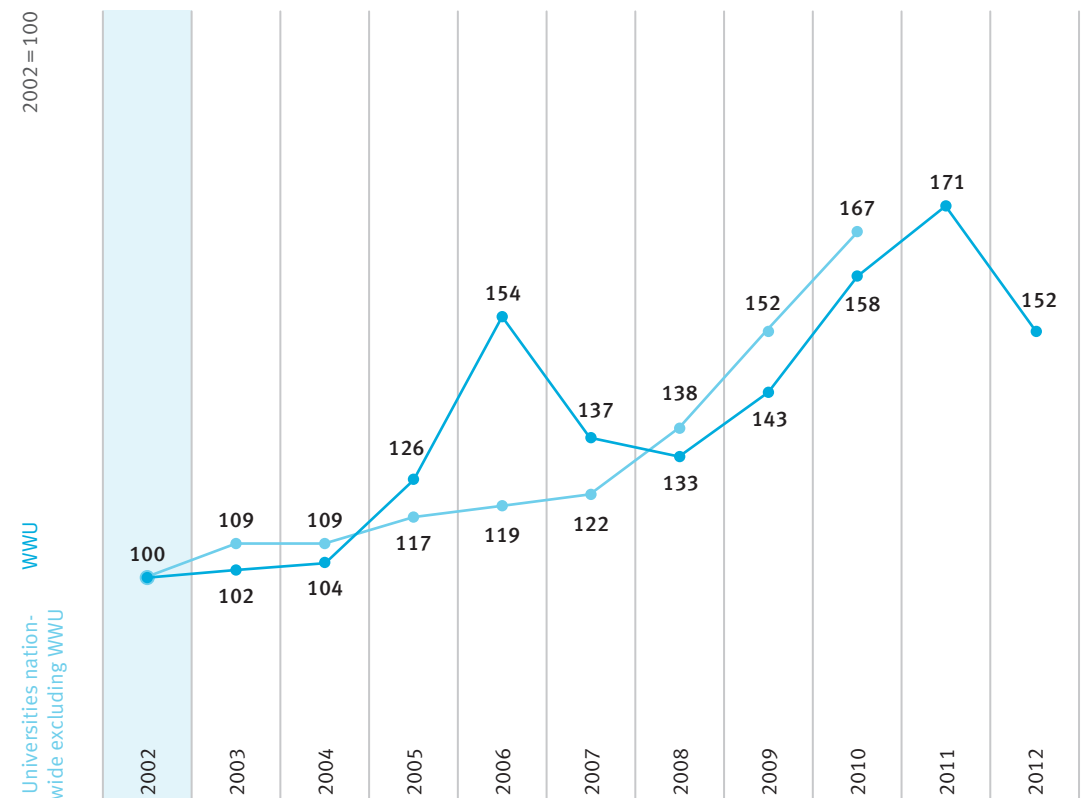
› Development of third-party funding income (excluding medicine) in nationwide comparison



› Development of third-party funding income (total) in nationwide comparison



› Development of third-party funding income (medicine) in nationwide comparison



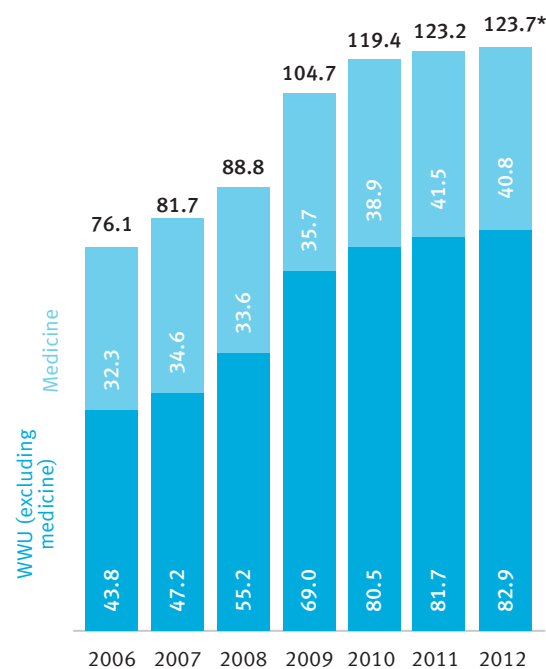
› Third-party funding income by subject groups in comparison with all universities in NRW (excluding medicine) – parameter third-party funding in the performance-based budgeting for the financial year 2013

Higher Education Institution	Third-party funding income (average of the years 2009 and 2010*) – in € 1,000					%
	Humanities and Social Sciences	Natural Sciences	Engineering	Central Institutes	Third-party funding expenditure in total	
TH Aachen	7,530	41,169	138,672	43,160	230,530	28.16
U Bonn	11,313	58,593	1,326	15,189	86,421	10.56
U Münster	19,641	44,223	166	19,227	83,257	10.17
U Bochum	18,351	32,194	24,620	4,723	79,888	9.76
U Dortmund	8,516	11,782	28,546	11,801	60,645	7.41
U Duisburg-Essen	13,488	19,024	13,557	11,693	57,762	7.05
U Cologne	12,858	38,530	0	0	51,388	6.28
U Bielefeld	13,493	27,290	0	8,013	48,796	5.96
U Paderborn	4,860	12,197	13,974	5,717	36,748	4.49
U Düsseldorf	3,191	13,439	0	6,921	23,551	2.88
U Wuppertal	3,078	9,902	7,454	646	21,080	2.57
U Siegen	6,797	4,457	8,880	526	20,660	2.52
DSH Cologne	9,412	0	0	0	9,412	1.15
FeU Hagen	2,906	1,282	671	3,752	8,611	1.05
Total	135,433	314,082	237,865	131,369	818,748	100.00

Source: MIWFNRW – Department 111

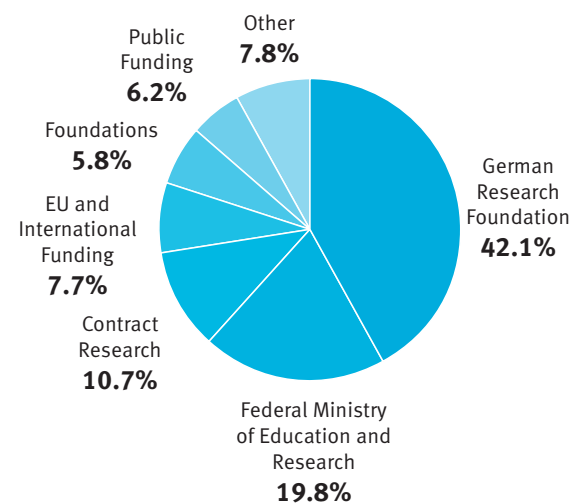
* Weighted average from 2009 (30%) and 2010 (70%)

› Development of third-party funding expenditure since 2006 (in € m)

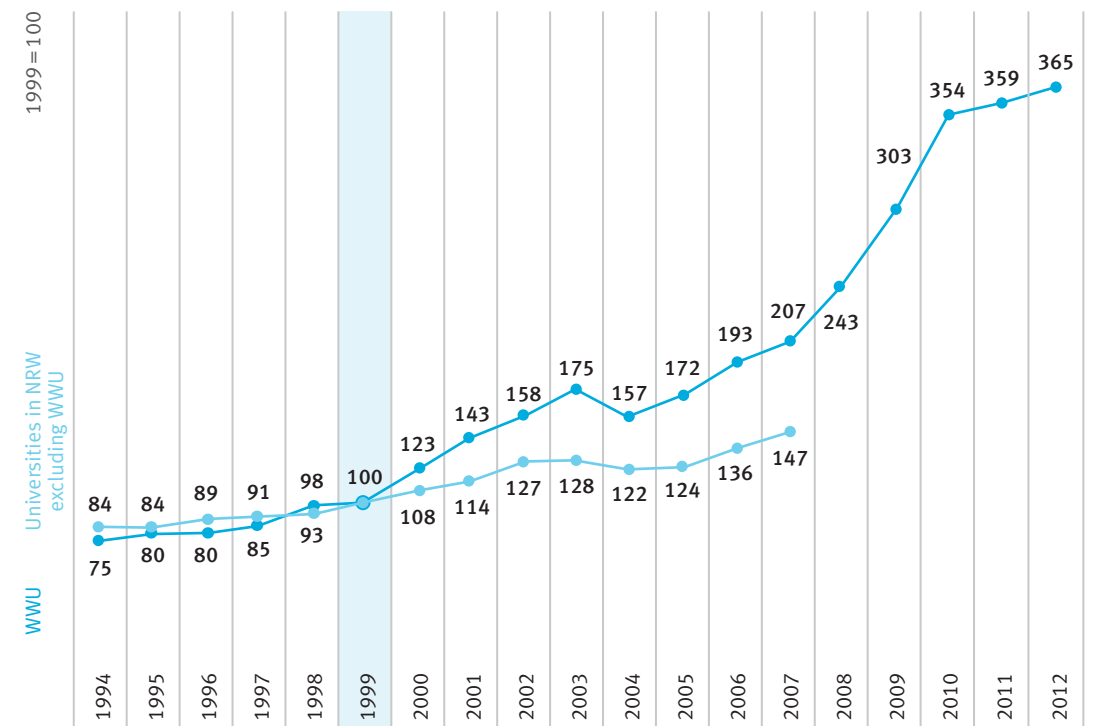


* preliminary result as at March 2013

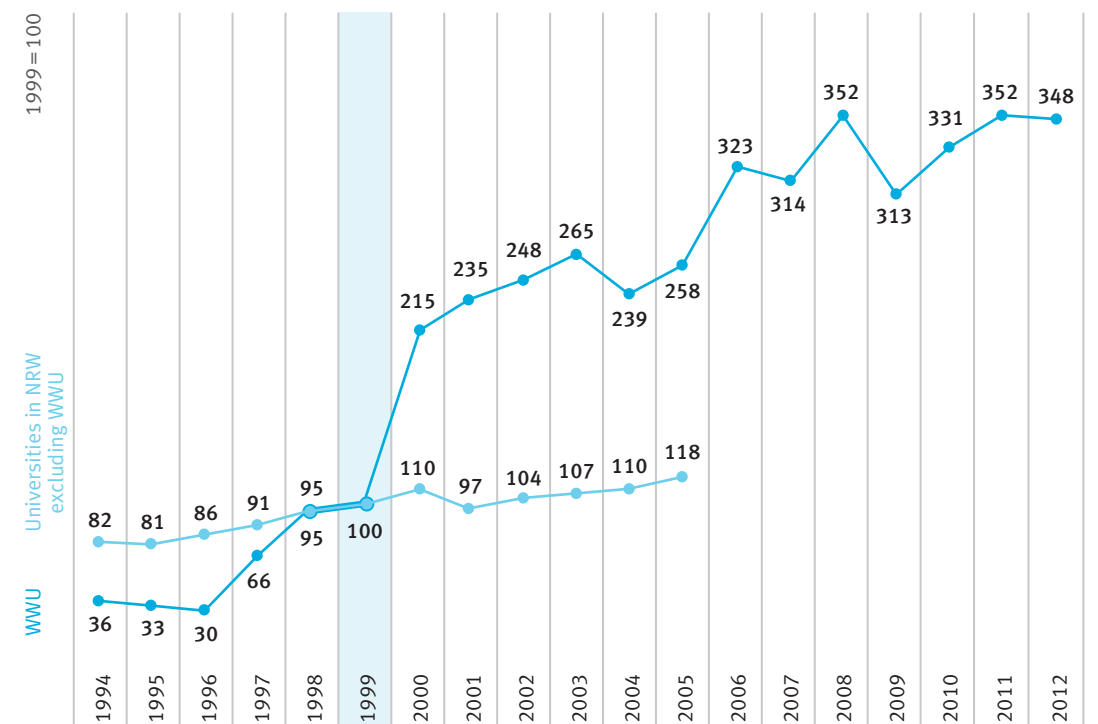
› Third-party funding expenditure (incl. medicine) by source of origin in the budget year 2012



› Development of third-party funding expenditure (excluding medicine) in comparison with all universities in NRW



› Development of third-party funding expenditure (excluding medicine) by Collaborative Research Centres (CRC) funded by the DFG in comparison with all universities in NRW



› Third-party funding expenditure in the years 2004–2012 (in €)

Department	2004	2005	2006
DEP 01 Protestant Theology	760,403	682,239	547,579
DEP 02 Roman Catholic Theology	1,194,873	1,509,221	1,608,966
DEP 03 Law	1,168,734	1,229,983	1,218,952
DEP 04 Economics	3,328,882	3,129,802	3,614,467
DEP 05 Medicine	25,863,637	29,400,041	32,295,477
DEP 06 Education and Social Studies	2,054,804	1,573,238	1,945,872
DEP 07 Psychology and Sport Studies	1,376,528	1,232,493	1,454,159
DEP 08 History and Philosophy	2,079,459	2,755,209	3,066,621
DEP 09 Philologies	851,151	862,352	558,924
DEP 10 Mathematics and Computer Sciences	1,854,277	1,745,258	1,967,684
DEP 11 Physics **	4,725,585	5,529,413	7,259,056
DEP 12 Chemistry and Pharmacy	5,349,124	5,413,498	5,815,082
DEP 13 Biology	3,447,241	3,734,454	5,713,489
DEP 14 Geosciences	3,380,618	4,008,300	5,111,479
DEP 15 Music Department	10,928	23,543	14,657
Departments in total	57,446,243	62,829,044	72,192,462
WWU in total (incl. central institutions)	61,740,600	67,582,689	76,058,631

* Preliminary result as at March 2013

** Incl. Department of General Knowledge for Primary Schools

› Third-party funding expenditure by Collaborative Research Centres (CRC)

Department	2004	2005	2006
DEP 01 Protestant Theology	5,166	6,240	0
DEP 02 Roman Catholic Theology	181,071	199,771	249,075
DEP 03 Law	95,101	94,128	88,946
DEP 05 Medicine	2,420,813	2,703,525	3,616,841
DEP 08 History and Philosophy	1,019,091	1,080,751	1,283,579
DEP 09 Philologies	161,226	169,099	89,219
DEP 10 Mathematics and Computer Sciences	908,394	1,117,513	1,410,536
DEP 11 Physics	239,313	242,694	373,277
DEP 12 Chemistry and Pharmacy	2,082,097	2,088,002	2,081,978
DEP 13 Biology	763,335	876,363	1,785,998
Departments in total	7,875,607	8,578,087	10,979,449
WWU in total (incl. overheads)			

* Preliminary result as at March 2013

2007	2008	2009	2010	2011	2012*
600,859	1,143,441	1,560,576	1,740,394	1,599,322	1,349,281
1,415,205	1,705,617	2,355,707	2,442,074	2,398,602	1,882,792
1,286,156	1,657,271	2,492,777	3,032,048	2,899,671	2,593,871
3,851,335	4,137,036	2,923,939	2,812,375	3,083,130	3,724,439
34,567,429	33,614,347 ^r	35,742,301	38,902,678	41,535,068	40,799,760
2,218,876	2,623,267	3,292,337	3,522,070	4,227,636	3,381,176
1,625,763	1,674,635	1,791,709	2,085,749	2,206,358	2,428,753
3,253,311	4,271,982	6,497,714	7,367,829	7,105,159	4,686,523
707,864	1,219,193	2,293,456	2,430,423	4,041,930	2,203,339
2,210,051	2,941,818	3,358,354	3,458,583	3,569,908	3,664,660
6,757,399	6,737,738	7,508,908	7,644,081	8,792,020	9,219,504
6,616,522	7,009,955	9,669,398	19,852,850	17,483,041	15,818,952
5,610,354	5,967,016	7,414,643	8,617,315	8,207,011	8,982,452
6,354,781	8,927,381	11,472,374	7,124,274	7,109,019	6,519,528
36,597	27,537	17,375	23,965	18,154	43,843
77,112,501	83,658,234	98,391,568	111,056,706	114,276,030	107,298,875
81,727,405	88,779,085	104,670,152	119,415,087	123,221,232	123,704,363

^r subsequent correction

Source: Dept. 5

funded by the DFG in 2004–2012 (in €)

2007	2008	2009	2010	2011	2012*
0	0	0	0	0	0
280,393	272,846	130,677	147,236	124,081	150
94,098	108,109	45,714	38,328	56,654	0
3,684,351	4,428,304	4,328,164	4,749,444	5,333,164	5,080,478
1,516,497	1,529,677	1,224,226	1,245,694	1,229,333	149,524
78,515	80,267	96,621	145,177	119,720	0
1,471,276	1,728,492	1,820,945	906,154	1,827,916	1,905,043
463,950	878,446	1,361,187	946,215	1,066,660	1,084,982
2,118,258	2,229,479	1,240,386	2,278,048	2,009,623	2,343,350
1,139,444	1,180,725	1,149,196	1,833,811	1,574,182	2,444,766
10,846,781	12,436,345	11,397,115	12,290,106	13,341,334	13,008,293
	12,456,345	11,447,256	12,290,106	13,350,632	13,008,851

Source: Dept. 5

C. Rankings

› German universities in the Academic Ranking of World Universities (Shanghai Ranking) 2012

University	National Rank	European Rank	Indicator					
			Alumni	Award	HiCi	N&S	PUB	PCP
TU Munich	1	53	36.8	22.2	24.6	21.3	47.2	28.8
U Munich	2	60	27.1	19.7	16.2	28.8	51.4	28.9
U Heidelberg	3	62	14.3	26.1	19.1	27.0	49.4	28.4
U Freiburg i.Br.	4	99	19.6	19.4	15.9	24.0	37.5	22.9
U Bonn	5–8	101–150	16.3	20.4	14.7	21.1	40.9	23.2
U Frankfurt a.M.	5–8	101–150	32.1	0.0	19.1	21.3	38.5	22.9
U Göttingen	5–8	101–150	28.7	15.3	16.2	18.9	39.6	23.0
U Münster	5–8	101–150	20.3	13.7	12.2	15.7	36.4	19.9
U Hamburg	9–14	151–200	12.1	0.0	17.7	16.9	34.9	18.8
U Kiel	9–14	151–200	10.8	13.7	10.2	15.2	31.6	17.2
U Cologne	9–14	151–200	0.0	11.9	7.2	19.8	35.9	18.7
U Mainz	9–14	151–200	0.0	7.9	17.7	16.1	37.1	19.4
U Tübingen	9–14	151–200	23.6	0.0	14.5	18.6	39.9	21.3
U Würzburg	9–14	151–200	20.3	0.0	23.6	16.0	34.0	20.2
TU Dresden	15–24	201–300	0.0	0.0	7.2	12.3	37.9	17.5
TH Aachen	15–24	201–300	0.0	0.0	10.2	9.2	40.2	18.4
TU Berlin	15–24	201–300	17.1	0.0	15.6	6.0	29.4	15.5
U Bochum	15–24	201–300	0.0	0.0	12.5	8.3	36.1	16.9
U Düsseldorf	15–24	201–300	12.1	0.0	12.1	10.6	30.7	15.4
U Erlangen-Nuremberg	15–24	201–300	0.0	0.0	14.5	15.6	40.3	19.7
U Karlsruhe	15–24	201–300	0.0	0.0	9.8	14.7	36.1	17.3
U Leipzig	15–24	201–300	12.1	13.7	0.0	8.0	33.9	16.6
U Marburg	15–24	201–300	10.8	0.0	14.5	14.9	30.0	16.1
U Stuttgart	15–24	201–300	19.6	0.0	10.2	15.2	28.0	15.6

Source: <http://www.shanghairanking.com/ARWU2012.html>

The indicators are based on the following data

- Alumni** Total number of alumni of an institution who have won Nobel Prizes and Fields Medals
Award Total number of staff of an institution who have won Nobel Prizes and Fields Medals
HiCi Number of highly cited researchers in 21 broad subject categories
N&S Number of papers published in Nature and Science between 2007 and 2011
PUB Total number of papers indexed in Science Citation Index-expanded and Social Science Citation Index
PCP Per capita academic performance of an institution

› The 20 German universities with the most research stays funded by the AvH Foundation in the Humboldt Rankings 2012

University	Absolute rankings	Weighted rankings	Total number of guest researchers	Fellows			Award winners			Weighting factor
				Total	Female		Total	Female		
					N	in %		N	in %	
FU Berlin	1	1	286	241	80	33.2	45	4	8.9	140.2
U Munich	2	3	276	226	63	27.9	50	5	10.0	77.3
HU Berlin	3	2	263	218	55	25.2	45	6	13.3	109.1
U Heidelberg	4	6	191	152	33	21.7	39	2	5.1	59.0
U Bonn	5	4	188	162	43	26.5	26	0	0.0	65.3
TU Munich	6	5	174	129	23	17.8	45	2	4.4	59.8
U Freiburg i.Br.	7	7	158	136	30	22.1	22	0	0.0	58.7
U Göttingen	8	9	140	117	26	22.2	23	1	4.3	55.3
TU Berlin	9	8	124	94	16	17.0	30	2	6.7	57.1
U Cologne	10	15	123	103	29	28.2	20	3	15.0	46.1
U Münster	10	22	123	99	21	21.2	24	2	8.3	41.4
TH Aachen	12	14	121	105	19	18.1	16	2	12.5	46.9
U Frankfurt a.M.	13	21	112	90	25	27.8	22	1	4.5	42.4
U Bochum	14	17	111	88	18	20.5	23	0	0.0	44.4
U Erlangen-Nuremberg	14	23	111	91	19	20.9	20	1	5.0	39.8
Karlsruhe Institute of Technology (KIT)	16	20	110	85	17	20.0	25	0	0.0	43.1
U Tübingen	17	30	99	90	17	18.9	9	0	0.0	31.1
U Hamburg	18	27	93	81	24	29.6	12	0	0.0	32.6
U Würzburg	19	16	92	77	16	20.8	15	1	6.7	45.1
TU Darmstadt	20	12	85	68	7	10.3	17	1	5.9	49.1

Absolute rankings: rankings based on the number of guest researchers from 2007 to 2011

Weighted Rankings: weighting based on the number of guest researchers in relation to the number of professors per institution

Weighting factor: guest researchers per 100 C4/W3 professors

Source: <http://www.humboldt-foundation.de/web/humboldt-ranking-2012.html>

› The 20 German universities with the highest DFG funding volume – The DFG Funding Atlas 2012

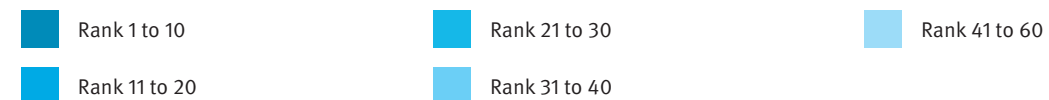
Higher Education Institution	Funding Atlas 2012 (Awarding period 2008–2010)		Funding Ranking 2009 (Awarding period 2005–2007)		Funding Ranking 2006 (Awarding period 2002–2004)		Funding Ranking 2003 (Awarding period 1999–2001)	
	Rank	€ m	Rank	€ m	Rank	€ m	Rank	€ m
TH Aachen	1	278.1	1	257.0	2	126.2	1	119.2
U Munich	2	263.7	2	249.0	1	130.8	2	116.9
FU Berlin	3	250.8	5	194.4	10	96.6	13	76.6
TU Munich	4	250.1	4	200.4	9	99.3	3	116.3
U Heidelberg	5	246.3	3	215.4	3	105.1	6	94.2
U Freiburg i.Br.	6	202.1	6	165.5	11	91.1	11	85.2
Karlsruhe Institute of Technology (KIT)	7	200.5	7	159.4	6	100.5	10	87.0
HU Berlin	8	179.8	10	153.4	5	101.5	9	90.1
U Göttingen	9	168.6	9	153.5	12	85.1	15	74.0
U Erlangen-Nuremberg	10	159.1	8	157.6	7	100.3	5	95.4
U Bonn	11	157.4	13	122.6	13	81.9	12	81.6
U Münster	12	149.4	15	119.9	15	73.5	19	69.0
TU Dresden	13	144.0	18	107.3	20	66.5	24	57.2
U Tübingen	14	140.9	14	120.4	8	99.7	4	100.2
U Würzburg	15	133.1	17	110.4	4	104.7	8	90.3
U Frankfurt a.M.	16	131.7	12	124.8	20	66.5	18	69.4
U Cologne	17	129.6	11	126.4	18	70.7	16	73.8
TU Darmstadt	18	126.2	20	106.1	25	53.8	25	53.5
U Konstanz	19	123.6	16	119.7	34	43.7	29	43.2
U Hamburg	20	117.6	21	98.7	17	72.1	14	74.1
Top 20 in total	3,552.4		3,069.9		1,827.2		1,746.9	
HEIs in total	5,927.9		5,076.7		3,241.1		3,095.4	

Source: German Research Foundation (DFG): DFG Funding Atlas 2012, DFG Funding Rankings 2003, 2006 and 2009

› The 20 German universities with the highest DFG funding volume in the DFG Funding Atlas 2012 by scientific discipline

Higher Education Institution	DFG awards in total		DFG awards in							
			Humanities and Social Sciences		Life Sciences		Natural Sciences		Engineering Sciences	
	Rank	€ m	Rank	€ m	Rank	€ m	Rank	€ m	Rank	€ m
TH Aachen	1	278.1	46	3.4	25	35.5	23	28.4	1	160.6
U Munich	2	263.7	7	37.4	1	113.7	3	62.1	46	3.5
FU Berlin	3	250.8	1	94.6	7	84.5	10	42.2	47	3.4
TU Munich	4	250.1	48	3.3	10	74.1	2	62.9	4	74.0
U Heidelberg	5	246.3	5	40.5	3	107.9	5	45.4	31	8.8
U Freiburg i.Br.	6	202.1	18	14.2	2	107.9	30	20.5	18	20.5
Karlsruhe Institute of Technology (KIT)	7	200.5	43	3.5	38	12.0	8	43.0	3	83.6
HU Berlin	8	179.8	2	55.7	5	87.0	17	32.9	44	4.2
U Göttingen	9	168.6	16	18.4	9	79.0	16	34.4	49	2.8
U Erlangen-Nuremberg	10	159.1	33	7.6	14	55.2	13	37.6	8	58.6
U Bonn	11	157.4	11	22.9	13	60.4	1	68.0	37	6.1
U Münster	12	149.4	3	50.2	15	54.2	12	40.6	42	4.5
TU Dresden	13	144.0	27	11.6	16	53.5	31	20.2	7	58.7
U Tübingen	14	140.9	8	31.4	8	81.2	29	21.0	35	7.3
U Würzburg	15	133.1	31	9.9	4	96.5	25	23.7	47	3.0
U Frankfurt a.M.	16	131.7	6	37.7	12	61.6	20	30.3	57	2.1
U Cologne	17	129.6	14	20.6	11	72.2	15	34.5	54	2.2
TU Darmstadt	18	126.2	34	7.3	48	4.7	22	29.6	2	84.6
U Konstanz	19	123.6	4	41.1	34	18.4	35	14.7	39	5.6
U Hamburg	20	117.6	10	23.7	23	37.4	4	51.4	41	5.1
HEIs in total	5,927.9		893.5		2,015.6		1,363.6		1,277.2	

Source: German Research Foundation (DFG): DFG Funding Atlas 2012



› DFG funding volume by HEI and selected funding programmes in

Higher Education Institution	Total		Individual grants		Collaborative Research Centres	
	Rank	€ m	Rank	€ m	Rank	€ m
TH Aachen	1	278.1	3	69.2	4	54.9
U Munich	2	263.7	2	69.7	3	61.2
FU Berlin	3	250.8	7	59.1	1	70.4
TU Munich	4	250.1	1	82.1	6	50.3
U Heidelberg	5	246.3	5	61.7	7	49.9
U Freiburg i.Br.	6	202.1	4	65.8	13	38.9
Karlsruhe Institute of Technology (KIT)	7	200.5	18	43.2	17	36.2
HU Berlin	8	179.8	13	48.0	2	67.6
U Göttingen	9	168.6	10	54.4	31	19.7
U Erlangen-Nuremberg	10	159.1	8	58.8	15	37.3
U Bonn	11	157.4	14	47.0	5	52.8
U Münster	12	149.4	9	57.0	9	43.4
TU Dresden	13	144.0	11	53.4	14	38.8
U Tübingen	14	140.9	6	59.5	16	37.0
U Würzburg	15	133.1	24	36.2	8	44.7
U Frankfurt a.M.	16	131.7	15	45.9	29	20.5
U Cologne	17	129.6	12	51.0	10	42.1
TU Darmstadt	18	126.2	17	43.9	22	30.2
U Konstanz	19	123.6	38	21.8	37	17.1
U Hamburg	20	117.6	16	44.7	24	27.9
HEIs in total		5,927.9		2,016.7		1,483.8
Number of reported HEIs	186		169		72	

DFG Funding Atlas 2012

Clusters of Excellence		Priority Programmes		Research Training Groups		Research Units	
Rank	€ m	Rank	€ m	Rank	€ m	Rank	€ m
1	64.8	1	16.9	5	11.9	24	6.6
4	47.3	3	14.8	10	10.0	7	10.2
5	45.2	12	9.1	9	10.1	2	15.3
2	51.2	7	13.1	26	5.9	21	7.2
3	47.8	13	9.1	3	13.7	8	10.1
13	22.1	19	7.7	1	16.2	14	8.6
26	5.0	2	15.7	7	10.8	18	7.8
19	20.1	33	5.7	4	13.4	6	11.1
29	3.9	20	7.6	2	15.6	1	15.3
8	24.4	4	14.4	16	8.1	5	12.1
10	23.1	9	10.1	34	4.8	3	13.8
7	26.1	17	8.0	11	9.2	31	5.7
27	4.7	6	13.8	43	3.1	38	3.6
14	21.7	23	7.4	18	7.0	16	8.2
-	-	21	7.6	6	11.4	10	9.6
6	42.9	28	6.8	20	6.8	13	8.9
17	20.5	26	7.2	44	3.0	36	3.8
11	23.0	8	10.4	8	10.7	34	4.6
12	23.0	38	4.7	24	6.2	37	3.7
18	20.1	30	6.2	13	8.9	9	9.6
	694.6		409.1		358.6		342.5
37		93		84		81	

Source: German Research Foundation (DFG): DFG Funding Atlas 2012

D. Habilitations

› The 20 German universities with the highest number of habilitations in

Higher Education Institution	Habilitations 2011 in total	Female		Subject group		
		N	in %	Linguistics and Cultural Studies	Sports Science	Law, Economics and Social Sciences
U Munich	104	34	32.7	20	-	7
U Heidelberg	78	16	20.5	5	-	3
Charité Berlin	64	14	21.9	-	-	-
TU Munich	56	7	12.5	-	-	1
U Tübingen	55	17	30.9	11	-	3
U Freiburg i.Br.	52	13	25.0	7	-	3
U Hamburg	51	15	29.4	13	-	4
U Erlangen-Nuremberg	44	15	34.1	2	1	3
U Frankfurt a.M.	41	19	46.3	18	-	3
U Bonn	39	12	30.8	5	-	3
U Regensburg	38	11	28.9	9	-	2
TH Aachen	38	9	23.7	1	-	2
U Cologne	35	7	20.0	2	-	8
U Münster	35	6	17.1	6	-	3
U Mainz	35	8	22.9	3	-	1
U Göttingen	34	5	14.7	2	-	-
Hannover Medical School	34	6	17.6	-	-	-
TU Dresden	33	5	15.2	4	-	-
U Ulm	32	3	9.4	-	-	-
U Jena	32	6	18.8	2	1	1
Top 20 in total	930	228	24.5	110	2	47
Universities in total	1,563	398	25.5	268	7	114

the year 2011

Mathematics, Natural Sciences	Medicine/ Health Studies	Veterinary Medicine	Agricultural Science, Nutritional Sciences	Engineering	Art, Art Studies	Subject group	
						Habilitations 2010 in total	Habilitations 2011 in total
16	54	4	-	-	3	112	112
10	60	-	-	-	-	96	96
-	78	-	-	-	-	73	73
18	33	-	-	4	-	63	63
2	39	-	-	-	-	70	70
14	28	-	-	-	-	45	45
4	30	-	-	-	-	53	53
4	30	-	-	4	-	68	68
3	15	-	-	-	2	52	52
5	24	-	2	-	-	43	43
4	23	-	-	-	-	42	42
4	29	-	-	2	-	29	29
8	17	-	-	-	-	55	55
3	22	-	-	-	1	39	39
8	20	-	-	-	3	36	36
9	21	-	2	-	-	44	44
1	33	-	-	-	-	35	35
5	11	-	-	11	2	38	38
6	26	-	-	-	-	30	30
11	17	-	-	-	-	29	29
135	610	4	4	21	11	1,052	1,052
257	799	14	15	65	24	1,755	1,755

Source: German Federal Statistics Office, subject series 11 (Statistisches Bundesamt, Fachserie 11)

› Habilitations by department from 2004–2012

Department	2004	2005	2006	2007	2008	2009	2010	2011	2012
DEP 01 Protestant Theology	4	3	3	3	1	2	2	0	0
DEP 02 Roman Catholic Theology	1	3	2	1	4	3	1	2	2
DEP 03 Law	1	2	0	1	3	2	1	1	2
DEP 04 Economics	1	2	1	2	1	1	4	1	2
DEP 05 Medicine	31	28	35	31	27	25	21	22	30
DEP 06 Education and Social Studies	5	5	2	3	2	0	1	1	3
DEP 07 Psychology and Sport Studies	3	3	4	5	3	1	1	1	1
DEP 08 History and Philosophy	7	2	6	1	6	3	3	2	3
DEP 09 Philologies	0	2	4	2	2	2	0	2	3
DEP 10 Mathematics and Computer Sciences	3	3	2	1	3	3	3	2	1
DEP 11 Physics	1	3	1	2	1	0	0	1	0
DEP 12 Chemistry and Pharmacy	4	0	1	4	0	0	0	0	0
DEP 13 Biology	2	1	0	0	0	1	2	0	0
DEP 14 Geosciences	1	0	3	1	1	1	0	0	2
WWU in total	64	57	64	57	54	44	39	35	49
Habilitations by women	9	10	12	12	13	12	3	6	8
Percentage (%)	14.1	17.5	18.8	21.1	24.1	27.3	7.7	17.1	16.3

E. Doctoral Degrees

› The 20 German universities with the highest number of doctoral degrees taken in the academic year 2011

Higher Education Institution	Doctoral degrees			
	N	% of total	Female	
			N	%
U Munich	1,204	4.5	676	56.1
U Heidelberg	1,128	4.2	582	51.6
U Hamburg	1,042	3.9	534	51.2
TU Munich	911	3.4	335	36.8
TH Aachen	801	3.0	262	32.7
U Freiburg i.Br.	765	2.9	348	45.5
U Erlangen-Nuremberg	751	2.8	329	43.8
U Göttingen	747	2.8	344	46.1
U Cologne	716	2.7	338	47.2
U Münster	696	2.6	323	46.4

Continued ›

Higher Education Institution	Doctoral degrees			
	N	% of total	Female	
			N	%
TU Dresden	688	2.6	304	44.2
FU Berlin	687	2.6	383	55.7
U Frankfurt a.M.	651	2.4	314	48.2
U Bonn	639	2.4	302	47.3
U Tübingen	619	2.3	315	50.9
U Mainz	615	2.3	322	52.4
Charité Berlin	565	2.1	331	58.6
U Jena	540	2.0	269	49.8
U Würzburg	503	1.9	269	53.5
U Leipzig	493	1.8	254	51.5
Top 20 in total	14,761	55.2	7,134	48.3
HEI in total	26,717	100.0	11,982	44.8

Source: German Federal Statistics Office, subject series 11 (Statistisches Bundesamt, Fachserie 11)

› Doctoral degrees by subject groups in comparison with all universities in NRW (excluding medicine)

Higher Education Institution	Doctoral degrees (average of the years 2009–2011)				%
	Humanities and Social Sciences	Natural Sciences	Engineering	Doctoral degrees in total	
TH Aachen	50	202	277	529	14.80
U Münster	239	248	0	487	13.63
U Cologne	265	195	0	460	12.86
U Bonn	174	272	7	452	12.65
U Bochum	134	135	92	361	10.09
U Dortmund	73	94	76	243	6.80
U Düsseldorf	98	145	0	243	6.79
U Duisburg-Essen	68	112	47	227	6.36
U Bielefeld	88	97	0	185	5.18
U Paderborn	43	50	30	122	3.42
U Wuppertal	34	32	29	95	2.66
U Siegen	43	19	22	85	2.38
FeU Hagen	49	5	5	59	1.64
DSH Cologne	27	0	0	27	0.75
Total	1,384	1,606	585	3,575	100.00

Source: MIWF NRW – Department 213

› Doctoral degrees taken in the main subject in the academic years 2004–2011 by department/subject

Department/Subject	2004	2005	2006	2007	2008	2009	2010	2011
DEP 01 Protestant Theology	7	10	9	2	8	4	6	5
DEP 02 Roman Catholic Theology	14	13	10	17	13	0	12	7
DEP 03 Law	123	99	98	89	105	98	88	82
Business Administration	34	33	29	28	36	43	27	25
Economics	7	8	14	11	10	15	9	7
Information Systems	8	7	12	9	12	7	3	12
DEP 04 Economics	49	48	55	48	58	65	39	44
Medicine	274	216	235	209	209	170	207	199
Dentistry	66	49	55	72	60	57	51	54
DEP 05 Medicine	340	265	290	281	269	227	258	253
Communication Studies	2	4	6	4	6	6	5	9
Education	8	10	15	7	9	12	14	12
Political Sciences	20	12	10	13	14	12	19	22
Sociology	6	9	8	10	4	6	4	2
DEP 06 Education and Social Studies	36	35	39	34	33	36	37	45
Psychology	13	7	4	9	25	10	15	8
Sport Studies	3	2	2	3	4	1	0	2
DEP 07 Psychology and Sport Studies	16	9	6	12	29	11	15	10
Archaeology	2	0	0	2	2	2	2	1
Byzantine Studies	0	0	0	0	0	0	0	1
History	25	18	12	17	8	14	15	15
Classical Philology	4	1	1	2	2	0	0	2
Art History	3	5	7	3	2	4	4	1
Medieval Latin Philology	1	1	1	1	0	1	1	3
Music Department	0	1	3	2	0	0	0	0
Musicology	1	1	2	2	3	2	2	1
Philosophy	4	2	4	4	2	3	4	2
Textile Design	0	0	2	0	0	0	0	0
Prehistory and Early History	2	0	0	3	8	2	1	1
Ethnology	2	1	2	0	1	0	2	1
Folklore and European Ethnology	2	5	1	0	2	1	0	1
DEP 08 History and Philosophy	46	35	35	36	30	29	31	29

Continued ›

Department/Subject	2004	2005	2006	2007	2008	2009	2010	2011
Egyptology/Coptology	2	1	2	1	0	1	0	1
General Linguistics	2	4	0	1	0	1	0	0
English Philology (incl. Science of Books)	5	3	1	4	4	2	2	2
German Philology/Old and New German Literature	9	6	15	10	7	7	7	7
Indo-Germanic Linguistics	0	0	0	0	0	0	0	0
Indologie	0	0	0	0	0	0	0	0
Arabic and Islamic Studies	0	0	0	0	0	2	0	0
Dutch Philology	0	1	1	2	0	1	1	1
Ancient Oriental Studies	1	1	2	0	1	1	0	1
Romance Language and Literature	3	1	2	1	1	2	1	3
Sinology	0	2	0	0	0	0	1	1
Scandinavian Studies	0	0	0	0	1	0	0	0
Slavonic Studies	1	0	0	0	0	0	1	0
DEP 09 Philologies	23	19	23	19	14	17	13	16
DEP 10 Mathematics and Computer Sciences	15	19	11	22	17	10	29	25
Geophysics	1	1	4	6	0	0	0	0
Physics	27	11	15	16	16	23	31	21
DEP 11 Physics	28	12	19	22	16	23	31	21
Chemistry	78	73	72	49	70	82	80	65
Food Chemistry	2	3	3	5	3	0	20	3
Pharmacy	5	10	25	19	9	0	16	15
DEP 12 Chemistry and Pharmacy	85	86	100	73	82	82	116	83
DEP 13 Biology	36	54	50	43	48	66	81	66
Geography	8	3	7	5	6	17	11	7
Geology	4	0	7	7	1	3	8	1
Mineralogy	1	0	6	1	3	3	8	2
Planetology	0	0	0	0	2	3	1	0
DEP 14 Geosciences	13	3	20	13	12	26	28	10
Religious Studies	0	0	0	0	0	0	2	0
WWU in total	831	707	765	711	734^r	694^r	791	696
Doctoral degrees taken by female students	345	262	340	301	330	303	353	323
Percentage (%)	41.5	37.1	44.4	42.3	45.0	43.7	44.6	46.4
Doctoral degrees taken by foreign students	54	73	82	65	71	67	79	50
Percentage (%)	6.5	10.3	10.7	9.1	9.7	9.7	10.0	7.2
WWU in total (excluding medicine)	491	442	475	430	465^r	467^r	533	443
Doctoral degrees taken by female students	174	141	194	170	191	182	219	183
Percentage (%)	35.4	31.9	40.8	39.5	41.1	39.0	41.1	41.3
Doctoral degrees taken by foreign students	45	60	70	59	53	60	70	39
Percentage (%)	9.2	13.6	14.7	13.7	11.4	12.8	13.1	8.8

r Internal correction based on 157 late registrations for the summer semester 2008 to the IT.NRW

Source: Internal statistics of the WWU based on official examination statistics



A. Number of Students

› The 20 German universities with the highest number of students in the winter semester 2011/12

Higher Education Institution	Students								
	Total			German students			Foreign students		
	Total	in their 1st ... semester		Total	in their 1st ... semester		Total	in their 1st ... semester	
		university*	subject*		university*	subject*		university*	subject*
FeU Hagen	71,218	5,351	14,764	64,505	4,224	13,020	6,713	1,127	1,744
U Cologne	46,948	6,660	11,397	41,715	5,537	9,937	5,233	1,123	1,460
U Munich	46,432	9,317	12,875	40,019	7,627	10,775	6,413	1,690	2,100
U Frankfurt a.M.	40,383	5,457	8,636	34,021	4,487	7,261	6,362	970	1,375
U Münster	38,249	5,154	8,901	35,276	4,494	8,084	2,973	660	817
U Hamburg	38,074	5,865	8,797	33,448	4,897	7,598	4,626	968	1,199
U Duisburg-Essen	37,575	6,746	9,281	31,935	5,617	7,823	5,640	1,129	1,458
U Bochum	36,733	4,734	7,347	32,046	3,877	6,221	4,687	857	1,126
U Mainz	36,188	4,207	5,816	32,290	3,495	5,166	3,898	712	650
TH Aachen	35,853	6,887	9,514	30,422	5,487	7,872	5,431	1,400	1,642
TU Dresden	34,010	6,025	9,317	30,482	4,955	8,080	3,528	1,070	1,237
FU Berlin	33,286	5,600	9,747	26,945	3,450	7,153	6,341	2,150	2,594
U Erlangen-Nuremberg	32,354	6,837	9,102	29,765	6,133	8,258	2,589	704	844
TU Munich	30,821	8,500	11,870	25,728	6,696	9,716	5,093	1,804	2,154
TU Berlin	29,711	4,094	6,930	23,996	2,899	5,413	5,715	1,195	1,517
HU Berlin	29,176	4,580	6,902	24,312	2,941	5,893	4,864	1,639	1,009
U Bonn	28,724	5,175	7,906	25,036	4,268	6,802	3,688	907	1,104
U Heidelberg	28,047	4,702	6,030	23,395	3,561	5,266	4,652	1,141	764
Baden Wuerttemberg Cooperative State University (FH)	27,758	10,820	11,352	27,101	10,553	11,071	657	267	281
U Dortmund	26,625	5,017	7,279	23,953	4,471	6,628	2,672	546	651
Top 20 in total	728,165	121,728	183,763	636,390	99,669	158,037	91,775	22,059	25,726
Universities in total	1,546,136	268,729	401,018	1,364,182	222,320	348,086	181,954	46,409	52,932
HEIs in total	2,380,974	445,320	621,599	2,115,682	378,656	547,834	265,292	66,664	73,765

Source: German Federal Statistics Office, subject series 11 (Statistisches Bundesamt, Fachserie 11), winter semester 2011/12

* See definitions: university semester, subject semester

› Female students at the 20 German universities with the highest number of students in the winter semester 2011/12

Higher Education Institution	Students								
	Total			German students			Foreign students		
	Total	in their 1st ... semester		Total	in their 1st ... semester		Total	in their 1st ... semester	
		university*	subject*		university*	subject*		university*	subject*
FeU Hagen	33,342	2,970	7,557	29,795	2,319	6,592	3,547	651	965
U Cologne	26,681	4,016	6,661	23,336	3,287	5,728	3,345	729	933
U Munich	28,609	5,764	7,760	24,334	4,651	6,392	4,275	1,113	1,368
U Frankfurt a.M.	23,583	3,239	5,019	19,534	2,606	4,141	4,049	633	878
U Münster	20,219	2,716	4,891	18,498	2,295	4,378	1,721	421	513
U Hamburg	21,192	3,145	4,839	18,315	2,537	4,083	2,877	608	756
U Duisburg-Essen	18,949	3,178	4,343	16,340	2,634	3,653	2,609	544	690
U Bochum	17,348	2,056	3,330	14,974	1,600	2,758	2,374	456	572
U Mainz	21,126	2,571	3,520	18,526	2,057	3,033	2,600	514	487
TH Aachen	10,980	1,992	2,898	9,134	1,500	2,322	1,846	492	576
TU Dresden	14,269	2,252	3,797	12,646	1,757	3,206	1,623	495	591
FU Berlin	19,354	3,278	5,726	15,413	1,955	4,110	3,941	1,323	1,616
U Erlangen-Nuremberg	16,137	3,335	4,391	14,715	2,952	3,931	1,422	383	460
TU Munich	9,876	2,458	3,644	8,153	1,842	2,910	1,723	616	734
TU Berlin	9,490	1,321	2,397	7,269	790	1,720	2,221	531	677
HU Berlin	16,645	2,678	4,058	13,532	1,644	3,407	3,113	1,034	651
U Bonn	15,447	2,922	4,458	13,352	2,372	3,785	2,095	550	673
U Heidelberg	15,664	2,581	3,249	12,755	1,886	2,759	2,909	695	490
Baden Wuerttemberg Cooperative State University (FH)	12,153	4,455	4,665	11,834	4,323	4,527	319	132	138
U Dortmund	12,521	2,178	3,336	11,396	1,946	3,070	1,125	232	266
Top 20 in total	363,585	59,105	90,539	313,851	46,953	76,505	49,734	12,152	14,034
Universities in total	779,119	133,049	201,052	683,791	107,836	172,497	95,328	25,213	28,555
HEIs in total	1,125,602	207,614	292,859	993,482	172,735	254,564	132,120	34,879	38,295

Source: German Federal Statistics Office, subject series 11 (Statistisches Bundesamt, Fachserie 11), winter semester 2011/12

* See definitions: university semester, subject semester

› Development in the number of students, with a breakdown of figures,

Reporting period academic year (summer + winter semester)	Starting point (previous winter semester)	Developments in the reporting period					
		New enrolments (First-time enrolments + students transferring from another university = inflow)			Students transferring from another university		
		N	Change compared to previous year		N	Change compared to previous year	
			Absolute number	in %		Absolute number	in %
1981/82	38,979	8,331	-	-	2,566	-	-
1982/83	40,800	8,703	372	4.5	2,719	153	6.0
1983/84	42,802	8,578	-125	-1.4	2,690	-29	-1.1
1984/85	44,238	8,018	-560	-6.5	2,899	209	7.8
1985/86	44,449	7,911	-107	-1.3	2,985	86	3.0
1986/87	44,449	7,664	-247	-3.1	2,746	-239	-8.0
1987/88	43,940	8,186	522	6.8	2,630	-116	-4.2
1988/89	44,477	8,354	168	2.1	2,639	9	0.3
1989/90	45,151	7,814	-540	-6.5	2,375	-264	-10.0
1990/91	44,225	8,305	491	6.3	2,250	-125	-5.3
1991/92	44,511	8,279	-26	-0.3	2,202	-48	-2.1
1992/93	44,960	7,534	-745	-9.0	2,097	-105	-4.8
1993/94	44,776	7,370	-164	-2.2	2,073	-24	-1.1
1994/95	44,432	7,512	142	1.9	2,167	94	4.5
1995/96	44,641	7,643	131	1.7	2,256	89	4.1
1996/97	44,928	7,895	252	3.3	2,234	-22	-1.0
1997/98	45,163	7,761	-134	-1.7	2,314	80	3.6
1998/99	45,647	7,504	-257	-3.3	2,311	-3	-0.1
1999/00	45,199	7,611	107	1.4	2,301	-10	-0.4
2000/01	44,688	7,694	83	1.1	2,256	-45	-2.0
2001/02	43,860	8,387	693	9.0	2,362	106	4.7
2002/03	43,822	8,396	9	0.1	2,302	-60	-2.5
2003/04	43,800	8,586	190	2.3	2,432	130	5.6
2004/05	43,478	7,858	-728	-8.5	1,933	-499	-20.5
2005/06	39,227	7,997	139	1.8	2,032	99	5.1
2006/07	39,822	7,925	-72	-0.9	1,916	-116	-5.7
2007/08	40,306	6,280	-1,645	-20.8	1,616	-300	-15.7
2008/09	38,170	6,274	-6	-0.1	1,612	-4	-0.2
2009/10	37,226	6,779	505	8.0	1,863	251	15.6
2010/11	36,763	7,750	971	14.3	2,320	457	24.5
2011/12	37,197	9,013	1,263	16.3	3,099	779	33.6
2012/13	39,028	8,724	-289	-3.2	2,740	-359	-11.6

for each winter semester

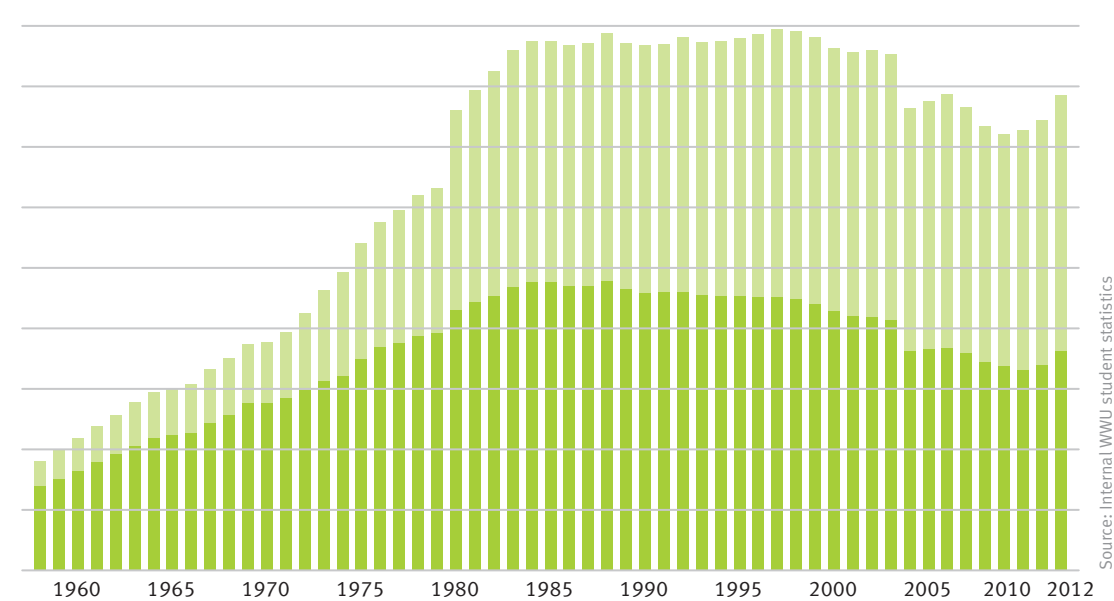
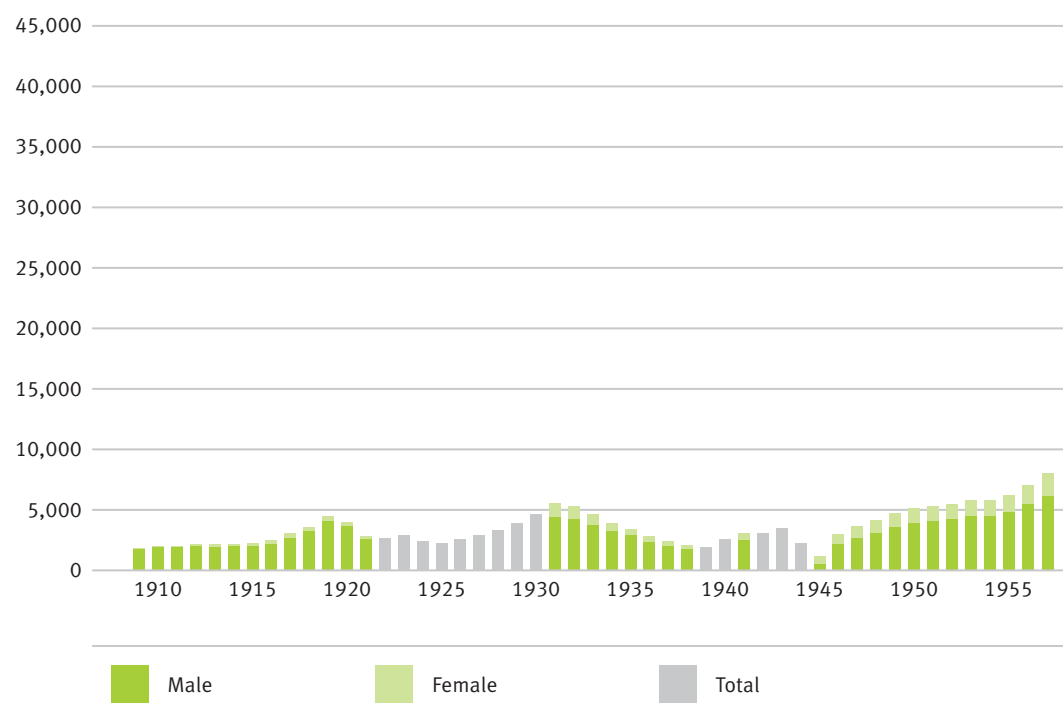
Developments in the reporting period			Winter semester			
Deregistrations (= outflow)			Semester	Total	Change compared to previous year	
N	Change compared to previous year				Absolute number	in %
	Absolute number	in %				
6,510	-	-	1981/82	40,800	-	-
6,701	191	2.9	1982/83	42,802	2,002	4.9
7,142	441	6.6	1983/84	44,238	1,436	3.4
7,807	665	9.3	1984/85	44,449	211	0.5
7,911	104	1.3	1985/86	44,449	0	0.0
8,173	262	3.3	1986/87	43,940	-509	-1.1
7,649	-524	-6.4	1987/88	44,477	537	1.2
7,680	31	0.4	1988/89	45,151	674	1.5
8,740	1,060	13.8	1989/90	44,225	-926	-2.1
8,019	-721	-8.2	1990/91	44,511	286	0.6
7,830	-189	-2.4	1991/92	44,960	449	1.0
7,718	-112	-1.4	1992/93	44,776	-184	-0.4
7,714	-4	-0.1	1993/94	44,432	-344	-0.8
7,303	-411	-5.3	1994/95	44,641	209	0.5
7,356	53	0.7	1995/96	44,928	287	0.6
7,660	304	4.1	1996/97	45,163	235	0.5
7,277	-383	-5.0	1997/98	45,647	484	1.1
7,952	675	9.3	1998/99	45,199	-448	-1.0
8,122	170	2.1	1999/00	44,688	-511	-1.1
8,522	400	4.9	2000/01	43,860	-828	-1.9
8,425	-97	-1.1	2001/02	43,822	-38	-0.1
8,418	-7	-0.1	2002/03	43,800	-22	-0.1
8,908	490	5.8	2003/04	43,478	-322	-0.7
12,312	3,404	38.2	2004/05	39,227	-4,251	-9.8
7,402	-4,910	-39.9	2005/06	39,822	595	1.5
7,441	39	0.5	2006/07	40,306	484	1.2
8,416	975	13.1	2007/08	38,170	-2,136	-5.3
7,218	-1,198	-14.2	2008/09	37,226	-944	-2.5
7,242	24	0.3	2009/10	36,763	-463	-1.2
7,316	74	1.0	2010/11	37,197	434	1.2
7,182	-134	-1.8	2011/12	39,028	1,831	4.9
6,965	-217	-3.0	2012/13	40,787	1,759	4.5

› WWU students by department in the winter semester 2012/13

Department	Students		
	Male	Female	Total
DEP 01 Protestant Theology	380	654	1,034
DEP 02 Roman Catholic Theology	735	914	1,649
DEP 03 Law	2,386	2,424	4,810
DEP 04 Economics	2,912	1,717	4,629
DEP 05 Medicine	1,209	1,805	3,014
DEP 06 Education and Social Studies	1,418	2,363	3,781
DEP 07 Psychology and Sport Studies	668	1,027	1,695
DEP 08 History and Philosophy	1,862	1,875	3,737
DEP 09 Philologies	1,533	4,018	5,551
DEP 10 Mathematics and Computer Sciences	1,503	1,024	2,527
DEP 11 Physics	1,131	511	1,642
DEP 12 Chemistry and Pharmacy	1,443	1,319	2,762
DEP 13 Biology	627	1,119	1,746
DEP 14 Geosciences	970	690	1,660
DEP 15 Music Department	109	157	266
Interdisciplinary Course of Studies	88	196	284
Total	18,974	21,813	40,787

New enrolments			Foreign students		
Male	Female	Total	Male	Female	Total
47	101	148	15	12	27
81	120	201	36	26	62
303	417	720	121	165	286
640	512	1,152	192	237	429
92	169	261	148	155	303
180	438	618	129	312	441
68	181	249	19	55	74
306	381	687	78	141	219
301	929	1,230	155	361	516
248	172	420	77	39	116
286	197	483	47	34	81
259	192	451	132	87	219
119	246	365	63	119	182
167	146	313	47	45	92
20	32	52	59	99	158
10	40	50	8	23	31
3,127	4,273	7,400	1,326	1,910	3,236

› Number of students from 1910–2012 (average per year)



› WWU students* by target degree (in their main subject)

* regular students only (excluding students currently on leave, guest students, cross-registered students from other universities and foreign students attending German language programmes)

Target degree	Winter semester								
	04/05	05/06	06/07	07/08	08/09	09/10	10/11	11/12	12/13
Diploma	10,474	10,136	9,294	7,104	5,471	4,216	2,833	1,806	1,193
State examination	7,212	7,245	7,282	6,928	6,982	6,817	6,716	6,911	7,194
Ecclesiastical degree + Licentiate + Magister Theologiae	227	227	228	280	298	290	489	736	1,155
Magister Artium (M.A.)	5,935	5,732	4,560	3,495	2,850	2,186	1,582	1,153	901
PhD/MD (Doctoral degree)	4,389	4,238	4,294	4,381	4,413	4,487	4,805	4,906	4,870
Bachelor (BA, BSc)	537	1,115	2,129	3,592	4,897	5,955	6,458	7,470	8,252
Bachelor with two equal subjects (BA 2-HF) (without teaching degrees)*	.	217	645	825	989	1,099	1,385	1,679	1,905
Master (MA, MSc)	38	60	145	216	494	1,078	1,995	2,888	3,574
Master of Further Education**	46	134	161	162
others	419	482	495	601	893	1,173	983	942	873
Teaching degree for elementary school: LA Primarstufe/ LA GHR, G/BA KJ (G)	1,995	2,118	2,048	1,762	1,461	1,059	1,049	1,049	1,051
Teaching degree for elementary, secondary and comprehensive schools: LA Sekundarstufe I/LA GHR, HRGe/BA KJ (HRGe)	1,200	1,342	1,422	1,361	1,235	1,101	1,153	1,161	1,188
Teaching degree for grammar/comprehensive schools: LA Sekundarstufe II/I/LA Gym/Ges/BA-2 HF	5,014	5,259	6,024	5,790	5,404	4,673	4,541	5,018	5,150
Teaching degrees in total	8,209	8,719	9,494	8,913	8,100	6,833	6,743	7,228	7,389
Master of Education for elementary school (MEd, G)	155	382	368	386	395
Master of Education for secondary school (MEd, HRGe)	61	197	209	237	281
Master of Education for secondary school (Med, GyGe/BAB/BK2F)	178	794	1,196	1,351	1,463
Master of Education in total	394	1,373	1,773	1,974	2,139
WWU in total	37,440	38,171	38,566	36,335	35,781	35,553	35,897	37,854	39,608
Bachelor of Music (BM)	17	50	65	80	67	99	79	71	104
Master of Music	40	49	55
Graduate Musician	100	94	92	76	48	68	73	61	47
Graduate Music Teacher	91	74	56	44	23	25	32	32	24
WWU + Music Department	37,648	38,389	38,779	36,535	35,919	35,745	36,121	38,067	39,838

Source: Internal WWU student statistics: winter semester 2012/13

. No possibility of studying for this particular type of degree at WWU.

* On the basis of empirical analyses of students in the polyvalent Bachelor courses with two subjects, one-fifth of students of Protestant or Roman Catholic Religious Studies, History, English Philology, German Philology and Romance Studies and Language were taken into account, as were all students of Religious Studies, Economics, Political Sciences, Sociology, Archaeology-History-Landscape, Classical and Early Christian Archaeology, Art History, Cultural and Social Anthropology, Musicology, Regional Studies Eastern Central Europe, Arabic and Islamic Studies, Ancient Cultures of Egypt and the Middle East, Dutch-German Studies, Scandinavian Studies, Communication Studies, Islamic Theology and Chinese Studies.

** Students taking a Master's degree in further education were included in the WWU student statistics for the first time in the winter semester 2009/10.

› Students at WWU by department/subject from 2004–2012

Department/Subject	Winter semester								
	04/05	05/06	06/07	07/08	08/09	09/10	10/11	11/12	12/13
Protestant Theology	421	435	429	479	446	461	618	894	1,034
Jewish Studies	1	1	1	0	1	0	0	0	0
DEP 01 Protestant Theology	422	436	430	479	447	461	618	894	1,034
DEP 02 Roman Catholic Theology	822	802	779	855	841	851	1,008	1,344	1,606
DEP 03 Law	4,527	4,540	4,508	4,297	4,332	4,285	4,384	4,609	4,804
Household Economics	41	37	34	21	13	10	6	4	4
Information Systems	821	786	772	738	694	681	687	666	687
Business Administration/Economics	4,123	3,987	3,860	3,619	3,576	3,692	3,646	3,793	3,901
DEP 04 Economics	4,985	4,810	4,666	4,378	4,283	4,383	4,339	4,463	4,592
Medicine	2,299	2,195	2,200	2,171	2,157	2,113	2,121	2,195	2,251
Dentistry	712	719	728	713	717	731	748	741	763
DEP 05 Medicine	3,011	2,914	2,928	2,884	2,874	2,844	2,869	2,936	3,014
Communication Studies	933	940	945	901	897	769	678	632	619
Education	1,532	1,609	1,815	1,911	2,090	2,222	2,001	1,766	1,676
Social Sciences	2,213	2,201	2,101	1,904	1,760	1,621	1,507	1,485	1,512
of which Political Sciences	1,431	1,421	1,393	1,299	1,236	1,147	1,074	1,065	1,088
of which Sociology	544	561	509	440	385	354	330	309	306
of which Social Sciences (Teaching degree)	238	219	199	165	139	120	103	111	118
DEP 06 Education and Social Studies	4,678	4,750	4,861	4,716	4,747	4,612	4,186	3,883	3,807
Psychology	840	878	934	949	966	1,016	1,027	1,025	990
Sport Studies	831	828	820	784	728	724	740	717	705
FB 07 Psychology and Sport Studies	1,671	1,706	1,754	1,733	1,694	1,740	1,767	1,742	1,695
Archaeology	168	153	123	108	111	113	109	122	118
Byzantine Studies	10	7	8	9	7	9	10	10	9
History	1,448	1,482	1,544	1,436	1,428	1,334	1,495	1,508	1,543
Classical Philology	205	228	269	272	285	298	334	356	430
Art History	433	426	407	361	356	334	404	372	361
Medieval Latin Philology	4	6	5	5	5	6	6	5	5

Continued ›

Department/Subject	Winter semester								
	04/05	05/06	06/07	07/08	08/09	09/10	10/11	11/12	12/13
Music	157	138	115	128	132	156	170	174	163
Musicology	89	74	78	79	72	72	95	128	163
Philosophy	353	327	335	305	315	324	399	407	436
Textile Design	30	22	7	7	0	0	0	0	0
Prehistory and Early History	139	143	133	116	119	116	122	140	143
Ethnology	208	204	193	216	221	207	208	216	255
Folklore and European Ethnology	95	115	103	87	84	84	84	86	80
DEP 08 History and Philosophy	3,339	3,325	3,320	3,129	3,135	3,053	3,436	3,524	3,706
Egyptology/Coptology	115	117	76	55	42	32	31	27	26
General Linguistics	115	128	105	88	64	51	40	39	40
English Philology	1,347	1,372	1,428	1,271	1,168	1,086	1,045	1,056	1,065
Baltic Studies	10	9	8	5	1	1	1	1	0
German Philology/Old and New German Literature	3,499	3,743	3,996	3,611	3,171	2,736	2,547	2,553	2,608
Indo-Germanic Linguistics	24	25	16	13	11	8	7	5	6
Indian Studies	9	5	2	1	1	0	0	0	1
Arabic and Islamic Studies	107	111	129	126	138	139	156	209	328
Dutch Philology	105	111	109	112	108	130	138	134	151
Ancient Oriental Studies	29	27	23	37	40	50	52	85	117
Romance Language and Literature	663	664	748	685	716	738	734	733	769
Sinology	82	118	93	80	82	85	98	109	141
Scandinavian Studies	86	107	98	83	86	88	106	128	176
Slavonic Studies	76	61	45	38	29	40	51	64	53
DEP 09 Philologies	6,267	6,598	6,876	6,205	5,657	5,184	5,006	5,143	5,481
Computer Sciences	322	414	486	434	433	446	444	498	556
Mathematics	1,883	2,000	2,174	2,036	2,023	1,974	1,962	1,938	1,971
DEP 10 Mathematics and Computer Sciences	2,205	2,414	2,660	2,470	2,456	2,420	2,406	2,436	2,527
Astronomy	1	1	1	1	1	1	1	1	1
Geophysics	82	104	132	97	80	120	119	205	313
Physics	817	883	910	860	789	812	831	1,086	1,289
Technology	43	32	39	42	37	45	35	30	24
DEP 11 Physics	943	1,020	1,082	1,000	907	978	986	1,322	1,627

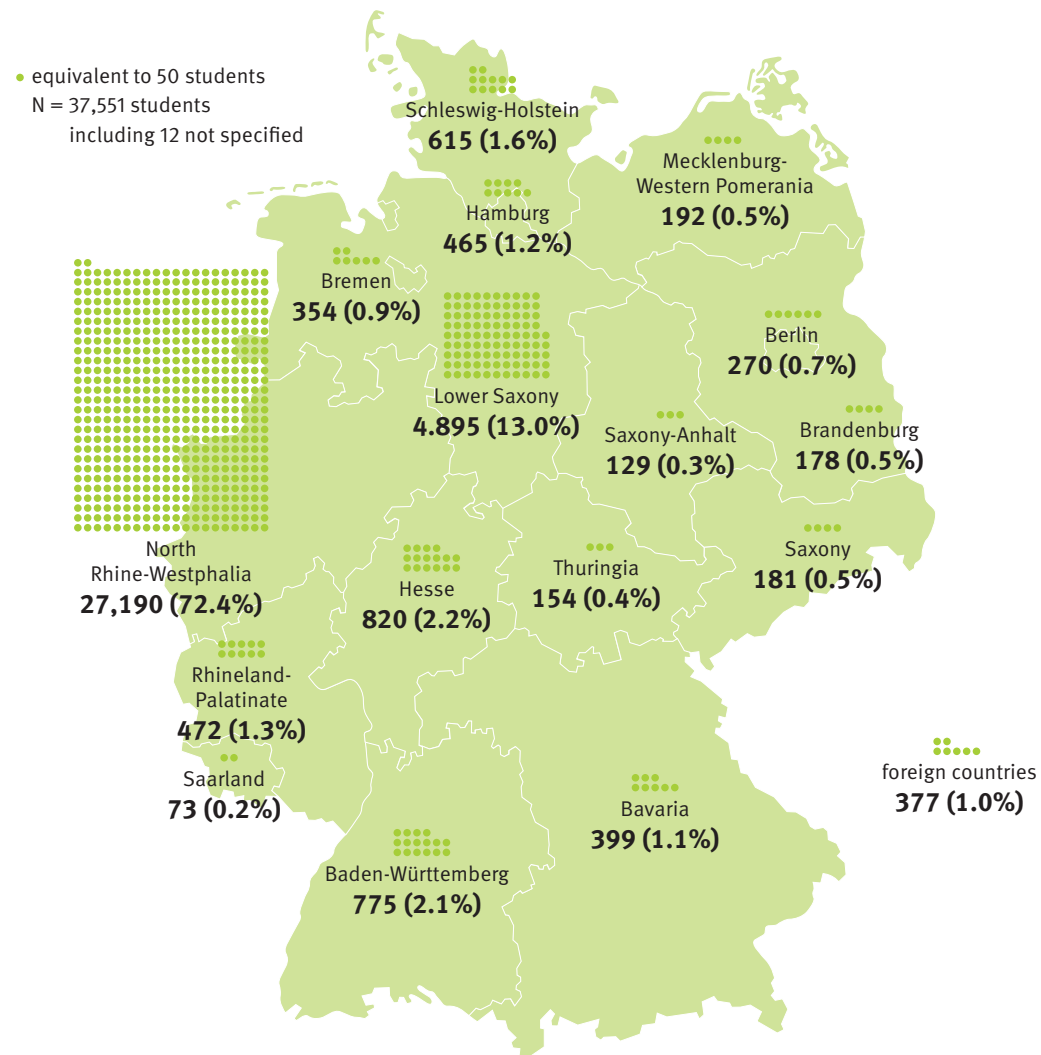
Continued >

Department/Subject	Winter semester								
	04/05	05/06	06/07	07/08	08/09	09/10	10/11	11/12	12/13
Chemistry	1,263	1,358	1,456	1,420	1,375	1,360	1,441	1,723	1,678
Food Chemistry	184	206	230	229	239	238	229	215	216
Pharmacy	763	792	808	776	780	818	841	864	868
DEP 12 Chemistry and Pharmacy	2,210	2,356	2,494	2,425	2,394	2,416	2,511	2,802	2,762
DEP 13 Biology	1,536	1,548	1,506	1,414	1,424	1,478	1,523	1,636	1,746
Geography	1,406	1,453	1,469	1,400	1,317	1,300	1,329	1,267	1,300
Geosciences	254	301	269	255	278	289	351	349	353
Planetology	5	7	8	6	8	6	8	7	7
DEP 14 Geosciences	1,665	1,761	1,746	1,661	1,603	1,595	1,688	1,623	1,660
DEP 15 Music Department	215	226	223	205	187	246	264	270	297
General Knowledge for Primary School (Social Studies)	16	13	7	6	5	5	4	4	4
General Knowledge for Primary School (Social Sciences)	3	9	10	11	12	15	15	16	13
General Knowledge for Primary School (general)	426	338	228	92	43	27	21	17	16
General Knowledge for Primary School (Natural Sciences/Technology)	10	6	6	5	5	3	3	3	3
General Knowledge for Primary School (Natural Sciences)	5	7	7	9	12	13	15	14	12
Dutch Studies	196	190	165	142	120	105	96	275	268
Regional Studies Latin America	12	6	1	1
Religious Studies	28	47	49	53	46	48	52	72	113
Courses of study not assigned to a particular department (incl. General Knowledge for Primary School)	696	616	473	319	243	216	206	401	429
WWU in total	39,227	39,822	40,306	38,170	37,224	36,762	37,197	39,028	40,787
Female students	20,713	21,186	21,589	20,363	19,886	19,568	19,884	20,718	21,813
Percentage (%)	52.8	53.2	53.6	53.3	53.4	53.2	53.5	53.1	53.5
Foreign students	3,691	3,551	3,489	3,161	3,022	2,936	3,047	3,135	3,236
Percentage (%)	9.4	8.9	8.7	8.3	8.1	8.0	8.2	8.0	7.9

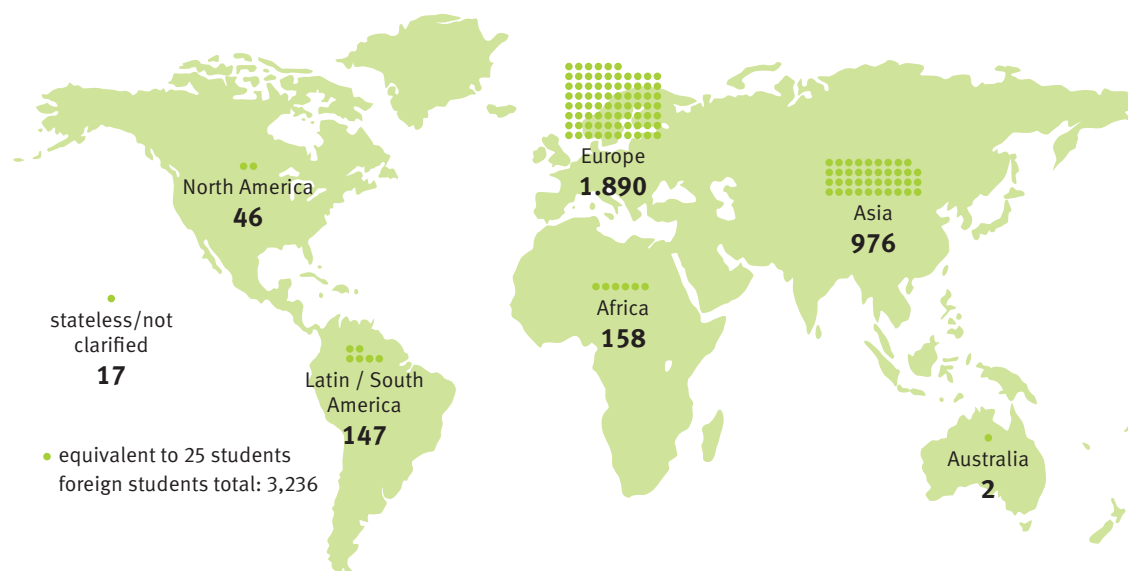
• No possibility of studying this particular course at WWU

Source: Internal WWU Student Statistics: winter semester 2012/13

› Origin of German students in the winter semester 2012/13 by the Federal State where they obtained their general qualification for university entrance



› Regional origin of foreign students in the winter semester 2012/13 by continent



Source: Internal WWU Student Statistics: winter semester 2012/13

B. Number of First-Year Students

› First-year students* at WWU by target degree (in their main subject)

* regular students only (excluding students currently on leave, guest students, cross-registered students from other universities and foreign students attending German language programmes)

Target degree	Academic year (summer semester and following winter semester)									
	2004	2005	2006	2007	2008	2009	2010	2011	2012	
Diploma	2,168	1,968	1,395	395	105	3	0	0	1	
State examination	975	1,071	1,059	1,059	1,102	1,079	1,088	1,174	1,172	
Ecclesiastical degree + Licentiate + Magister Theologiae	46	54	41	120	62	90	170	422	635	
Magister Artium (M.A.)	1,365	1,103	220	27	9	0	0	0	0	
PhD/MD (Doctoral degree)	259	386	401	450	422	464	544	496	405	
Bachelor (BA, BSc)	277	685	1,288	1,984	2,001	2,319	2,294	3,086	3,021	
Bachelor with two equal subjects (BA 2-HF) (without teaching degrees)*	.	215	473	321	315	380	579	641	695	
Master (MA, MSc)	25	36	100	112	320	677	1,103	1,281	1,301	
Master of Further Education**	13	45	34	69	
Others	540	388	388	465	691	712	561	494	535	

Teaching degree for elementary school: LA Primarstufe/ LA GHR, G/BA KJ (G)	354	382	309	217	263	229	284	261	260
Teaching degree for elementary, secondary and comprehensive schools: LA Sekundarstufe I/LA GHR, HRGe/BA KJ (HRGe)	321	293	259	183	199	231	335	291	295
Teaching degree for grammar/comprehensive schools: LA Sekundarstufe II/I/LA Gym/Ges/BA-2 HF	1,250	1,026	1,506	812	830	898	1,250	1,496	1,193
Teaching degrees in total	1,925	1,701	2,074	1,212	1,292	1,358	1,869	2,048	1,893

Master of Education for elementary school (MEd, G)	154	274	191	192	178
Master of Education for secondary school (MEd, HRGe)	61	144	111	130	139
Master of Education for secondary school (MEd, GyGe/BAB/BK2F)	178	624	499	433	510
Master of Education in total	393	1,042	801	755	827

WWU in total	7,580	7,607	7,439	6,145	6,712	8,137	9,054	10,431	10,554
---------------------	--------------	--------------	--------------	--------------	--------------	--------------	--------------	---------------	---------------

Bachelor of Music (BM)	17	31	24	16	15	27	25	17	28
Master of Music	17	23	20
Graduate Musician	15	2	6	0	0	7	8	0	0
Graduate Music teacher	8	1	0	0	0	8	2	0	0

WWU + Music Department	7,620	7,641	7,469	6,161	6,727	8,179	9,106	10,471	10,602
-------------------------------	--------------	--------------	--------------	--------------	--------------	--------------	--------------	---------------	---------------

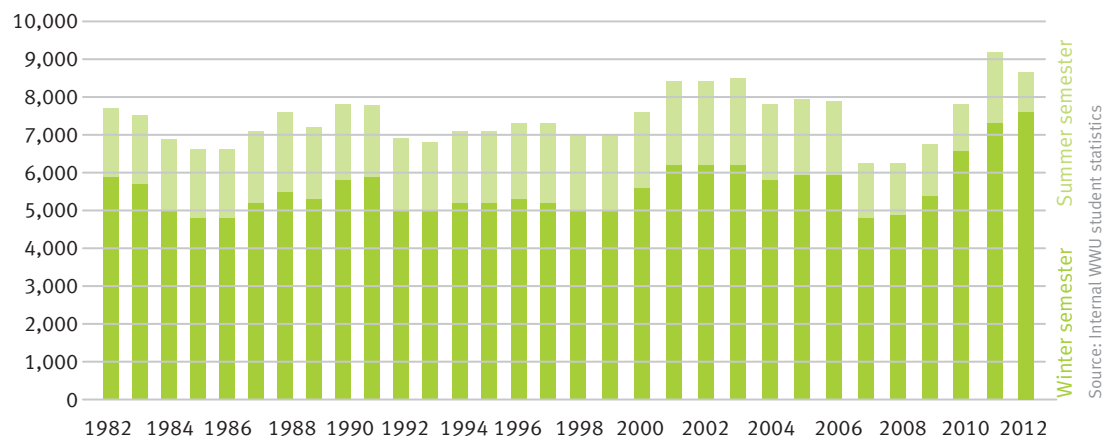
• No possibility of studying for this particular type of degree at WWU.

* On the basis of empirical analyses of students in the polyvalent Bachelor courses with two subjects, one-fifth of students of Protestant or Roman Catholic Religious Studies, History, English Philology, German Philology and Romance Studies and Language were taken into account, as were all students of Religious Studies, Economics, Political Sciences, Sociology, Archaeology-History-Landscape, Classical and Early Christian Archaeology, Art History, Cultural and Social Anthropology, Musicology, Regional Studies Eastern Central Europe, Arabic and Islamic Studies, Ancient Cultures of Egypt and the Middle East, Dutch-German Studies, Scandinavian Studies, Communication Studies, Islamic Theology and Chinese Studies.

** Students taking a Master's degree in further education were included in the WWU student statistics for the first time in the winter semester 2009/10.

Source: Internal WWU student statistics: winter semester 2012/13

› Number of first-year students 1982–2012



2012 = summer semester 2012 and winter semester 2012/13

C. Capacity

› Development of capacity utilization (excluding medicine) by department/subject (in %)

DEP	Department/Subject	academic year (winter semester and following summer semester)									
		03/04	04/05	05/06	06/07	07/08	08/09	09/10	10/11	11/12	
01	Protestant Theology	46	54	58	67	68	61	60	74	101	
02	Roman Catholic Theology	67	64	72	77	80	72	68	78	101	
03	Law	124	125	132	129	116	120	113	113	121	
04	Information Systems	126	110	114	108	116	153	143	132	126	
	Economics	107	95	98	113	120	113	109	113	119	
06	Educational studies	96	
	Communication Studies	133	125	125	136	126	157	136	108	102	
	Education	110	95	102	83	90	100	107	101	108	
	Social Sciences	117	117	139	137	128	127	107	104	103	
07	Psychology	101	96	103	106	106	107	105	100	113	
	Sport Studies	100	117	125	127	110	87	84	91	95	
08	Archaeology	105	150	140	104	87	81	65	58	79	
	Byzantine Studies	39	31	39	27	26	21	15	11	17	
	History	110	92	101	101	91	78	68	83	83	
	Classical Philology	89	119	127	126	142	107	91	112	93	
	Art History	89	93	81	90	79	78	70	103	90	
	Music Department	75	72	75	63	64	80	97	91	106	
	Musicology	48	23	6	24	29	45	33	60	67	

Continued ›

DEP	Department/Subject	academic year (winter semester and following summer semester)									
		03/04	04/05	05/06	06/07	07/08	08/09	09/10	10/11	11/12	
	Philosophy	108	84	93	85	73	64	62	80	79	
	Prehistory and Early History	73	93	107	85	72	74	69	73	96	
	Ethnology	99	99	112	89	97	82	71	64	63	
	Folklore and European Ethnology	96	92	114	135	153	135	140	100	121	

09	General Linguistics	110	104	114	85	43	34	20	8	9
	English Philology	118	105	125	135	115	104	92	91	95
	German Philology/Old and New German Literature	127	122	140	141	128	102	90	88	96
	Indo-Germanic Linguistics	42	54	57	33	26	17	9	7	3
	Arabic and Islamic Studies	70	96	85	90	106	88	66	44	62
	Dutch Studies	179	118	102	106	52	48	30	50	261
	Dutch Philology	109	82	87	71	72	59	50	49	76
	Romance Language and Literature	116	93	103	102	101	88	76	82	84
	Sinology	60	84	106	70	57	57	60	74	95
	Scandinavian Studies	39	50	55	51	44	58	51	93	110
	Slavonic Studies/Baltic Studies	20	13	6	10	28	49	40	24	26
	Egyptology/Coptology	107	119	131	64
	Ancient Oriental Studies	21	32	33	23
Ancient Oriental Studies and Egyptology	.	.	.	54	46	44	42	39	74	

10	Mathematics and Computer Sciences	116	110	121	130	111	105	106	96	106
----	-----------------------------------	-----	-----	-----	-----	-----	-----	-----	----	-----

11	Geophysics	71	63	79	98	71	62	80	88	155
	Physics	71	75	76	78	73	63	71	72	98
	Technology	59	57	54	42	36	38	46	47	51

12	Chemistry	105	100	109	107	103	94	89	87	114
	Food Chemistry	79	78	92	114	123	127	117	104	102
	Pharmacy	100	95	99	100	101	107	114	113	110

13	Biology	109	94	92	88	84	81	87	93	92
----	---------	-----	----	----	----	----	----	----	----	----

14	Geography	120	120	121	121	107	108	108	118	126
	Geoscience	76	78	98	92	89	72	77	93	97

	Religious Studies	14	21	28	49	54	44	39	29	73
--	-------------------	----	----	----	----	----	----	----	----	----

	Humanities	94	90	98	97	92	87	81	84	94
	Social Sciences	115	110	117	122	119	121	113	113	118
	Natural Sciences	100	96	101	101	94	88	91	91	105

	WWU in total	100	96	103	103	98	94	91	92	103
--	---------------------	------------	-----------	------------	------------	-----------	-----------	-----------	-----------	------------

• No possibility of studying this subject at WWU

Source: Calculations by WWU based on official student statistics and internal student statistics as well as calculations by the Ministry of Science studying and teaching //

D. Examinations and Graduates

› The 20 German universities with the highest number of examinations

Higher Education Institution	Total		Female	
	Rank	N	N	in %
U Munich	1	8,437	5,269	62.5
Baden Wuerttemberg Cooperative State University (FH)	2	7,921	3,485	44.0
U Münster	3	7,140	4,038	56.6
U Hamburg	4	6,780	4,000	59.0
TU Dresden	5	6,199	3,155	50.9
U Cologne	6	6,177	3,678	59.5
TU Munich	7	6,045	2,065	34.2
U Leipzig	8	5,726	3,613	63.1
TH Aachen	9	5,717	1,957	34.2
FU Berlin	10	5,711	3,579	62.7
U Erlangen-Nuremberg	11	5,604	2,955	52.7
U Bochum	12	5,450	2,748	50.4
U Duisburg-Essen	13	5,172	2,751	53.2
U Heidelberg	14	5,053	2,892	57.2
U Göttingen	15	4,928	2,570	52.2
U Bonn	16	4,822	2,779	57.6
U Mainz	17	4,779	2,903	60.7
U Frankfurt a.M.	18	4,662	2,746	58.9
HU Berlin	19	4,489	2,734	60.9
U Gießen	20	4,381	2,944	67.2
Top 20 in total		115,193	62,861	54.6
Universities in total		245,890	132,601	53.9
HEIs in total		392,171	198,737	50.7

passed (by type of degree) in the academic year 2011

of which							
Diploma (U) and equivalent degrees		Teaching degrees		Bachelor		Master	
Rank	N	Rank	N	Rank	N	Rank	N
1	3,800	5	1,115	5	1,851	16	467
171	0	97	0	1	7,921	288	0
5	2,483	3	1,465	3	1,936	10	560
7	2,415	6	1,113	9	1,624	8	586
2	2,968	14	834	20	1,285	20	424
3	2,537	4	1,428	21	1,277	63	219
11	2,222	61	170	7	1,769	1	973
10	2,228	9	1,005	10	1,549	18	451
12	2,219	51	273	4	1,874	12	550
13	2,070	24	610	11	1,541	3	803
9	2,261	12	874	13	1,403	40	315
28	1,316	39	427	2	2,309	2	921
26	1,447	7	1,058	8	1,688	6	637
14	2,006	28	572	40	1,029	39	318
24	1,490	53	245	6	1,805	5	641
6	2,471	91	3	15	1,386	37	323
4	2,486	21	747	81	748	80	183
8	2,289	21	747	63	837	104	138
22	1,595	16	796	38	1,035	9	585
25	1,448	13	864	25	1,171	21	420
	41,751		14,346		36,038		9,514
	88,864		34,397		71,189		24,367
	94,018		38,758		152,484		41,292

Source: German Federal Statistics Office, subject series 11 (Statistisches Bundesamt, Fachserie 11)

› Graduates by subject groups in comparison with all universities in NRW (excluding medicine) – parameter graduates in the performance-based budgeting for the financial year 2013

Higher Education Institution	Weighted number of graduates (average of the years 2009–2011) *				%
	Humanities and Social Sciences	Natural Sciences	Engineering	Graduates in total	
U Münster	5,285	2,273	16	7,574	14.81
U Cologne	4,917	1,093	6	6,016	11.76
U Bochum	3,180	1,128	534	4,842	9.47
U Bonn	2,691	1,742	52	4,485	8.77
U Duisburg-Essen	2,874	1,102	448	4,423	8.65
TH Aachen	996	1,489	1,832	4,317	8.44
U Dortmund	1,993	1,087	654	3,734	7.30
U Bielefeld	2,565	972	0	3,537	6.92
U Siegen	1,695	414	327	2,436	4.76
U Düsseldorf	1,672	762	0	2,434	4.76
U Paderborn	1,480	627	299	2,407	4.71
U Wuppertal	1,264	386	526	2,176	4.26
FeU Hagen	1,578	199	68	1,845	3.61
DSH Cologne	910	5	0	915	1.79
Total	33,099	13,281	4,762	51,143	100.00

Source: MIWF NRW – Department 111

* Bachelor and Diploma with weighting factor 1.0; Master = 0.5, only graduates from (full) degree programmes; graduates within the regular duration of study are given the factor 2 (exception: graduates in part-time studies from the FeU Hagen are given the factor 1.33), otherwise factor 1

› Graduates in their main subject by department/course of study in the academic years 2003–2011

without doctoral degrees and courses of further education

Department/Course of study	Academic year								
	2003	2004	2005	2006	2007	2008	2009	2010	2011
DEP 01 Protestant Theology	66	46	69	50	67	55	42	63	49
Canon Law	6	12	10	10	5	0	0	5	3
Roman Catholic Theology	147	142	131	125	147	142	108	124	94
DEP 02 Roman Catholic Theology	153	154	141	135	152	142	108	129	97
DEP 03 Law	586	567	471	587	677	468	841	470	572
Household Economics	12	8	14	16	37	32	8	14	6
Information Systems	51	62	86	93	138	163	191'	134'	131
Economics	273	418	490	402	562	586	769'	831'	809
DEP 04 Economics	336	488	590	511	737	781	968	979	946
Medicine	329	266	326	284	260	235	264	280	254
Dentistry	71	60	77	93	90	91	104	81	114
DEP 05 Medicine	400	326	403	377	350	326	368	361	368
Applied Cultural Studies	1	1	0	0	0	0	0	0	0
Communication Studies	159	89	89	104	137	112	220'	187'	166
Education	166	184	206	183	192	197	211	308	310
Political Sciences	233	115	135	168	172	158	197'	175'	183
Social Sciences	23	21	31	21	35	33	30	23	14
Sociology	55	42	27	38	41	57	58	47	38
DEP 06 Education and Social Studies	637	452	488	514	577	557	716	740	711
Psychology	73	89	91	105	79	113	73	186	177
Sport Studies	150	115	107	111	127	176	200	152	159
DEP 07 Psychology and Sport Studies	223	204	198	216	206	289	273	338	336
Archaeology	10	8	6	5	8	4	2	9	9
Byzantine Studies	0	0	0	0	0	1	0	0	0
History	196	106	108	111	127	164	226	205	205
Classical Philology	16	16	15	11	18	25	44	53	53
Art	10	13	14	14	11	2	4	2	2
Art History	48	22	20	26	16	17	40	35	35

Continued ›

Department/Course of study	Academic year								
	2003	2004	2005	2006	2007	2008	2009	2010	2011
Medieval Latin Philology	0	0	0	0	0	1	0	0	0
Music	45	38	39	57	40	30	25	37	36
Musicology	5	0	5	3	7	4	4	6	5
Philosophy	70	24	27	82	31	42	47	40	44
Textile Design	14	13	17	11	7	4	3	0	0
Prehistory and Early History	20	11	5	15	7	3	7	11	8
Ethnology	27	17	10	19	12	20	38	32	32
Folklore and European Ethnology	15	9	9	4	9	2	11	11	9
DEP 08 History and Philosophy	476	277	275	358	293	319	451	441	438
Egyptology/Coptology	6	4	3	4	1	4	7	3	0
General Linguistics	14	5	12	9	11	9	12	6	4
English Philology	93	70	57	86	117	156	255	269	209
Baltic Studies	1	1	1	0	0	1	1	1	0
German Philology/Old and New German Literature	327	230	250	281	343	619	923	737	560
Indo-Germanic Linguistics	0	0	1	1	2	1	3	1	1
Indian Studies	1	0	1	0	0	0	0	0	0
Arabic and Islamic Studies	1	0	2	2	2	5	8	10	23
Dutch Philology	18	38	30	23	27	37	33	56	50
Ancient Oriental Studies	2	0	2	2	0	2	2	6	4
Romance Language and Literature	71	60	65	40	39	73	151	173	162
Sinology	0	0	6	6	1	0	3	4	6
Scandinavian Studies	8	3	4	4	3	6	10	10	8
Slavonic Studies	15	10	7	10	11	5	1	0	6
DEP 09 Philologies	557	421	441	468	557	918	1,409	1,276	1,033
Computer Sciences	9	9	4	8	18	12	32	47	75
Mathematics	105	145	106	147	194	365	481	499	462
DEP 10 Mathematics and Computer Sciences	114	154	110	155	212	377	513	546	537
Geophysics	6	4	3	6	5	7	10	19	11
Physics	59	45	56	53	79	88	91	113	112
Technology	13	14	11	2	12	10	12	6	10
DEP 11 Physics	78	63	70	61	96	105	113	138	133

Continued >

Department/Course of study	Academic year								
	2003	2004	2005	2006	2007	2008	2009	2010	2011
Chemistry	65	53	87	77	89	138	138	196	206
Food Chemistry	31	24	19	23	28	15	25	57	66
Pharmacy	144	97	62	97	99	116	84	108	119
DEP 12 Chemistry and Pharmacy	240	174	168	197	216	269	247	361	391
DEP 13 Biology	137	143	157	270	317	283	289	277	284
Geography	142	133	130	110	162	184	262	227	254
Geology	10	14	13	17	10	1	0	0	0
Geoscience	.	6	11	8	23	36	31	55	59
Mineralogy	1	3	2	2	0	0	0	0	0
DEP 14 Geosciences	153	156	156	137	195	221	293	282	313
General Knowledge for Primary School (Focus: Social Sciences)	35	48	27	44	57	28	9	14	6
General Knowledge for Primary School (Focus: Natural Science)	3	5	32	64	65	17	4	6	7
General Knowledge for Primary School (general)	0	14	22	3	6	7	1	1	1
General Knowledge for Primary School	38	67	81	111	128	52	14	21	14
Religious Studies	.	.	.	1	0	1	10	4	11
WWU in total	4,194	3,692	3,818	4,148	4,780	5,163	6,655^r	6,426^r	6,233
Female graduates	2,367	2,029	2,148	2,474	2,891	3,164	3,944	3,850	3,662
Percentage (%)	56.4	55.0	56.3	59.6	60.5	61.3	59.3	59.9	58.8
Foreign graduates	131	143	157	161	190	169	208	181	255
Percentage (%)	3.1	3.9	4.1	3.9	4.0	3.3	3.1	2.8	4.1
WWU in total (excluding medicine)	3,794	3,366	3,415	3,771	4,430	4,837	6,287^r	6,065^r	5,865
Female graduates	2,169	1,873	1,924	2,260	2,696	2,970	3,734	3,636	3,446
Percentage (%)	57.2	55.6	56.3	59.9	60.9	61.4	59.4	60.0	58.8
Foreign graduates	113	113	124	132	167	145	183	161	223
Percentage (%)	3.0	3.4	3.6	3.5	3.8	3.0	2.9	2.7	3.8

- Course not offered
- r Internal correction (Department 5.3)

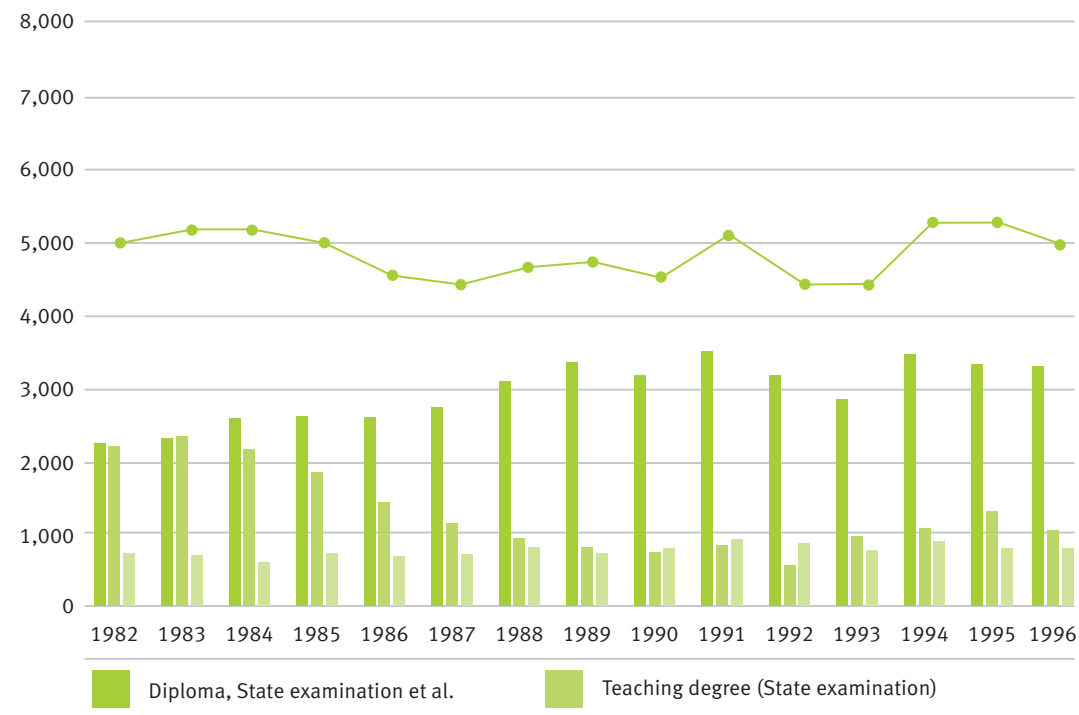
Source: Internal statistics of WWU based on official examination statistics by the IT.NRW

› Number of examinations passed by type of degree 1995–2011

Type of degree	Academic year						
	1995	1996	1997	1998	1999	2000	2001
Magister Artium (M.A.)	414	390	353	355	317 ^r	392 ^r	380 ^r
State examination	1,395	1,350	1,356	1,333	1,165	1,185	1,182
Diploma	1,315	1,374	1,444	1,271	1,109	1,091	1,064
Ecclesiastical degree	50	43	37	25	25	30	17
Licentiate	12	8	14	10	17	11	10
Doctoral degree	773	744	752	739	700	753	674
Teaching degree for elementary school (LA Primarstufe)	642	511	470	485	579	689	591
Teaching degree for secondary school (LA Sekundarstufe I)	170	177	132	157	173	187	210
Teaching degree for secondary school (LA Sekundarstufe II, II/I)	441	312	860	730	603	636	598
Bachelor (BA, BSc) (inclusive Bachelor course (major/minor))
Bachelor (BA-2 HF)
Bachelor (BA KJ (G), BA KJ (HRGe))
Master (MA, MSc)
Master of Further Education
Master of Education for teaching at primary school (MEd, G)
Master of Education for teaching at elementary schools, secondary modern schools, comprehensive schools (MEd, HRG)
Master of Education for teaching at grammar schools, comprehensive schools and vocational school
Certificate
Total	5,212	4,909	5,418	5,105	4,688	4,974	4,726

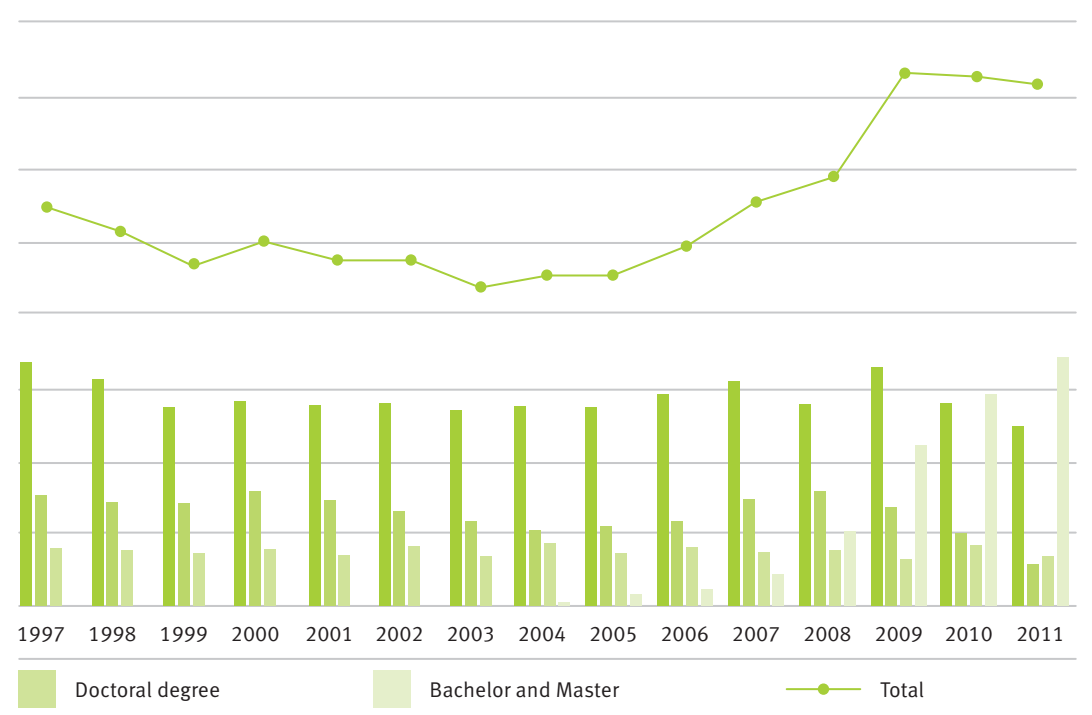
^r Internal correction (Department 5.3) • No possibility of studying for this particular type of degree at WWU

› Number of examinations passed by type of degree in the years 1982–2011



Type of degree	Academic year									
	2002	2003	2004	2005	2006	2007	2008	2009	2010	2011
Magister Artium (M.A.)	417	522 ^r	498	526	578	563	574	607	522	384
State examination	1,095	1,161	1,014	955	1,082	1,152	913	1,318	973	1,086
Diploma	1,148	863	1,098	1,095	1,110	1,234	1,156	1,200 ^r	1,164 ^r	985
Ecclesiastical degree	19	29	12	26	10	8	4	9	12	17
Licentiate	5	7	15	12	12	6	4	0	5	4
Doctoral degree	787	654	831	707	765	711	734 ^r	694 ^r	791	696
Teaching degree for elementary school (LA Primarstufe)	487	306	309	347	393	512	444	329	147	58
Teaching degree for secondary school (LA Sekundarstufe I)	205	178	152	190	213	277	303	252	136	80
Teaching degree for secondary school (LA Sekundarstufe II, II/I)	560	639	541	510	517	616	768	807	675	381
Bachelor (BA, BSc) (inclusive Bachelor course (major/minor))	.	2	11	118	157	331	413	690 ^r	1,140 ^r	1,270
Bachelor (BA-2 HF)	227	806	727	666
Bachelor (BA KJ (G), BA KJ (HRGe))	224	402	307	299
Master (MA, MSc)	.	2	37	28	66	81	128	128 ^r	150 ^r	354
Master of Further Education	105	206
Master of Education for teaching at primary school (MEd, G)	71	228	178
Master of Education for teaching at elementary schools, secondary modern schools, comprehensive schools (MEd, HRG)	19	109	99
Master of Education for teaching at grammar schools, comprehensive schools and vocational school	128	365
Certificate	.	.	5	12	10	4	5	17	3	7
Total	4,723	4,363	4,523	4,526	4,913	5,495	5,897	7,349	7,322	7,135

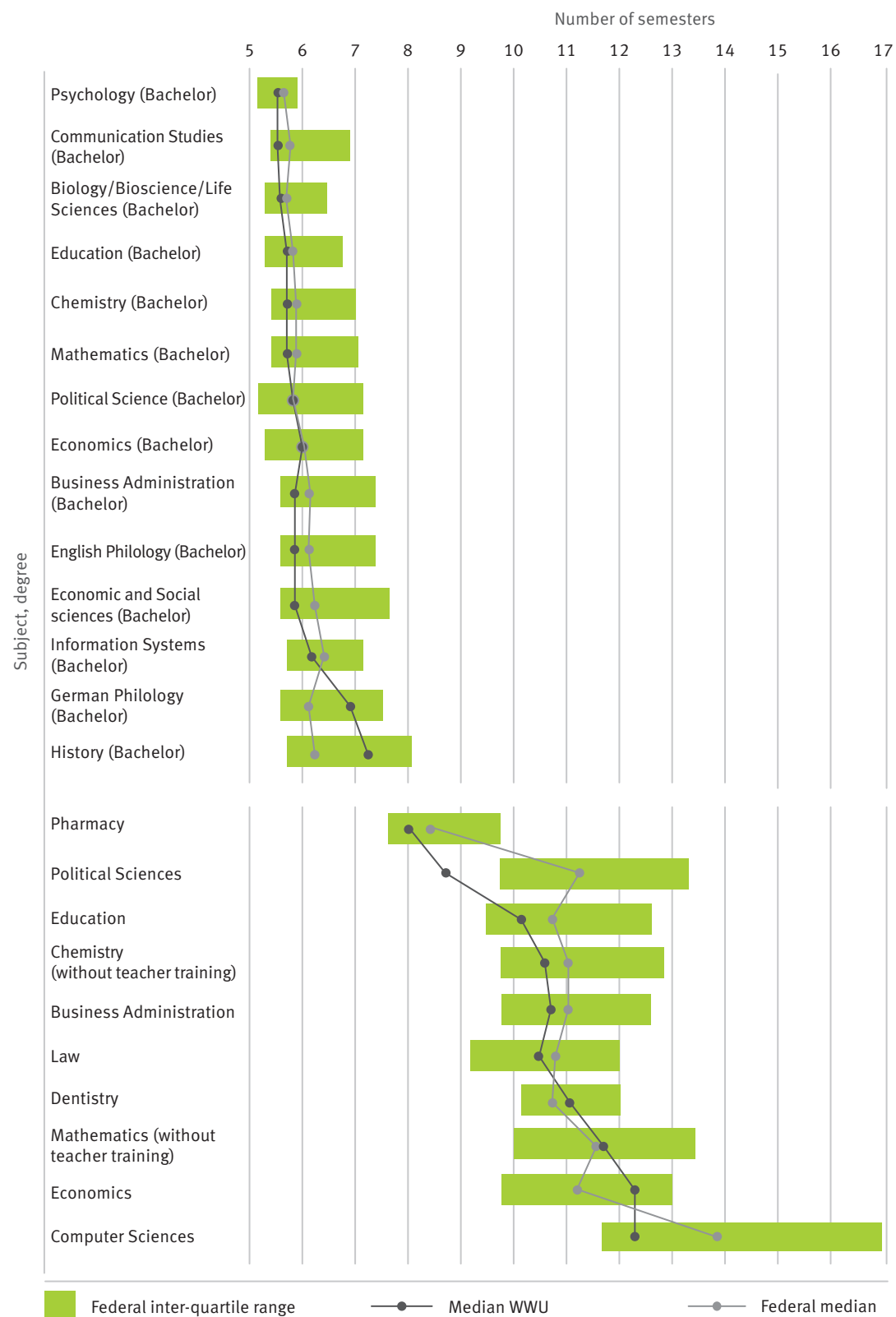
Source: Official examination statistics by the IT.NRW



Source: Official examination statistics by the IT.NRW

E. Duration of Study

› Average duration of study (median) in selected subjects* at WWU in the academic year 2011 in national comparison



Source: WWU's own calculations and chart, based on: German Federal Statistics Office, subject series 11 (Statistisches Bundesamt, Fachserie 11)

* The data of the German Federal Statistics Office only includes subjects with more than 900 graduates nationwide. Presented here are those subjects in which WWU is among the universities with the most graduates in the particular subject.

F. Academic Success

› Development of academic success by type of degree

Type of degree	Academic success	2000-02	2003-05	2006-08	2009-11
	Examinations passed	2000-02	2003-05	2006-08	2009-11
	First-year students	1997-99	2000-02	2003-05	2006-08
Bachelor (BSc, BA)	Academic success	.	27%	46%	59%
	Examinations passed (t)	.	34	437	2,712
	First-year students (t-3)	.	124	941	4,582
Bachelor 2-HF in total	Academic success	.	.	.	51%
	Examinations passed (t)	.	.	.	4,396
	First-year students (t-3)	.	.	.	8,605
Bachelor KJ in total	Academic success	.	.	.	68%
	Examinations passed (t)	.	.	.	2,015
	First-year students (t-3)	.	.	.	2,961

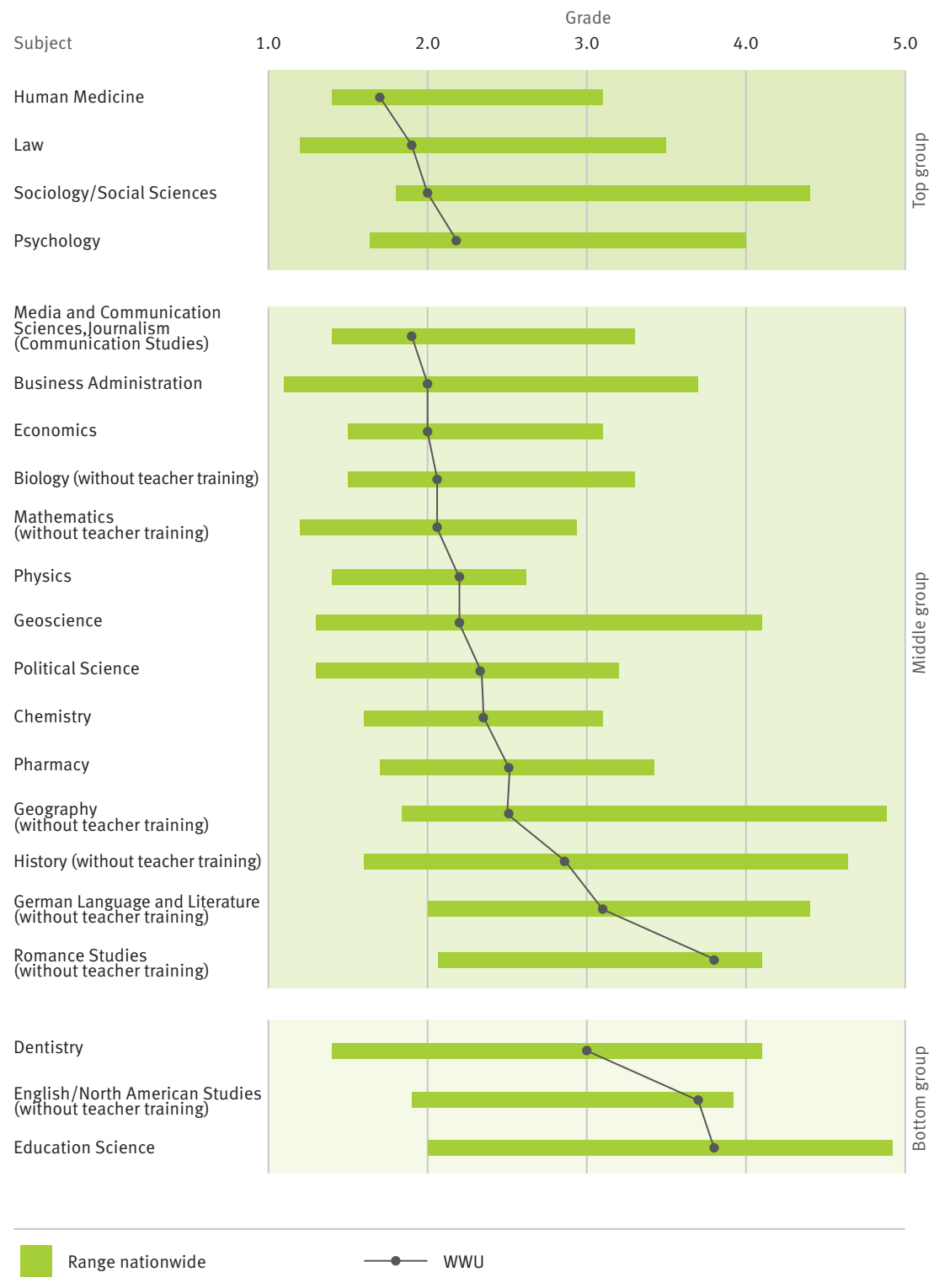
Type of degree	Academic success	2000-02	2003-05	2006-08	2009-11
	Examinations passed	2000-02	2003-05	2006-08	2009-11
	First-year students	1998-00	2001-03	2004-06	2007-09
Master (MSc, MA)	Academic success	.	44%	53%	48%
	Examinations passed (t)	.	11	79	519
	First-year students (t-2)	.	25	148	1,075
Master of Education (LA G)	Academic success	.	.	.	77%
	Examinations passed (t)	.	.	.	954
	First-year students (t-2)	.	.	.	1,239
Master of Education (LA HRG)	Academic success	.	.	.	69%
	Examinations passed (t)	.	.	.	453
	First-year students (t-2)	.	.	.	654

Type of degree	Academic success	2000-02	2003-05	2006-08	2009-11
	Examinations passed	2000-02	2003-05	2006-08	2009-11
	First-year students	1995-97	1998-00	2001-03	2004-06
State examination	Academic success	87%	85%	95%	113%
	Examinations passed (t)	2,254	2,001	2,094	2,280
	First-year students (t-5)	2,587	2,361	2,212	2,011
Diploma	Academic success	48%	38%	43%	57%
	Examinations passed (t)	3,299	3,052	3,471	3,335
	First-year students (t-5)	6,944	8,098	7,990	5,897
Magister Artium (M.A., major subject)	Academic success	28%	31%	34%	54%
	Examinations passed (t)	1,490	1,753	1,766	1,538
	First-year students (t-5)	5,290	5,656	5,178	2,857

Source: Internal WWU statistics based on official examination statistics and internal student statistics

G. CHE University Ranking 2010–2012

› Student rating of overall study situation at WWU



› Student assessment of selected aspects of studying and teaching at WWU

Subject	Year of ranking	Overall study situation ¹		Counselling ²		Courses offered ³		Study organisation ⁴	
		Grade	League group	Grade	League group	Grade	League group	Grade	League group
Medicine	2012	1.7	A	2.4	A	2.7	A	2.1	A
Law	2011	1.9	A	2.9	C	2.5	B	2.3	B
Sociology/Social Sciences	2011	2.1	A	-	-	-	-	2.7	B
Psychology	2010	2.2	A	2.3	B	2.9	B	2.0	A
Media- and Communication Sciences, Journalism (Communication Studies)	2011	1.9	B	2.1	B	2.4	B	2.1	A
Business Administration	2011	2.0	B	2.4	B	2.5	B	2.3	B
Economics	2011	2.0	B	-	-	2.4	B	-	-
Biology (without teacher training)	2012	2.1	B	2.4	B	2.7	B	2.5	A
Mathematics (without teacher training)	2012	2.1	B	2.0	B	2.5	B	2.5	B
Physics	2012	2.2	B	2.2	B	2.7	B	2.6	B
Geoscience	2012	2.2	B	1.7	A	-	-	2.6	B
Political Science	2011	2.3	B	2.5	B	2.4	A	2.5	B
Chemistry	2012	2.3	B	2.4	B	2.7	B	2.8	B
Pharmacy	2012	2.5	B	2.5	B	3.3	C	2.7	B
Geography (without teacher training)	2012	2.5	B	2.2	B	2.8	B	2.9	B
History (without teacher training)	2010	2.8	B	2.7	C	3.2	C	3.4	C
German Language and Literature (without teacher training)	2010	3.1	B	2.8	C	3.6	C	3.4	C
Romance Languages and Literature (without teacher training)	2010	3.8	B	3.0	C	3.6	B	3.5	B
Dentistry	2012	3.0	C	3.2	C	3.6	C	3.0	B
English/North American Studies (without teacher training)	2010	3.7	C	3.1	C	3.4	C	3.4	B
Education Science	2010	3.8	C	2.6	B	3.4	B	3.6	C

- A Top group
 - B Middle group
 - C Bottom group
- Positive change in comparison with the last ranking (three years earlier)
 - Negative change in comparison with the last ranking (three years earlier)

¹ Individual Question
² Index made up of several individual assessments (e.g. lecturers' accessibility, teachers' consulting hours, support and advice given by teachers, discussion of homework and term papers); assessments made on a scale of 1 (very good) to 6 (very bad).
³ Index made up of several individual assessments (e.g. breadth of content, international orientation and interdisciplinary aspects of teaching); assessments made on a scale of 1 (very good) to 6 (very bad).
⁴ Index made up of several individual assessments (e.g. completeness of courses offered with respect to study regulations, opportunities for access to compulsory teaching and harmonization of courses offered with examination regulations); assessments made on a scale of 1 (very good) to 6 (very bad).



› Budget of WWU (excluding medicine) in the years 2006–2011

Expenditure (in € m)	2006	2007	2008	2009	2010 ³	2011 ⁴
Staff expenditure (without third-party funds and special funds)	147.7	146.6	144.0	149.8	156.0	159.6
Expenditure on equipment ¹ (without third-party funds and special funds)	27.9	46.0	53.8	52.6	49.2	53.6
Capital expenditure (without third-party funds and special funds)	3.2	10.0	7.2	6.9	17.6	3.3
Rents and leases	41.9	42.0	44.1	45.1	46.4	47.2
Third-party funds	43.8	47.4	52.9	71.9	78.9	80.2
Special funds ²	11.9	13.9	12.1	19.4	23.3	25.7
Tuition fees		3.6	13.3	15.8	18.0	15.6
Total	276.4	309.5	327.4	361.5	389.4	385.2

Source: Dept. 5

- 1 Since 2007 gross posting for energy revenues and expenditure
 2 NRW State funding (from 2006 "Zuwendungsmittel" incl. study account funding)
 3 updated figures
 4 final result

› Key data on current basic funding at selected universities (excluding medicine) compared to the rest of the country ("German U15")

University	Current basic funding (in € 1,000)								
	2010			2008			2006		
	per student	per academic staff	per professor	per student	per academic staff	per professor	per student	per academic staff	per professor
U Bonn	11.16	179.31	712.57	13.36	224.20	860.36	8.63	167.67	648.61
U Göttingen	8.48	152.40	507.24	7.81	152.54	481.57	8.58	166.81	528.31
U Freiburg i.Br.	8.07	123.78	518.98	7.67	109.95	498.01	7.65	121.55	513.11
U Tübingen	7.46	133.32	466.91	6.82	119.27	441.66	7.05	131.63	492.82
FU Berlin	7.11	146.26	525.94	6.84	135.85	498.36	6.99	132.93	558.57
U Munich	6.78	117.98	527.28	6.41	114.91	471.39	6.13	129.92	465.98
U Hamburg	6.76	132.07	436.83	6.44	127.31	400.10	6.66	143.91	437.09
U Frankfurt a.M.	6.74	156.75	566.88	7.72	167.23	568.66	6.19	134.52	458.98
U Leipzig	6.67	132.75	476.25	6.14	124.23	439.23	6.20	126.00	473.49
U Heidelberg	6.55	111.94	529.82	6.00	95.79	463.75	6.55	98.45	551.56
U Münster	6.55	124.35	556.99	6.12	125.01	535.48	5.82	101.60	570.51
U Mainz	6.40	137.42	526.97	5.48	127.37	484.55	5.41	141.33	568.24
U Cologne	6.30	162.40	596.66	4.42	125.29	429.87	4.57	151.32	500.60
U Würzburg	5.62	93.02	437.05	5.64	96.76	436.91	5.81	117.36	454.44
HU Berlin	3.56	79.92	253.31	3.36	69.03	226.63	4.18	92.05	316.16
German U15 in total	6.83	132.69	509.18	6.54	128.20	481.18	6.27	129.37	498.18
Universities in total	7.06	129.43	527.66	6.88	127.82	490.77	7.04	130.61	509.75

Source: German Federal Statistics Office, subject series 11 (Statistisches Bundesamt, Fachserie 11)

* The current basic funding for teaching and research is a part of the university's expenditure which the university funding body provides, out of its own resources, for universities' current purposes.

› WWU's cost structure in the financial year 2011 (excluding medicine)

Cost type	Federal budgeting	Third-party funding	Total costs	Percentage of NRW state budgeting	Percentage of third-party funding
	in €	in €	in €		
Costs for civil servants	60,408,115	1,307,302	61,715,417		
Costs for other employees	112,234,370	41,968,153	154,202,523		
Costs for apprentices/interns	1,658,054	0	1,658,054		
Costs for (student) assistants	9,855,512	4,687,362	14,542,875		
Other personnel costs	6,853,149	295,836	7,148,985		
Personnel costs in total	191,009,200	48,258,654	239,267,854	59.5%	72.0%
Costs for energy and materials supplies	15,622,703	69,584	15,692,287		
Costs for contract cleaners	3,668,203	10,405	3,678,608		
Other running costs	9,771,657	63,343	9,835,000		
Running costs in total	29,062,563	143,332	29,205,895	9.1%	0.2%
Material costs	7,077,159	3,322,465	10,399,624		
Communication costs	1,389,989	26,797	1,416,786		
Costs for literature supply	5,507,487	675,001	6,182,488		
Rent for equipment	337,906	77,282	415,188		
Other running material costs	23,437,129	11,476,855	34,913,984		
Running material costs in total	37,749,670	15,578,399	53,328,070	11.8%	23.2%
Leasing costs to the NRW Department of Buildings and Real Estate Services (BLB)	45,723,390	0	45,723,390		
Leasing costs to others	2,136,797	94,325	2,231,122		
Leasing costs in total	47,860,187	94,325	47,954,512	14.9%	0.1%
Calculatory depreciation	15,134,429	2,937,654	18,072,083	4.7%	4.4%
Costs in total	320,816,049	67,012,364	387,828,413	100.0%	100.0%

Source: Cost and performance accounting

› Performance-oriented budgeting for the financial year 2013 (excluding

Higher Education Institution	Planned target (after adjustments)		Performance Budget ¹ in € 1,000	Parameters for formula-based allocation ²	
	in € 1,000	%		Graduates ³ in %	Gender equality in %
TH Aachen	249,467	13.27	57,377	8.44	4.71
U Münster	198,890	10.58	45,745	14.81	7.60
U Bochum	199,453	10.61	45,874	9.47	7.68
U Cologne	195,971	10.43	45,073	11.76	8.89
U Bonn	196,086	10.43	45,100	8.77	4.31
U Duisburg-Essen	171,251	9.11	39,388	8.65	7.45
U Dortmund	136,458	7.26	31,385	7.30	7.18
U Bielefeld	123,474	6.57	28,399	6.92	8.46
U Paderborn	82,202	4.37	18,907	4.71	10.08
U Siegen	76,045	4.05	17,490	4.76	8.05
U Düsseldorf	92,470	4.92	21,268	4.76	6.64
U Wuppertal	78,936	4.20	18,155	4.26	8.46
FeU Hagen	52,640	2.80	12,107	3.61	7.75
DSH Cologne	25,911	1.38	5,960	1.79	2.73
Total	1,879,255	100.00	432,229	100.00	100.00

- 1 Performance Budget = 23% of the adjusted target for the budget year
- 2 Parameters are weighted as follows: graduates (50%), gender equality (10%) and third-party funding (40%).
- 3 Graduates are weighted by type of degree (Bachelor and diploma: 1; Master: 0.5) and duration of study (within the regular duration of study: 2, otherwise: 1). Exception for the FeU Hagen: graduates in part-time studies are given the factor 1.33 within the regular duration of study.

medicine) – parameters and results

Parameters for formula-based allocation ²	Result of all parameters in € 1,000	Result before adjustment		Result after adjustment ⁴	
		Third party-funding in %	in € 1,000	%	in € 1,000
28.16	68,960	11,582	4.64	4,246	1.70
10.17	52,872	7,128	3.58	2,613	1.31
9.76	40,651	-5,224	-2.62	-1,995	-1.00
6.28	40,114	-4,959	-2.53	-1,960	-1.00
10.56	39,065	-6,035	-3.08	-1,961	-1.00
7.05	34,110	-5,277	-3.08	-1,713	-1.00
7.41	31,690	304	0.22	112	0.08
5.96	28,907	508	0.41	186	0.15
4.49	22,288	3,381	4.11	1,239	1.51
2.52	18,137	647	0.85	237	0.31
2.88	18,129	-3,139	-3.40	-925	-1.00
2.57	17,306	-849	-1.08	-789	-1.00
1.05	12,965	857	1.63	314	0.60
1.15	7,036	1,076	4.15	395	1.52
100.00	432,229	0		0	

- 4 The maximum loss from formula-based allocation is limited to 1.0 % of the adjusted target of each financial year. There is no blanket limitation on profits, which are subject to linear adjustment according to the amount of funds available.

› Performance-oriented budgeting of the Faculty of Medicine for the

University	Budget appropriation 2012		Payment into formula-based allocation ¹	State Gender Equality Act (LGG) ²
	in € 1,000	%	in € 1,000	
U Münster	118,461	17.77	23,692	20.56
U Cologne	111,360	16.70	22,272	17.76
U Bonn	95,101	14.26	19,020	13.21
U Düsseldorf	118,412	17.76	23,682	17.15
TH Aachen	99,484	14.92	19,897	18.22
U Duisburg-Essen	87,298	13.09	17,460	9.99
U Bochum	36,665	5.50	7,333	3.11
Total	666,780	100.00	133,356	100.00

- 1 Corresponds to 20% of relevant budget appropriation for 2012.
- 2 LGG basis = Mean value of registered percentage of posts occupied by female academics in 2008–2010; professorships with female incumbents weighted with factor 5.0.
- 3 Parameters are weighted as follows: research input: 30%; research output: 45%; teaching: 25%.
- 4 Third-party funding basis = registered expenditure in 2008–2010, funding weighted by source (DFG: factor 5; appraised funds: factor 3; non-appraised funds: factor 1), weighting for the latest three-year period: 3:2:1.

› Tutorial staff by department* (excluding medicine) and source of funding

Department	Professors**	Academic staff
		regular budget
DEP 01 Protestant Theology	11.0	16.3
DEP 02 Roman Catholic Theology	20.9	22.8
DEP 03 Law	34.5	35.5
DEP 04 Economics	40.3	117.8
DEP 06 Education and Social Studies	38.8	41.1
DEP 07 Psychology and Sport Studies	21.0	56.0
DEP 08 History and Philosophy	57.7	51.6
DEP 09 Philologies	45.0	70.6
DEP 10 Mathematics and Computer Sciences	41.0	50.3
DEP 11 Physics	26.3	72.2
DEP 12 Chemistry and Pharmacy	39.0	118.8
DEP 13 Biology	28.0	56.1
DEP 14 Geosciences	28.0	40.0
DEP 15 Music Department	14.0	2.5
Total	445.3	751.4

- * Without medical faculty, centres and central academic institutions
- ** incl. acting professorships and junior professorships

financial year 2012 – parameters and results

Parameters for formula-based allocation ³			Payback according to formula-based allocation		Profit / Loss (compared to in-payment)
Research input (third-party funding) ⁴	Research output (PL) ⁵	Teaching ⁶	in € 1,000	%	in € 1,000
19.21	18.22	18.00	24,762	18.57	1,070
18.85	16.64	16.78	23,147	17.36	875
17.24	16.97	14.23	21,613	16.21	2,593
13.24	13.34	17.96	19,472	14.60	-4,210
15.05	12.19	15.00	18,635	13.97	-1,262
10.87	13.58	12.29	16,430	12.32	-1,030
5.54	9.07	5.73	9,298	6.97	1,965
100.00	100.00	100.00	133,356	100.00	0

- 5 SUM(p)CS = accumulated Journal Citation Score specific to type of publication (citations in period under observation/publications in period under observation, distinguished by type of publication)
- 6 Teaching basis = IMPP results (examination results) for 2008–2010 and funding for projects to improve the quality of teaching

in 2012 – full-time employee equivalents (data as at 2012-12-31)

Academic staff	Further staff		Total staff
	third-party funds and special funds	regular budget	
13.7	11.3	0.0	52.2
19.3	20.7	1.0	84.6
46.1	34.8	3.3	154.2
89.0	36.9	1.9	285.9
72.7	24.6	3.7	180.8
38.6	38.9	1.8	156.3
32.9	35.9	2.0	180.2
46.8	33.5	2.2	198.1
72.7	16.5	1.0	181.5
82.9	97.5	3.2	282.0
186.4	159.9	12.1	516.2
82.9	98.0	9.7	274.7
58.7	47.4	2.8	176.9
1.0	7.0	0.0	24.5
843.7	663.5	44.6	2,748.4

Source: Cost and performance accounting

› WWU Münster in the 2011 CEWS higher education ranking, based on gender equality

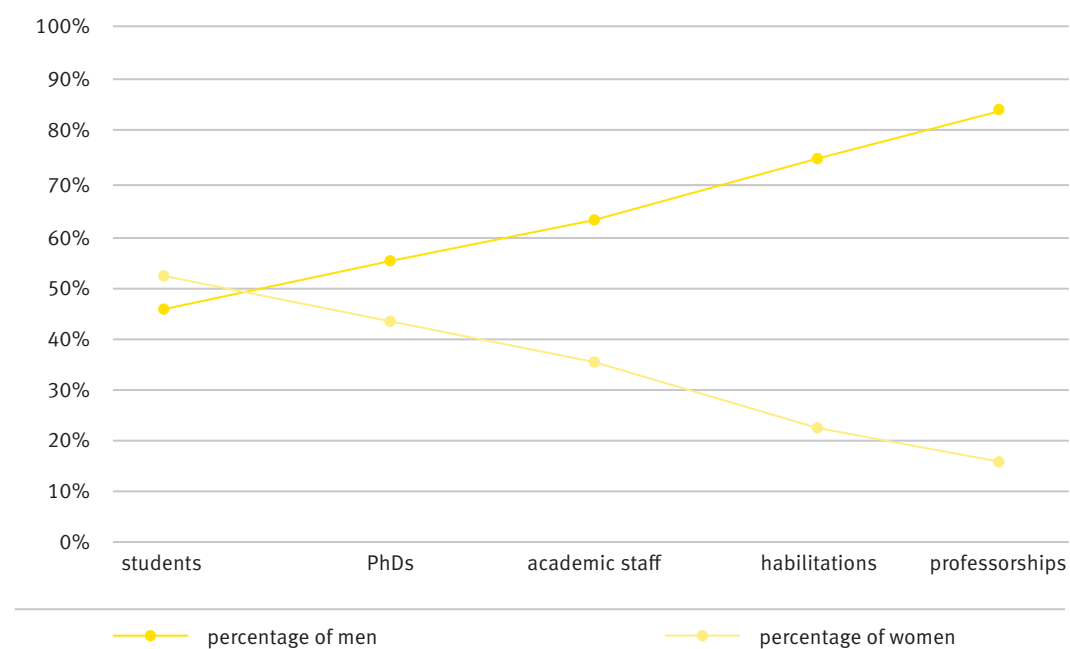
Indicator	Rank	Women in %		Indicators (relative)	
		WWU	Range of all universities examined	percentage of women in relation to the proportion of female students	Range of all universities examined
Students	leading group	53.1	15.0 – 70.0 ¹	2	2
PhDs	middle group	43.7	11.3 – 100.0	0.822	0.409 – 1.429
Academic staff	middle group	37.3	0.0 – 63.3	0.702	0.000 – 1.925
Habilitations	middle group	23.9	0.0 – 75.0	0.450	0.000 – 1.212
Professorships	middle group	17.2	0.0 – 44.2	0.325	0.000 – 0.932

Indicator	Rank	WWU			Range of all universities examined
		Women in % (2004)	Women in % (2009)	increase in %-Points	
Increase in proportion of women among academic staff from 2004 to 2009	leading group	31.1	37.3	+6.1	-9.1 – +23.1
Increase in proportion of women holding professorships from 2004 to 2009	middle group	13.2	17.2	+4.1	-11.1 – +18.5

- 1 Flat-rate values were set for cases below 15% or above 70%
- 2 The indicator measures the equal distribution of male and female students by subject groups, proportional to the German average. WWU Münster attains a score of 1.008 in a range from 0.742 to 1.340.

Source: CEWS/CEWS (www.gesis.or Source: WWU graphic based on gender equality ranking in higher education 2011 g/cews/fileadmin/cews/www/download/cews-publik16.pdf)

› Diagram showing the 'leaky pipeline' relating to percentages of women and men in their academic careers at WWU Münster



Source: WWU graphic based on gender equality ranking in higher education 2011 by CEWS

› Number of female professors in comparison with all universities in NRW (excluding medicine) – parameter gender equality in the performance-based budgeting for the financial year 2013

Higher Education Institution	Junior professorships		Professorships ¹		Juniorprofessorships and Professorships		Women in %	
	2011 in total	female	2011 in total	female	2011 in total	female	HEI	NRW in total
U Paderborn	12	3	196	56	208	59	28.37	10.08
U Cologne	27	9	413	101	440	110	25.00	8.89
U Wuppertal	18	5	234	55	252	60	23.81	8.46
U Bielefeld	19	8	250	56	269	64	23.79	8.46
U Siegen	10	2	246	56	256	58	22.66	8.05
FeU Hagen	0	0	78	17	78	17	21.79	7.75
U Bochum	49	20	363	69	412	89	21.60	7.68
U Münster	32	11	389	79	421	90	21.38	7.60
U Duisburg-Essen	13	6	359	72	372	78	20.97	7.45
U Dortmund	15	3	272	55	287	58	20.21	7.18
U Düsseldorf	6	1	176	33	182	34	18.68	6.64
TH Aachen	32	12	330	36	362	48	13.26	4.71
U Bonn	16	3	388	46	404	49	12.13	4.31
DSH Cologne	1	0	25	2	26	2	7.69	2.73
Total	250	83	3,719	733	3,969	816	20.56	100.00

1 Professorships = full-time university professorships and professors at research universities

Source: MWF NRW – Department 111

› Number of female academic staff in qualification positions in 2012 by department (excluding medicine)

Department	Number		Women in %
	Total	female	
DEP 01 Protestant Theology	26	8	30.77
DEP 02 Roman Catholic Theology	56	31	55.36
DEP 03 Law	133	57	42.86
DEP 04 Economics	260	64	24.62
DEP 06 Education and Social Studies	145	78	53.79
DEP 07 Psychology and Sport Studies	108	62	57.41
DEP 08 History and Philosophy	95	37	38.95
DEP 09 Philologies	122	76	62.30
DEP 10 Mathematics and Computer Sciences	140	22	15.71
DEP 11 Physics	206	40	19.42
DEP 12 Chemistry and Pharmacy	418	156	37.32
DEP 13 Biology	185	96	51.89
DEP 14 Geosciences	112	43	38.39
DEP 15 Music Department	2	2	100.00
Departments in total	2,008	772	38.45
Other central institutions	165	78	47.27
WWU in total	2,173	850	39.12

* Academic staff on temporary posts in the salary grades: A13H, A14, A15, C01, E12, E13, E13U, E14, E15, E15U

Source: Gender equality office (data as at 2012-12-31)

› Appointment procedures completed in 2012

Department	Appointments to WWU				
	Total number of appointments	of which			Female
		Type of professorship			
		W3	W2	W1	
DEP 01 Protestant Theology	1	1	0	0	0
DEP 02 Roman Catholic Theology	2	1	1	0	0
DEP 03 Law	6	5	0	1	3
DEP 04 Economics	4	2	0	2	1
DEP 05 Medicine	8	8	0	0	2
DEP 06 Education and Social Studies	5	1	3	1	1
DEP 07 Psychology and Sport Studies	5	1	4	0	1
DEP 08 History and Philosophy	7	1	5	1	2
DEP 09 Philologies	1	1	0	0	1
DEP 10 Mathematics and Computer Sciences	5	3	0	2	1
DEP 11 Physics	4	3	0	1	1
DEP 12 Chemistry and Pharmacy	4	2	2	0	2
DEP 13 Biology	1	0	1	0	0
DEP 14 Geosciences	0	0	0	0	0
DEP 15 Music Department	1	0	1	0	1
Not assigned to a department	0	0	0	0	0
WWU in total	54	29	17	8	
Female	16	7	4	5	

Appointments to WWU		Negotiations with WWU professors on their remaining in office					
of which		Total number of procedures	of which				Female
Foreign nationality	Appointed from abroad		Outcome: staying at WWU	Outcome: leaving for another university	Type of professorship		
					W3	W2	
0	0	1	0	1	1	0	0
0	0	0	0	0	0	0	0
0	1	1	1	0	1	0	0
1	2	4	4	0	3	1	1
0	1	3	2	1	2	1	0
0	0	3	2	1	1	2	2
0	1	2	2	0	0	2	2
0	1	1	1	0	1	0	1
0	0	2	2	0	1	1	1
1	1	2	2	0	2	0	0
1	0	0	0	0	0	0	0
1	1	1	1	0	0	1	1
0	0	1	1	0	0	1	0
0	0	0	0	0	0	0	0
0	0	0	0	0	0	0	0
0	0	0	0	0	0	0	0
4	8	21	18	3	12	9	
2	3	8	7	1	3	5	

Source: Dept. 3

› Number of scheduled retirements of professors in 2012 to 2025,

Department	2012	2013	2014	2015	2016
DEP 01 Protestant Theology	1	1	-	1	-
DEP 02 Roman Catholic Theology	-	1	-	-	-
DEP 03 Law	1	2	1	3	1
DEP 04 Economics	-	5	-	-	-
DEP 05 Medicine	2	8	3	7	5
DEP 06 Education and Social Studies	2	-	-	-	2
DEP 07 Psychology and Sport Studies	2	-	1	1	1
DEP 08 History and Philosophy	-	1	1	4	1
DEP 09 Philologies	1*	-	1	4	2
DEP 10 Mathematics and Computer Sciences	1	1	1	-	1
DEP 11 Physics	2	1	-	2	2
DEP 12 Chemistry and Pharmacy	1	3	1	4***	-
DEP 13 Biology	-	1	-	2	1
DEP 14 Geosciences	-	-	2	1	-
DEP 15 Music Department	-	-	-	-	-
WWU in total	13	24	11	29	16

* incl. one professorship in the language centre

** incl. one professorship in the Center for Netherlands Studies

*** incl. one professorship set up in collaboration with Jülich Research Centre

by department

2017	2018	2019	2020	2021	2022	2023	2024	2025	Total
-	-	2	-	1	2	1	1	-	10
-	1	2	2	1	-	1	1	2	11
1	2	1	1	-	2	-	-	-	15
1	-	1	-	1	1	4	3	2	18
3	4	1	5	2	5	-	2	6	53
-	2	-	1	4	2	1	1	3	18
-	-	-	1	-	1	-	2	-	9
2	2	2	4	2	1	1	6	2	29
2	2	1	1	1**	1	2	2	2	22
-	1	-	3	2	1	2	-	1	14
1	1	-	1	1	1	1	2	3	18
-	3	1	1	1	-	1	-	2	18
1	1	3	-	-	1	-	-	2	12
-	-	1	-	2	2	-	4	1	13
-	-	1	-	1	-	-	-	1	3
11	19	16	20	19	20	14	24	27	263

Source: Dept. 3



Buildings

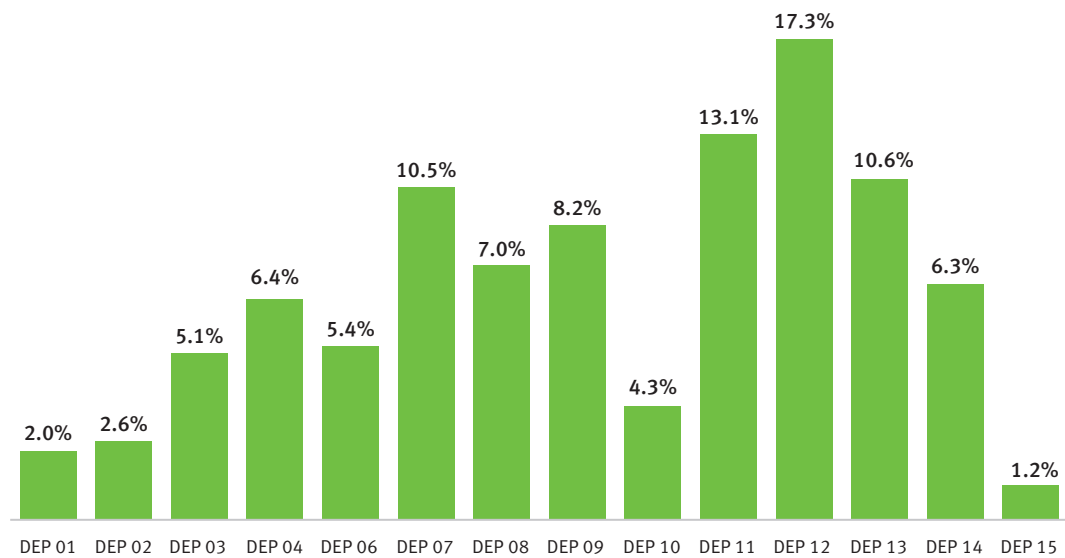
› Main useable areas by department* (excluding medicine) in 2008–2012 in m²

Department	2008	2009	2010	2011	2012
DEP 01 Protestant Theology	4,096	3,968	3,995	3,995	3,714
DEP 02 Roman Catholic Theology	4,800	4,800	4,753	4,753	4,719
DEP 03 Law	9,049	9,049	9,181	9,181	9,360
DEP 04 Economics	12,394	12,539	12,248	12,163	11,586
DEP 06 Education and Social Studies	8,288	8,605	9,001	9,106	9,922
DEP 07 Psychology and Sport Studies**	20,173	19,790	18,904	19,192	19,067
DEP 08 History and Philosophy	13,031	11,593	11,904	11,904	12,789
DEP 09 Philologies	17,926	16,018	16,502	16,066	15,004
DEP 10 Mathematics and Computer Sciences	6,124	7,282	7,742	7,742	7,907
DEP 11 Physics	22,113	22,113	22,036	22,171	23,926
DEP 12 Chemistry and Pharmacy	28,990	28,931	31,410	31,199	31,478
DEP 13 Biology	20,152	19,269	19,014	19,044	19,247
DEP 14 Geosciences	12,595	12,126	11,189	11,171	11,432
DEP 15 Music Department	2,133	2,133	2,133	2,133	2,133
WWU in total	181,864	178,216	180,017	179,825	182,285

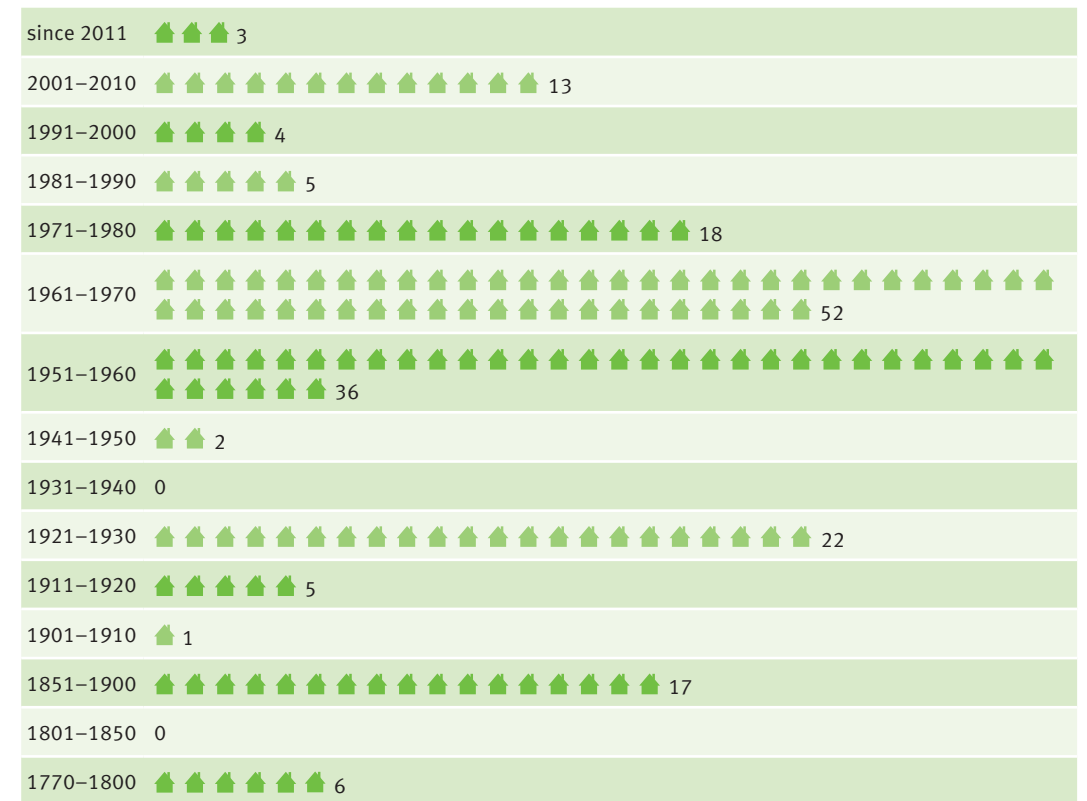
Source: Cost and performance accounting, Dept. 4

* Without centres and central academic institutions
 ** Incl. sports facilities

› Share of main useable area by department at WWU in 2012



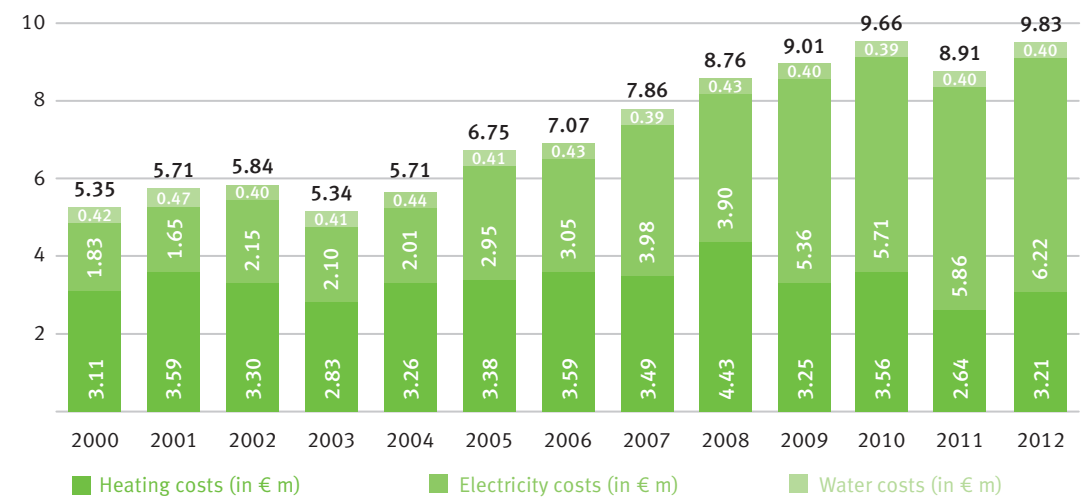
› Building stock* of WWU (excluding medicine) by year of construction



Source: Dept. 4

* excluding rents

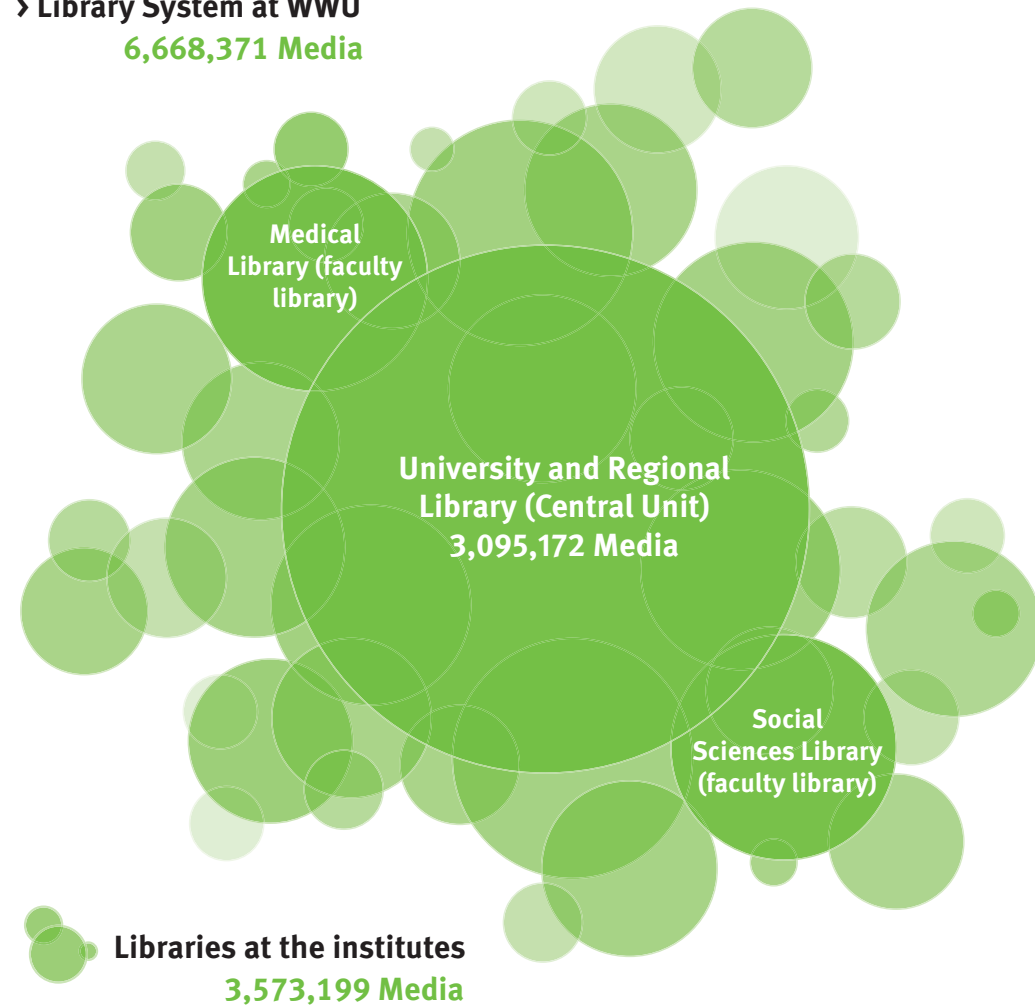
› Development of energy costs at WWU (excluding medicine) in the years from 2000–2012 (in € m)



Source: Dept. 4

University and Regional Library (ULB)

› Library System at WWU
6,668,371 Media



Number of libraries at the institutes	127
Libraries with stocks of more than 100,000 units	9
Libraries with stocks from 50,001 to 100,000 units	13
Libraries with stocks from 10,001 to 50,000 units	55
Libraries with stocks of fewer than 10,000 units	50

Source: ULB as at 2012-12-31

Learning and Working in the ULB

› Workspace

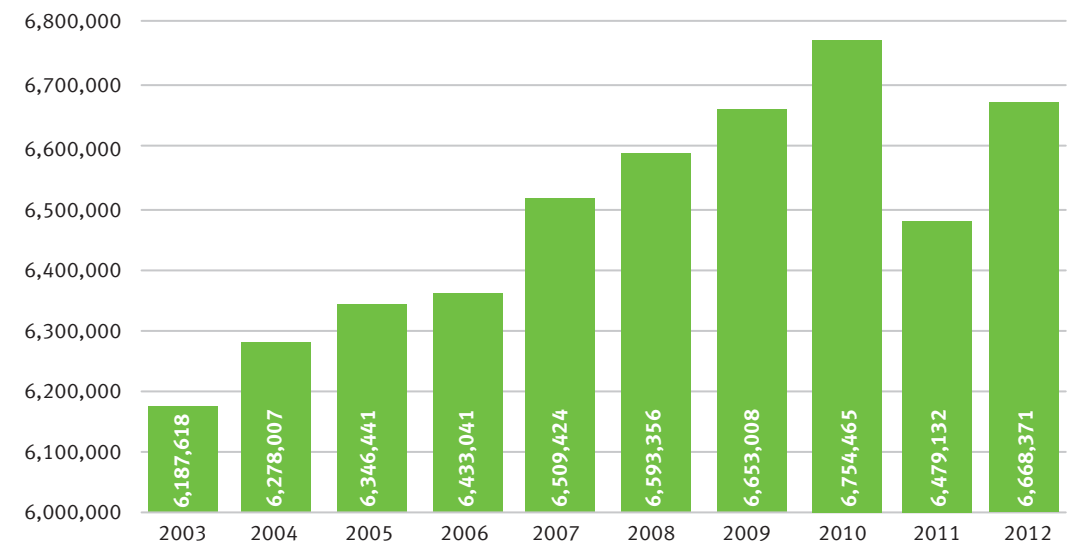
1,636

supply at ULB

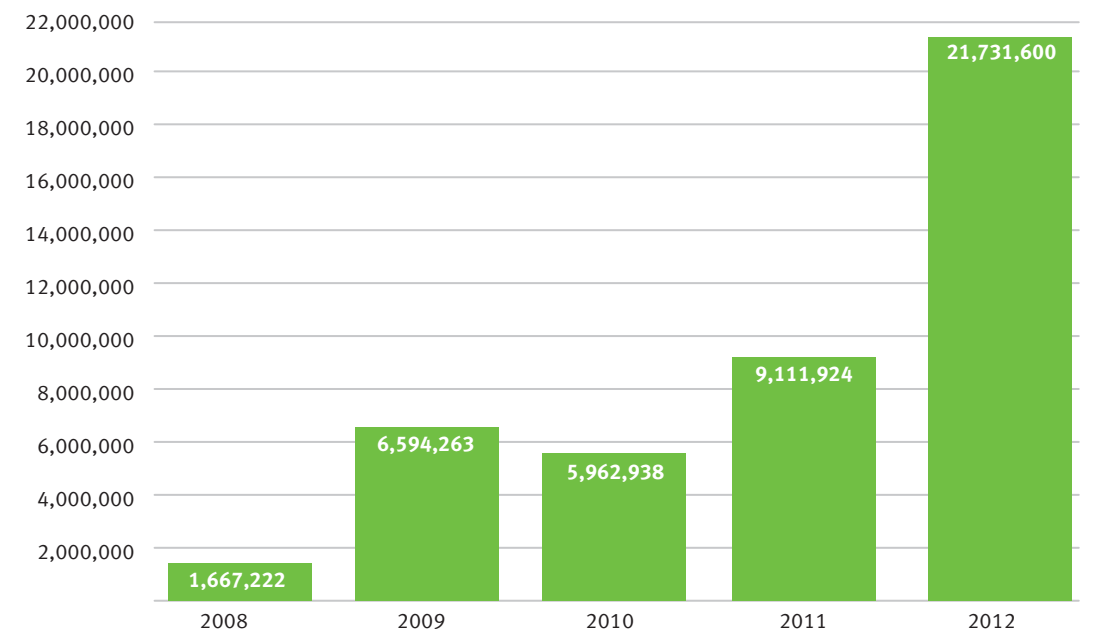
3,652

supply at libraries at the institutes

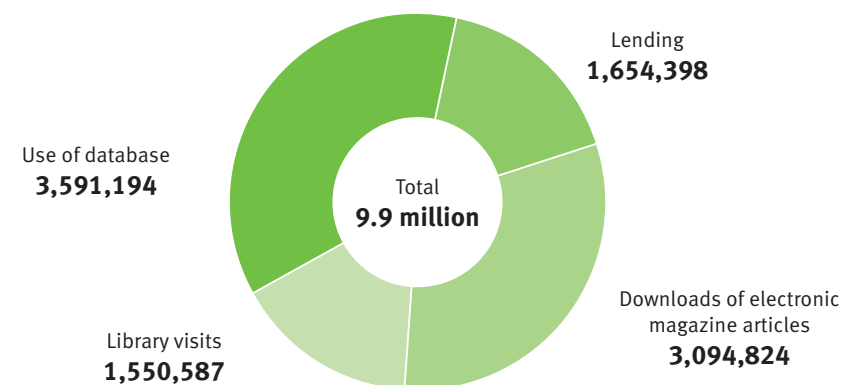
› Development of total media stocks 2003–2012



› Use of ULB catalogue 2008–2012



› Use of ULB stocks in 2012



Data Processing Center

Structural Data of the Data Processing Center (ZIV) in 2012

As at 2012-12-31 (change over previous year in percent)

› Communication network

62,247

Net supplies (WWU: 36,681; UKM: 24,004; Academy of Fine Arts Münster: 335; others: 1,002) **+14.1%**

~ 7,700

New connections per year **+67.5%**

~289 km

Fibreglass wiring **+6.6%**

1,489

WLAN access points **+10.3%**

21,048

analogue/digital telephones **+4.8%**

4,983

Incidents solved in the data network (NOC) per year **-13.3%**

35,264

Registered end systems **+1.6%**

331

Buildings developed **+2.5%**

1,693 TB

Data transfer to the internet via DFN per year **-2.4%**

1,957

TC/AVM orders per year **+3.7%**

1,118,100

External connections in total per month **+12.1%**

480

Security-relevant incidents (CERT) per year **+6.7%**

› Central systems

68,804

Active user names/identifications **+11.1%**

~11 GB

Daily mail data volume (on weekdays) **+18.2%**

120

Physical server systems operated **+0%**

1,077 TB

Data volume TSM backup **+47.5%**

85.2%

Utilization HPC system PALMA (290 compute nodes with 3,528 cores) **+19.7%**

› Applications / Tasks and Service

243,773

Number of print jobs (with ca. 3m pages per year) **-30.4%**

3,370

participants in software training per year **-4.2%**

~1.2 m

E-mails per day **-50.0%**

90%

Rate of blocked spammails **-6.2%**

380

Virtual server systems operated **+8.6%**

2,749

Data volume (GB) of the central web presentation of the WWU **+16.7%**

~6,500

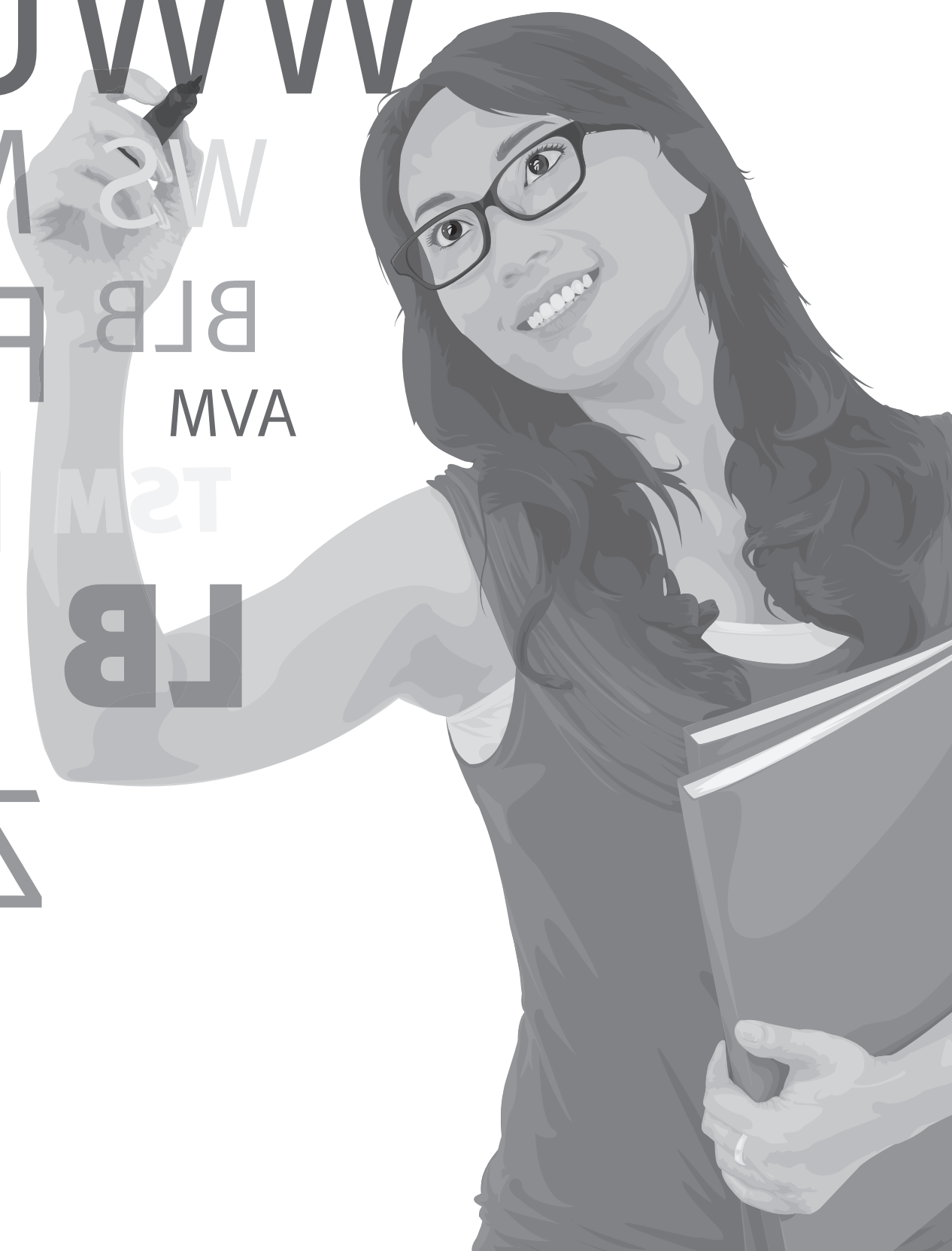
ZIVline advice (hotline) per year **+0%**

281

Number of software courses offered per year **-0.4%**

Further data and updated figures available at http://www.uni-muenster.de/ZIV/en/Fakten/Zahlen_Fakten.html

DD ZIV BMBF W W W U
 HRGe CERT M S C W S
 NRW W I E B U B L B
 U L B F O R C W T S A V M
 M I W F T B N O C . L . W . T S M
 L A D F G B S C
 I T . N R W B A M . A . M L B
 S P P B M U N C Z V S
 G e s



Glossary

› List of Abbreviations

AvH	Alexander von Humboldt	EXC	Cluster of Excellence	MEd, BK/		ZB	Branch library
AVM	Audiovisual media	FeU	Distance Learning University	BAB/BB	Master of Education for teaching at vocational school (professional education)	ZIV	Data processing service centre
BA	Bachelor of Arts	FH	University of Applied Science			ZVS	Central Office for University Admissions
BA–2 HF	Bachelor with two main subjects, also possible as a teaching degree for grammar schools and comprehensive schools	FOR	Research Units (DFG funding programme)	MEd, G	Master of Education for teaching at primary school		
BA KJ (G)	Teaching degree for primary school	FU	Freie Universität Berlin	MEd,			
BA KJ (HRG)	Teaching degree for certain secondary schools (elementary school, secondary modern school, comprehensive school)	GB	Gigabyte	GyGe	Master of Education for teaching at grammar schools and comprehensive schools		
BLB	Department of Buildings and Real Estate Services of the State of North Rhine-Westphalia	Gesis	Leibniz Institute for the Social Sciences	MEd,			
BMBF	Federal Ministry of Education and Research	HPC	High Performance Computing	HRGe	Master of Education for teaching at elementary schools, secondary modern schools, comprehensive schools		
BMU	Federal Ministry of the Environment, Nature Conservation and Nuclear Safety	HU	Humboldt University Berlin	MIWF	Ministry of Innovation, Science and Research of the State of North Rhine-Westphalia		
BSc	Bachelor of Science	IMPP	Institute for the Coordination and Organization of Medical and Pharmaceutical Examinations	MSc	Master of Science		
CERT	Computer Emergency Response Team	IT.NRW	Landesamt für Datenverarbeitung und Statistik (State IT and Statistics Office for North Rhine-Westphalia)	NC	Numerus clausus (Restrictions on admissions)		
CEWS	Center of Excellence Women and Science	KIT	Karlsruhe Institute for Technology	NOC	Network Operating Centre		
CHE	Centre for Higher Education Development	LA	Teaching degree	NRW	Federal State of North Rhine-Westphalia		
DEP	Faculty/Department	LA BK	Teaching degree for vocational school (course of study being phased out)	PL	Publication		
Dept. 3	University administration, Dept. 3: Personnel Department/Human Resources	LA GHR,		RTG	Research Training Group		
Dept. 4	University administration, Dept. 4: Facility Management, Occupational Safety and Environmental Protection	G	Teaching degree for primary school (course of study being phased out)	SPP	Priority Programmes (DFG funding programme)		
Dept. 5	University administration, Dept. 5: Finance and Controlling	LA GHR,		TB	Terabyte		
DFG	German Research Foundation	HRGe	Teaching degree for elementary school, secondary modern school, comprehensive school (course of study being phased out)	TC	Telecommunications		
DFN	German National Research and Education Network	LA Gym/		TFlop	Teraflop		
DSH	German Sports University Cologne	Ges	Teaching degree for grammar schools and comprehensive schools (course of study being phased out)	TH	Technical University		
ERC	European Research Council	LGG	Gender Equality Act (North Rhine-Westphalia)	TRR	Collaborative Research Centre/ Transregio (DFG funding programme)		
EU	European Union	m	Million	TSM	Tivoli Storage Manager		
		M.A.	Magister Artium	TU	Technical University		
		MA	Master of Arts	U	University		
		MEd,		UKM	University Hospital Münster		
		BK/2F	Master of Education for teaching at vocational school (general education)	ULB	University and Regional Library		
				WLAN	Wireless Local Area Network (WiFi)		
				WS	Winter semester		
				WWU	Westfälische Wilhelms-Universität Münster		

› Definitions

The definitions given below refer to the data contained in this Statistical Yearbook. Their purpose is to make the Yearbook easier to understand. They make no claim to be universally applicable.

Academic success

To measure academic success, the number of final examinations passed in a certain year at a point in time (t) are correlated with the number of new students in this course at the point in time (t – prescribed length of study).

Academic year

Winter semester and the following summer semester (e.g. academic year 2009 = winter semester 2008/09 + summer semester 2009).

Affiliated institutes

Affiliated institutes are academic institutes which are legally and economically independent and which work closely together with a higher education institution in a special field. The precondition for being granted the right to bear the title of an institute at a university is that the institute meets university standards in its work.

Budget year

Corresponds to the calendar year (January 1 to December 31).

Capacity utilization

Proceeding from the number of students within the regular duration of study, the entire amount of teaching taken in each department – i.e. by students taking courses (services) assigned, or not, to that department – is calculated (measured in hours per week per semester) and expressed in relation to the teaching available. The calculation is made using the relevant standard curriculum percentage values (q.v.). The process is carried out for all subjects/departments at the University, as well as for the University in total (excluding medicine).

Cluster of Excellence

(DFG funding programme)

The aim of the Clusters of Excellence is to establish at German universities research and training institutes which are internationally visible and competitive, at the same time making possible the networks and cooperation which are imperative in the academic world. The Clusters of Excellence should be important components in a university's strategic and thematic planning, sharpening its profile and requiring priorities to be set. In addition, they should create excellent training and career conditions for junior academics.

Collaborative Research Centre

(DFG funding programme)

Collaborative Research Centres are funded by the German Research Foundation as a means of creating focuses at universities through the temporary setting up of centres of excellence. The aims of the Collaborative Research Centres are in particular the promotion of interdisciplinary cooperation and of junior academics. As a rule they are funded for twelve years. An appraisal is undertaken after every three or four years of funding.

Course of study

This is determined by the combination of subject studied and desired degree examination and is regulated by examination and study regulations. A course of study can require studying several subjects. A course of study can also be one leading to a PhD.

Cross-registered students

Students who register to study at Münster University in addition to their studies at another university. Evidence of eligibility for university admission must be provided.

Current basic funding

The current basic funding for teaching and research is a part of the university's expenditure which the university funding body provides, out of its own resources, for universities' current purposes. It is calculated by subtracting administrative revenues and incoming third-party funding from the universities' expenditure for current purposes (e.g. personnel expenditure, maintaining properties and buildings, non-personnel administrative expenditure). The current basic funding does not include any expenditure for investment.

Final examinations

In counting final examinations, passes in all subjects studied are taken into account when courses comprise several subjects.

First-time enrolments

Students in their first semester who have enrolled at a university for the first time.

Foreign students/graduates

Students or graduates with foreign nationality.

Freshman, freshman

Students who have enrolled at Münster University for the first semester in their subject.

German U15

The German U15 is an affiliation of 15 major universities, strong on research and leaders in medicine, which are jointly committed to improving conditions for academic work, research and teaching.

Graduates

Students who have passed in a course of study through taking the appropriate (final) examinations. Examinations passed in the main subject are counted (headcount).

Graduate School

A graduate school offers PhD courses with intensive supervision and an international orientation. These courses facilitate academic qualifications closely linked to focuses of research.

Guest students

Students who attend individual courses or avail themselves of further education options without wanting to take a final examination. No admissions qualification is necessary.

Main useable area

The main useable area is defined as the sum of the areas typical for the defined purpose and use of a building. It is defined in DIN 277 as part of the net floor space of a building. The main useable area and the ancillary useable area together form the total useable area.

New enrolments

Sum of first-time enrolments and students transferring from another university.

Prescribed duration of study

Comprises the prescribed length of study plus the examination period.

Prescribed length of study

The prescribed length of study is the period of time in which the credits required for registering for final examinations can be gained (in line with the study regulations).

Priority programme (DFG funding programme)

The aim of priority programmes is to give tangible impulses for further developments in research through coordinated funding at various locations for important new topics. The focus is on a new quality of topics, cooperation or methodology ("emerging fields"), added value through cross-disciplinary collaboration (interdisciplinarity) and building up networks. As a rule, a priority programme is funded for six years.

Regular students

People duly enrolled for a course of study. Does not include students currently on leave, cross-registered students, guest students and foreign students attending German language programmes.

**Research groups
(DFG funding programme)**

The research group is a medium-term association of several academics working together on a special research project which, in terms of its thematic and financial scope and its duration, goes beyond the funding possibilities offered by the German Research Foundation's Individual Grants Programme or Priority Programme. The aim of research groups is to help provide the necessary staffing and material resources for a medium-term period – mostly six years – of close cooperation. Research groups often contribute to the establishment of new fields of research.

**Research training group
(DFG funding programme)**

Research training groups are temporary arrangements at universities aimed at supporting junior graduate academics. In research training groups PhD students have the opportunity to carry out their work as part of a coordinated research programme supported by several university teachers. They are integrated into the research work being done by the institutes involved. There is a study programme designed to complement and extend the training group members' individual specializations and structure their cooperation. As a rule, the research and study programme is of an interdisciplinary nature.

Restrictions on admissions

For courses of study in which demand for places regularly exceeds the number of places available, the Ministry of Education can regulate access to such courses at the request of the university. Those wishing to study must then apply through the Foundation for University Admissions (formerly ZVS, Central Admissions Agency) (central selection procedure) or to the university direct (local selection procedure).

Special funding

Special funding is approved and provided by the state of North Rhine-Westphalia for certain defined purposes. As a rule, this funding is used to carry out projects, hire additional staff or buy equipment.

Staff

The university staff includes academic, non-academic and miscellaneous academic staff. The academic staff consists of professors, research staff, artistic staff and teachers for special tasks. The non-academic staff comprises the people working in the central administration, in the administration of the various academic departments, and in the administrative and technical areas of the institutes, chairs and Central Institutions, as well as apprentices. The miscellaneous academic staff includes people who work at the university without having their primary employment there (part-time teaching staff, auxiliary staff).

Standard curriculum value

The so-called standard curriculum value (Curricularnormwert) is a term from legislation relating to capacities offered by universities (Kapazitätsrecht) and is designed to express the differing amounts of teaching provided to students in their courses of study. The higher the proportion of teaching which is held in larger groups (e.g. lectures), the lower the Curricularnormwert, and vice-versa. The Curricularnormwert is an important parameter for determining the teaching capacities for each subject. The changeover to the new BA/MA courses requires a re-evaluation of the system used so far.

Students

In the student statistics a distinction is made between people (headcounts) and total subject courses being studied by all students (statistics relating to courses of study). For the headcount, it is always the registrations for the 1st subject which are determined. In the statistics relating to courses of study all main and secondary subjects are taken into account.

Students transferring from another university

Students who have enrolled at Münster University for the first time, or once again, to begin studying a subject or to study it in a higher semester, and who were previously enrolled at another university.

Subject semester

Semester in which students are enrolled for a certain course. This can include semesters credited from another course or subject. Holiday semesters are not included.

Subject study duration

Number of semesters studied in the subject in which the final examination is taken. Semesters from other courses of study which are recognized for the examination taken are included in the details given.

Third-party funding

Funds for research and development projects carried out by members of the University as part of their work and financed not with money from the University's budget but from funding provided by third parties. A distinction is made between expenditure from subsidies from the German Research Foundation for Collaborative Research Centres – and expenditure from third-party funding.

Third-party funding personnel

Third-party funding personnel can only be hired for a limited period, i.e. the maximum period being for the approved duration of the project in question. The decisive factor regarding employment criteria is the content of the funding notification from the source of the funding or the funding agreement signed. Contracts covering part-time employment have been converted to full-time jobs, i.e. full-time employee equivalents.

Transregio (DFG funding programme)

Since July 1999 the German Research Foundation has been funding the new Transregio collaborative research centres as an alternative to the collaborative research centres possible until then. Transregios are characterized by having several locations (often two or three). There is a free choice of cooperation partners at and between the locations. The contributions made by the individual cooperation partners must be essential, complementary and synergetic for the aim of the joint research.

University semesters

Total number of semesters completed at universities in Germany (including any changes of subject or university).

Winter semester

Period from October 1 of one year to March 31 of the next.



WESTFÄLISCHE
WILHELMS-UNIVERSITÄT
MÜNSTER

Publisher:

Rector of the Westfälische
Wilhelms-Universität Münster
Schlossplatz 2
48149 Münster

Provision of content:

Planning, Development & Controlling Dept.

Editorial work:

Britta Pohlmann, M.A.
Christian Tusch, M.A. (responsible)
Steffen Eisner, M.A

Design:

goldmarie design

Translation:

Ken Ashton

Printed by:

Druckerei Buschmann GmbH & Co. KG

Print run:

500

Münster, 2013